

Little House on the Prairie® Prairie Flowers

BY KATHY HALL



Crosses and Losses Quilt
designed by: **Lucy A. Fazely**
Quilt Size: **48" x 60"**
andoverfabrics.com



LITTLE HOUSE ON THE PRAIRIE® and associated character names and trademarks are owned and licensed by Friendly Family Productions, LLC. All rights reserved. ©2015 Friendly Family Productions, LLC

andover

•
•
• **makower uk**
• *The Henley Studio*
•

Free Pattern Download Available

1384 Broadway New York, NY 10018
Tel. (800) 223-5678 • andoverfabrics.com

Crosses and Losses Quilt



Introducing Andover Fabrics new collection:

Little House on the Prairie® – PRAIRIE FLOWERS by Kathy Hall

Quilt designed by Lucy A. Fazely

Quilt finishes 48" x 60"

20 Blocks: 12" x 12"

So many settings are possible with this traditional pieced block. In this version, the blocks are set in the same orientation, which results in strong diagonal lines moving across the quilt. Place the darker prints in the larger triangles to enhance the image.

Cutting Directions

Note: Read assembly directions before cutting patches. All measurements are cut sizes and include 1/4" seam allowances. A fat 1/8 is a 9" x 20"-22" cut of fabric. A fat 1/4 is an 18" x 20"-22" cut. WOF designates the width of fabric from selvedge to selvedge (approximately 42" wide).

Fabric A

Cut (100) squares 3 7/8" x 3 7/8", cut in half diagonally to make 200 half-square triangles (read Step 1 first)

Cut (80) squares 3 1/2" x 3 1/2"

Fabric B

Cut (6) strips 2 1/2" x WOF for binding

8 Darks

From each:
Cut (3) squares 6 7/8" x 6 7/8", cut in half diagonally to make 6 half-square triangles (only 5 needed of each—40 total)

12 Med.

From each:
Cut (5) squares 3 7/8" x 3 7/8", cut in half diagonally to make 10 half-square triangles (120 total—read Step 1 first)

Backing

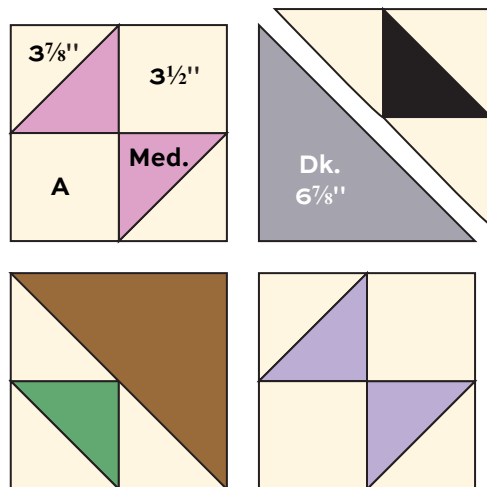
Cut (2) panels 33" x 54", pieced to fit quilt top with overlap on all sides

Fabric Requirements

		Yardage	Fabric	
Fabric A	blocks	2 1/4 yards	7924-L	
Fabric B	binding	1/2 yard	7949-K	
8 Dk.	blocks	fat 1/4 yard each		
	7947-B	7947-K	7947-N	7949-B
	7951-B	7951-R	7952-B	7952-T
12 Med.	blocks	fat 1/8 yard each		
	7948-B	7948-R	7948-Y	7949-E
	7949-G	7949-N	7949-P	7949-T
	7949-Y	7950-C	7951-G	7952-K
*Backing		3 yards	7950-Y	

Making the Quilt

1. Divide the 12 Medium prints into 2 stacks: Choose 8 lighter prints for stack #1 and the 4 darkest prints for stack #2. If you prefer, make half-square triangles that finish 3" square, using your favorite method. Referring to the block diagram, join 2 Fabric A triangles and 2 like triangles from pile #1 to make 2 half-square triangle squares. Sew the HST with 2 Fabric A 3 1/2" squares to make a four-patch unit. Repeat to make a second four-patch unit using a different print from stack #1.



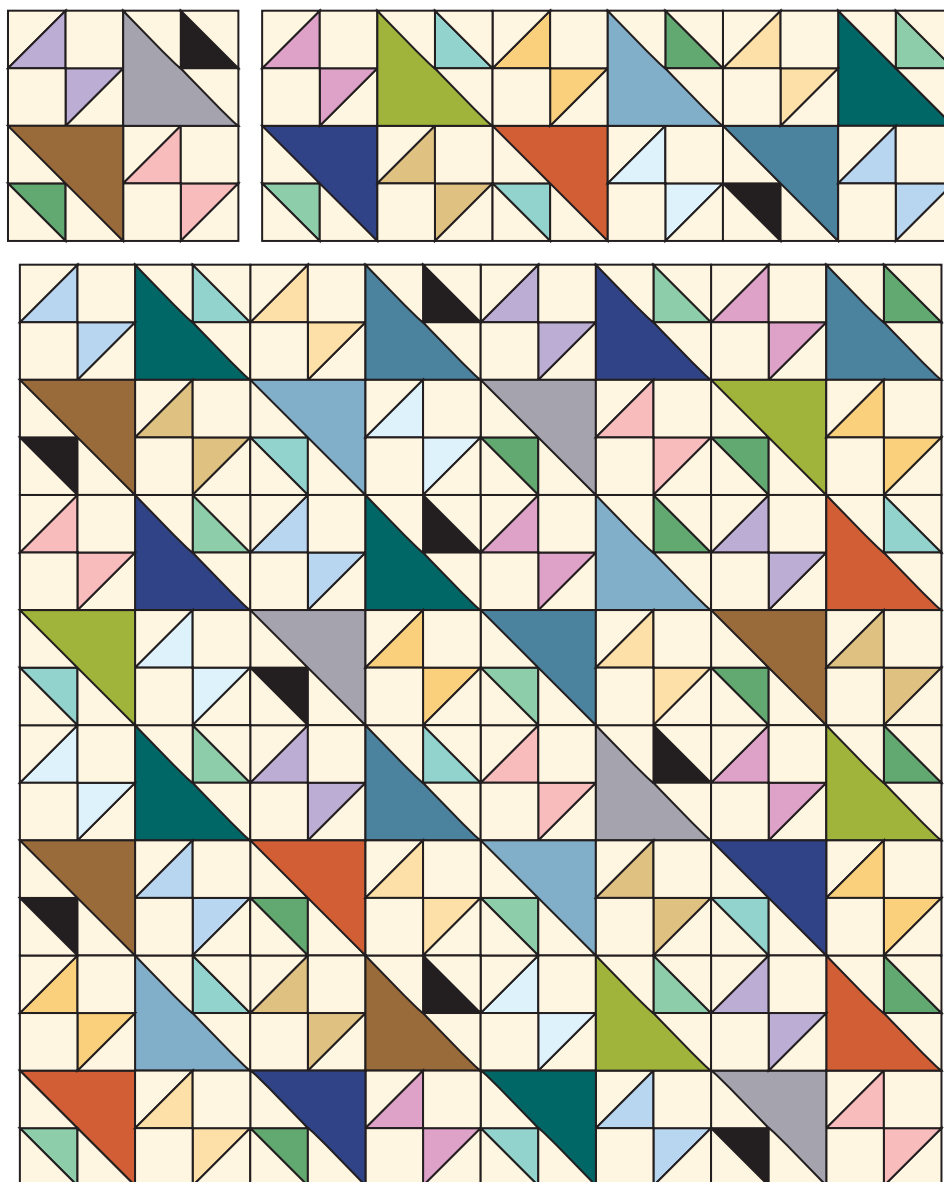
Block – Make 20

Crosses and Losses Quilt

2. Sew a Fabric A triangle and a triangle from stack #2 to make an HST. Make a second HST using a different print from stack #2. Sew 2 Fabric A $3\frac{7}{8}$ " triangles to the sides of the HST as shown. Press seam allowances away from the medium triangle. Sew a dark $6\frac{7}{8}$ " triangle to each HST unit. Join the 4 block units to make a block. Make 20 blocks, each with a different combination of prints.
3. Hint: Before you join the blocks, you may want to experiment with other settings. Since these blocks have a strong diagonal imagery, many different settings are possible. To make the quilt shown, refer to the Quilt Diagram to arrange the blocks. Join 4 blocks to make a horizontal row. Make 5 rows. Join the rows.

Finishing the Quilt

4. Layer the quilt with batting and backing and baste. Quilt in the ditch around block patches. Quilt a motif inside the larger triangles as you wish. Bind to finish the quilt.



Quilt Diagram

Little House on the Prairie Prairie Flowers

BY KATHY HALL



7950-C*



7947-B*



7948-B*



7951-B*



7952-B*



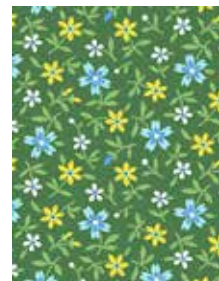
7950-E



7947-K*



7948-R*



7951-G*



7952-K*



7950-Y*



7947-N*



7948-Y*



7951-R*



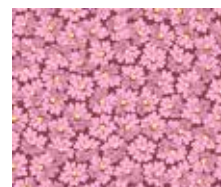
7952-T*



7924-L*



7949-B*



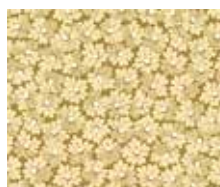
7949-E*



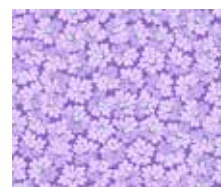
7949-G*



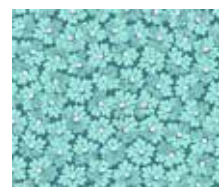
7949-K*



7949-N*



7949-P*



7949-T*



7949-Y*

*Indicates fabrics used in quilt pattern. Fabrics shown are 50% of actual size.