

FRINGE BLOSSOMS

Quilt design by Linda Fitch featuring fabrics from the "Bohemia" and "Modern Scrapbook" collections by Fringe Studio for Hoffman California Fabrics



Quilt Size 67" x 54"

Free pattern available from
www.hoffmanfabrics.com

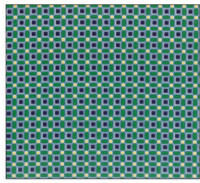
HOFFMAN FABRICS
CALIFORNIA-INTERNATIONAL

FRINGE

Hoffman California Fabrics is pleased to present the exceedingly beautiful artwork of Fringe Studio on premium cotton fabric for quilting and sewing. Give your creative mind freedom to flourish with *Bohemia* and *Modern Scrapbook* by Fringe Studio, featuring a mashup of vintage flora and fauna and bold geometric patterns.



L3355 557-Azalea



L3359 31-Emerald



L3358 68-Indigo



L3363 68-Indigo



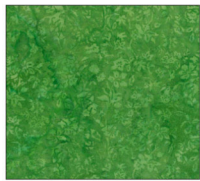
L3361 222-Hydrangea



BF3 178-Leaf



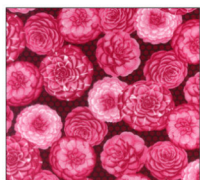
L3364 557-Azalea



BF3 31-Emerald



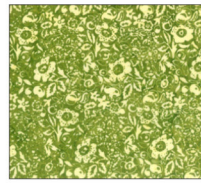
BF1 222-Hydrangea



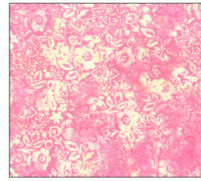
L3356 557-Azalea



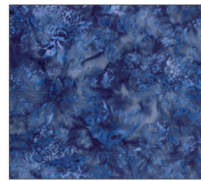
L3357 178-Leaf



BF4 115-Grass



BF4 557-Azalea



BF1 120-Hyacinth



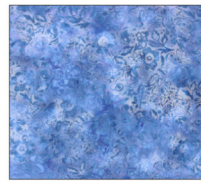
L3362 222-Hydrangea



BF2 497-Guava



L3360 222-Hydrangea



BF4 139-Periwinkle



BF4 68-Indigo



BF2 222-Hydrangea

Fringe Blossom Hoffman Bali Pops®

2-1/2" wide strips

Screenprint and batik fabrics
combined in one Bali Pops!
There are two strips of each
fabric shown left.



FRINGE BLOSSOM'S

Quilt Design by Linda Fitch
featuring fabrics from Fringe Studio

54 x 67"

Made from 1 **Hoffman Fabrics Fringe Bali Pop...BP-448-Blossom**

PLUS: for blocks (sashing)

$\frac{3}{4}$ th yard of Hoffman Style # WH-2 White (58" wide) or 1 yard, if using 44" solid white

ALSO: for backing -- 3 1/2 yards white fabric OR fabric color/style of your choice

Being that there are 2 each of 20 different fabrics, in the Fringe Bali Pop, match like fabrics together.

Cutting

- Fabric 1 sub-cut 2 lengths 15 1/2 " and 4 lengths at 11 1/4 "
- Fabric 2 sub-cut 4 lengths at 15 1/2 "
- Fabric 3 sub-cut 2 lengths at 15 1/2 " and 4 lengths at 11 1/4 "
- Fabric 4 sub-cut 2 lengths at 15 1/2 " and 4 lengths at 11 1/4 "
- Fabric 5 sub-cut 3 lengths at 15 1/2 " and 2 lengths at 11 1/4 "
- Fabric 6 sub-cut 2 lengths at 15 1/2 " and 2 lengths at 11 1/4 "
- Fabric 7 sub-cut 4 lengths at 15 1/2 "
- Fabric 8 sub-cut 4 lengths at 15 1/2 " and 2 lengths at 11 1/4 "
- Fabric 9 sub-cut 2 lengths at 15 1/2 " and 2 lengths at 11 1/4 "
- Fabric 10 sub-cut 2 lengths at 15 1/2 " and 4 lengths at 11 1/4 "
- Fabric 11 sub-cut 2 lengths at 15 1/2 " and 4 lengths at 11 1/4 "
- Fabric 12 sub-cut 2 lengths at 24" and 2 lengths at 15 1/2 "

Fabric 13 sub-cut 2 lengths at 15 ½ " and 4 lengths at 11 ¼ "

Fabric 14 sub-cut 6 lengths at 11 ¼ "

Fabric 15 sub-cut 4 lengths at 15 ½ " and 2 lengths at 11 ¼ "

Fabric 16 sub-cut 4 lengths at 15 ½ "

Fabric 17 sub-cut 2 lengths at 24" and 2 lengths at 15 ½ "

Fabric 18 sub-cut 2 lengths at 15 ½ " and 4 lengths at 11 ¼ "

Fabric 19 sub-cut 4 lengths at 15 ½ " and 2 lengths at 11 ¼ "

Fabric 20 sub-cut 2 lengths at 15 ½ " and 2 lengths at 11 ¼ "

From solid white fabric cut 72- 2 ½ " squares.

For outer borders, also from white fabric, cut 7- 2 ½" strips (if using fabric that is 44" wide). *If using Hoffman Fabric style # WH-2 (58" wide) cut 5 strips at 2 ½".*

For binding, from white fabric, cut 6 strips at 2 ¼" (if using fabric that is 44" wide). *If using Hoffman Fabrics style # WH-2 (58" wide) cut 5 strips at 2 ¼".*

Construction

Use photo for suggested fabric placement.

Start with top row, sew single rows of strips together, interspersing white squares in between.

Throughout the project, stay mindful of the prints that have a definite direction, to avoid any print from being sewn in upside down.

Continue with row 2. Sew rows 1 and 2 together, along long edges.

Match any intersecting seams.

Continue to piece single rows 3 and 4 and sew those together along long edges. Join rows 3 and 4 to rows 1 and 2.

Proceed with rows 5 and 6. After they have been joined, attach to bottom of previous rows.

Continue as above working in pairs of two rows.

After row 10, add single row of 2- 24" sub-cuts and 1- 2 1/2" square. (row 11)

Continue with rows 12-16. Attach to bottom of row 10. Put aside this top portion for now.

Start the second (bottom) section...when you get to row 5, of second section, sew 2 strips of 24" with a white square between the 2 strips.

Proceed piecing the individual rows and then join rows together in pairs of two, ending with 15 rows for this bottom section.

Join bottom half to top.

It may be necessary to trim the left and right outer edges.

Fold quilt top in half crosswise. Measure down the middle and double this measurement. This is the length to cut your left and right outer borders. *Approximately 64"*.

Once they are attached, fold the quilt in half lengthwise. Measure and double this measurement...this is the width of your top and bottom borders. *Approximately 53"*. Sew in place.

Quilt, bind and enjoy!