

Poseys for Peyton

Designed by Char Hopeman
Featuring the Peyton Collection by Nancy Gere
Size: 58" x 76"



Check www.windhamfabrics.com Free Project section to see if there are any pattern updates before you start your quilt project

WINDHAM FABRICS

812 Jersey Ave ~ Jersey City, NJ 07310 ~ 201.659.0444 ~ FAX: 201.659.9719
www.windhamfabrics.com email: retail@windhamfabrics.com

Poseys for Peyton

Page 2



40311-X Multi



40312-1 Cranberry



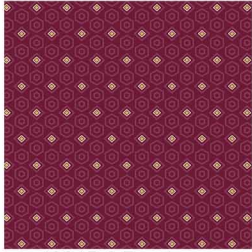
40312-2 Purple



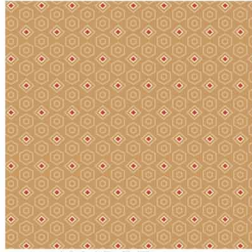
40312-3 Green



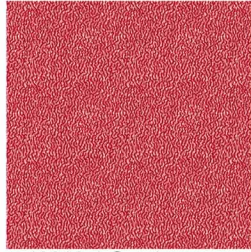
40313-3 Green



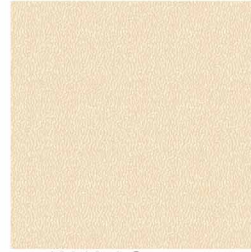
40315-2 Purple



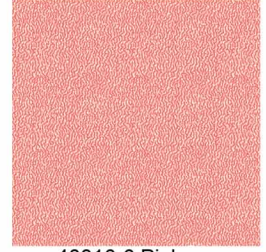
40315-5 Tan



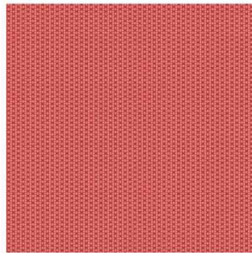
40316-1 Cranberry



40316-4 Cream



40316-6 Pink



37165-5 Red



32033-4 Gold

MATERIALS

Peyton

- 1¼ yd. sku #40311-X Multi-Red Floral(border)
- 2 yd. sku #40316-4 Cream(Background)
- 1 yd. sku #40313-3 Green small Floral(Hourglass blocks)
- ¾ yd. sku #40312-1 Red Leaf(includes binding)
- ⅛ yd. sku #40312-2 Plum Leaf
- 1 yd. sku #40312-3 Green Leaf
- ⅛ yd. sku #31765-A Red
- ⅛ yd. sku #40315-2 Purple
- ½ yd. sku #40315-5 Tan
- ⅛ yd. sku #40316-1 Cranberry
- ⅛ yd. sku #40316-6 Pink
- 3½ yd. sku #40316-4 Cream Rosebud Stripe(backing)

Mary's Blenders

- ¼ yd. sku # 32033-4 Gold(flower centers)

Batting

Poseys for Peyton

Page 3

CUTTING INSTRUCTIONS

sku #40311-X

Cut 6 - 6" w strips

sku #40316-4

Cut 3 - 10½" w strips. Cut them into 9 - 10½" squares (alternate hourglass blocks).

Cut 9 - 2¾" w strips. Cut them into 144 - 2¾" squares (pinwheels). Draw a diagonal line of the backs of all of these squares.

Sku #40313-3

Cut 3 - 10½" w strips. Cut them into 9 - 10½" squares (alternate hourglass blocks).

Sku #40312-1

Cut 9 - 2¾" w strips. Cut them into 144 - 2¾" squares (pinwheels).

Sku #40312-2

Cut 6 - 2¼" w strips (binding).

Cut 1 - 2⅜" w strip. Cut into 12 - 2⅜" squares (flowers).

Sku #40312-3

Cut 1 - 2⅜" w strip. Cut into 12 - 2⅜" squares (flowers).

Sku #31765-A

Cut 1 - 2⅜" w strip. Cut into 12 - 2⅜" squares (flowers).

Sku #40315-2

Cut 1 - 2⅜" w strip. Cut into 12 - 2⅜" squares (flowers).

Sku #40315-5

Cut 6 - 1½" w strips (inner border).

Sku #40316-1

Cut 1 - 2⅜" w strip. Cut into 12 - 2⅜" squares (flowers).

Sku #40316-6

Cut 1 - 2⅜" w strip. Cut into 12 - 2⅜" squares (flowers).

Sku #40314-4

Cut into 2 - 1¾ yd. lengths. Sew these together along the selvages using a 1" seam allowance. Trim off the selvages in the seam. Press the seam open. Back should be approx. 63" x 86".

Poseys for Peyton

Page 4

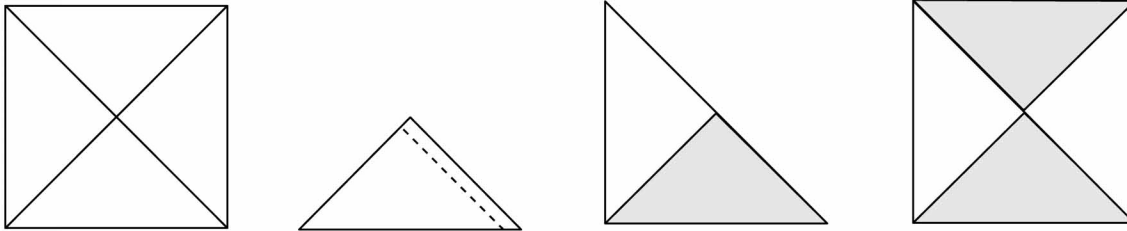
BLOCK PIECING INSTRUCTIONS

Make 17 hourglass blocks as follows.

Lay a 10½" sku #40316-4 cream background square and a sku #40313-3 green small floral print 10½" square right sides together. Cut diagonally twice into ¼ square triangles.

Sew the triangles together into pairs. Press the seams toward the green small floral print side.

Sew the pairs together into an hourglass.



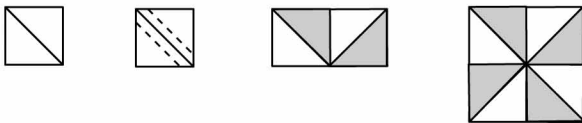
Make 72 pinwheel squares as follows.

Lay a 2¾" sku #40316-4 cream background square and a 2¾" sku #40312-3 green leaf square right sides together. Draw a diagonal line on the back of the cream square.

Sew ¼" from each side of the drawn line. Cut on the drawn line. Press the seams toward the green side.

Sew these pieced triangles into pairs. Press the seam to one side. Sew these pairs into pinwheel squares.

Press the seams all in the same direction.

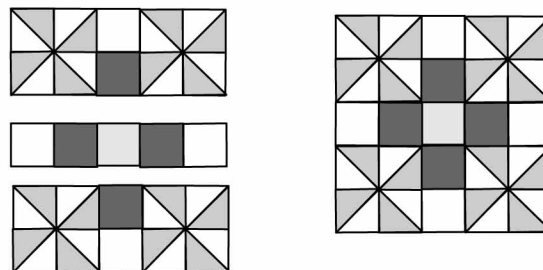


Sew the 2¾" sku #40316-4 cream background squares and the 72 - 2¾" flower squares together. Press the seams toward the dark sides. You should have 12 in each color print.



Using the pinwheels, sku #32033-4 2¾" gold flower centers and the above pieced sections assemble the flowers blocks as shown.

Press the seams toward the middle section. Make 3 blocks in each of the 6 colorways.



Poseys for Peyton

Page 5

Sew the flower blocks and the hourglass blocks into rows as follows.

ODD rows -

Sew 3 flower blocks and 2 hourglass blocks together alternately with the green side of the hourglass blocks touching the flower blocks. Press the seams toward the hourglass blocks. Make 4 of these rows.

EVEN rows -

Sew 3 hourglass blocks and 2 flower blocks together alternately with the background side of the hourglass block touching the flower blocks. Press the seams toward the hourglass blocks.

Sew the rows together starting and ending with an ODD row. Press the seams all in the same direction.

BORDERS

Sew the 6 - 1½" w sku #9 tan geometric print inner border strips together into one long strip. Measure the length of the quilt top. Cut two inner border strips this length. Sew these to the sides of the quilt top. Press the seams toward the border strips.

Measure the width of the quilt top. Cut two inner border strips this length. Sew these to the top and bottom of the quilt top. Press as before.

Sew the 6 - 6" w sku #large red floral print outer border strips together into one long strip.

Measure the length of the quilt top. Cut two border strips this length. Sew these to the sides of the quilt top. Press as before.

Measure the width of the quilt top. Cut two border strips this length. Sew these to the top and bottom of the quilt top. Press as before.

FINISHING

Layer the backing, batting and quilt top together.

Baste and quilt as desired.

Bind you quilt using the 6 - 2¼" w sku #40312-1 red leaf print binding strips.

Enjoy!

Be sure to visit www.windhamfabrics.com to see the complete collection
and to download this and other Free Projects