

Witches Celebrate


Riley Blake
DESIGNS


Witch Hazel

October Afternoon



Witches Celebrate

FINISHED QUILT SIZE 60" x 60"

Finished Block Size 15" x 15"

Measurements include $\frac{1}{4}$ " seam allowance.

Sew with right sides together unless otherwise stated.

Note: Witches Celebrate Templates need to be printed on 11" x 17" paper.

Please check our website www.rileyblakedesigns.com for any revisions before starting this project. This pattern requires a basic knowledge of quilting technique and terminology and foundation piecing. The quilt and block diagrams portrayed are virtual images. The layout and look of your project may differ when using actual fabric.

FABRIC REQUIREMENTS

1 Witch Hazel Fat Quarter Stack (FQ-3930-21)

$\frac{3}{4}$ yard (60 cm) cream stripe (C3934 Cream)

1 $\frac{1}{4}$ yards (1.15 m) gray main (C3930 Gray)

1 $\frac{1}{2}$ yards (1.4 m) off white solid (C100-02 Off White)

Binding $\frac{3}{8}$ yard (60 cm)

Backing 3 $\frac{3}{4}$ yards (3.45 m)

CUTTING REQUIREMENTS

Please read instructions first before cutting. Seam allowances vary so measure through the center of the quilt before cutting border pieces.

Cat Block

Cut 1 square 15 $\frac{1}{2}$ " x 15 $\frac{1}{2}$ " from off white solid.

Trace cat template and cut out cat from black stars. Add a $\frac{1}{4}$ " seam allowance if necessary for your favorite method of appliqué.

Pumpkin Block

Cut 1 rectangle 2 $\frac{1}{4}$ " x 4 $\frac{1}{4}$ " from gray web. Label as A1.

Cut 1 rectangle 3 $\frac{1}{2}$ " x 3 $\frac{1}{2}$ " from off white solid. Label as A2.

Cut 2 rectangles 6" x 8 $\frac{1}{4}$ " from off white solid. Label as A3 and A4.

Cut 1 rectangle 8" x 10 $\frac{1}{2}$ " from orange spell. Label as B1.

Cut 1 rectangle 3 $\frac{1}{2}$ " x 10" from gray pumpkins. Label as B2.

Cut 1 rectangle 4 $\frac{1}{4}$ " x 9" from orange stars. Label as B3.

Cut 2 rectangles 3" x 5" from off white solid. Label as B4 and B10.

Cut 1 rectangle 4" x 10" from orange stripe. Label as B5.

Cut 2 rectangles 3 $\frac{1}{4}$ " x 5 $\frac{1}{4}$ " from off white solid. Label as B6 and B11.

Cut 1 rectangle 4 $\frac{1}{4}$ " x 8 $\frac{3}{4}$ " from orange dot. Label as B7.

Cut 1 rectangle 6" x 9 $\frac{1}{2}$ " from cream pumpkins. Label as B8.

Cut 1 rectangle 4" x 9" from orange stripe. Label as B9.

Witch Block

Cut 1 square 7 $\frac{1}{2}$ " x 7 $\frac{1}{2}$ " from gray web. Label as C1.

Cut 2 squares 7 $\frac{3}{4}$ " x 10 $\frac{1}{2}$ " from off white solid. Label as C2 and C3.

Cut 1 rectangle 2 $\frac{1}{4}$ " x 16" from gray web. Label as C4.

Cut 1 square 8 $\frac{3}{4}$ " x 8 $\frac{3}{4}$ " from orange dot. Label as D1.

Cut 2 rectangles 8" x 10" from cream main. Label as D2 and D4.

Cut 2 rectangles 4 $\frac{1}{2}$ " x 10" from off white solid. Label as D3 and D5.

Leaf Block

Cut 1 square 5 $\frac{1}{2}$ " x 5 $\frac{1}{2}$ " from off white solid

Cut 1 square 5 $\frac{1}{2}$ " x 5 $\frac{1}{2}$ " from green spell

Cut 1 square 5 $\frac{1}{2}$ " x 5 $\frac{1}{2}$ " from green web

Cut 1 square 5 $\frac{1}{2}$ " x 5 $\frac{1}{2}$ " from green pumpkins

Cut 1 square 5 $\frac{1}{2}$ " x 5 $\frac{1}{2}$ " from gray web

Cut 2 squares 5 $\frac{7}{8}$ " x 5 $\frac{7}{8}$ " from off white solid. Cut each square once diagonally to create 4 large triangles.

Cut 1 square 5 $\frac{7}{8}$ " x 5 $\frac{7}{8}$ " from green stripe. Cut once diagonally to create 2 triangles.

Cut 1 square 5 $\frac{7}{8}$ " x 5 $\frac{7}{8}$ " from green dot. Cut once diagonally to create 2 triangles (1 will not be used).

Cut 1 square 5 $\frac{7}{8}$ " x 5 $\frac{7}{8}$ " from green stars. Cut once diagonally to create 2 triangles (1 will not be used).

Cut 2 squares 4 $\frac{1}{4}$ " x 4 $\frac{1}{4}$ " from off white solid

Sashing

Cut 2 strips 4 $\frac{1}{2}$ " x WOF from off white solid. Cut one strip into 2 rectangles 4 $\frac{1}{2}$ " x 15 $\frac{1}{2}$ " for sashing. Cut the remaining strip into 1 rectangle 4 $\frac{1}{2}$ " x 34 $\frac{1}{2}$ " for sashing.

Border 1

Cut 4 strips 5 $\frac{1}{2}$ " x WOF from cream stripe

Border 2

Cut 5 strips 8 $\frac{1}{2}$ " x WOF from gray main

QUILT ASSEMBLY

Refer to the quilt photo for placement of fabrics and blocks.

Cat Block

Use your favorite method of appliqué to create the Cat Block.

Pumpkin Block

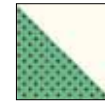
The Pumpkin Block is created using foundation piecing. Sew the Pumpkin Stem and Pumpkin Sections together to create the Pumpkin Block.

Witch Block

The Witch Block is created using foundation piecing. Sew the Witch Hat and Witch Face Sections together to create the Witch Block.

Leaf Block

Sew the assorted print triangles and the off white solid triangles together to create 4 Half Square Triangles.



Half Square Triangle

Draw a diagonal line from corner to corner on the wrong side of the off white solid 4 $\frac{1}{4}$ " squares. Place an off white solid 4 $\frac{1}{4}$ " square in the corner of the gray web 5 $\frac{1}{2}$ " square. Sew on the diagonal. Leave a $\frac{1}{4}$ " seam allowance and trim excess. Press. Repeat on the opposite corner to create the Leaf Stem.



Leaf Stem

Referring to block diagram for piece placement, sew 1 off white solid 5 $\frac{1}{2}$ " square, 4 Half Square Triangles, 3 assorted print 5 $\frac{1}{2}$ " squares, and 1 Leaf Stem together to create the Leaf Block.



Leaf Block

Quilt Center Assembly

Refer to quilt photo for block placement. Sew the Cat Block and the Pumpkin Block to each side of an off white solid 4 $\frac{1}{2}$ x 15 $\frac{1}{2}$ " sashing rectangle to create Row A. Sew the Witch Block and the Leaf Block to each side of the remaining off white solid 4 $\frac{1}{2}$ x 15 $\frac{1}{2}$ " sashing rectangle to create Row B. Sew Row A, the 4 $\frac{1}{2}$ " x 34 $\frac{1}{2}$ " sashing rectangle, and Row B together to create the quilt center.

Borders

Seam allowances vary so measure through the center of the quilt before cutting border pieces. Sew border strips together end to end if necessary to get the length needed. Sew side borders first.

Witches Celebrate

Border 1

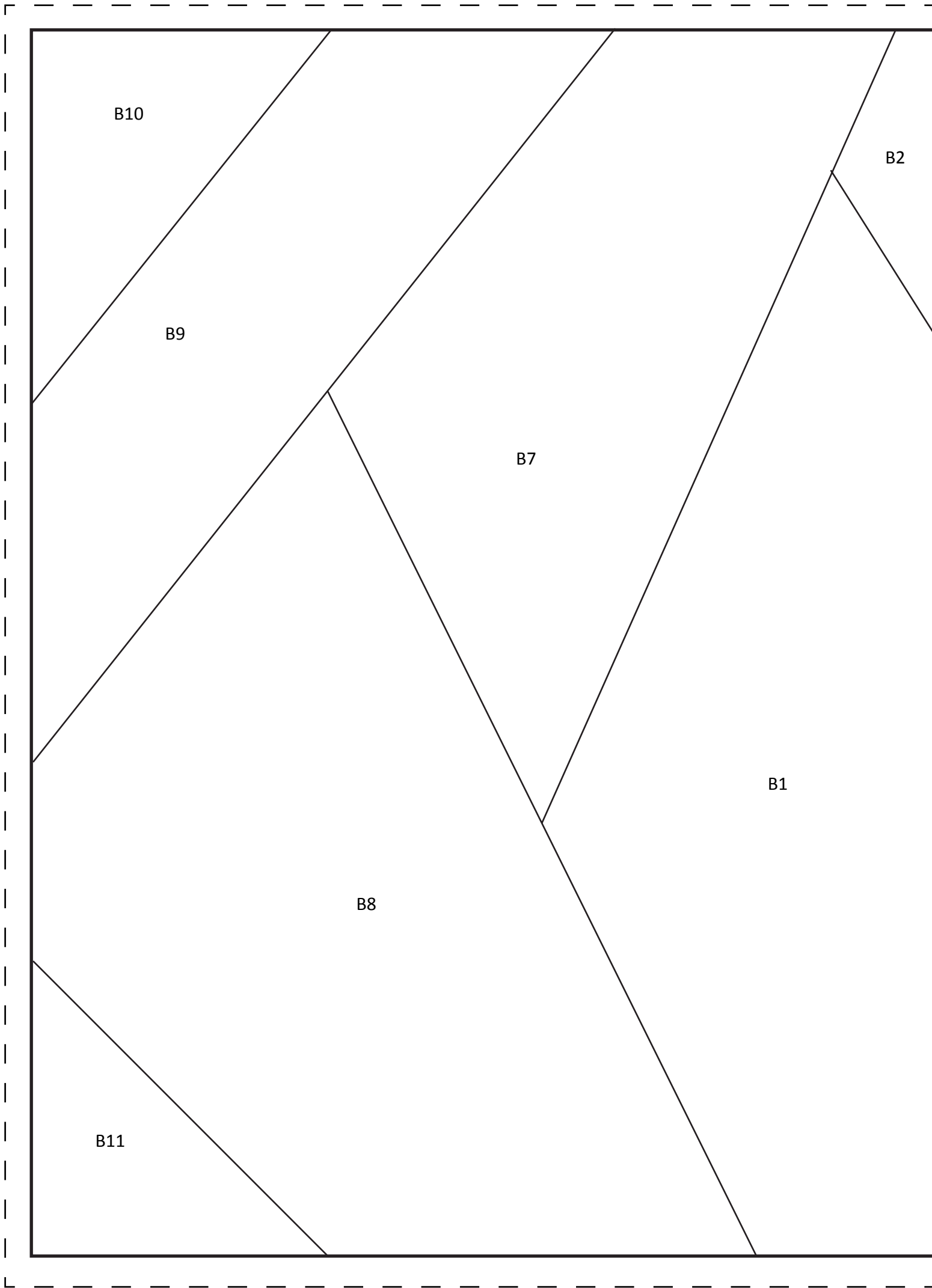
Side borders should be $34\frac{1}{2}$ ". Top and bottom borders should be $44\frac{1}{2}$ ".

Border 2

Side borders should be $44\frac{1}{2}$ ". Top and bottom borders should be $60\frac{1}{2}$ ".

Finish quilt by layering the quilt top, batting, and back. Bind with your favorite Riley Blake fabric from the Witch Hazel Collection. Have fun with your colors and enjoy the journey of making your quilt.

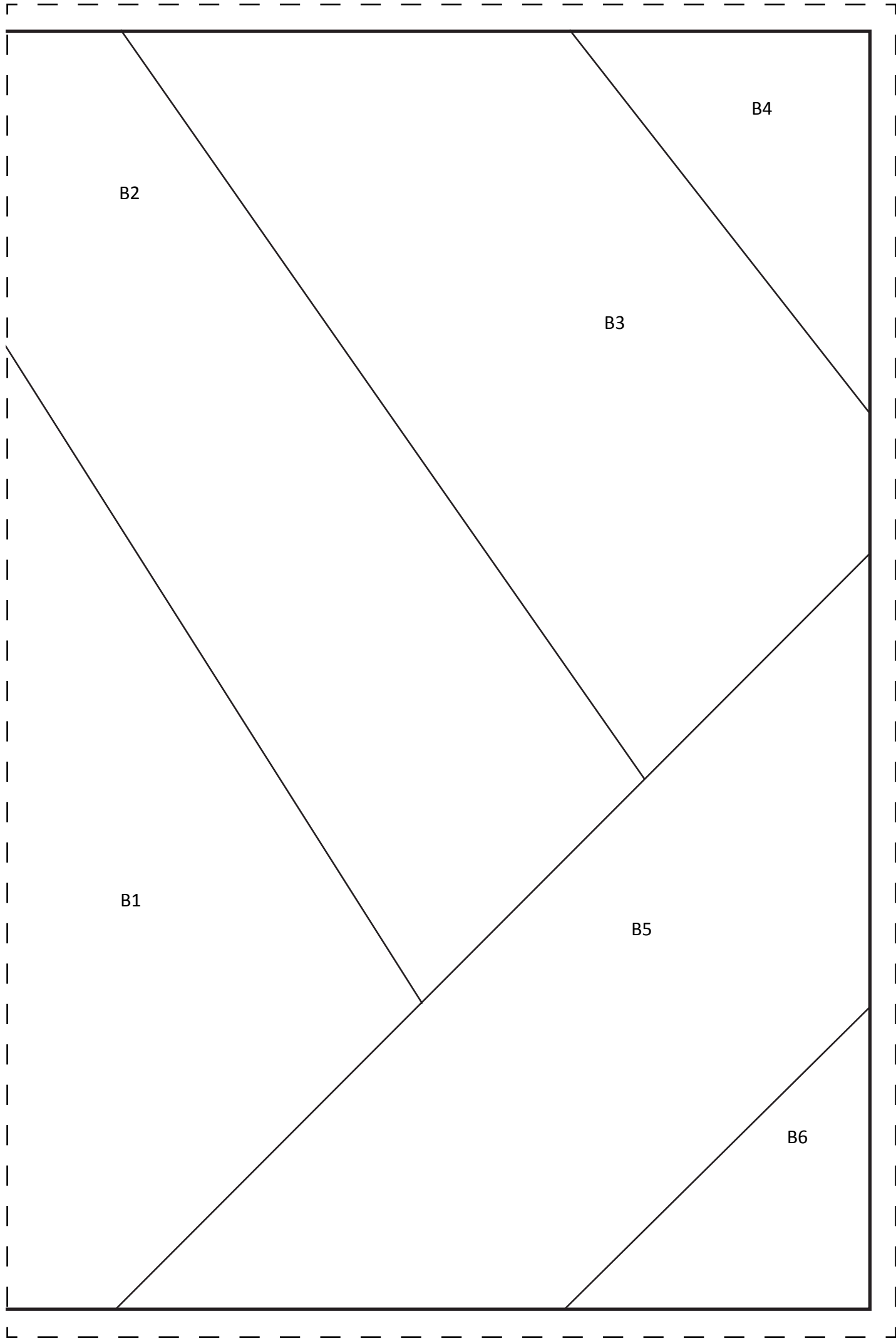
Witches Celebrate



Pumpkin

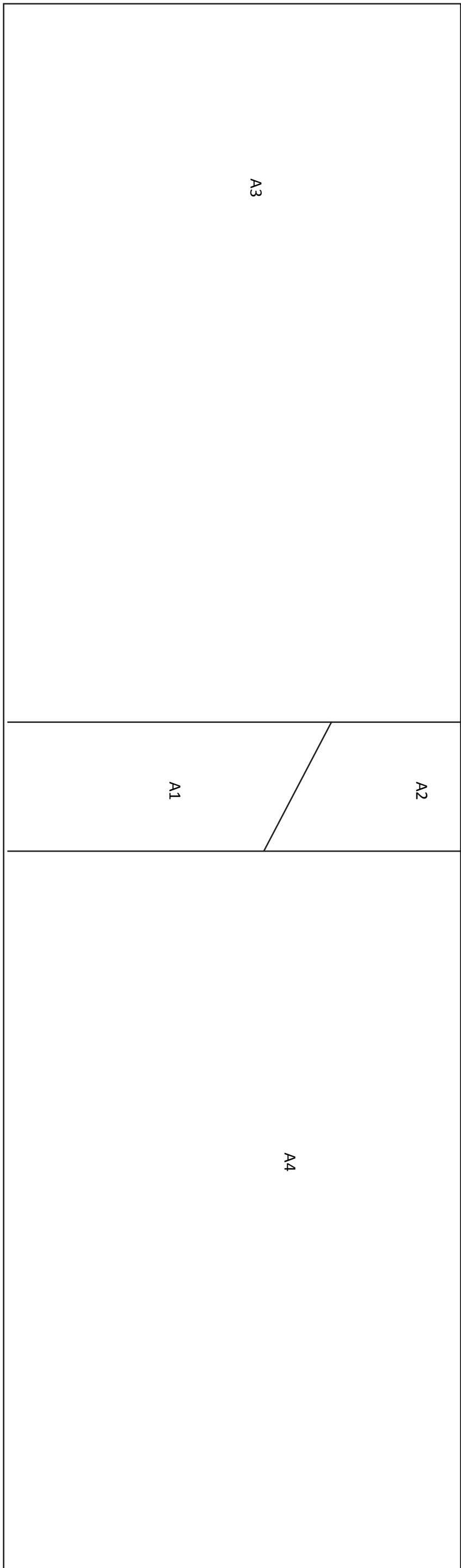
Note: Join at center dashed lines

Witches Celebrate

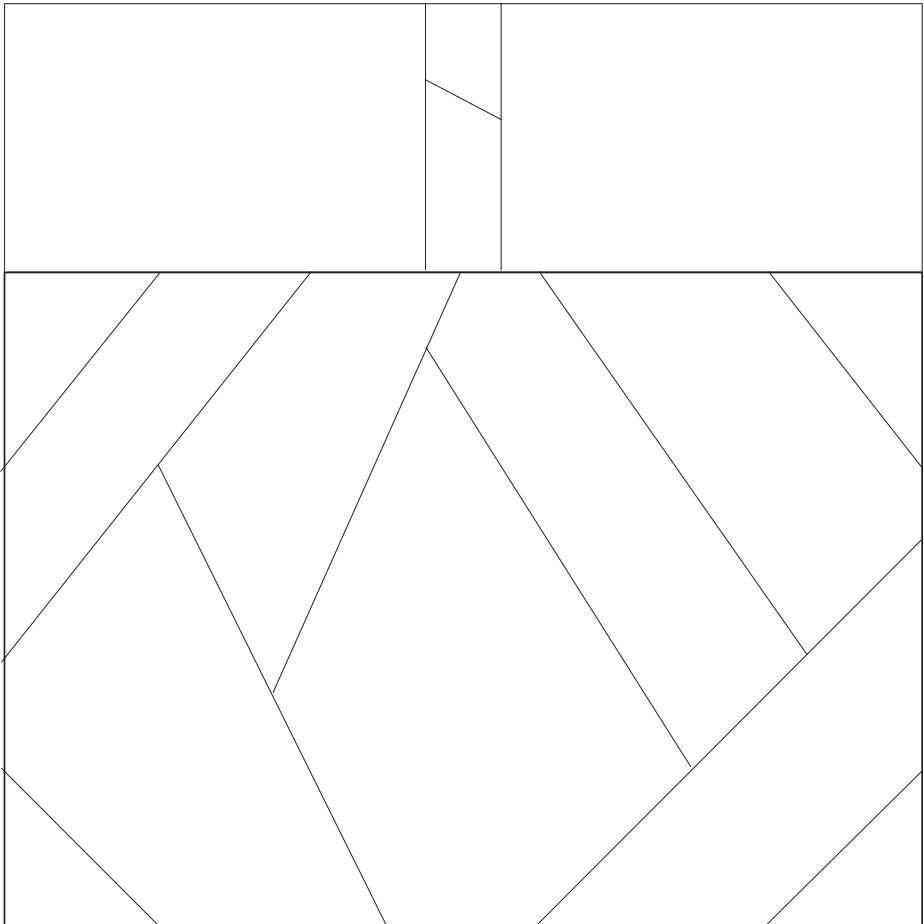


Pumpkin

Note: Join at center dashed lines



Pumpkin Stem

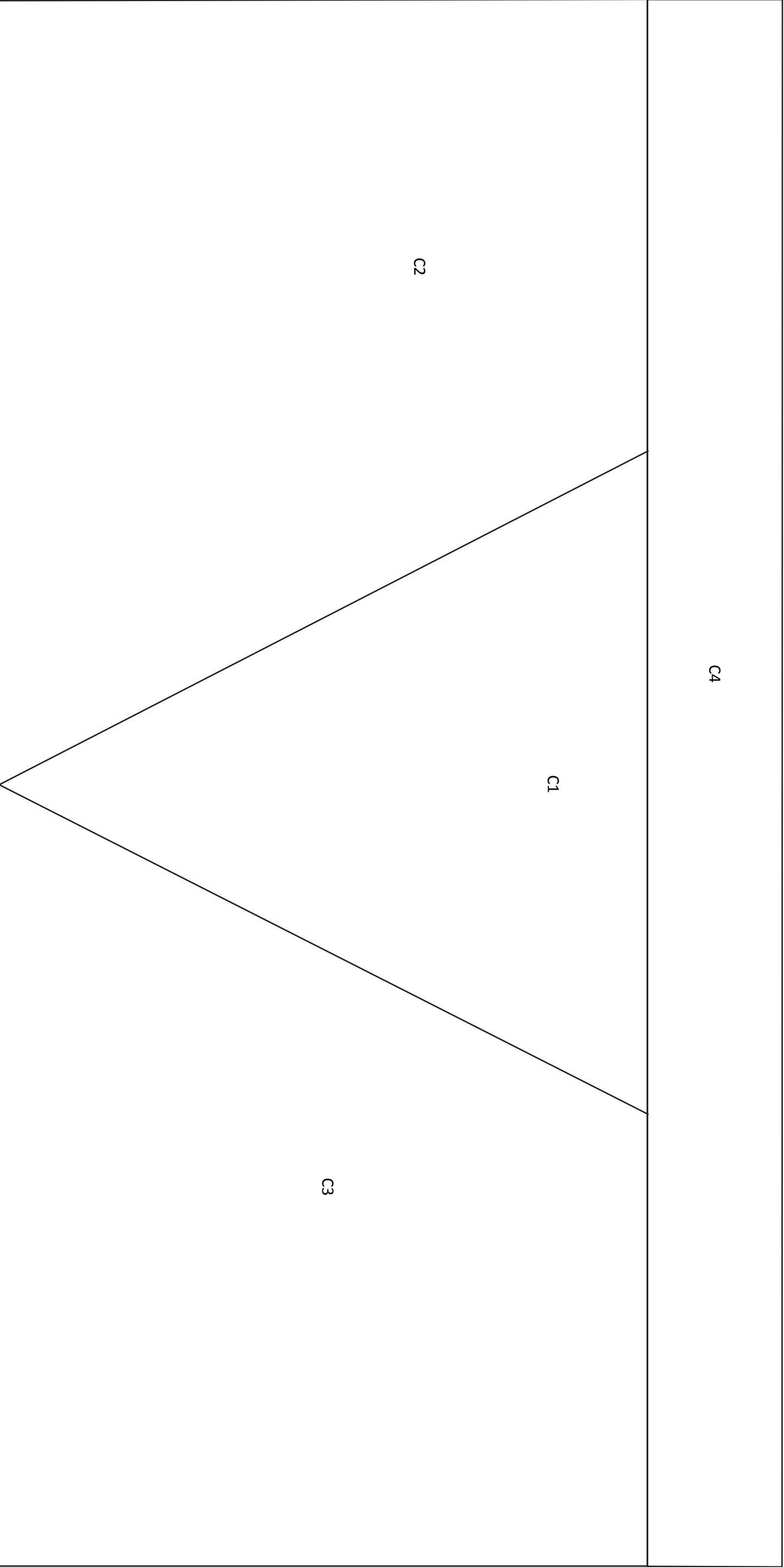


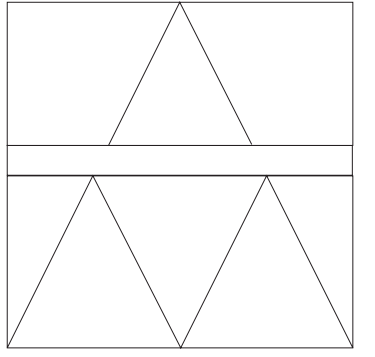
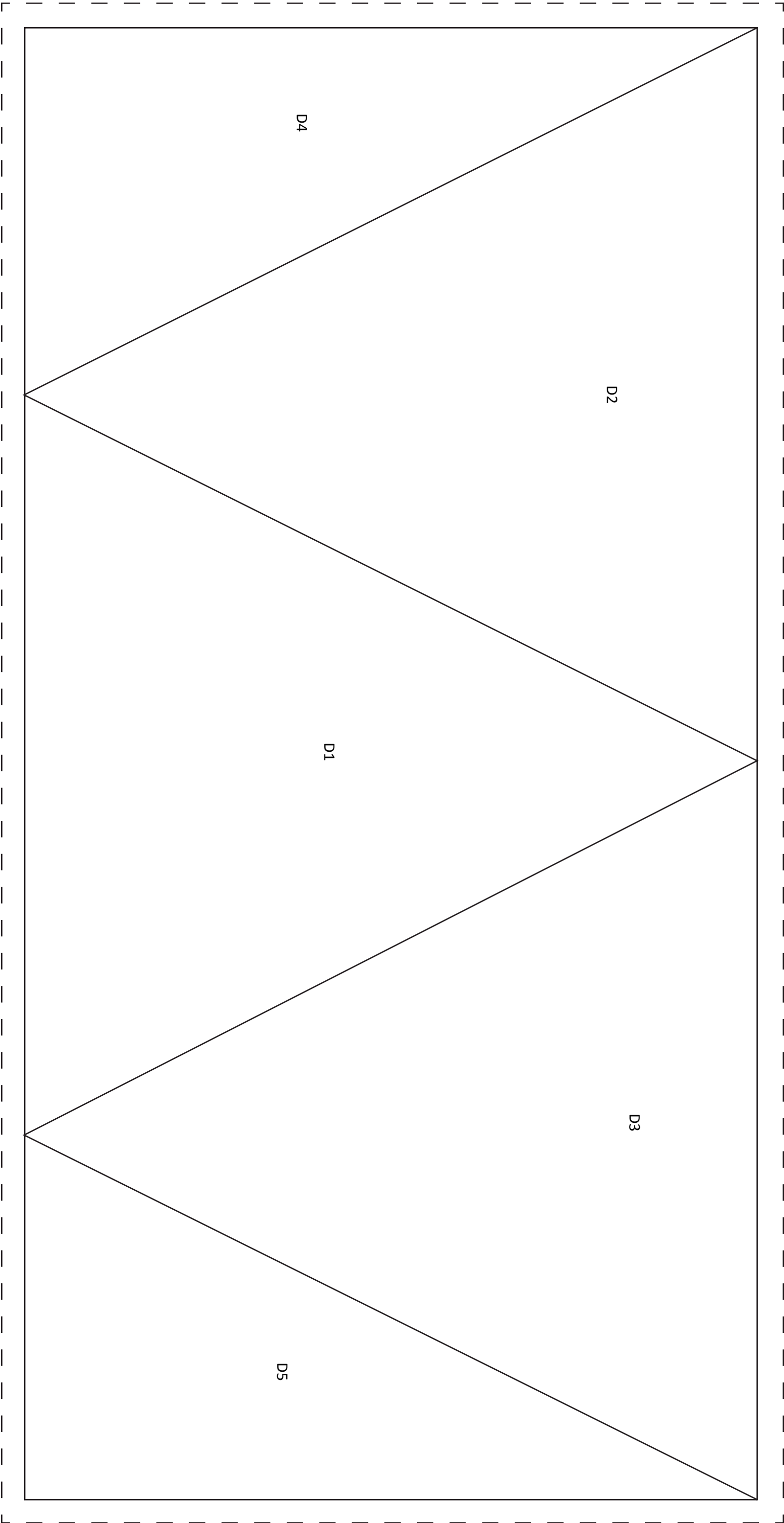
Pumpkin Diagram

Measure
1 Inch

Measure
1 Inch

Witch Hat

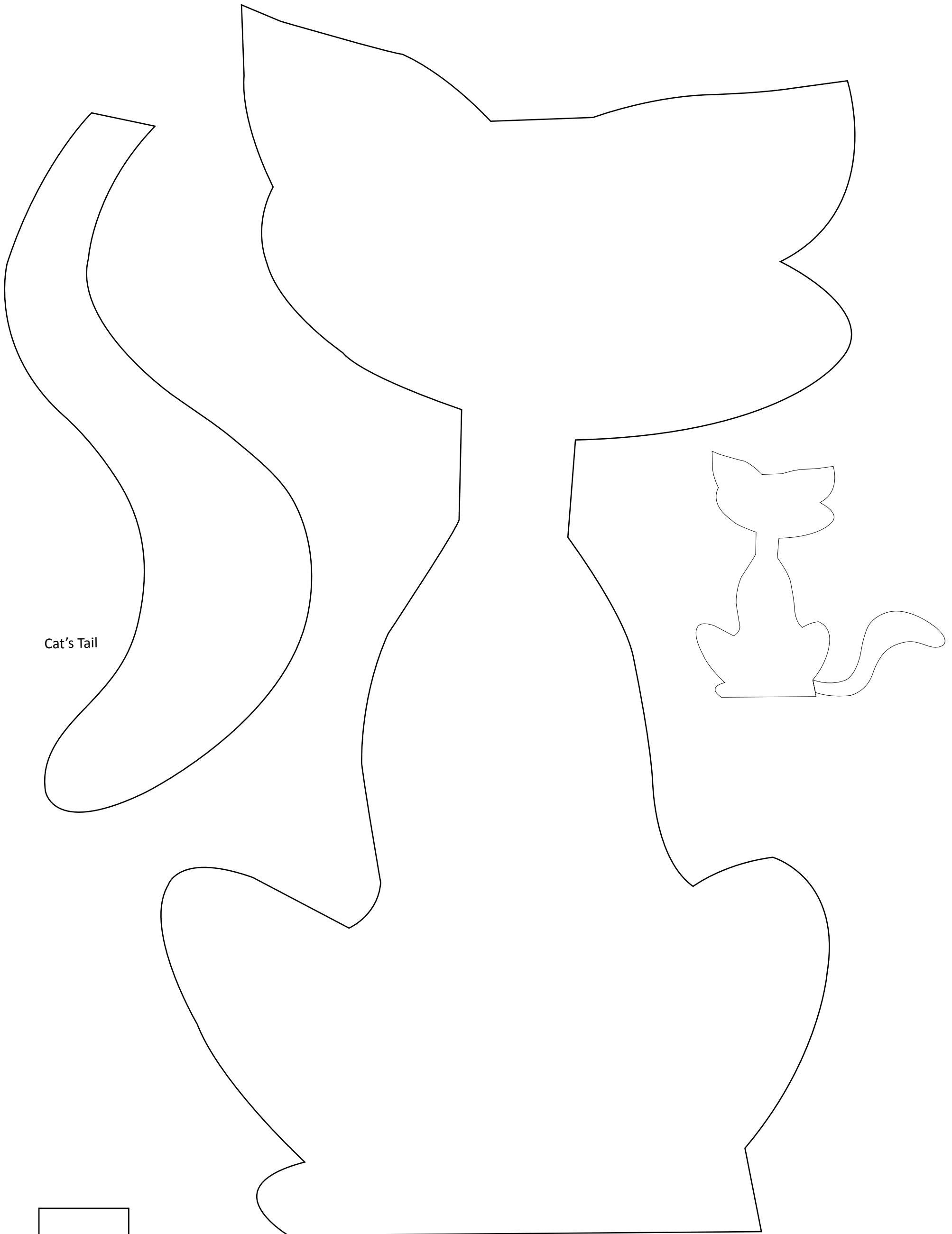




Measure
1 Inch

Witch Face

Witches Celebrate



Cat's Tail

Cat

Measure
1 Inch

Note: Reverse if using fusible applique.