

FABRIC & SUPPLIES for 12" x 12" finished size

- 1/2 yd. red print (for front, back and hanging sleeve)
- F8 dark green print (includes binding)
- 1/4 yard Strip-It (for chrysanthemum)
- 16 chrysanthemum paper pieces
- 1 medium & 1 small circle paper piece
- 14" x 14" piece of batting

From the Strip-It, cut:

- 16 blades and baste to paper pieces (place the paper pieces as shown below in order to cut 2 matching pairs of each red and green print)



From the red print, cut:

- 1 square, 12 1/2" x 12 1/2" for front; 1 square, 15" x 15" for backing; 1 rectangle, 2 1/4" x 11" for hanging sleeve; 1 medium circle and baste to paper piece

From the dark green print, cut:

- 3 strips, 2" x 22" for binding; 1 small circle and baste to paper piece

INSTRUCTIONS

1. Whipstitch the prepared chrysanthemum blades together, alternating the red/cream and green/cream blades until all 16 blades are whipstitched together. Press well on both sides. Remove basting and paper pieces.

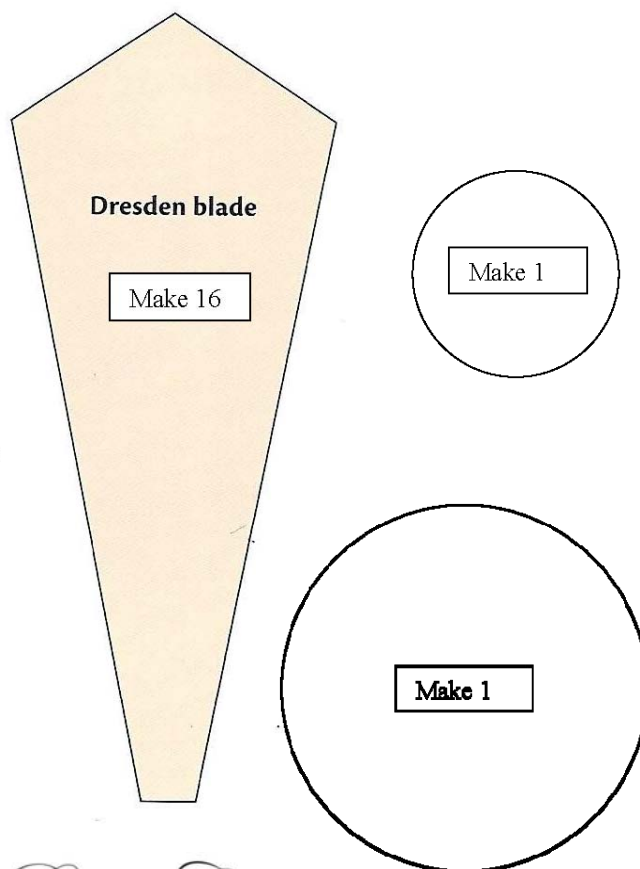
2. Center the chrysanthemum onto the 12 1/2" x 12 1/2" red print square. Pin or appliqué glue to the block. Hand or machine appliqué around the chrysanthemum. Repeat with the medium and small circles.



3. Quilt as desired and bind with the 2" dark green strips. Press a double 1/4" hem onto each end of the hanging sleeve. Press in half, wrong sides together. Center and align the hanging sleeve with the raw edges along the top raw edge of the quilt and stitch just inside the seam line. Hand stitch the folded edge of the sleeve to the back of the quilt.



12" x 12"



Bloom Creek

www.bloomcreek.com
vickibellino@charter.net
(530) 722-9096