

Belle Rose



Size: Approximately 40" W x 51" H

Quilt designed by Marinda Stewart
Confident Beginner



118 West 22nd Street 5th Floor New York, NY 10011
Tel: 212.704.0774 Fax: 212. 633. 0272 email: info@michaelmillerfabrics.com

www.michaelmillerfabrics.com

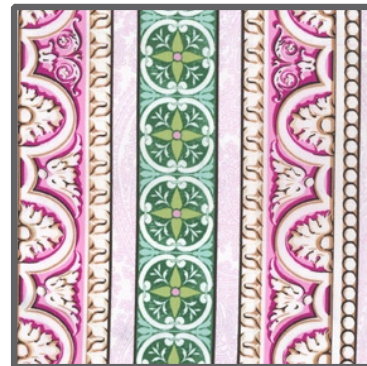
FABRIC REQUIREMENTS



DC4783 Pink Belle Rose
3/4 yard



DC4900 White Beau Papillon
1/4 yard



DC4898 Pink Architectural Stripe
1 yard



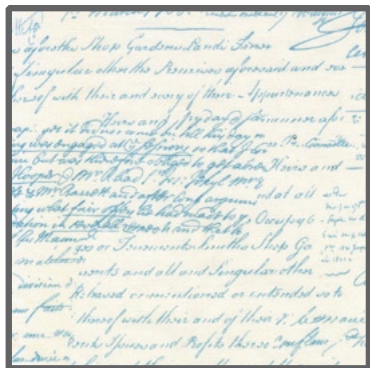
DC4786 Aqua Rose Lattice
Fat 1/4



DC4786 Pink Rose Lattice
Fat 1/4



DC4896 Celery Posh Paisley
Fat 1/4



CX4521 Breeze Old Script
Fat 1/4



DC4896 Orchid Posh Paisley
Fat 1/8



CX4110 Rose Charlotte
Fat 1/8



CX4350 Lime Petals
1/4 yard



CX4350 Aqua Petals
1/4 yard



DC4897 Pink Fresco Stripe
3/8 yard

Backing & Batting 45" x 60"

"Belle Rose"

Quilt by Marinda Stewart

Size: Approximately 40"W x 51"H Skill Level: Confident Beginner

Materials

Fabric	Yardage	Cutting
* DC4783 Pink Belle Rose	3/4 yard	(1) 18 1/2" W x 25 1/2" H (4) 4 1/2" x 17 1/2"
DC4900 White Beau Papillon	1/4 yard	(4) 3" x 5 1/2" (2) 4 1/2" x 17 1/2"
* DC4898 Pink Architectural Stripe	1 yard	(2) 3 1/2" x 18 1/2" (2) 3 1/2" x 32 1/2"
DC4786 Aqua Rose Lattice	Fat 1/4	(4) 3" x 5 1/2" (4) 5" squares
DC4786 Pink Rose Lattice	Fat 1/4	(4) 3" x 5 1/2" (4) 5" squares
DC4896 Celery Posh Paisley	Fat 1/4	(4) 3" x 5 1/2" (4) 5" squares
CX4521 Breeze Old Script	Fat 1/4	(4) 3" x 5 1/2" (4) 5" squares
DC4896 Orchid Posh Paisley	Fat 1/8	(4) 3" x 5 1/2"
CX4110 Rose Charlotte	Fat 1/8	(4) 3" x 5 1/2"
CX4350 Lime Petals	1/4 yard	(2) 1 1/2" x 30 1/2" (2) 1 1/2" x 37 1/2"
CX4350 Aqua Petals	1/4 yard	(4) 1 1/2" x 18 1/2" (2) 1 1/2" x 35 1/2"
DC4897 Pink Fresco Stripe	3/8 yard	(5) 2 1/2" x W.O.F. - Binding

* One way print. Cut vertically.

Also Needed:

45" x 60" backing & batting, threads to match, scissors, straight pins, acrylic ruler, rotary cutter, and mat.

Disclaimers

This pattern is provided as a courtesy to quilt stores, catalogs, and quilters. Michael Miller Fabrics, LLC is not responsible for the accuracy of any kits packaged to accompany this pattern. Please direct any inquiries to the kit maker.

Yardage requirements for this pattern may allow for excess yardage to accommodate specific placement of motifs or to allow for any fussy-cutting to achieve the finished quilt design.

While every attempt has been made to give accurate measurements, yardage requirements, and construction directions; this does not allow personal variations in measuring, cutting, and or sewing. The enclosed directions were used in the construction of the original quilt.

Directions

1. Sew one CX4350 Aqua 1 1/2" x 18 1/2" piece to the top and bottom of the DC4783 18 1/2" W x 25 1/2" H panel.
2. Sew one DC4898 3 1/2" x 18 1/2" piece to the top and bottom of the panel.
3. Repeat step #1. Sew one CX4350 Aqua 1 1/2" x 35 1/2" piece to each side of the quilt.
4. Randomly piece (14) 3 1/2" x 5 1/2" pieces together along the 5 1/2" edge using two each of DC4786 Aqua, DC4786 Pink, DC4896 Celery, DC4896 Orchid, CX4521, CX4110, and DC4900. Make two rows. Sew one to each side of the quilt.
5. Sew one CX4350 Lime 1 1/2" x 30 1/2" piece to the top and bottom of the quilt. Sew one CX4350 Lime 1 1/2" x 37 1/2" piece to each side of the quilt.
6. To make a right square triangle, place one DC4786 Aqua 5" square right sides together on top of one DC4896 Celery 5" square. Draw a diagonal line from one corner to the opposite corner. Sew 1/4" on each side of the drawn line. Cut apart. Press open. Yield is (2) right square triangles. Make (8). Repeat using DC4786 Pink and CX4521. Total (16) blocks. Trim each to an accurate 4 1/2" square.
7. Alternate (4) each of the right square triangle blocks. Sew together in a row of eight. Make two rows. Sew one to the top and one to the bottom of the quilt.
8. Sew one DC4898 3 1/2" x 32 1/2" piece to the top and bottom of the quilt.
9. Sew one DC4783 4 1/2" W x 17 1/2" H piece to each end of each DC4900 4 1/2" x 17 1/2" piece. Sew one strip to each side of the quilt.
10. Layer backing, batting, and quilt top. Baste.
11. Quilt as desired.
12. Bind quilt using DC4897 pieced with the stripe as needed for length.