

BUCKAROO

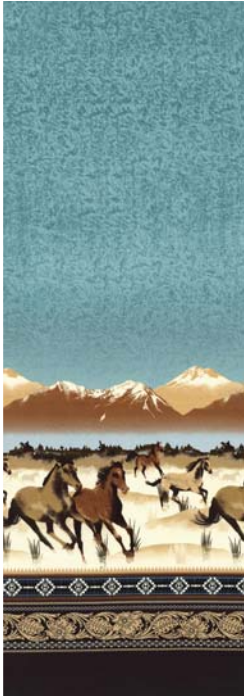
From the Round Up
Collection - July 2015



michae|miller FABRICS

SIZE: 63" W X 78" H | QUILT BY HEIDI PRIDEMORE | LEVEL: INTERMEDIATE

FABRIC REQUIREMENTS



CX6769_RANCH
ROUND UP BORDER
1/2 YARD



CX6760_CREAM
MARSHALL
1/4 YARD



CX6760_BROWN
MARSHALL
7/8 YARD



CX6759_BROWN
FLINT
1/4 YARD



CX6754_DENIM
COWBOY FILIGREE
1 1/4 YARDS
INCLUDES BINDING



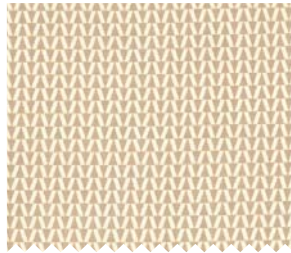
CX6754_CREAM
COWBOY FILIGREE
1 1/4 YARDS



CX6758_BROWN
ARROWHEAD
1 YARD



CX6759_CREAM
FLINT
1/3 YARD



CX6758_CREAM
ARROWHEAD
3/8 YARD



CX6751_CREAM
RODEO
2/3 YARD
5 YARDS (BACKING)



CX6752_CREAM
FENCE RAIL
1 1/3 YARDS

"Cowboy Group - Quilt 1"

Quilt by Heidi Pridemore

Size: Approximately 63" x 78" Skill Level: Intermediate

Materials

Cutting instructions

Please Note: All strips are cut across the width of fabric (WOF) from selvage to selvage edge unless noted otherwise.

	Fabric	Yardage	Cutting
(A)	CX6769 - Ranch Round-up Border - Ranch	½ yard	• Cut one 16 ½" x 24 ½" WOF strip.
(B)	CX6752 - Cream Fence Rail – Cream	1 ⅓ yards	Note: Make the cuts in the order listed below. • Cut two 8 ½" X 28 ½" WOF strips. • Cut two 5" x 27 ½" strips from the length of fabric (LOF).
(C)	CX6754 - Cream Cowboy Filigree – Cream	1 ¼ yards	• Cut six 3 ⅞" x WOF strips. Sub-cut strips into fifty-six 3 ⅞" squares. • Cut five 3 ½" x WOF strips. Sub-cut strips into fifty-six 3 ½" squares.
(D)	CX6758 - Cream Arrowhead – Cream	⅜ yard	• Cut three 3 ½" x WOF strips. Sub-cut strips into twenty-eight 3 ½" squares.
(E)	CX6759 - Cream Flint – Cream	⅓ yard	• Cut two 4 ¼" x WOF strips. Sub-cut strips into fourteen 4 ¼" squares. Cut the squares across both diagonals to make fifty-six triangles.
(F)	CX6759 - Brown Flint – Brown	¼ yard	• Cut one 4 ¼" x WOF strip. Sub-cut strip into seven 4 ¼" squares. Cut the squares across both diagonals to make twenty-eight triangles.
(G)	CX6760 - Cream Marshall – Cream	¼ yard	• Cut one 3 ½" x WOF strip. Sub-cut strip into seven 3 ½" squares.
(H)	CX6754 - Denim Cowboy Filigree – Denim	1 ¼ yards	• Cut one 4 ¼" x WOF strip. Sub-cut strip into seven 4 ¼" squares. Cut the squares across both diagonals to make twenty-eight triangles. • Cut five 3 ½" x WOF strips. Sub-cut strips into fifty-six 3 ½" squares. • Cut seven 2 ½" x WOF strips for the binding.
(I)	CX6751 - Cream Rodeo – Cream	⅔ yard	• Cut two 9 ½" x WOF strips. Sub-cut strips into seven 9 ½" squares.
(J)	CX6758 - Brown Arrowhead – Brown	1 yard	• Cut two 2" x 24 ½" WOF strips. • Cut one 2" x WOF strip. Sub-cut strip into two 2" x 19 ½" strips. • Cut three 1 ½" x WOF strips. Sew the strips together end to end with diagonal seams and cut two 1 ½" x 43 ½" strips. • Cut two 1 ½" x 30 ½" strips. • Cut four 2" x WOF strips. Sew the strips together end to end with diagonal seams and cut two 2" x 75 ½" strips. • Cut four 2" x WOF strips. Sew the strips together end to end with diagonal seams and cut two 2" x 63 ½" strips.
(K)	CX6760 - Brown Marshall – Brown	⅞ yard	• Cut six 3 ⅞" x WOF strips. Sub-cut strips into fifty-six 3 ⅞" squares.
Backing	CX6751 - Cream Rodeo – Cream	5 yards	• Cut two 86" x WOF strips. Piece the strips together and trim to make the 71" x 86" pieced backing.

You will also need:

• 71" x 86" batting, threads to match, scissors, straight pins, acrylic ruler, rotary cutter and mat.

Disclaimers

This pattern is provided as a courtesy to quilt stores, catalogs and quilters. Michael Miller Fabrics, LLC is not responsible for the accuracy of any kits packaged to accompany this pattern. Please direct any inquiries to the kit maker.

Yardage requirements for this pattern may allow for excess yardage to accommodate specific placement of motifs or to allow for any fussy-cutting to achieve the finished quilt design.

While every attempt has been made to give accurate measurements, yardage requirements and construction directions; this does not allow personal variations in measuring, cutting or sewing. The enclosed directions were used in the construction of the original quilt.

Block Assembly

- Place one $3\frac{7}{8}$ " Fabric C square on top of one $3\frac{7}{8}$ " Fabric K square, right sides together. Draw a line across the diagonal of the top square (Fig. 1). Sew $\frac{1}{4}$ " away from each side of the drawn diagonal line (Fig. 1). Cut the two squares apart on the drawn diagonal line (Fig. 2) to make two CK units (Fig. 3). Trim the CK units to measure $3\frac{1}{2}$ " square. Repeat to make (112) $3\frac{1}{2}$ " CK units total.

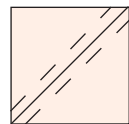


Fig. 1

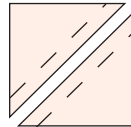


Fig. 2

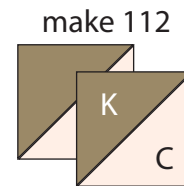


Fig. 3

- Sew two Fabric E triangles, one Fabric H triangle and one Fabric F triangle together to make one HEF block (Fig. 4). Repeat to make twenty-eight HEF blocks total.



Fig. 4

- Follow Figure 5 and sew four $3\frac{1}{2}$ " Fabric C squares, eight CK units, four $3\frac{1}{2}$ " Fabric H squares, four $3\frac{1}{2}$ " Fabric D squares, four HEF blocks and one $3\frac{1}{2}$ " Fabric G square together to make one $15\frac{1}{2}$ " Block One. Repeat to make seven Block Ones total.

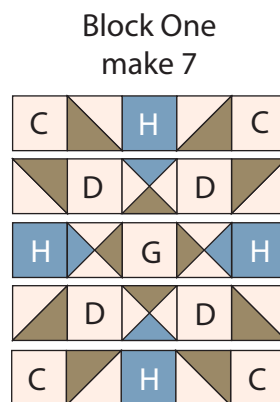


Fig. 5

- Follow Figure 6 and sew four $3\frac{1}{2}$ " Fabric C squares, eight CK units, four $3\frac{1}{2}$ " Fabric H squares and one $9\frac{1}{2}$ " Fabric I square together to make one Block Two. Repeat to make seven $15\frac{1}{2}$ " Block Twos total.

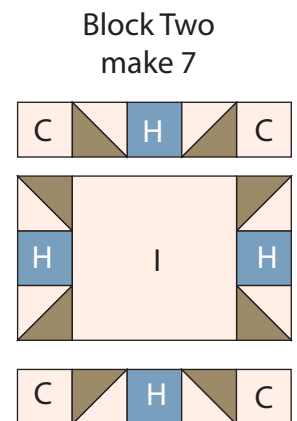
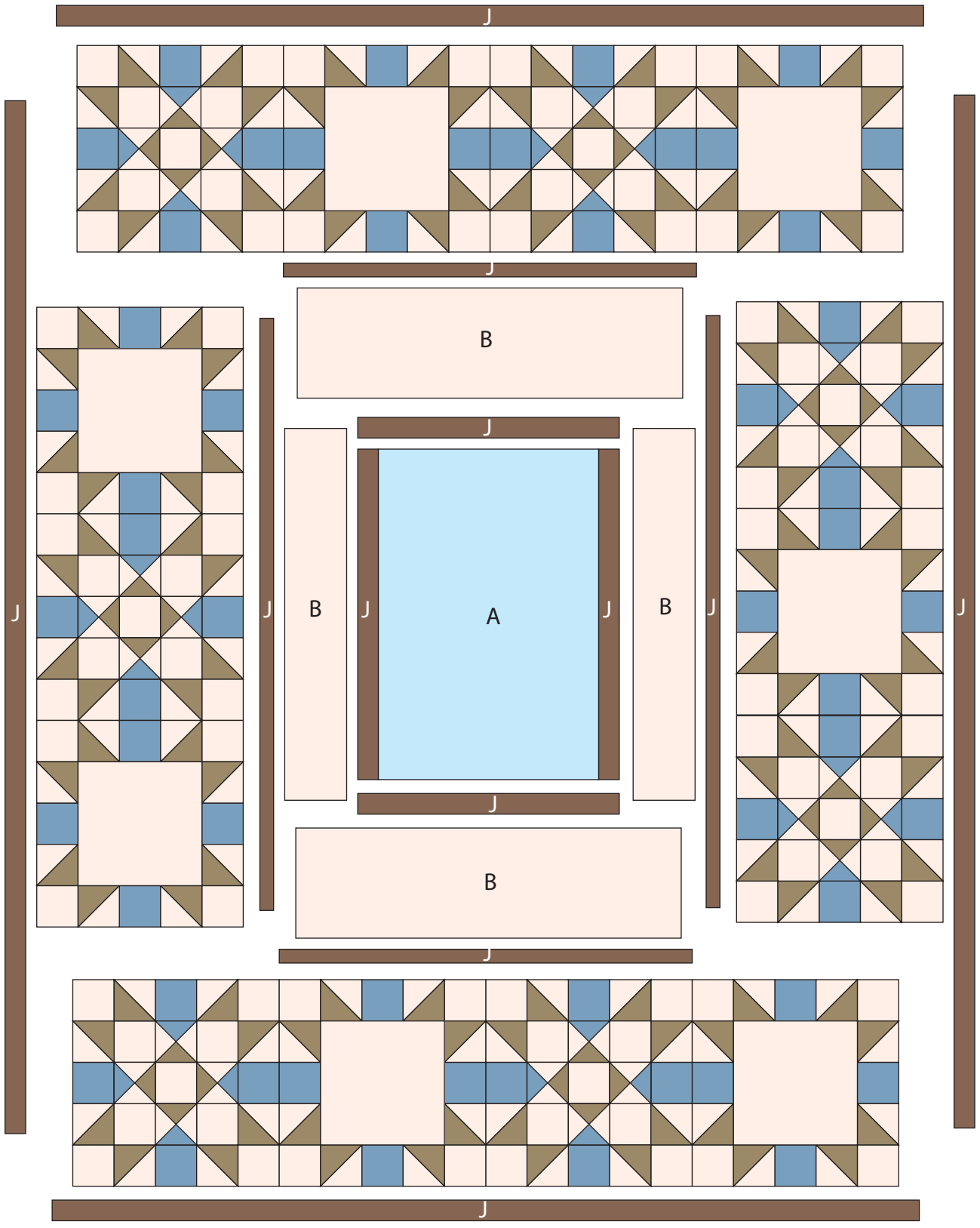


Fig. 6

- Sew one 2 " x $24\frac{1}{2}$ " Fabric J strip to each side of the $16\frac{1}{2}$ " x $24\frac{1}{2}$ " Fabric A strip. Sew one 2 " x $19\frac{1}{2}$ " Fabric J strip to the top and to the bottom of the Fabric A strip to make the Center Block.

Quilt Top Assembly (*Follow the Quilt Layout while assembling the quilt top.*)

6. Sew one 5" x 27 ½" Fabric B strip to each side of the Center Block. Sew one 8 ½" x 28 ½" Fabric B strip to the top and to the bottom of the Center Block.
7. Sew one 1 ½" x 43 ½" Fabric J strip to each side of the Center Block. Sew one 1 ½" x 30 ½" Fabric J strip to the top and to the bottom of the Center Block.
8. Sew one Block Two to each side of one Block One. Sew this strip to the left side of the Center Block.
9. Sew one Block One to each side of one Block Two. Sew this strip to the right side of the Center Block.
10. Sew two Block Ones and two Block Twos together, alternating them, to make one strip. Repeat to make a second strip. Sew the strips to the top and to the bottom of the Center block.
11. Sew one 2" x 75 ½" Fabric J strip to each side of the Center Block. Sew one 2" x 63 ½" Fabric J strip to the top and to the bottom of the Center Block to make the quilt top.
12. Layer and quilt as desired.
13. Sew the seven 2 ½" x WOF Fabric H strips together, end-to-end with 45-degree seams, to make the binding. Fold this long strip in half lengthwise with wrong sides together and press.
14. Bind as desired.



Quilt Layout