

Downton Abbey® The Egyptian Collection

FABRICS BY KATHY HALL



Palace Garden Quilt Design:
Jean Ann Wright

Quilt Size: 60" x 72"

andoverfabrics.com



About The Egyptian Collection

As a result of Howard Carter finding Tutankhamun, an Egyptian design trend was born. Lotus blossoms, hieroglyphs, amulets, and other Egyptian motifs are captured in this fabric collection. The colors are reminiscent of the precious jewels found in the treasures themselves: lapis, onyx, carnelian, turquoise, and especially gold.

Downton™ and Downton Abbey®. ©2014
Carnival Film & Television Limited. All Rights Reserved.

andover



makower uk
The Henley Studio

Free Pattern Download Available

1384 Broadway New York, NY 10018
Tel. (800) 223-5678 • andoverfabrics.com

6/30/14

Palace Garden



Introducing Andover Fabrics new collection:

Downton Abbey® – The Egyptian Collection by Kathy Hall

Quilt design by Jean Ann Wright

Quilt finishes 60" x 72"

Dramatic fabrics are best displayed in large patches, and these 8" hexagons are just the size to present this unusual collection. Best of all—there are no set-in patches, and the quilt goes together swiftly. Use a commercial hexagon ruler or make templates for this surprisingly easy-to-piece quilt.

Fabric Requirements

		Yardage	Fabric
Fabric A	border	2 yards	7619-ML
Fabric B	binding	5/8 yard	7621-MKB
Fabric C	background	1½ yards	7622-L
10" Squares Pack	hexagons	1 pack	
Backing		4 yards	7625-KT

Also needed: Hexagon Trim Tool (optional) from jeanannquilts.com or template plastic

Cutting Directions

Note: Read assembly directions before cutting patches. The borders include 2" extra length for insurance. WOF designates the width of fabric from selvedge to selvedge (approximately 42" wide).

Fabric A Cut (4) borders 6½" x 62", cut lengthwise

Fabric B Cut (7) strips 2½" x WOF for binding

Fabric C Cut (72) Template 3
Cut (6) Template 4
Cut (6) Template 4 reversed

10" Squares Pack Cut these totals from squares:
Cut (36) Template 1
Cut (6) Template 2

Backing Cut (2) panels 40" x 68", pieced to fit quilt top with overlap on all sides

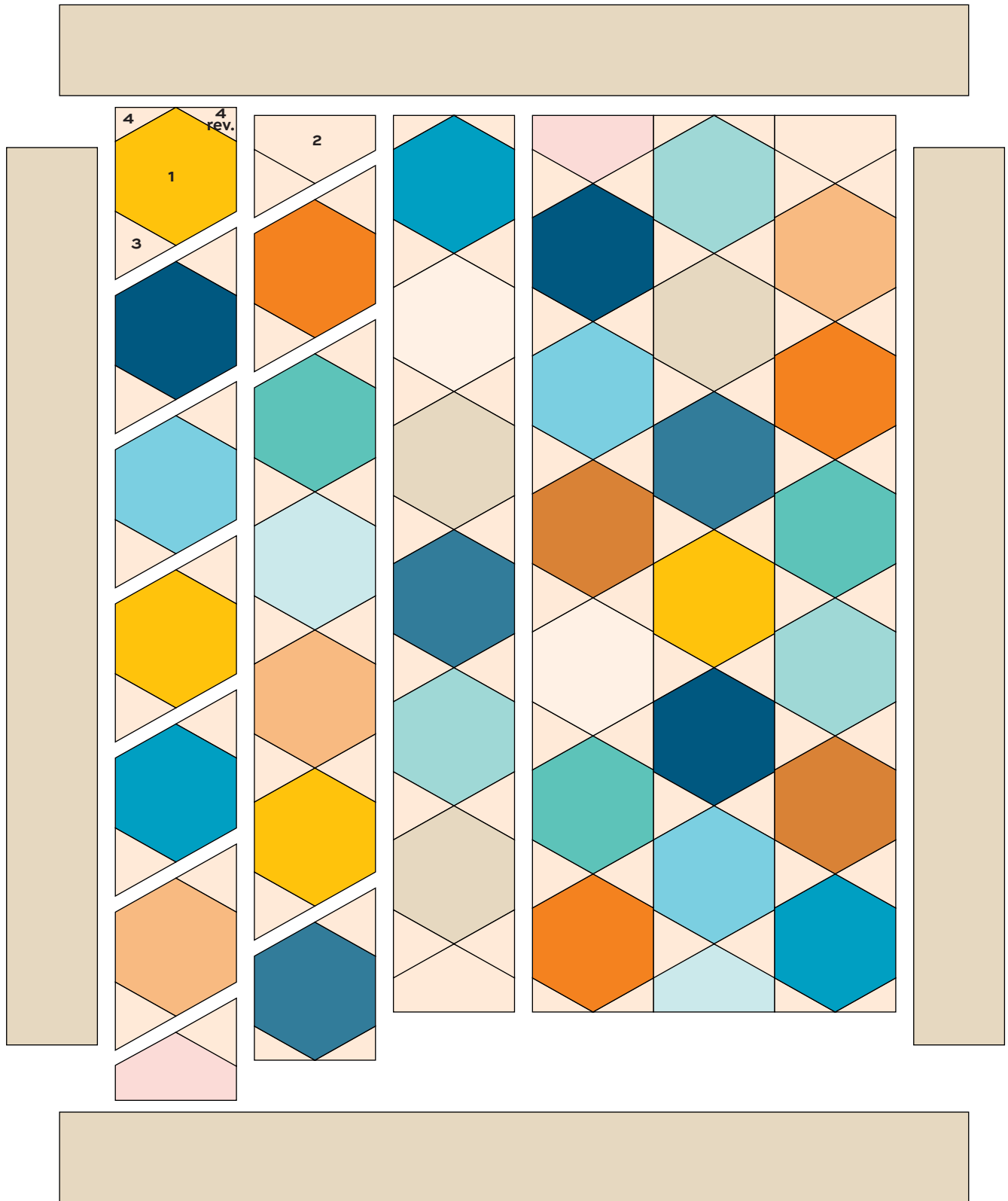
Making the Quilt

1. If you are not using the Hexagon Trim Tool, make a plastic template for each of the shapes, being sure to add ¼" seam allowances to all sides. Cut Templates 1 and 2 from the 10" squares in the pack. Cut Templates 3 and 4 from light Fabric C.
2. Referring to the quilt diagram, position the patches on a large flat surface or design wall in vertical rows as shown. Note that most of the units are made with 1 whole hexagon (Template 1) plus 2 Fabric C triangles (Template 3) stitched to opposite sides. Only the top and bottom hexagons and half hexagons in each row vary from this configuration. Once you are happy with the arrangement of prints, follow the diagram carefully to sew Fabric C triangles to the correct hexagons or half hexagons. Once patches are joined to make a unit, place the unit back on the design wall. Join the next group of patches. Continue in this manner until you have all 7 units sewn for one row, and then join the units to make a row. Make 6 vertical rows. Join the rows.
3. Sew Fabric A borders to sides of the quilt. Trim borders even with the edges of the quilt. Sew borders to the top and bottom and trim.

Finishing the Quilt

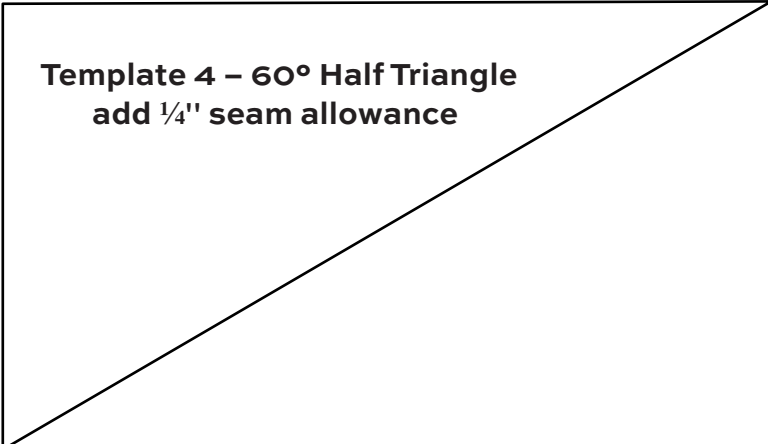
4. Layer the quilt with batting and backing and baste. Quilt in the ditch around borders and block patches and quilt around the printed motifs in the hexagons. Or if you prefer, quilt an overall pattern across the quilt. Bind to finish the quilt.

Palace Garden Quilt

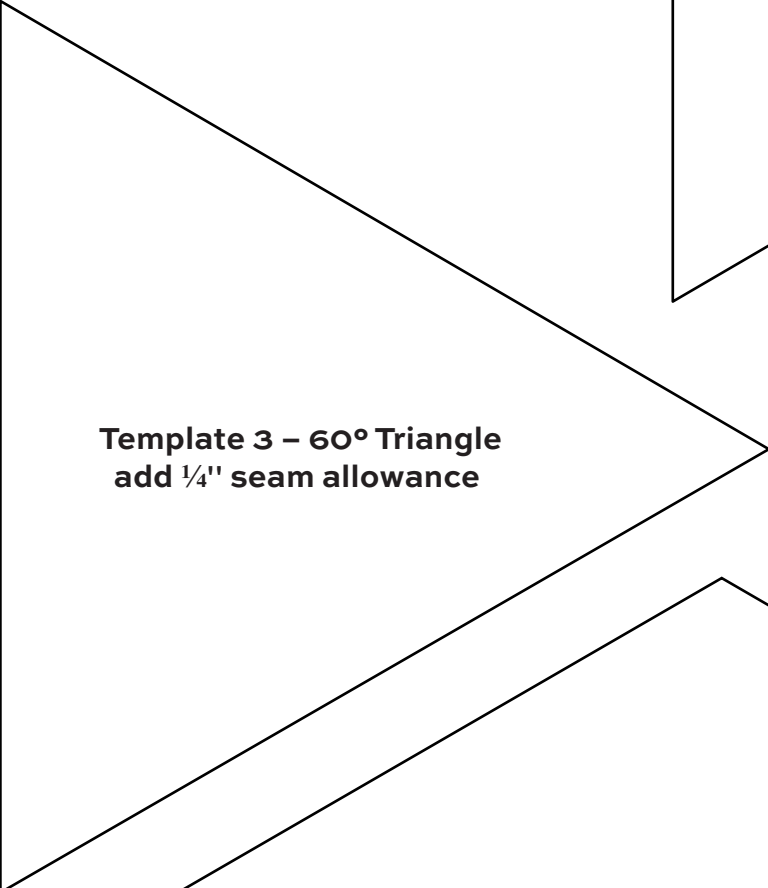


Quilt Diagram

Palace Garden Quilt



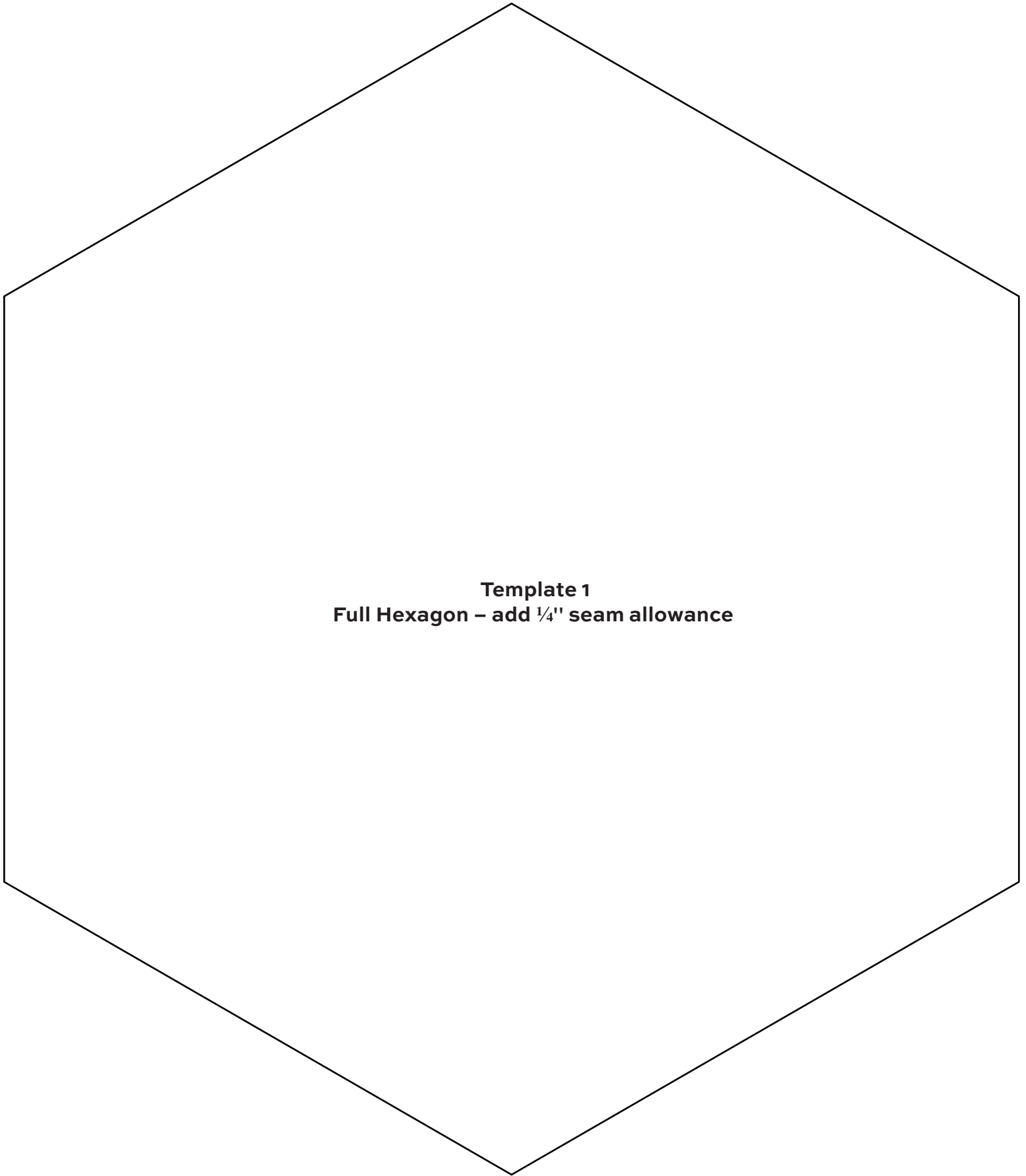
**Template 4 – 60° Half Triangle
add 1/4" seam allowance**



**Template 3 – 60° Triangle
add 1/4" seam allowance**



**Template 2 – Half Hexagon
add 1/4" seam allowance all around outside edges**



Template 1
Full Hexagon – add ¼" seam allowance

Downton Abbey®

The Egyptian Collection



FABRICS BY KATHY HALL



7619-MK



7620-MK



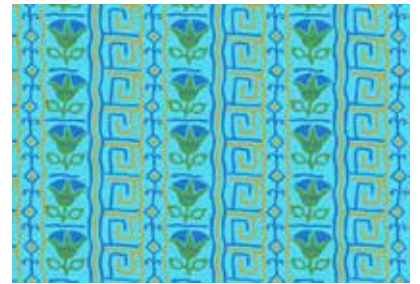
7620-MLN



7619-ML



7621-MKB



7621-MLT



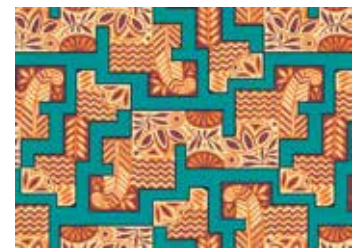
7622-KT



7622-L



7623-KN



7623-LT



7624-KO



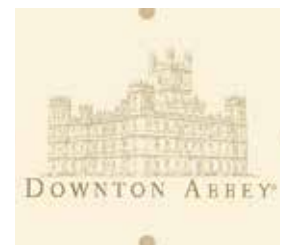
7624-LO



7625-KT



7625-LO



7317-N

*Indicates fabrics used in quilt pattern. Fabrics shown are 25% of actual size.

andover

•
• makower uk
• The Henley Studio

Free Pattern Download Available

1384 Broadway New York, NY 10018
Tel. (800) 223-5678 • andoverfabrics.com