



heirloom

Pat Bravo

QUILT DESIGNED BY PAT BRAVO



COLOR OPTION

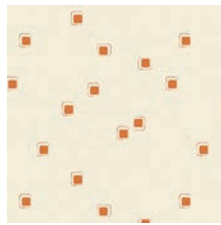
ARTISAN

FABRICS DESIGNED BY PAT BRAVO

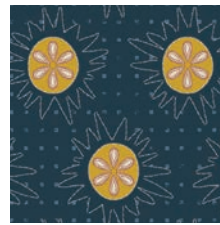
DENIM



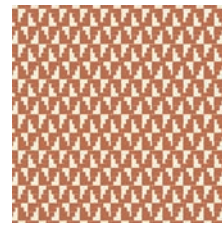
ART-43100
AD LIB BLOOMS SHOUT



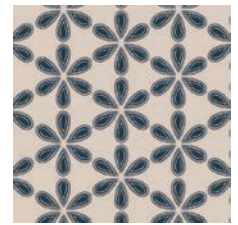
ART-43101
PYROGRAPHY SINOPIA



ART-43102
BETOKEN SHINES



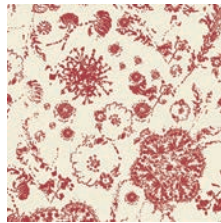
ART-43103
MAHOGANY BLOCKS



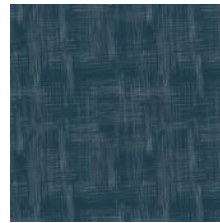
ART-43104
WOODBURN GROOVE DENSE



ART-43105
INTERWILL FERVENCE



ART-43106
FLEURON ETHC CRIMSON



ART-43107
AGED ALLURE WASHED



ART-43108
COLLAR ENDS COPPER

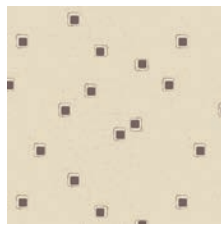


ART-43110
EMBELLISHMENTS GILD

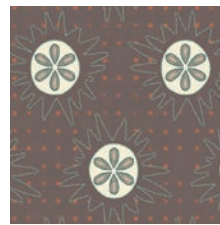
WOOD



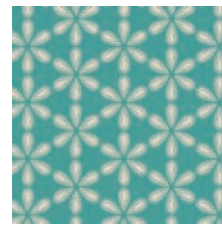
ART-53100
AD LIB BLOOMS QUIET



ART-53101
PYROGRAPHY POPLAR



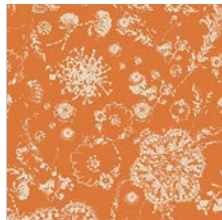
ART-53102
BETOKEN SPARKS



ART-53104
WOODBURN GROOVE CRISP



ART-53105
INTERWILL PATIENCE



ART-53106
FLEURON ETCH AUTUMN



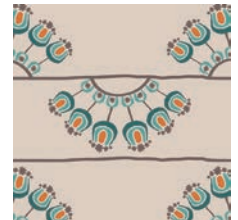
ART-53107
AGED ALLURE RAW



ART-53108
COLLAR ENDS BRONZE



ART-53109
PYROGRAPHY NORTH



ART-53110
EMBELLISHMENTS OPAL





FINISHED SIZE | 58' x 77'

FABRIC REQUIREMENTS

Fabric A	ART-53108	2 ¾ yd.
Fabric B	ART-43103	¾ yd.
Fabric C	ART-43105	¼ yd.
Fabric D	ART-53104	¼ yd.
Fabric E	ART-43108	¼ yd.
Fabric F	PE-454	2 ½ yd.
Fabric G	PE-432	4 ½ yd.
Fabric H	PE-440	2 ½ yd.
Fabric I	ART-43107	¾ yd.

BACKING FABRIC

ART-53106 4 yds. *(Suggested)*

BINDING FABRIC

ART-43107 (Fabric **I**) *(included)*

CUTTING DIRECTIONS

¼" seam allowances are included.
WOF means width of fabric.

- Thirty-six (36) 2½' x WOF strips from fabric **A**.
- Five (5) 2½' x WOF strips from fabric **B**.
- Two (2) 2½' x WOF strips from fabric **C**.
- Two (2) 2½' x WOF strips from fabric **D**.
- Three (3) 2½' x WOF strips from fabric **E**.
- Thirty (32) 2½' x WOF strips from fabric **F**.
- One-hundred & two (102) 1½' x WOF strips from fabric **G**.
- Fifty-four (54) 1½' x WOF strips from fabric **H**.

CONSTRUCTION

Sew all rights sides together with ¼" seam allowance.

- There is one block with five different combinations of fabrics that need to be made for the quilt top construction.
- For combination a take two 2½ x WOF strips from fabric **A**, four 1½ x WOF strips from fabric **G**, two 2½ x WOF strips from fabric **F** and one 2½ x WOF strip from fabric **B**.
- Start attaching the strips in the order **AGFGBGFGA**
- After all the strips are attached together cut two 9 ¾' squares in a 45° angle.

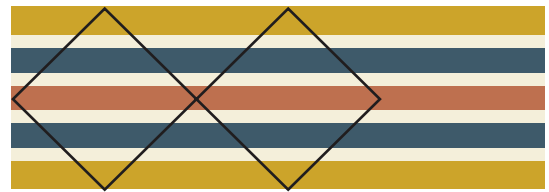


DIAGRAM 1

- Repeat the previous steps five times until you get a total of ten 9 ¾' squares, you should be able to get two squares per WOF attached strips.
- Follow the diagram below for the number of blocks and combinations that need to be made for this quilt top.
- All the block are constructed following the same procedures in block a.

Combination	Order	Squares #
Com b	AGFGEGFGA	6
Com c	AGFGCGFGA	4
Com d	AGFGDGFGA	4
Com e	AGFGAGFGA	8

DIAGRAM 2

- Sub-cut the remaining strips from fabric **G** into sixty-four 9 ¾' strips and sixty-four 11 ¾' as well, set aside.
- Then take the WOF strips from fabric **H** and sub-cut it into sixty-four 11 ¾' strips and also sixty-four 13 ¾' strips, set aside.
- Take one of the blocks made for combination a, two 9 ¾' strips from fabric **G**, two 11 ¾' from fabric **G**, two 11 ¾' strips from fabric **H** and two 13 ¾' strips from fabric **H**.

- Attach the 9 ¾" strips from fabric **G** to top and bottom edges of the combination a block.
- Then, attach the 11 ¾" strips from fabric **G** to the side edges of the block.

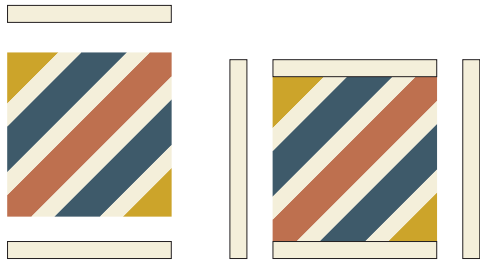


DIAGRAM 3

- Attach the 11 ¾" strips from fabric **H** to top and bottom edges of the combination a block.
- Then, attach the 13 ¾" strips from fabric **H** to the side edges of the block.

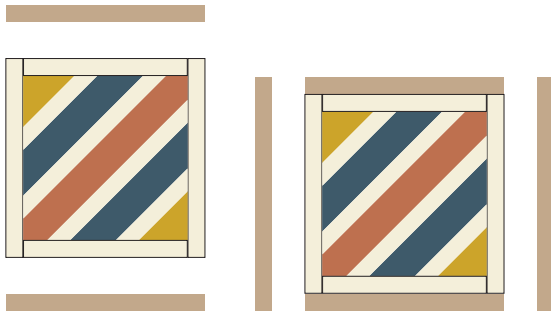


DIAGRAM 4

- Repeat the previous strip attachment a to all of the block combinations in order to complete the quilt top.

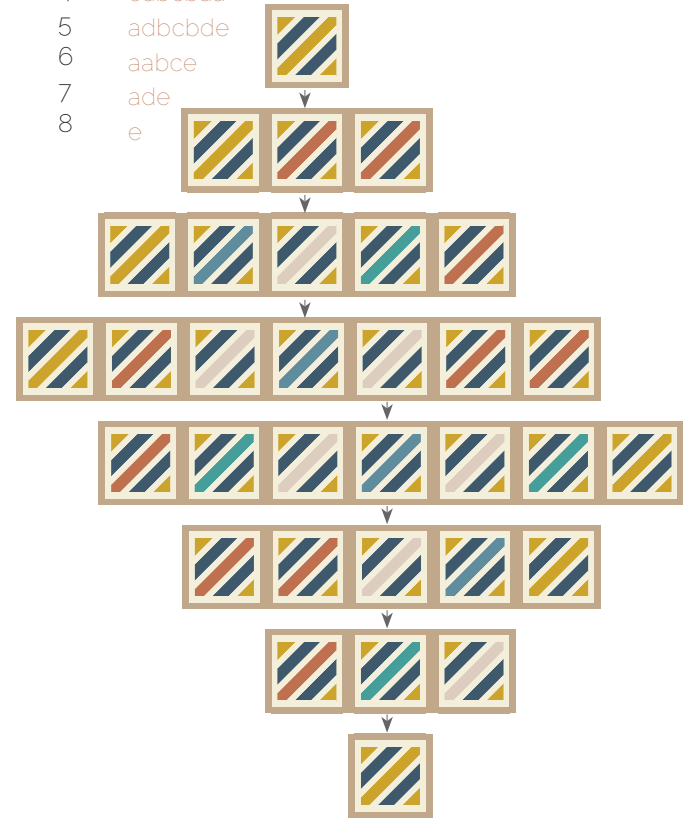
ASSEMBLING THE TOP

Sew all rights sides together with ¼" seam allowance. Press open.

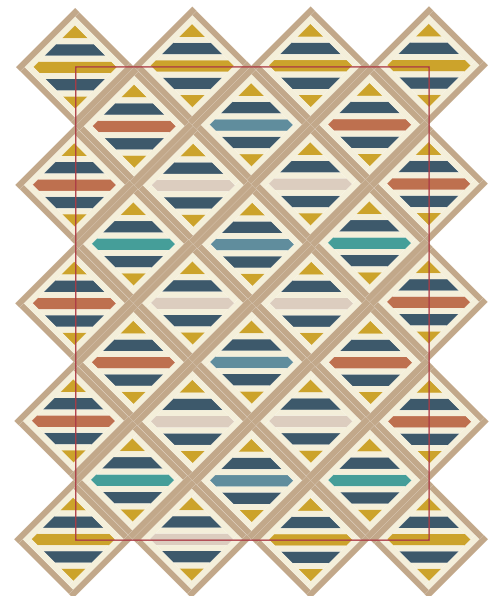
- This quilt top is and on point quilt to accomplish this you will need to attach eight rows, each of them will have a different amount of blocks.
- Follow the cover picture as a reference for block placement.
- Start attaching the rows following the order in the diagram below.
- Attach the rows together (pay close attention to their alignment since not all of them are aligned in the center)

Row # Block order

- 1 e
- 2 eaa
- 3 ecbda
- 4 eabcbaa
- 5 adbcdbde
- 6 aabce
- 7 ade
- 8 e



- Turn the quilt in a 45° angle and trim it to end up with a 58" x 77" rectangle.

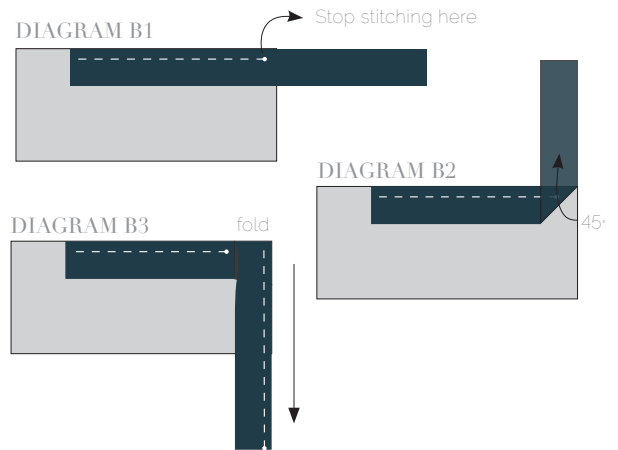


QUILT ASSEMBLY

Sew rights sides together.

- Place BACKING FABRIC on a large surface wrong side up. Stretch it with masking tape against that surface.
- Place BATTING on top of backing fabric.
- Place TOP on top of the batting with right side facing up. Smooth away wrinkles using your hands.
- Pin all layers together and baste with basting thread, using long stitches. You can also use safety pins to join the layers.
- Machine or hand quilt starting at the center and working towards the corners. Remember that quilting motifs are a matter of personal preference. Have fun choosing yours!
- After you finished, trim excess of any fabric or batting, squaring the quilt to proceed to bind it.

- Stop stitching before you reach the last 5 or 6 inches. Cut the threads and remove the quilt from under the machine presser foot. Lay the loose ends of the binding flat along the quilt edge, folding the ends back on themselves where they meet. Press them together to form a crease. Using this crease as the stitching line, sew the two open ends of the binding with right sides together (you can help yourself marking with a pencil if the crease is difficult to see).
- Trim seam to $\frac{1}{4}$ " and press open. Complete the sewing. Turn binding to back of the quilt, turn raw edge inside and stitch by hand using blind stitch.



BINDING

Sew rights sides together.

- Cut enough strips $1\frac{1}{2}$ " wide by the width of the fabric to make a final strip 280" long. Start sewing the binding strip in the middle of one of the sides of the quilt, placing the strip right side down and leaving an approximated 5" tail. Sew with $\frac{1}{4}$ " seam allowance (using straight stitch), aligning the strip's raw edge with the quilt top's raw edge.
- Stop stitching $\frac{1}{4}$ " before the edge of the quilt (**DIAGRAM B 1**). Clip the threads. Remove the quilt from under the machine presser foot. Fold the strip in a motion of 45° and upward, pressing with your fingers (**DIAGRAM B2**). Hold this fold with your finger, bring the strip down in line with the next edge, making a horizontal fold that aligns with the top edge of the quilt (**DIAGRAM B3**). Start sewing at $\frac{1}{4}$ " of the border, stitching all the layers. Do the same in the four corners of the quilt.



artgalleryfabrics.com

NOTE: While all possible care has been taken to ensure the accuracy of this pattern, We are not responsible for printing errors or the way in which individual work varies. Please read instructions carefully before starting the construction of this quilt. If desired, wash and iron your fabrics before starting to cut.

© 2015 Courtesy of Art Gallery Quilts LLC. All Rights Reserved.