

HIDDEN GARDEN

A QUILT PATTERN BY

Suzy  quilts in partnership with  birchQUILTS

Active hyperlinks, so click where you see an underline!



100% ORGANIC FABRIC MADE WITH LOVE, NOT PESTICIDES.

birchfabrics.com + info@birchfabrics.com

Finished size: 50" x 60" | Fabric: [Hidden Garden](#)  [@SuzyQuilts](#) [@BirchFabrics](#) [#BirchFabrics](#)

HIDDEN GARDEN



HANGING TERRARIUM



BUG CATCHER



BUNNY HOP DUSK



BUNNY HOP GREEN



BUNNY HOP MARIGOLD



BUNNY HOP ORANGE



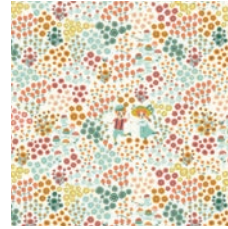
ROSES CORAL
(binding)



ROSES CREAM



GLASS HOUSE
(backing - not included
as an applique leaf)



MEADOW CREAM



MEADOW FROLIC DUSK

FABRIC		CUTTING
Hidden Garden line + Solid Poplin in Coral, Slate, Marigold, Orange, Mineral	1 FQ or ¼ yd. each (18 total)	See Fig.2 on page 3 before cutting 30 Total - Template A
Solid Poplin in Cream	3 ½ yds.	See instructions below
Binding (Roses Coral)	½ yd.	6 - 2 ¼" x WOF
Backing (Glass House)	3 ½ yds.	

EXTRA SUPPLIES = ~ 3 ¾ yds. Paper-backed fusible web (The amount can be changed based on the brand of fusible web you purchase. This yardage is based on using Pellon 805 Wonder Under), Pencil, Fabric Scissors and Reg. Paper Scissors

Background

1. Iron the Cream fabric well. At one end of the fabric, use the fabric scissors to snip through the selvage, then rip from selvage to selvage so that the fabric is on grain. (When fabric is cut off the bolt, it is sometimes cut off grain – causing a “wonky” edge.)
2. Measure 60" from the ripped edge, snip and rip again so you have one piece of fabric that is 42" x 60".
3. Repeat Step 2 so you have 2 pieces of 42" x 60" fabric.
4. With both pieces of fabric, snip right below each selvage and rip the selvages off. The 2 pieces of fabric should now be approximately 41" x 60".
5. Place the 2 pieces together, lining up the 60" edges of fabric. (The solid poplin is reversible, so there is no right or wrong side.), pin and sew together. Press seam to the side.



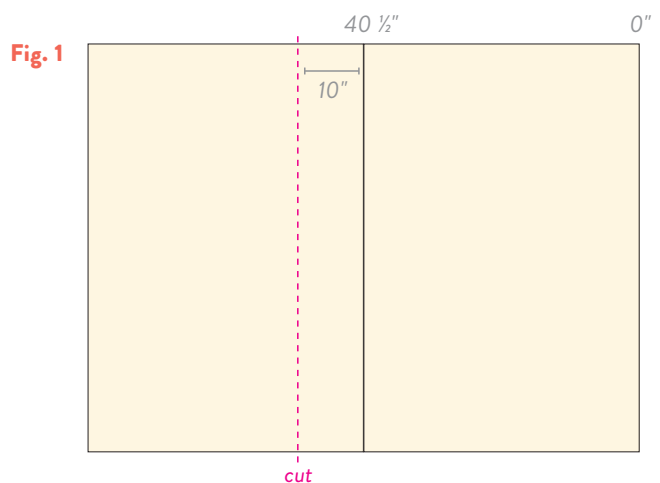
SPROUTLET DUSK



SPROUTLET SHELL

FQ = Fat Quarter: pre-cut fabric measuring approximately 18" x 21" – for this pattern a ¼ yd. or FQ can be used | **WOF** = Width of Fabric: cotton broadcloth commonly used for quilting is 42" | **Seam Allowance** = ¼ inch

6. Measure 50 ½" from one edge and trim the fabric so that the seam created in Step 5 is about 10" from one side and 40 ½" from the other. Doing this will allow the seam on the background fabric to be hidden behind a row of applique leaves. **Fig.1**



- Using Template A and a regular led pencil, draw 30 leaves onto the paper side of the fusible web.
 - Use the reg. paper scissors to cut out the leaf shapes.
 - Following the package instructions, iron the fusible web to the back side of the fat quarters. Once the fusible web is ironed to the fabric, use the fabric scissors to cut the leaf shapes from the fabric. Peel off the paper backing.
 - Lay out the large background fabric and arrange the 30 leaf pieces according to **Fig.2**.
 - Pin the leaves in place, then gently take the quilt top to the ironing board and adhere the appliqué leaves according to the fusible web instructions. *Tip! If you have a small portable ironing board surface, or even a few towels stacked on top of each other, place that underneath the quilt top while it is still laying flat on the floor and iron the appliqué pieces – that way you can avoid pinning and transporting to an ironing board. Shift the portable ironing board around on the floor so that it is underneath the appliqué area as needed. Fusible Web Tip! Before fusing the leaf pieces to the quilt top, experiment with scrap fabric so that you know how much steam and heat is required to achieve the most secure adherence.*
- Once all of the leaves are firmly adhered to the background fabric, layer the backing right side down and the batting and quilt top right side up. Baste as desired.
 - Starting with the middle row of leaves, stitch around the edge of each leaf. Once all of the leaves are stitched down, quilt as desired. *Tip! Another option is to stitch down the appliqué leaves before quilting.*
 - Trim the excess batting and backing and square up the quilt.
 - Join the binding strips together with a diagonal seam. Trim and press seams open.
 - Once all of the strips are sewn together, fold the strip in half lengthwise, wrong sides together, and press flat to create the binding. Sew the binding to the front of your quilt by lining up the raw edges.
 - After binding is sewn to your quilt, fold it over and either machine stitch or hand stitch the binding to finish off the edges of the quilt.
 - Post your finished quilt to Instagram and use #HiddenGardenQuilt.

Fig. 2

Some of the prints will have two leaves and some will have only one. Once the leaves are arranged on the background fabric, step back and double check that the colors and color value is evenly dispersed throughout. After you decide that the leaves are well placed, fuse them onto the background fabric.





Check out the Suzy Quilts YouTube channel for more tutorial videos! bit.ly/suzyquilts

IN-DEPTH TUTORIAL! This step-by-step tutorial and video will explain how to machine quilt. Click bit.ly/machine-quilt

IN-DEPTH BINDING TUTORIAL! This easy-to-follow tutorial and video will show every step in sewing binding on a quilt. Click bit.ly/quilt-binding

TEMPLATE IS 100% TO SCALE

Do not add a 1/4" to this template – it is the exact shape to cut for raw edge appliqué. If you would prefer to use a different appliqué technique, the dotted guidelines add a 1/4" seam allowance.

1/4"

TEMPLATE A

1" test square