

KOI POND MOSAIC

michael miller FABRICS



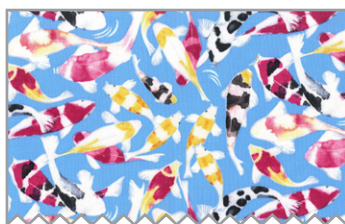
SIZE: 40" X 56" | CONFIDENT BEGINNER LEVEL | DESIGNED BY MARINDA STEWART

FABRIC REQUIREMENTS

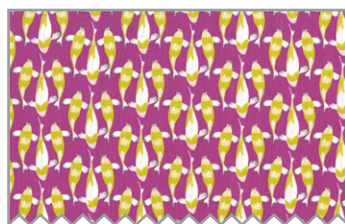
Backing and Batting: 45" x 60"



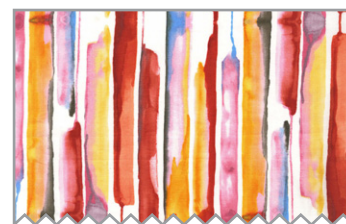
DC7432 Magenta
Blooming Lotus
5/8 yard



DC7439 Wave
Koi Dance
Fat 1/6



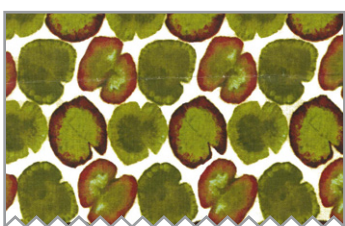
DC7438 Rose
Tiny Koi
Fat 1/6



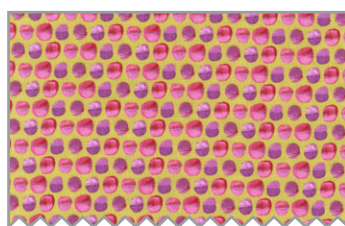
DC7436 White
Cool Ripples
3/8 yard



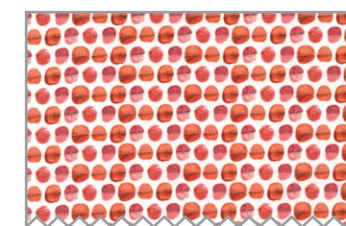
DC7437 White
Bubbles
3/8 yard



DC7435 Lime
Lotus Leaf
3/8 yard



DC7434 Lime
Tiny Droplet
Fat 1/6



DC7434 White
Tiny Droplet
Fat 1/6



CM0376 Gold
Fairy Frost
Fat 1/6



K1145 (Dark Coral)
Krystal
Fat 1/6



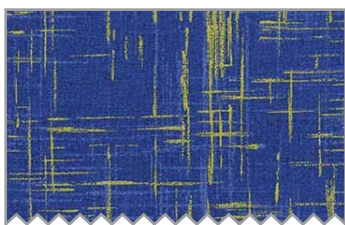
CJ4816 Mustard
Painter's Canvas
3/8 yard



CJ4816 Primrose
Painter's Canvas
3/8 yard



Cj4816 Plum
Painter's Canvas
5/8 yard



MD4816 Blue
Painter's Canvas
Fat 1/6



MD4816 Coral
Painter's Canvas
Fat 1/6



MD4816 Limeade
Painter's Canvas
Fat 1/6

Koi Pond Mosaic
 Quilt Designed by Marinda Stewart
 Size: 40" W x 56" H
 Skill Level: Confident Beginner

Fabrics	Yardage	Cutting
DC7432 Magenta Blooming Lotus	5/8 yard	Fussy-cut 23 Lotus motifs
CJ4816 Mustard Painter's Canvas	3/8 yard	(3) 10" squares
CJ4816 Primrose Painter's Canvas	3/8 yard	(3) 10" squares
DC7435 Lime Lotus Leaf	3/8 yard	(3) 10" squares
DC7496 White Cool Ripples	3/8 yard	(3) 10" squares
DC7437 White Bubbles	3/8 yard	(3) 10" squares
CJ4816 Plum Painter's Canvas	5/8 yard	(5) 2 1/2" x W.O.F. - binding (2) 10" squares
K1145 (Dark Coral) Krystal	Fat 1/6 *	(2) 10" squares
CM0376 Gold Fairy Frost	Fat 1/6	(2) 10" squares
DC7434 Lime Tiny Droplet	Fat 1/6	(2) 10" squares
DC7434 White Tiny Droplet	Fat 1/6	(2) 10" squares
DC7438 Rose Tiny Koi	Fat 1/6	(2) 10" squares
DC7439 Wave Koi Dance	Fat 1/6	(2) 10" squares
MD4816 Blue	Fat 1/6	(2) 10" squares

Painter's Canvas		
MD4816 Coral Painter's Canvas	Fat 1/6	(2) 10" squares
MD4816 Limeade Painter's Canvas	Fat 1/6	(2) 10" squares

Also Needed: 45" x 60" backing, 45" x 60" batting, scissors, straight pins, threads to match, rotary cutter, acrylic ruler, mat, and fusible web.

* A piece of fabric (12" x 22")

Directions:

1. Divide (1) 10" square of each of the (15) fabrics into three combinations of (5) fabrics each. From one combo, place one square of each fabric right sides up on top of each other. Cut randomly into (5) different sized pieces. Re-assemble the square using one piece of each of the different fabrics. Trim the square to 8 1/2" squares. Repeat for the remaining four blocks. Set aside. Repeat the process with the remaining two combinations, varying the cutting pattern with each combination. Yield (15) 8 1/2" blocks.
2. Repeat Step #1 using (15) 10 1/2" squares divided into (3) different combinations than Step #1. Yield (15) blocks.
3. Repeat Step #1 using the remaining (5) 10 1/2" squares. Yield (5) blocks. Total blocks (35).
4. Arrange 8 1/2" square blocks in horizontal rows of (5) blocks each. Make (7) rows total. Join rows into quilt top. Set aside.
5. Following manufacturer's directions, iron fusible web to the wrong side of DC7432. Cut out (23) assorted motifs. Remove paper backing. Arrange in clusters as shown or as desired. Fuse in place. Hand or machine stitch raw edges in place.
6. Layer backing, batting, and quilt top. Baste.

NOTE: A small piece of extra batting was placed behind each motif before quilting to add extra dimension.

7. Quilt as desired.
8. Bind quilt using CJ4816 Plum 2 1/2" strips pieced as needed for length.