

# Mixed Bouquet

Free Pattern!



ShabbyFabrics.com

# Mixed Bouquet

## GENERAL INSTRUCTIONS

The sample quilt was sewn with Maywood Studio fabrics including:  
Shadow Play and Welcome Home - Collection One by Jennifer Bosworth



### BEFORE YOU BEGIN

- Please read through all instructions carefully before beginning.
- There are three essentials to creating beautifully pieced blocks:

**ACCURATE CUTTING**

**PRECISE ¼" SEAM ALLOWANCES**

**CAREFUL PRESSING**

It's details like these that distinguish a good quilt from a great quilt!

Being off by even ¼" on any piece can make your finished block ½" too short.

- Some terms and definitions to know:

**RST = Right Sides Together    WOF = Width of Fabric**

- When making this quilt with fabrics other than those shown, you may want to attach swatches to the legend below for reference:



Fabric A  
MAS8360-R



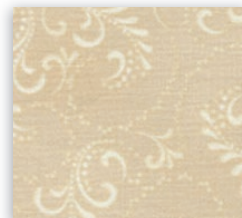
Fabric B  
MAS8366-R



Fabric C  
MAS609-ER



Fabric D  
MAS8368-R



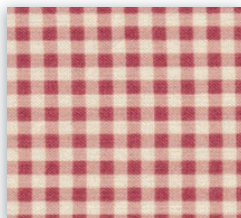
Fabric E  
MAS8366-E



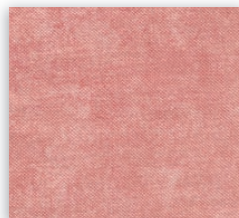
Fabric F  
MAS609-R4



Fabric G  
MAS8363-ER



Fabric H  
MAS610-R4



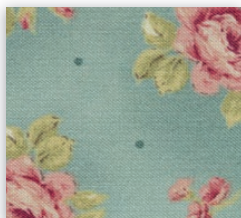
Fabric I  
MAS513-RP



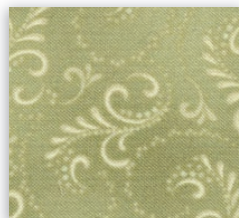
Fabric J  
MAS513-RP2



Fabric K  
MAS8360-Q



Fabric L  
MAS8362-Q



Fabric M  
MAS8366-G

## CUT THE FABRIC

From **Fabric A**, cut:

- (6)  $3\frac{1}{2}$ "  $\times$   $3\frac{1}{2}$ " squares
- (7)  $2$ "  $\times$   $3\frac{1}{2}$ " **rectangles**
- (2)  $2$ "  $\times$   $2$ " squares

From **Fabric B**, cut:

- (40)  $2$ "  $\times$   $2$ " squares

From **Fabric C**, cut:

- (31)  $2$ "  $\times$   $3\frac{1}{2}$ " **rectangles**
- (18)  $2$ "  $\times$   $2$ " squares

From **Fabric D**, cut:

- (2)  $2$ "  $\times$  WOF strips

From **Fabric E**, cut:

- (2)  $2$ "  $\times$  WOF strips

From **Fabric F**, cut:

- (24)  $2$ "  $\times$   $2$ " squares

From **Fabric G**, cut:

- (40)  $3\frac{7}{8}$ "  $\times$   $3\frac{7}{8}$ " squares

From **Fabric H**, cut:

- (16)  $2$ "  $\times$   $2$ " squares
- Enough  $2\frac{1}{2}$ " strips so that, when pieced, **binding** measures at least 226" long.

From **Fabric I**, cut:

- (40)  $2$ "  $\times$   $2$ " squares

From **Fabric J**, cut:

- (5)  $2$ "  $\times$  WOF for **inner borders**

From **Fabric K**, cut:

- (40)  $3\frac{7}{8}$ "  $\times$   $3\frac{7}{8}$ " squares
- See note below for **outer borders\***

From **Fabric L**, cut:

- (6)  $3\frac{1}{2}$ "  $\times$   $3\frac{1}{2}$ " squares
- (7)  $2$ "  $\times$   $3\frac{1}{2}$ " **rectangles**
- (2)  $2$ "  $\times$   $2$ " squares

From **Fabric M**, cut:

- (40)  $2$ "  $\times$   $2$ " squares

\***Fabric K** is your **outer border** fabric. **First determine whether you prefer **pieced borders** or **continuous borders**.**

- For **pieced outer borders**, cut (6)  $5\frac{1}{2}$ "  $\times$  WOF
- For **continuous outer borders**, cut (4)  $5\frac{1}{2}$ "  $\times$  60"

## MAKE (80) HALF-SQUARE TRIANGLE UNITS

Use **Fabric G** and **Fabric K**.

**Step 1:** Place two  $3\frac{7}{8}$ "  $\times$   $3\frac{7}{8}$ " squares RST with the lighter fabric on the top. Draw a line from one corner diagonally to the other corner.

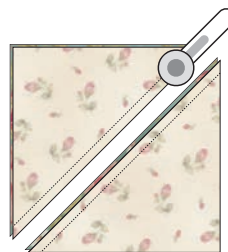
**Step 2:** Sew  $\frac{1}{4}$ " on either side of the drawn line. **Step 3:** Cut on the drawn line. **Step 4:** Open and press seam toward the darker fabric. You will now have two pieces.



Step 1



Step 2



Step 3



Step 4

Continue until you have a total of 80 Half-Square Triangle units. Each Half-Square Triangle unit should be  $3\frac{1}{2}$ "  $\times$   $3\frac{1}{2}$ ".

Sew 62 of the Half-Square Triangle units together, as shown, to make 31 Half-Square Triangle sets. Press seams open. Set aside with the remaining 18 individual Half-Square Triangle units.



*Save Time!*

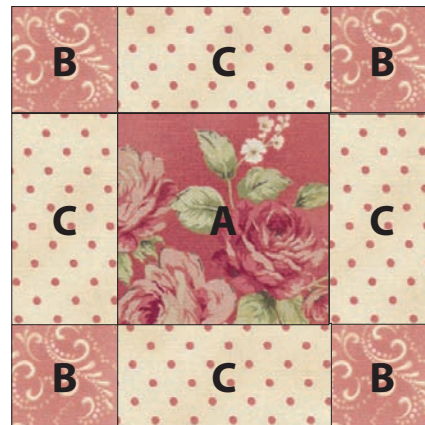
Make it quick-and-easy with  
**3" Star Singles™**  
available at  
[ShabbyFabrics.com](http://ShabbyFabrics.com).

## MAKE (6) 4-CORNERS BLOCKS

Use  $3\frac{1}{2}$ "  $\times$   $3\frac{1}{2}$ " squares from **Fabric A**,  $2$ "  $\times$   $2$ " squares from **Fabric B**, and  $2$ "  $\times$   $3\frac{1}{2}$ " rectangles from **Fabric C**.

Referring to diagram (*right*), sew the blocks together one row at a time, pressing all seams away from Fabric C. Then sew the rows together, pressing seams open.

Continue until you have a total of (6) 4-Corners blocks. Each block should measure  $6\frac{1}{2}$ "  $\times$   $6\frac{1}{2}$ ".



## MAKE (7) PINK/CREAM HALF BLOCKS

Use  $2$ "  $\times$   $3\frac{1}{2}$ " rectangles from **Fabric A** and **Fabric C**, and  $2$ "  $\times$   $2$ " squares from **Fabric B** and **Fabric C**.

Referring to diagram (*right*), sew the block one row at a time, pressing seams away from Fabric C. Then sew the rows together, pressing seams open.

Continue until you have a total of (7) Pink/Cream Half blocks. Each block should measure  $3\frac{1}{2}$ "  $\times$   $6\frac{1}{2}$ ".



## MAKE (6) PATCHED-BORDER BLOCKS

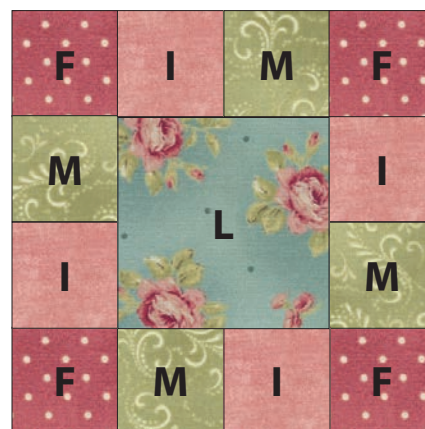
For this block, press all seams open.

Use  $2$ "  $\times$   $2$ " squares from **Fabric F**, **Fabric I**, and **Fabric M**, and  $3\frac{1}{2}$ "  $\times$   $3\frac{1}{2}$ " squares from **Fabric L**.

Referring to diagram (*right*), start with the center row by sewing the I/M units together. Sew I/M units to the sides of the L unit.

Assemble the top and bottom rows. Sew to the top and bottom of the center row.

Continue until you have a total of (6) Patched Border blocks. Each block should measure  $6\frac{1}{2}$ "  $\times$   $6\frac{1}{2}$ ".

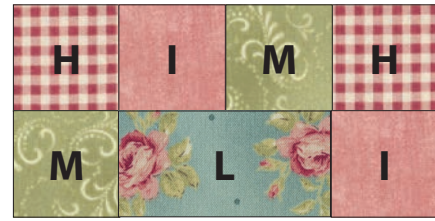


## MAKE (7) PATCHED-BORDER HALF BLOCKS

Use 2" x 2" squares from **Fabric H**, **Fabric I**, and **Fabric M**, and 2" x 3½" rectangles from **Fabric L**.

Referring to diagram (*right*), sew the block one row at a time, then sew the rows together, pressing all seams open.

Continue until you have a total of (7) Patched-Border Half blocks. Each block should measure 3½" x 6½".

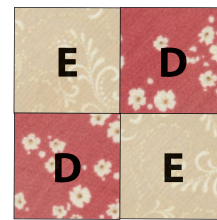


## MAKE (20) PINK/CREAM 4-PATCH UNITS



Referring to the diagram (*left*), sew one **Fabric D** strip to one **Fabric E** strip, pressing seam open. Repeat with second set of Fabric D and Fabric E strips.

Cut each D/E strip into 2" sections. You will need a total of 40 D/E sections.



Referring to the diagram (*right*), sew two sections together to form a 4-Patch unit. Press seams open.

Continue until you have a total of (20) Pink/Cream 4-Patch units. Each 4-Patch unit should be 3½" x 3½".

## MAKE (2) MULTI-COLOR CORNER UNITS

Use 2" x 2" squares from **Fabric H**, **Fabric I**, **Fabric L**, and **Fabric M**.

Referring to diagram (*right*), sew the block one row at a time, then sew the rows together, pressing all seams open.

Repeat to make a total of (2) Multi-Color Corner units. Each unit should measure 3½" x 3½".

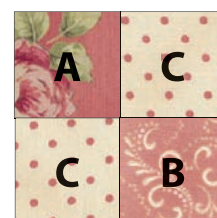


## MAKE (2) PINK/CREAM CORNER UNITS

Use 2" x 2" squares from **Fabric A**, **Fabric B**, and **Fabric C**.

Referring to diagram (*right*), sew the block one row at a time, then sew the rows together, pressing all seams open.

Repeat to make a total of (2) Pink/Cream Corner units. Each unit should measure 3½" x 3½".



## ASSEMBLE THE QUILT

Referring to image (*right*), sew blocks together, row by row, pressing seams open. Join rows, two at a time (Row 1 to Row 2, Row 3 to Row 4, and so on). Finally, join Rows 1/2/3/4 to Rows 4/6/7/8 and to Rows 9/10/11, pressing all seams open.

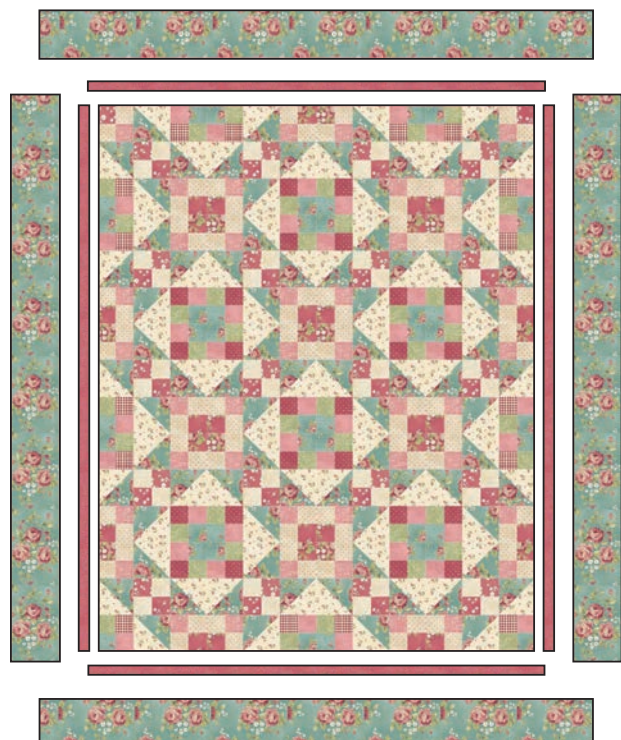
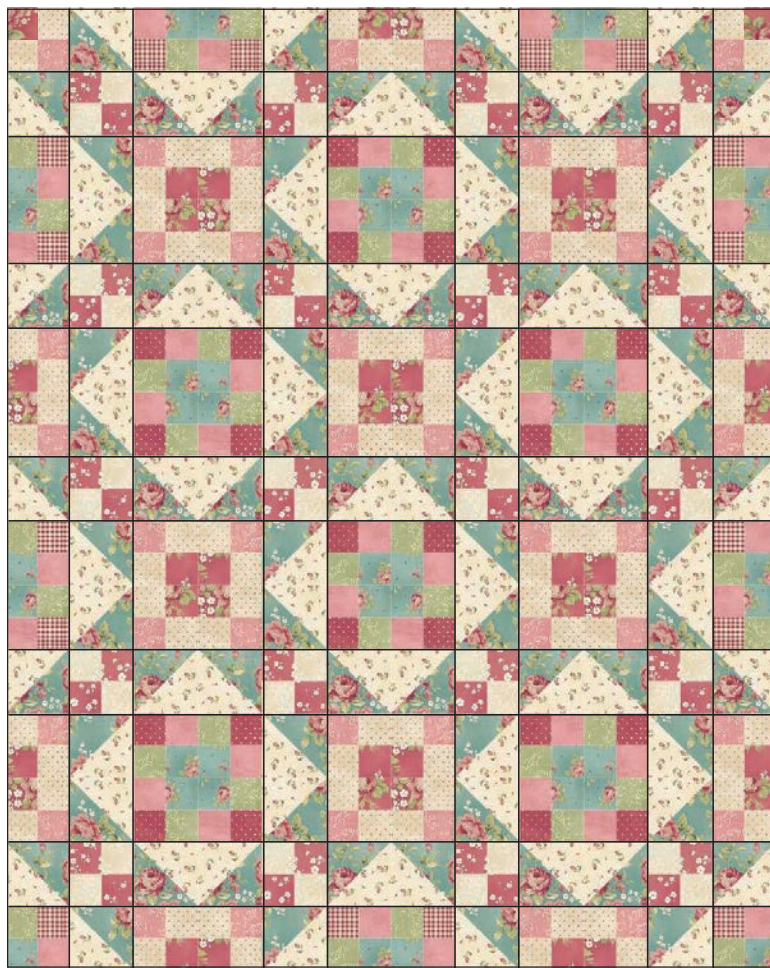
## ADD THE BORDERS

For the following steps, all seams are pressed toward the inner border.

Referring to image (*below*), add borders as shown. Piece all the **inner border** strips into one continuous piece. Sew the **side inner borders FIRST**, then trim to be even with the quilt. Repeat for the **top and bottom inner borders**.

If working with **continuous outer borders**, sew **left and right outer borders FIRST**, followed by the **top and bottom outer borders**.

If working with **pieced borders**, piece all **outer border strips** into one continuous piece. Sew **left and right borders FIRST**, followed by the **top and bottom borders**.



## FINISH THE QUILT

Layer quilt top, batting, and backing. Quilt as desired.

Sew all binding strips into one continuous piece. Fold the binding strip in half lengthwise with wrong sides together and press. Line up raw edges of the binding strip with the raw edge of the quilt. Sew the binding to the front side of the quilt, starting at any side. Turn the binding over and hand stitch to the back of the quilt.

*Enjoy your finished quilt!*

Visit us online 24/7 at  
[ShabbyFabrics.com](http://ShabbyFabrics.com) for beautiful fabrics,  
patterns, kits and BOM projects.

# Mixed Bouquet

Finishes to 49½" × 58½"

## REQUIRED MATERIALS

All fabrics featured are from Shadow Play and Welcome Home - Collection One by Jennifer Bosworth for Maywood Studio.

<b>Fabric A</b> MAS8360-R ( <i>large floral on rose</i> )	¼ yard
<b>Fabric B</b> MAS8366-R ( <i>rose swirl</i> )	¼ yard
<b>Fabric C</b> MAS609-ER ( <i>rose dot on cream</i> )	¾ yard
<b>Fabric D</b> MAS8368-R ( <i>rose baby's breath</i> )	¼ yard
<b>Fabric E</b> MAS8366-E ( <i>cream swirl</i> )	¼ yard
<b>Fabric F</b> MAS609-R4 ( <i>cream dot on rose</i> )	¼ yard
<b>Fabric G</b> MAS8363-ER ( <i>rose ditsy on cream</i> )	⅝ yard
<b>Fabric H</b> MAS610-R4 ( <i>rose gingham</i> ) (includes binding)	⅝ yard
<b>Fabric I</b> MAS513-RP ( <i>rose mottled</i> )	¼ yard
<b>Fabric J</b> MAS513-RP2 ( <i>dark rose mottled</i> )	¾ yard
<b>Fabric K</b> MAS8360-Q ( <i>large floral on teal</i> )	⅝ yard
<b>Fabric L</b> MAS8362-Q ( <i>mid floral dot on teal</i> )	¼ yard
<b>Fabric M</b> MAS8366-G ( <i>green swirl</i> )	¼ yard
<b>Outer Borders*</b> MAS8360-Q (Fabric K) *Choose pieced <b>OR</b> continuous outer borders	
pieced outer borders	1⅛ yard
continuous outer borders	1⅝ yard
<b>Backing</b> MAS8363-EQ (or your choice)	3½ yard

© 2016 Jennifer Bosworth

ShabbyFabrics.com