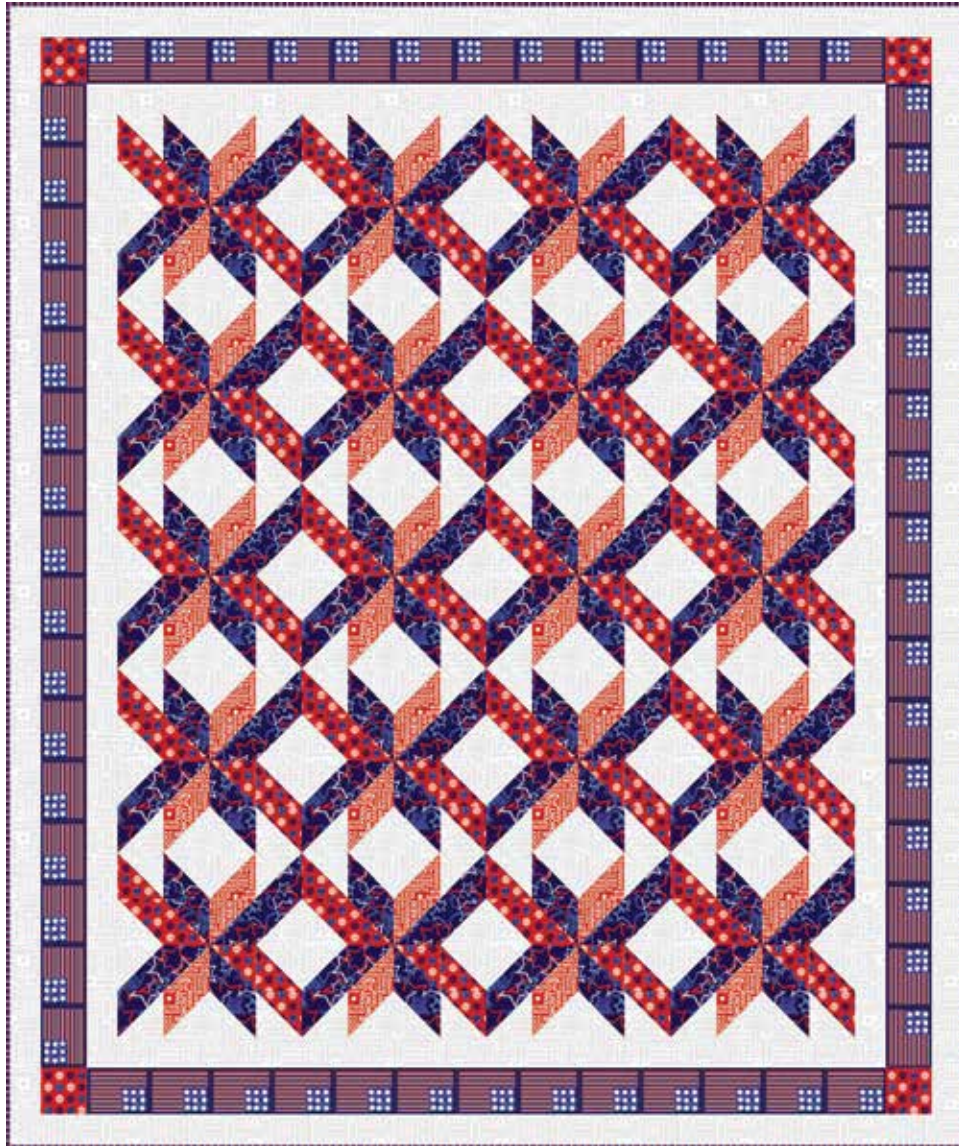


# PATRIOTIC PRIDE

QUILT 2



Featuring fabrics from the **Patriotic Pride** collection from **STUDIO·e·fabrics**

## Fabric Requirements

- (A) 3602-88 ..... ½ yard
- (B) 3597-77 ..... 1 ¼ yards
- (C) 3601-88 ..... 7/8 yard
- (D) 3602-01W ..... 2 ½ yards
- (E) 3598-77 ..... 2 yards
- (F) 3603-77 ..... 5/8 yard\*

- Backing
- 3605-77 ..... 2 yards

\* Includes Binding

## Additional Supplies Needed

- Batting 70" x 82"
- Piecing and sewing thread
- Quilting and sewing supplies

Quilt designed by Heidi Pridemore  
 Finished Quilt Size 62" x 74"  
 Skill Level: Intermediate

## Cutting

### Cutting Instructions

*Please note: All strips are cut across the width of fabric (WOF) from selvage to selvage edge unless otherwise noted.*

WOF= Width of Fabric • LOF = Length of Fabric

#### **Fabric A (3602-88 State Names – Red), cut:**

- (4) 3 7/8" x WOF strips, sub-cut (40) 3 7/8" squares.

#### **Fabric B (3597-77 Stars – Navy), cut:**

- (10) 3 7/8" x WOF strips, sub-cut (100) 3 7/8" squares.

#### **Fabric C (3601-88 Dot – Red), cut:**

- (6) 3 7/8" x WOF strips, sub-cut (60) 3 7/8" squares.
- (1) 3 1/2" x WOF strip, sub-cut (4) 3 1/2" squares.

#### **Fabric D (3602-01W State Names – Pigment White), cut:**

- (12) 3 7/8" x WOF strips, sub-cut (120) 3 7/8" squares.
- (4) 2 1/2" x WOF strips. Sew the strips together end to end with diagonal seams and cut (2) 2 1/2" x 60 1/2" strips.
- (3) 2 1/2" x WOF strips. Sew the strips together end to end with diagonal seams and cut (2) 2 1/2" x 52 1/2" strips.
- (4) 2 1/2" x WOF strips. Sew the strips together end to end with diagonal seams and cut (2) 2 1/2" x 70 1/2" strips.
- (4) 2 1/2" x WOF strips. Sew the strips together end to end with diagonal seams and cut (2) 2 1/2" x 62 1/2" strips.

#### **Fabric E (3598-77 Flag – Navy), cut:**

- (2) 3 1/2" x 64 1/2" LOF strips.
- (2) 3 1/2" x 52 1/2" LOF strips.

#### **Fabric F (3603-77 Pin-head Stripe – Navy), cut:**

- (7) 2 1/2" x WOF strips for the binding.

#### **Backing (3605-77 American Swirl 108" – Navy), cut:**

- (1) 70" x 82" strip for the back.

## Sewing

Sew using a  $\frac{1}{4}$ " seam allowance with right sides together (RST) unless otherwise indicated. Always press towards the darker fabric while assembling, unless otherwise noted by the arrows.

### Block Assembly

1. Place (1)  $3\frac{7}{8}$ " Fabric D square on top of (1)  $3\frac{7}{8}$ " Fabric A square, right sides together. Draw a line across the diagonal of the top square (Fig. 1). Sew  $\frac{1}{4}$ " away from each side of the drawn diagonal line (Fig. 2). Cut the (2) squares apart on the drawn diagonal line (Fig. 2) to make (2) AD units (Fig. 3). Trim the AD units to measure  $3\frac{1}{2}$ " square. Repeat to make (40) AD units total.

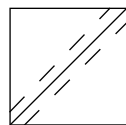


Fig. 1

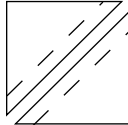


Fig. 2

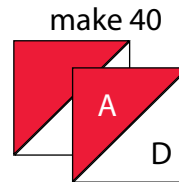


Fig. 3

2. Repeat Step 1 using (60)  $3\frac{7}{8}$ " Fabric B squares and (60)  $3\frac{7}{8}$ " Fabric D squares to make (120)  $3\frac{1}{2}$ " BD units (Fig. 4).

3. Repeat Step 1 using (40)  $3\frac{7}{8}$ " Fabric C squares and (40)  $3\frac{7}{8}$ " Fabric D squares to make (80)  $3\frac{1}{2}$ " CD units (Fig. 5).

4. Repeat Step 1 using (20)  $3\frac{7}{8}$ " Fabric A squares and (20)  $3\frac{7}{8}$ " Fabric B squares to make (40)  $3\frac{1}{2}$ " AB units (Fig. 6).

5. Repeat Step 1 using (20)  $3\frac{7}{8}$ " Fabric C squares and (20)  $3\frac{7}{8}$ " Fabric B squares to make (40)  $3\frac{1}{2}$ " CB units (Fig. 7).

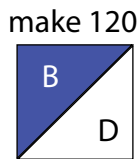


Fig. 4

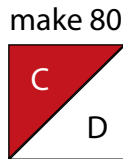


Fig. 5



Fig. 6

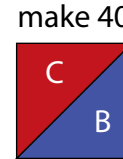


Fig. 7

6. Follow Figure 8 and sew (4) CD units, (6) BD units, (2) AD units, (2) AB units and (2) CB units together to make (1) Block. Repeat to make (20) Blocks total.

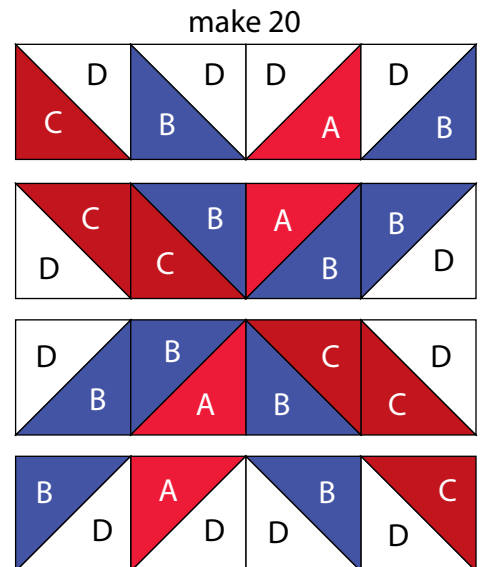


Fig. 8

## Quilt Top Assembly

*(Follow the Quilt Layout while assembling the quilt top.)*

7. Sew (4) Blocks together to make (1) row. Repeat to make (5) rows.

8. Sew the (5) rows together to make the quilt top.

9. Sew (1) 2 ½" x 60 ½" Fabric D strip to each side of the quilt top. Sew (1) 2 ½" x 52 ½" Fabric D strip to the top and to the bottom of the quilt top.

10. Sew (1) 3 ½" x 64 ½" Fabric E LOF strip to each side of the quilt top. Sew (1) 3 ½" Fabric C square to each end of (1) 3 ½" x 52 ½" Fabric E LOF strip. Repeat to make a second strip. Sew the strips to the top and to the bottom of the quilt top.

11. Sew (1) 2 ½" x 70 ½" Fabric D strip to each side of the quilt top. Sew (1) 2 ½" x 62 ½" Fabric D strip to the top and to the bottom of the quilt top.

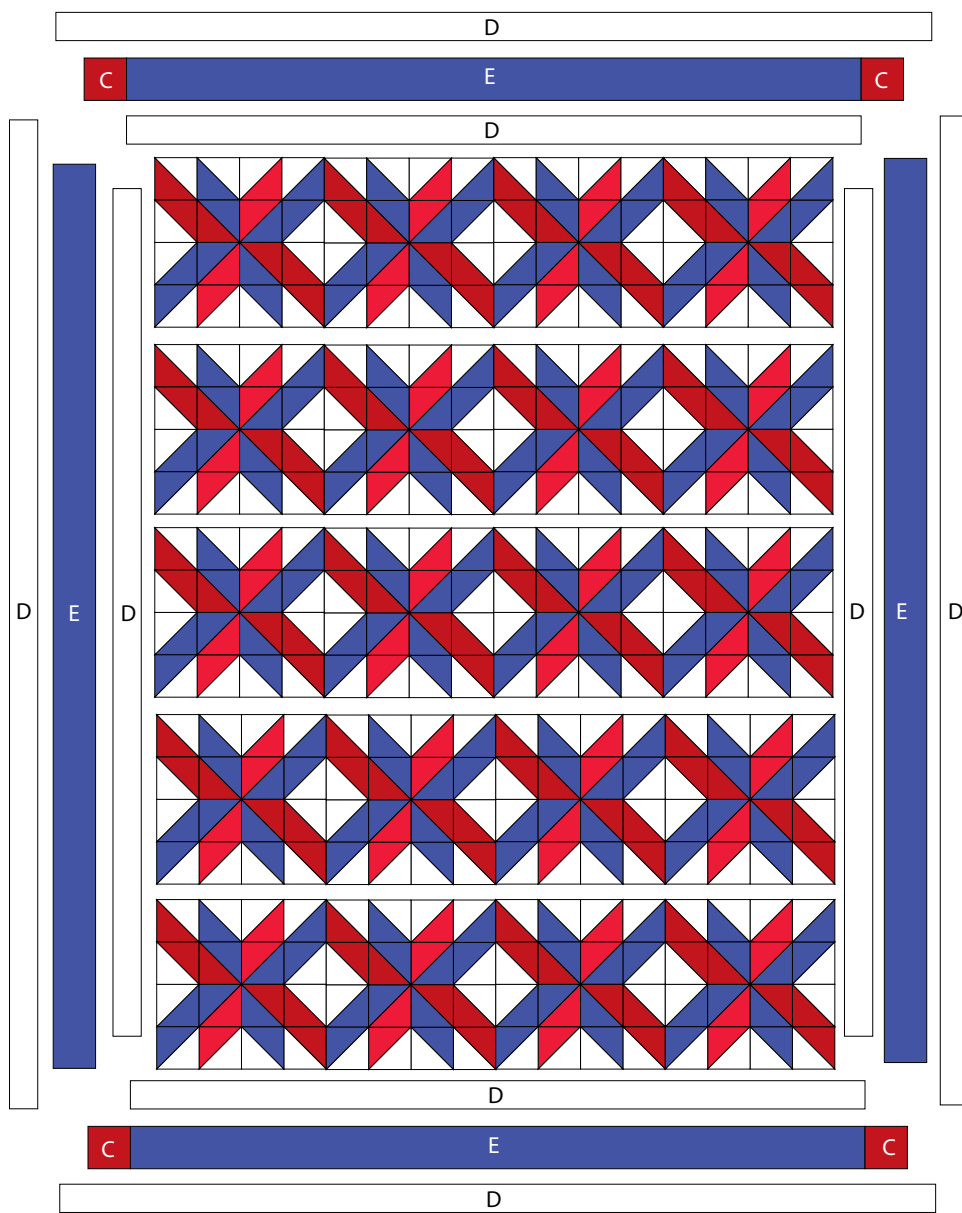
## Layering, Quilting and Finishing

12. Press the quilt top and 70" x 82" backing well. Layer backing (wrong side up), batting, pressed quilt top (right side up) and baste. Quilt as desired and trim excess batting and backing when quilting is complete.

## Binding

13. Cut the ends of the (7) Fabric F binding strips at a 45-degree angle and sew end to end to make (1) continuous piece of binding. Fold in half lengthwise and press wrong sides together.

14. Sew the binding to the front of the quilt, raw edges together. Turn the folded edge to the back, and hand stitch in place.



Quilt Layout

*Every effort has been made to ensure that all projects are error free. All the information is presented in good faith, however no warranty can be given nor results guaranteed as we have no control over the execution of instructions. Therefore, we assume no responsibility for the use of this information or damages that may occur as a result. When errors are brought to our attention, we make every effort to correct and post a revision as soon as possible. Please make sure to check [www.studioefabrics.com](http://www.studioefabrics.com) for pattern updates prior to starting the project. We also recommend that you test the project prior to cutting for kits. Finally, all free projects are intended to remain free to you and are not for resale.*