

THIS WAY AND THAT II



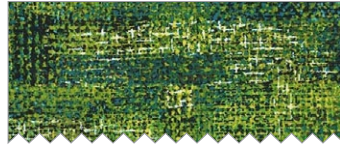
SIZE: 40" X 50" | CONFIDENT BEGINNER | QUILT DESIGNED BY MARINDA STEWART

FABRIC REQUIREMENTS

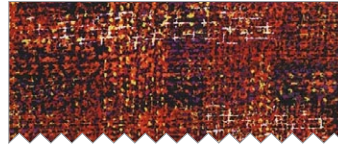
45" X 55" BACKING & BATTING



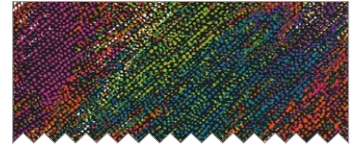
CJ6820 Multi
Cityscape
3/4 yard



CJ6817 Ocean
Pixel Plaid
1/8 yard



CJ6817 Fire
Pixel Plaid
1/8 yard



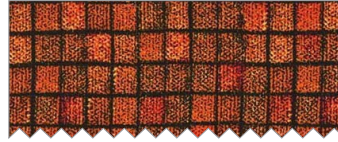
CJ6816 Multi
Pixelism
Fat 1/8



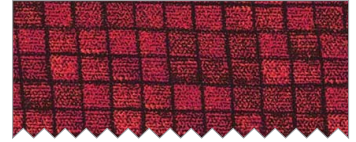
CJ6821 Turquoise
Crossroads
Fat 1/8



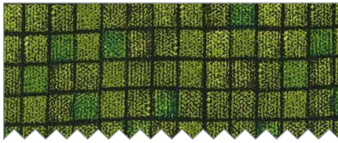
CJ6821 Fuchsia
Crossroads
Fat 1/8



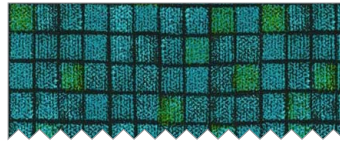
CJ6818 Orange
Textured Tiles
1/8 yard



CJ6818 Fuchsia
Textured Tiles
1/8 yard



CJ6818 Lime
Textured Tiles
1/8 yard



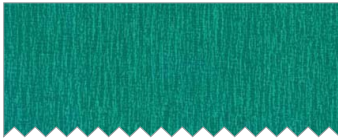
CJ6818 Turquoise
Textured Tiles
1/8 yard



CJ6822 Orange
Blurred Lines
1/4 yard



CJ6822 Fuchsia
Blurred Lines
Fat 1/8



CJ6822 Turquoise
Blurred Lines
1/4 yard



CJ6822 Lime
Blurred Lines
1/4 yard



CJ4816 Primrose
Painter's Canvas
1/8 yard



CJ4816 Orange
Painter's Canvas
Fat 1/8



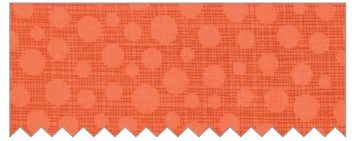
CJ4816 Cream
Painter's Canvas
Fat 1/8



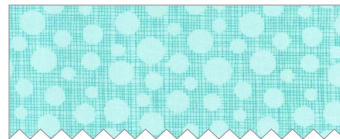
CJ4816 Mustard
Painter's Canvas
Fat 1/4



CJ4816 Lime
Painter's Canvas
1/8 yard



CX6699 Papaya
Hash Dot
1/8 yard



CX6699 Luna
Hash Dot
1/8 yard



CX6699 Marine
Hash Dot
Fat 1/8

This Way and That II

Quilt designed by Marinda Stewart

Size: 40" W x 50" H

Skill Level: Confident Beginner

The pattern for this quilt looks complicated but it's not. A nine-patch looks complicated but it's not. A nine-patch block is cut apart into four equal parts. Each part is converted to a right square triangle unit. Two right square triangles units are sewn together to make the arrowhead block. The chevron band is a continuous half log cabin strip. Make one row at a time.

Fabrics	Yardage	Cutting
CJ6820 Multi Cityscape	3/4 yard	(3) 4 1/2" square (5) 2 1/2" x W.O.F. (2) 2" x 50 1/2" pieced for length
CJ6817 Ocean Pixel Plaid	1/8 yard	(3) 4 1/2" squares 1 1/2" strips *
CJ6817 Fire Pixel Plaid	1/8 yard	(3) 4 1/2" squares 1 1/2" strips *
CJ6816 Multi Pixelism	Fat 1/8	(3) 4 1/2" squares
CJ6821 Turquoise Crossroads	Fat 1/8	(3) 4 1/2" squares
CJ6821 Fuchsia Crossroads	Fat 1/8	(3) 4 1/2" squares
CJ6818 Orange Textured Tiles	1/8 yard	(3) 4 1/2" squares 1 1/2" strips *
CJ6818 Fuchsia Textured Tiles	1/8 yard	(3) 4 1/2" squares 1 1/2" strips *
CJ6818 Lime Textured Tiles	1/8 yard	(3) 4 1/2" squares 1 1/2" strips *
CJ6818 Turquoise Textured Tiles	1/8 yard	(3) 4 1/2" squares (1) 2 1/2" square 1 1/2" strips *
CJ6822 Orange Blurred Lines	1/4 yard	(4) 6 1/4" squares (4) 4 1/2" squares 1 1/2" strips *
CJ6822 Fuchsia Blurred Lines	Fat 1/8	(2) 4 1/2" squares 1 1/2" strips *
CJ6822 Turquoise Blurred Lines	1/4 yard	(4) 6 1/4" squares (4) 4 1/2" squares 1 1/2" strips *
CJ6822 Lime Blurred Lines	1/4 yard	(4) 6 1/4" squares (3) 4 1/2" squares 1 1/2" strips *
CJ4816 Primrose	1/8 yard	(6) 4 1/2" squares

Painter's Canvas		1 ½" strips *
CJ4816 Orange Painter's Canvas	Fat 1/8	(3) 4 ½" squares 1 ½" strips *
CJ4816 Cream Painter's Canvas	Fat 1/8	(3) 4 ½" squares 1 ½" strips *
CJ4816 Mustard Painter's Canvas	Fat 1/4	(4) 6 ¼" squares 1 ½" strips *
CJ4816 Lime Painter's Canvas	1/8 yard	(5) 4 ½" squares 1 ½" strips *
CX6699 Papaya Hash Dot	1/8 yard	(4) 4 ½" squares 1 ½" strips *
CX6699 Luna Hash Dot	1/8 yard	(4) 4 ½" squares 1 ½" strips *
CX6699 Marine Hash Dot	Fat 1/8	(2) 4 ½" squares 1 ½" strips *
CX6699 Pistachio Hash Dot	Fat 1/8	(3) 4 ½" squares 1 ½" strips *
CX6699 Kryptonite Hash Dot	Fat 1/8	(2) 4 ½" squares 1 ½" strips *
CX6699 Magenta Hash Dot	1/4 yard	(4) 6 ¼" squares 1 ½" strips *

Also Needed: 45" x 55" backing, 45" x 55" batting, thread to match, scissors, straight pins, rotary cutter, acrylic ruler, mat, 8 1/2" W x 52" L piece of foundation fabric or tear-away stabilizer (not iron-on) for the chevron band.

* Cut from remaining fabric. Will be used in the chevron band.

Directions:

1. Refer to the construction diagrams for the color placement for the nine-patch blocks. Make one 9-patch block for each color 12 ½" square and (1) partial block – 8 ½" x 12 ½" each color as shown in the diagram.
2. Cut a 9-patch block into four equal pieces each 6 ¼" square (figure 2). Cut the 8 ½" x 12 ½" piece into two equal 6 ¼" squares.
3. For the right square triangle unit – place one 6 ¼" square right sides together on top of the pieced 6 ¼" square. Draw a diagonal line through the large and small corner squares as shown in the construction diagram (figure 4). Sew ¼" on each side of the diagonal line. Cut apart on the diagonal line. Press open. Yield will be (2) right square triangle units. Trim each to an accurate 5 ½" square. Make (12) right square triangles from each color combination.
4. Sew (2) right square triangle blocks together to make (1) 5 ½" x 10 ½" arrowhead block. Make (6) blocks total for each color as shown. Sew (4) blocks together and (2) blocks together of each color.

5. Sew the (4) block strips together to make (1) 20 ½" W x 50 ½" H strip. Sew the (2) block strips together to make (1) 10 ½" W x 50 ½" H strip. Set aside.
6. For the chevron band – fold foundation strip in half vertically. Mark the center line (with a pencil or by pressing it with an iron). Following the diagram on the construction page – place a CJ6818 Turquoise 2 ½" square at the bottom of the foundation fabric right side up. Place a Turquoise 1 ½" strip, right sides together on top of one edge of the square. Sew a ¼" seam. Flip the strip to the right side. Press. Place a matching strip on the other side of the square. Sew. Flip. Press. Use the center line to keep the chevron band centered and even. Refer to the photo for placement of the color or place them as desired. A 'loose' rainbow arrangement was used for this band. Trim finished band to measure 7 ½" W x 50 ½" long. Foundation fabric is left in the quilt.
7. Sew one CJ6820 2" x 50 ½" strip (pieced for length) to each side of the chevron band.
8. Sew the 20 ½" x 50 ½" arrowhead strip to the left side of the chevron band and the 10 ½" x 50 ½" strip to the right side of the band to make 40 ½" W x 50 ½" L top.
9. Layer backing, batting, and quilt top. Baste.
10. Quilt as desired.
11. Bind quilt using CJ6820 2 ½" strips pieced as needed for length.

Color Combinations for each Row

Pink - Row #1

partial block

CS 6821 pink	CS 6822 orange	CJ 6818 pink
CJ 4816 primrose	CJ 6822 pink	CJ 4816 primrose
CS 6818 pink	CS 6822 orange	CS 6821 pink

Right triangle = CS 6699 pink

Green - Row #2

CS 6818 green	CJ 6818 turq.	CJ 6817 green
CS 6699 green	CJ 4816 lime	CS 6699 green
CS 6817 green	CS 6818 turq.	CS 6818 green

CS 6822 - green

Gold - Row #3

CS 6816 multi	CJ 4816 lime	CS 6820 multi
CJ 4818 cream	CS 6699 kiwi	CJ 4818 cream
CS 6820 multi	CJ 4816 lime	CS 6816 multi

CJ 4818 - mustard

Orange - Row #4

CS 6817 orange	CS 6699 orange	CS 6818 orange
CJ 4816 primrose	CJ 4816 orange	CJ 4816 primrose
CS 6818 orange	CS 6699 orange	CS 6817 orange

CS 6822 - orange

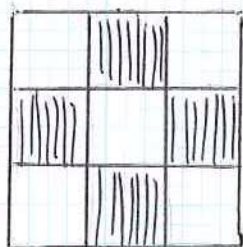
Turquoise - Row #5

CS 6821 turq.	CS 6699 aqua	CS 6818 turq.
CS 6822 green	CJ 4816 turq.	CS 6822 green
CS 6818 turq.	CS 6699 aqua	CS 6821 turq.

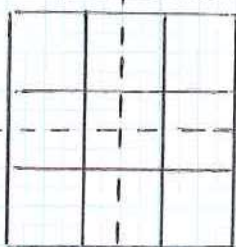
CS 6822 - turquoise

"This Way and That II"
Quilt

Block Construction Steps



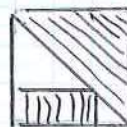
1) 9-patch block = 12 1/2" square



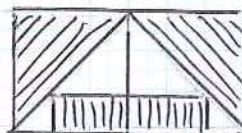
2) cutting lines = (4) 6 1/4" blocks



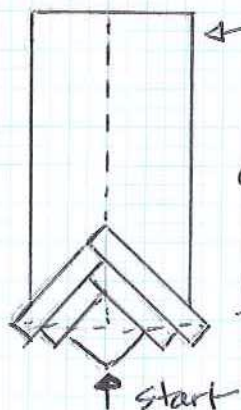
3) new unit 6 1/4"



4) finished unit trimmed to 5 1/2" square



5) Finished double unit 5 1/2" x 10 1/2"



← foundation fabric or stabilizer

Chevron Band Construction

start at the bottom and work to the top in a 1/2 log cabin pattern
Trim to measure 7 1/2" w x 50 1/2" L