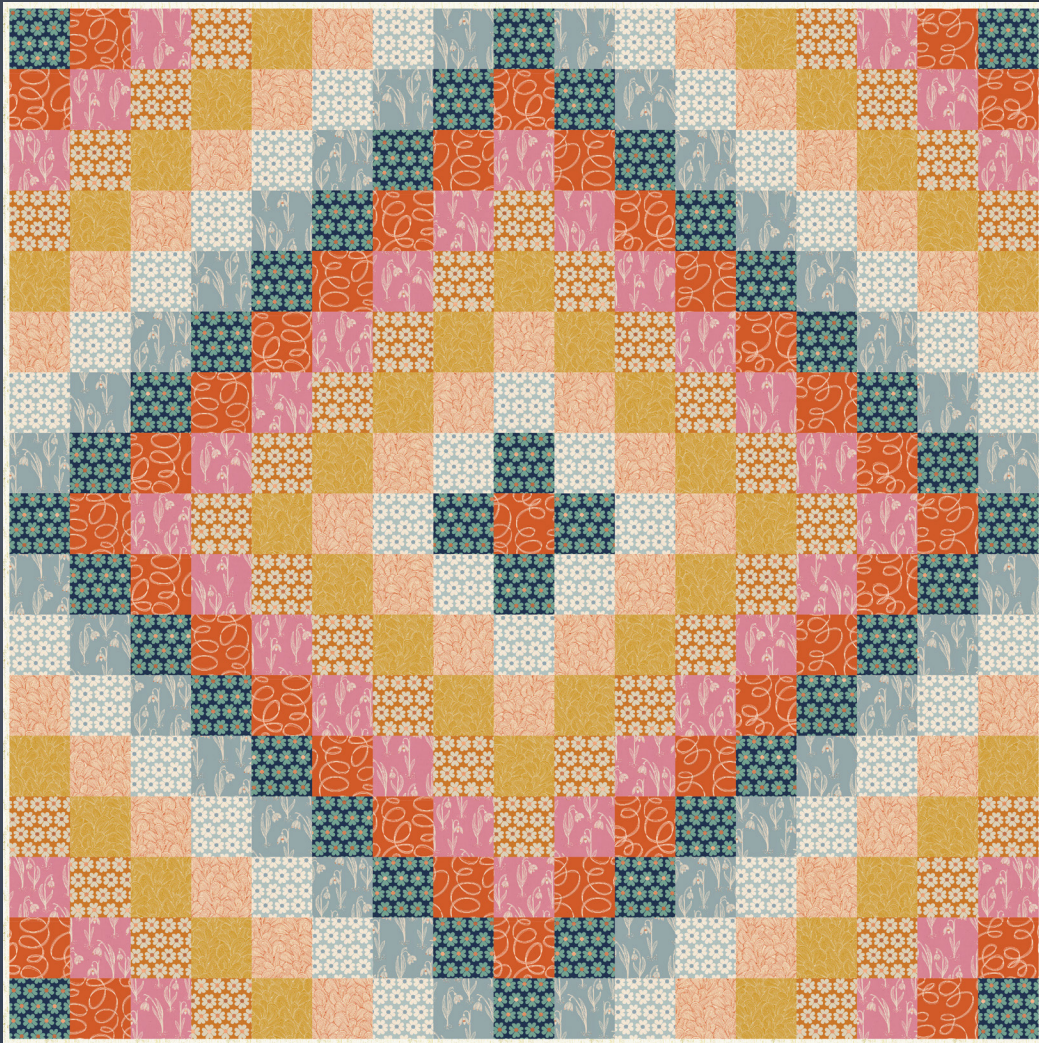


★ OFFICIAL ★
RUBY STAR
SOCIETY
PATTERN CO.

BULLSEYE QUILT

project sheet



FABRIC BY JEN HEWETT

PSRS6009

CUTTING INSTRUCTIONS

From fabrics below, cut **(4) 4½" WOF strips**. Subcut each into **(9) 4½" squares**. (36 total)



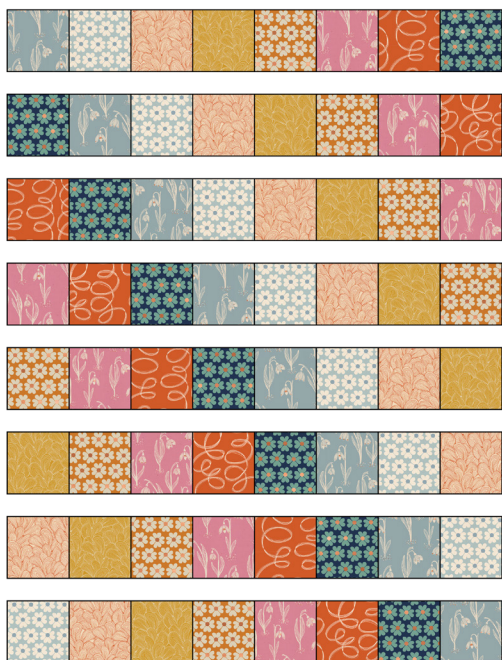
From fabrics below, cut **(5) 4½" WOF strips**. Subcut each into **4½" squares** until you have the quantity indicated.



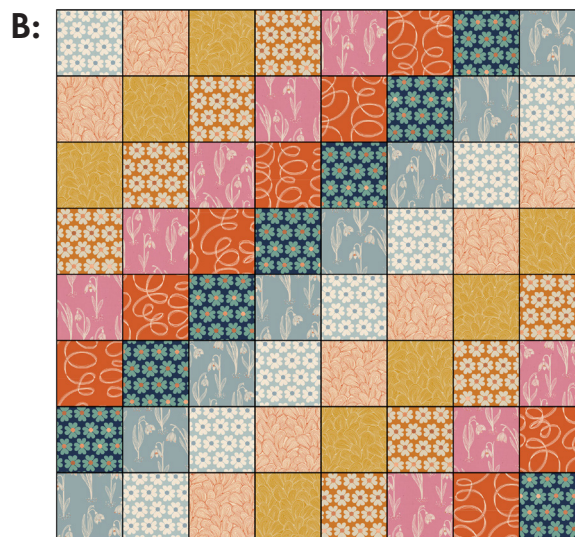
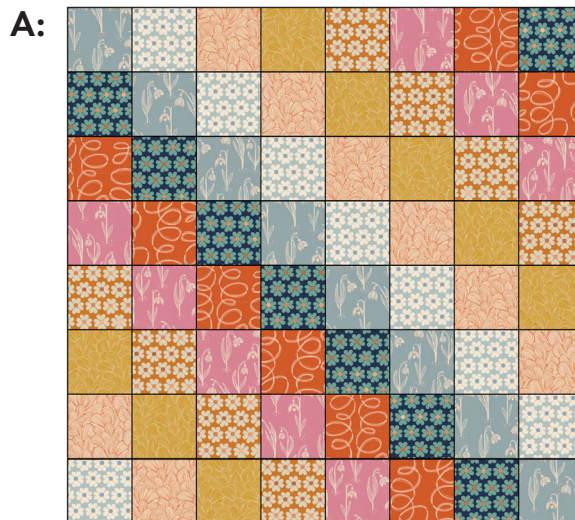
PIECING INSTRUCTIONS

The Bullseye Quilt is made up of four large blocks, four joining strips and one center square. First we will make the four large blocks.

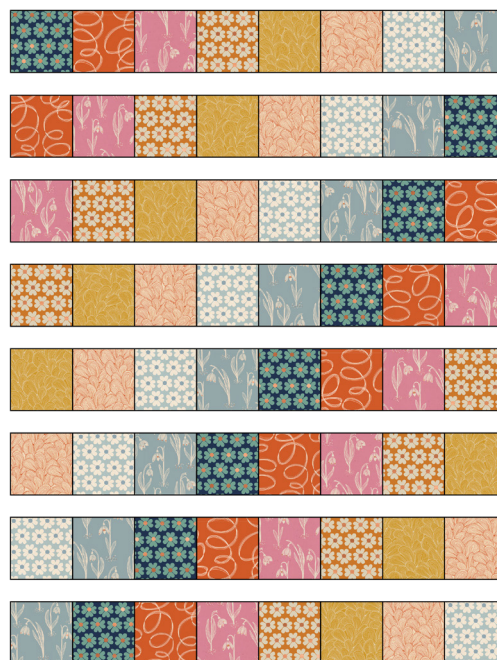
Paying attention to directional prints, piece **(2) each** of the 8 rows pictured below. Each row contains 8 squares. Press all seams open.



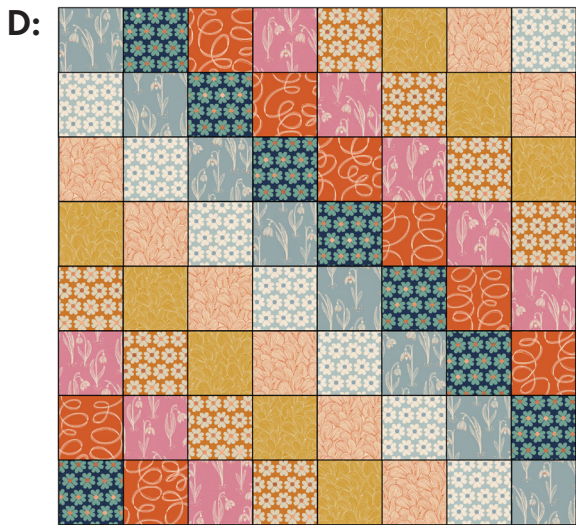
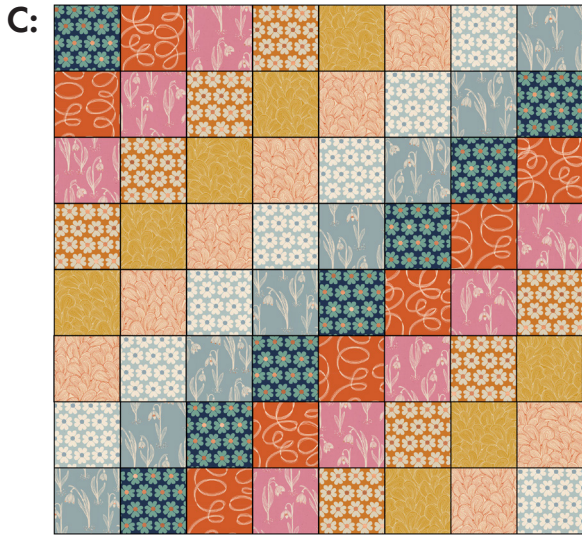
Use rows to piece the 2 blocks below, **A & B**. You will use one set of 8 rows for each block. Press seams open.



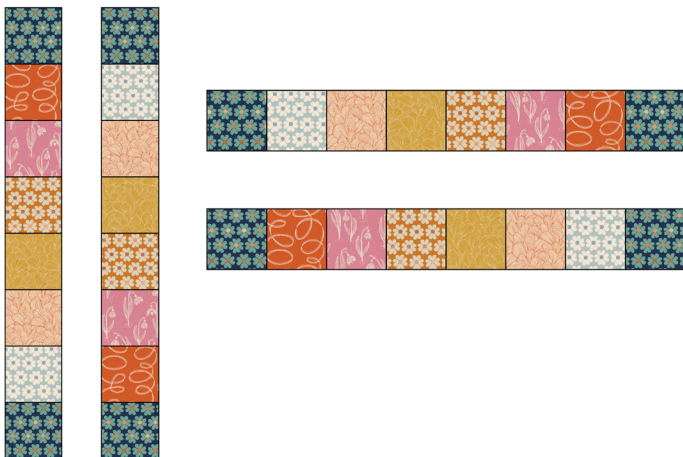
Paying attention to directional prints, piece **(2) each** of the 8 rows pictured below. Press all seams open.



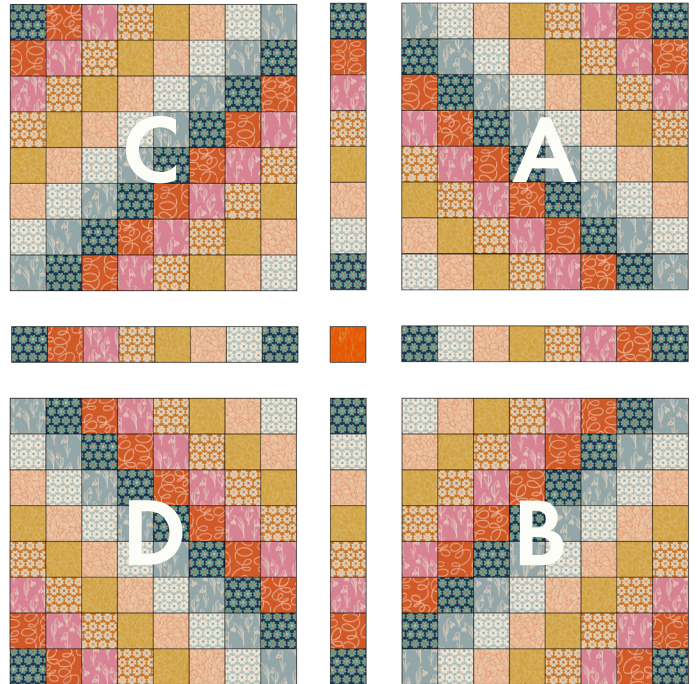
Use rows to piece the 2 blocks below, **C** & **D**. You will use one set of 8 rows for each block. Press seams open.



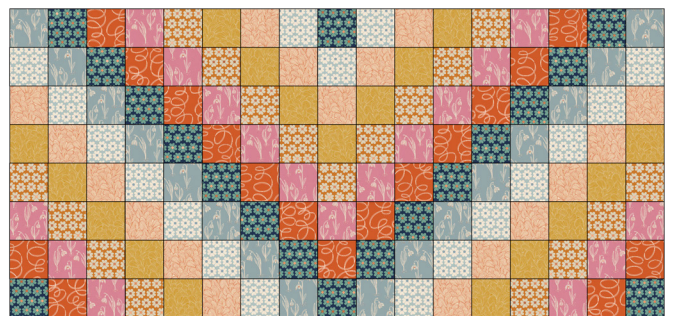
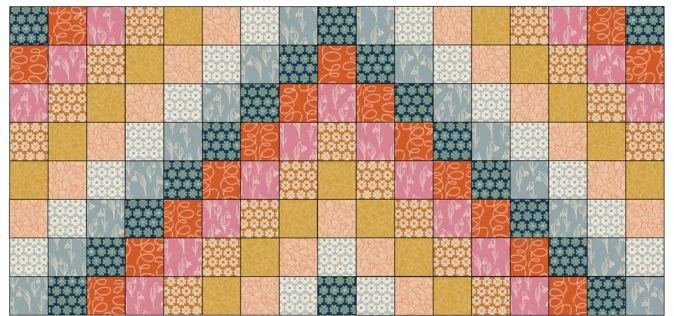
Piece the four joining strips shown below. Each contains 8 squares. Keep in mind that, print-direction-wise, two are pieced as vertical columns and two are pieced as horizontal rows. Press seams open.



Below is an overview of how all the pieces go together to create the quilt top.



First, join blocks, strips and/or center square together into rows as shown. Press seams open.



Then join rows to finish quilt top. Press seams open. Baste, quilt and bind as desired. Binding yardage is for 2½" crossgrain binding.

YOU DID IT! YOU MADE A BULLSEYE QUILT!!

Be sure to use #rubystarsociety when sharing your creations so we can see them!

BULLSEYE QUILT

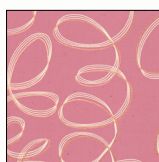
The undulating shades of fabric in this trip-around-the-world-inspired quilt lead your eye right to the center. Bullseye!

Fabrics are from Unruly Nature by Jen Hewett for Ruby Star Society. Quilt designed by Kimberly Kight.



68" x 68"

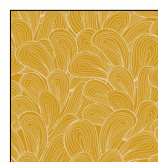
FABRIC REQUIREMENTS



RS6015-15M
5/8 yd



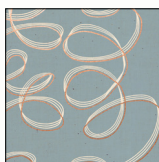
RS6011-12M
5/8 yd



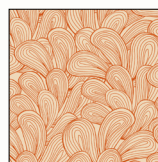
RS6013-16
5/8 yd



RS6011-19
5/8 yd



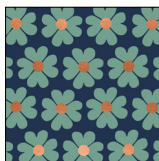
RS6015-21M
5/8 yd



RS6013-14
5/8 yd



RS6015-14M
3/4 yd



RS6011-18M
3/4 yd

BINDING: 1/2 yd

BACKING: 4 1/4 yd

BATTING: at least 74" x 74"

★ RUBY STAR
SOCIETY ★

moda
FABRICS + SUPPLIES

PSRS6009



Copyright 2021 Ruby Star Society. Copying or otherwise redistributing is strictly prohibited. For personal use only.