

★ OFFICIAL ★
**RUBY STAR
SOCIETY**
PATTERN CO.

CHARMING PLAID QUILT

project sheet

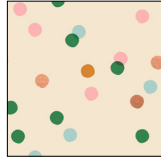


FABRIC BY MELODY MILLER

PS RS0029

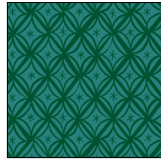
CUTTING INSTRUCTIONS

Cut quantities indicated from each fabric below.



RS0010-31 M

Cut (5) 5" WOF strips.
Subcut (36) 5" squares.



RS0034-17

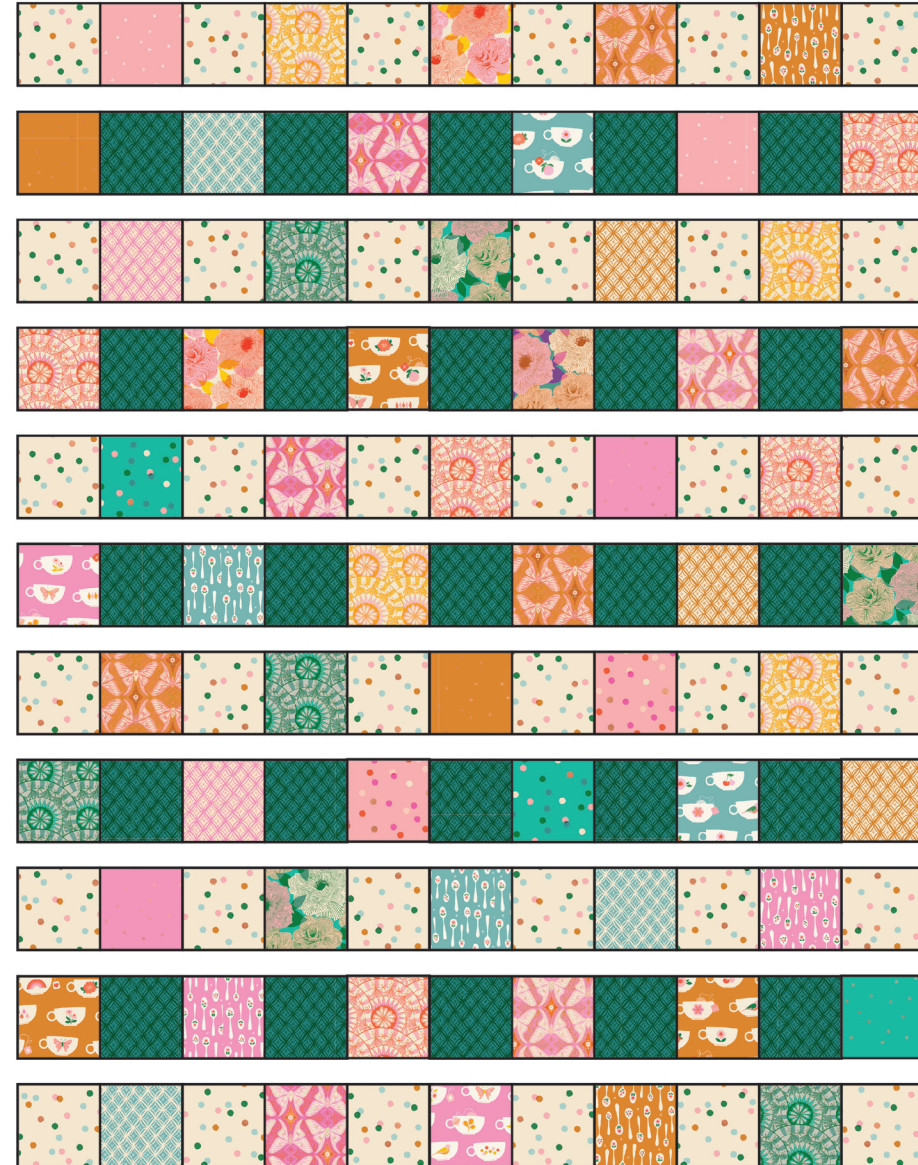
Cut (4) 5" WOF strips.
Subcut (25) 5" squares.

PIECING INSTRUCTIONS

The Charming Plaid quilt is made up of 11 rows of 11 squares each.

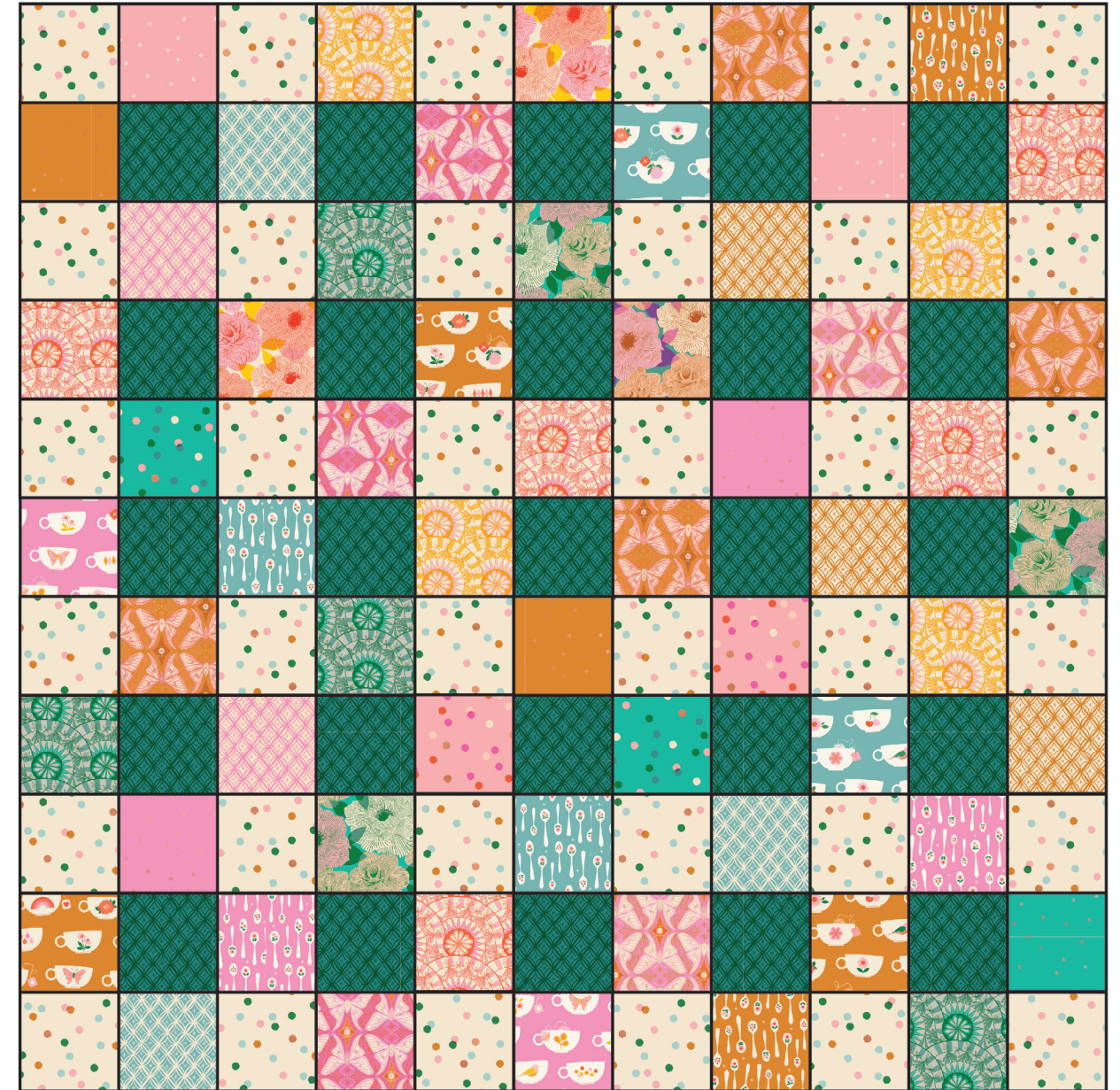
Following diagram below, piece one of each row, using the squares you cut and the two charm packs.

Press seams of each row in opposite directions. Ex: press the first row seams to the left, second row seams to the right, third to the left, etc.



Piece all rows together following diagram below, nesting seam allowances to align seams. Press seams (it doesn't matter which direction).

Baste, quilt and bind as desired. Binding yardage is for 2½" crossgrain binding.



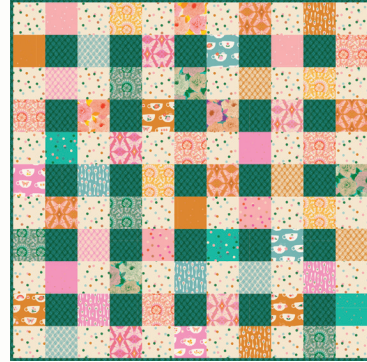
YOU DID IT! YOU MADE A CHARMING PLAID QUILT!!

Be sure to use #rubystarsociety when sharing your creations so we can see them!

CHARMING PLAID QUILT

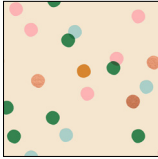
This sweet and simple quilt comes together in a snap with two Camellia charm packs and a little bit of yardage.

Fabrics are from Camellia by Melody Miller for Ruby Star Society.



49" x 49"

FABRIC REQUIREMENTS



RS0010-31M
3/4 yd



RS0029-PP
2 Camellia Charm Packs



RS0034-17
5/8 yd

BINDING: 3/8 yd

BACKING: 3 1/4 yd

BATTING: at least 55" x 55"

★ RUBY STAR
SOCIETY ★

moda
FABRICS + SUPPLIES

PSRS0029

