

TIMELESS
TREASURES

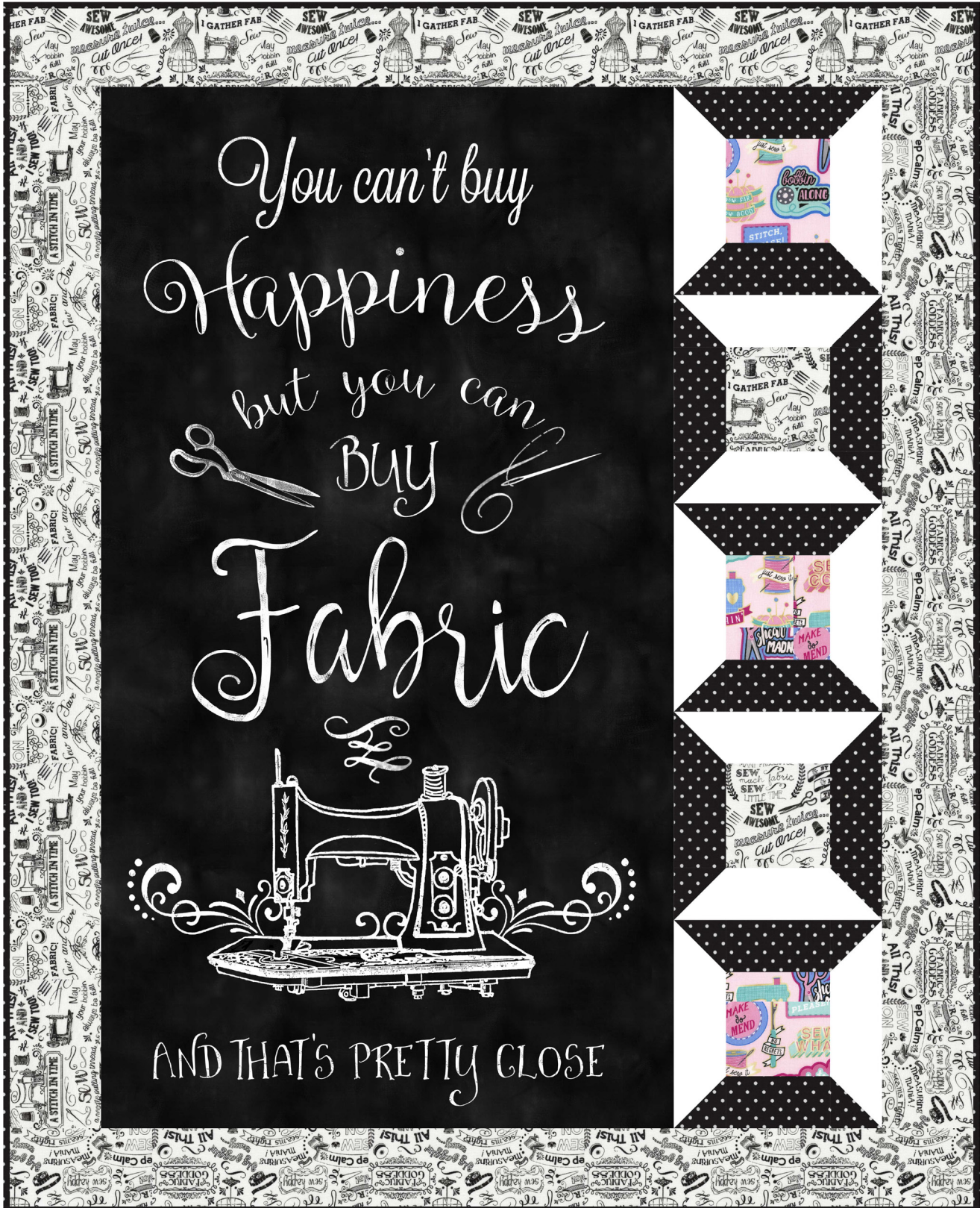
BROOME STREET PATTERNS



Can't Buy Happiness

Happy Stitches

Designed by Denniele Bohannon



Finished quilt size: 37½" x 46½"

Fabric Requirements

1 panel ($\frac{2}{3}$ yard) PanelGC-C7253 Black
 $\frac{1}{3}$ yard Soho-White
 $\frac{2}{3}$ yard Dot-C1820 Black (includes $\frac{3}{8}$ yard for binding)
 $\frac{5}{8}$ yard Gail-C3417 White
 $\frac{1}{4}$ yard Fun-C6321 Pink
 $2\frac{5}{8}$ yards backing fabric of choice
45" x 54" batting

Cutting

From PanelGC-C7253 Black:

- Trim panel to $22\frac{1}{2}$ " x $40\frac{1}{2}$ ".

From Soho-White:

- Cut one $4\frac{1}{2}$ " x width-of-fabric (WOF) strip. Sub-cut ten $2\frac{1}{2}$ " x $4\frac{1}{2}$ " rectangles.
- Cut one $3\frac{3}{8}$ " x WOF strip. Sub-cut ten $3\frac{3}{8}$ " squares.

From Dot-C1820 Black:

- Cut one $4\frac{1}{2}$ " x width-of-fabric (WOF) strip. Sub-cut ten $2\frac{1}{2}$ " x $4\frac{1}{2}$ " rectangles.
- Cut one $3\frac{3}{8}$ " x WOF strip. Sub-cut ten $3\frac{3}{8}$ " squares.
- Cut five $2\frac{1}{2}$ " x WOF binding strips.

From Gail-C3417 White:

- Cut two 4" x WOF strips. Sub-cut two 4" x $40\frac{1}{2}$ " strips.
- Cut two $3\frac{1}{2}$ " x WOF strips. Sub-cut two $3\frac{1}{2}$ " x $37\frac{1}{2}$ " strips.
- Cut one $4\frac{1}{2}$ " x WOF strip. Sub-cut two $4\frac{1}{2}$ " squares.

From Fun-C6321 Pink:

- Cut one $4\frac{1}{2}$ " x WOF strip. Sub-cut three $4\frac{1}{2}$ " squares.

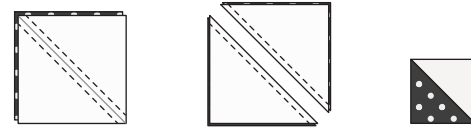
Block Construction

All seam allowances are $\frac{1}{4}$ " and pieces are sewn right sides together.

- Draw a diagonal line on the back of each $3\frac{3}{8}$ " Soho-White square. Match a $3\frac{3}{8}$ " White square and $3\frac{3}{8}$ " C1820 Black square right sides together.

- Stitch $\frac{1}{4}$ " on each side of the drawn line (figure 1). Cut apart on the marked line. Press open and trim to $2\frac{1}{2}$ " square. Make a total of twenty half-square triangle units (HST).

Fig. 1



HST
Make 20.

- Following Figure 2 for orientation, stitch one HST to each end of a $2\frac{1}{2}$ " x $4\frac{1}{2}$ " C1820 Black rectangle. Make a total of six top/bottom rows.

Fig. 2



Top/Bottom Row
Make 6.

- Following Figure 3, stitch one HST to each end of a $2\frac{1}{2}$ " x $4\frac{1}{2}$ " Soho-White rectangle. Make a total of four top/bottom rows.

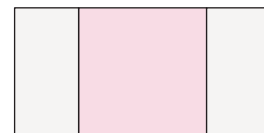
Fig. 3



Top/Bottom Row
Make 4.

- Stitch a $2\frac{1}{2}$ " x $4\frac{1}{2}$ " Soho-White rectangle to each long edge of a $4\frac{1}{2}$ " C6321 Pink square (figure 4). Make a total of three center rows.

Fig. 4



Pink Center Row
Make 3.



6. Stitch a 2½" x 4½" C1820 Black rectangle to each long edge of a 4½" C3417 White square (*figure 5*). Make a total of two center rows.

Fig. 5

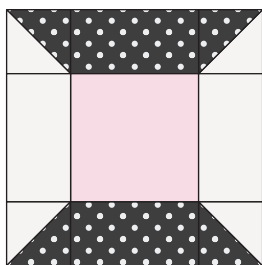


White Center Row

Make 2.

7. Lay out the rows as shown (*figure 6*), stitch the rows together in order, matching adjacent seams. Make a total of three pink spool blocks.

Fig. 6

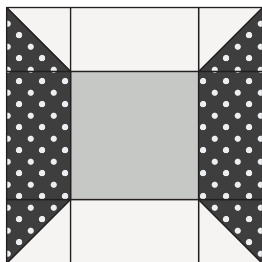


Pink Spool Block

Make 3.

8. Lay out the rows as shown (*figure 7*), stitch the rows together in order, matching adjacent seams. Make two white spool blocks.

Fig. 7



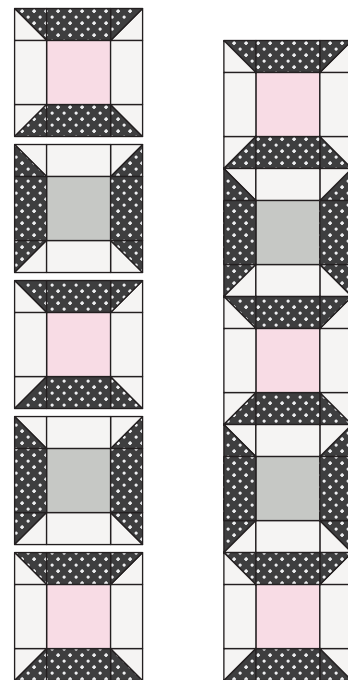
White Spool Block

Make 2.

Quilt Top Assembly

9. Following Figure 8 and noting the orientation of the directional prints, alternately lay out the five spool blocks. Matching adjacent seams, stitch the blocks together to make a side border.

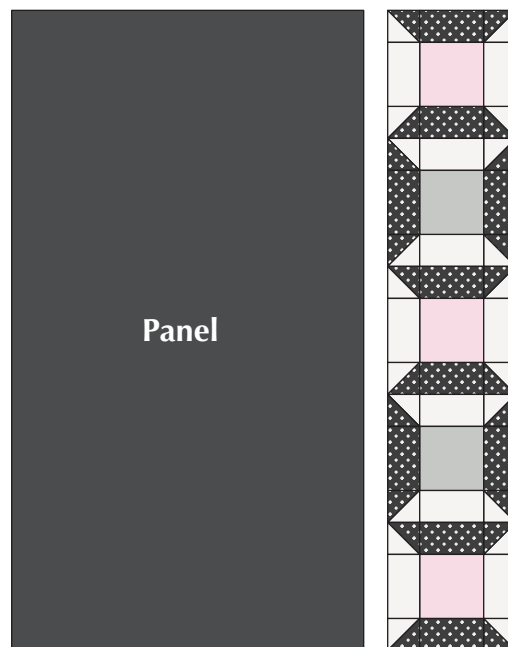
Fig. 8



Side Border

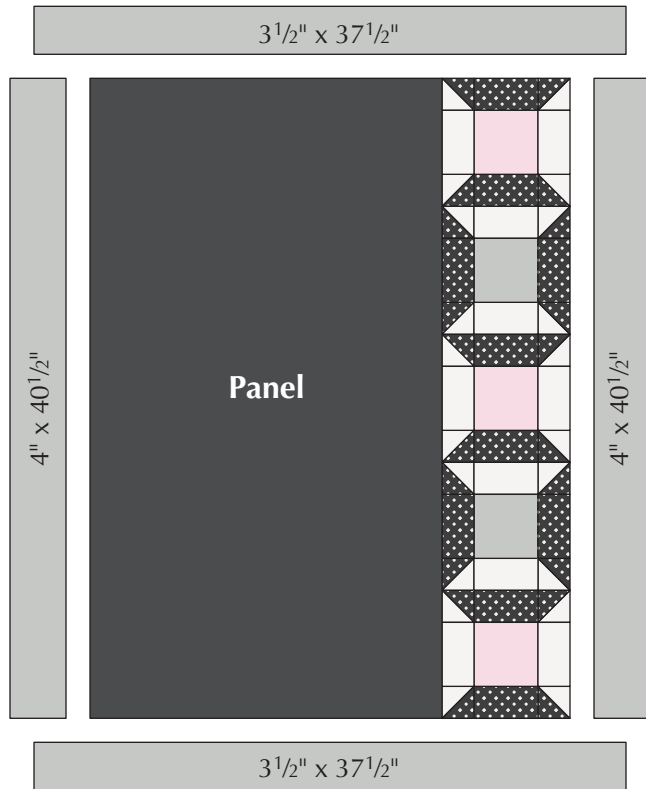
10. Noting the orientation, stitch the side border to the right side of the C7253 Black panel (*figure 9*).

Fig. 9



11. Stitch a $4" \times 40\frac{1}{2}"$ C3417 White strip to each side of the quilt center.
12. Stitch one $3\frac{1}{2}" \times 37\frac{1}{2}"$ C3417 White strip to the top and another to the bottom of the quilt center (figure 10).

Fig. 10



Finishing

13. Layer the quilt top, batting, and backing, and quilt as desired.
14. Stitch the binding strips together end to end using diagonal seams. Fold and press the resulting long strip in half lengthwise with wrong sides together. Stitch to the quilt front, matching raw edges and mitering the corners.
15. Fold the binding to the quilt underside and hand-stitch the folded edge to the quilt back.

Denniele Bohannon
www.facebook.com/louannamaryquiltdesign/

©2019 Timeless Treasures www.ttfabrics.com
 This pattern is for individual home use only. This pattern may not be reproduced for commercial purposes (i.e., may not be sold).



Imagination... Passion... Creativity