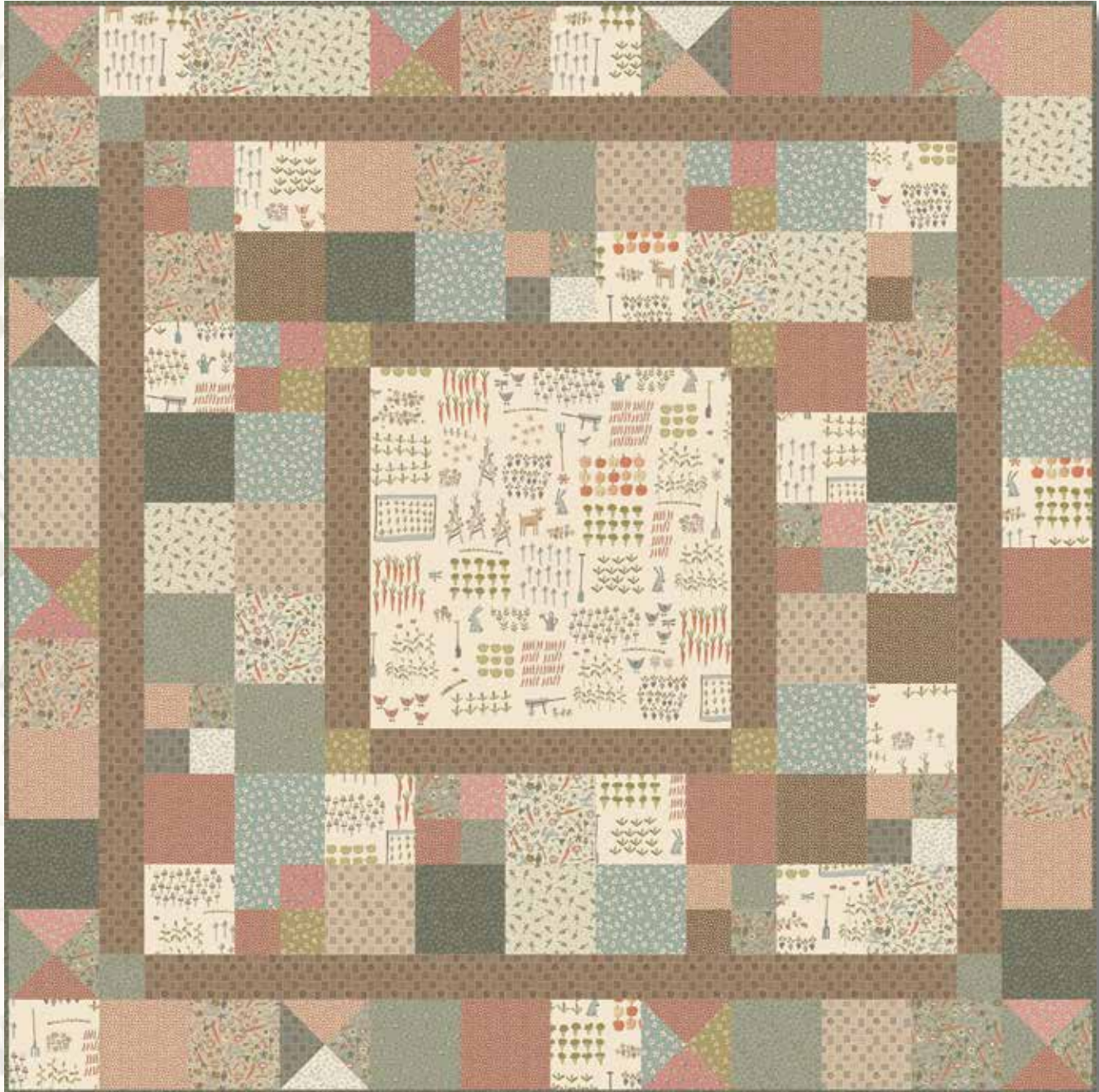


Down by the Veggie Patch



••••• A Free Project Sheet •••••
••••• NOT FOR RESALE •••••

By Anni Downs



Quilt Design by Anni Downs

Quilt 1

Skill Level: Advanced Beginner

 Henry Glass & Co., Inc.



facebook

Finished Quilt Size: 60" x 60"
49 West 37th Street, New York, NY 10018
tel: 212-686-5194 fax: 212-532-3525
Toll Free: 800-294-9495
www.henryglassfabrics.net

DOWN BY THE VEGGIE PATCH Quilt 1

Fabrics in the Collection



Veggie Patch Panel - Cream
2248P-44



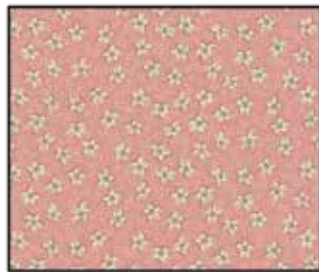
Bunny Toss - Khaki
2249-33



Bunny Toss - Cream
2249-44



Bunny Toss - Blue
2249-76



Large Flower - Pink
2250-22



Large Flower - Green
2250-66



Large Flower - Blue
2250-76



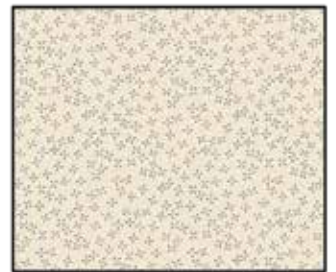
Mushrooms - Pink
2251-22



Mushrooms - Cream
2251-44



Mushrooms - Blue
2251-76



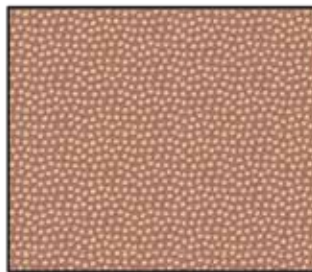
Small Flower - Cream
2252-44



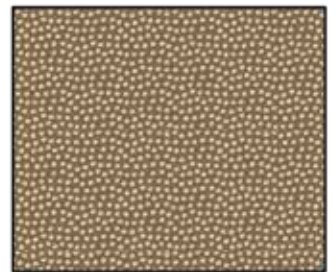
Small Flower - Light Blue
2252-70



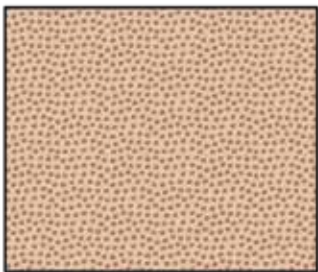
Small Flower - Dark Blue
2252-77



Spots - Cocoa
2253-34



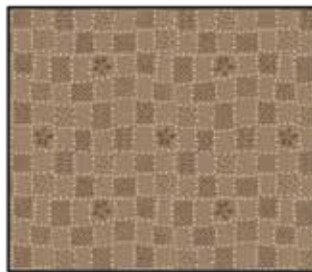
Spots - Brown
2253-38



Spots - Cream
2253-44



Square Patch - Cream
2254-33



Square Patch - Brown
2254-38



Square Patch - Blue
2254-77

DOWN BY THE VEGGIE PATCH

Materials

7/8 yard	Veggie Patch Panel - Cream (A)	2248P-44
7/8 yard	Square Patch - Brown (B)	2254-38
1/4 yard	Large Flower - Green (C)	2250-66
1/3 yard	Small Flower - Light Blue (D)	2252-70
3/8 yard	Spots - Cream (E)	2253-44
3/8 yard	Bunny Toss - Khaki (F)	2249-33
1/4 yard	Mushrooms - Blue (G)	2251-76
1/4 yard	Square Patch - Cream (H)	2254-33
1/2 yard	Large Flower - Blue (I)	2250-76
3/8 yard	Bunny Toss - Blue (J)	2249-76
1/4 yard	Large Flower - Pink (K)	2250-22
1/2 yard	Spots - Cocoa (L)	2253-34
1/4 yard	Spots - Brown (M)	2253-38
1 yard	Small Flower - Dark Blue (N)	2252-77*
1/4 yard	Square Patch - Blue (O)	2254-77
1/4 yard	Small Flower - Cream (P)	2252-44
1/4 yard	Bunny Toss - Cream (Q)	2249-44
1/4 yard	Mushrooms - Cream (R)	2251-44
1/4 yard	Mushrooms - Pink (S)	2251-22
4 yards	Bunny Toss - Blue (Backing)	2249-76

*Includes binding

Cutting Instructions

Please note: all strips are cut across the width of fabric (WOF) from selvage to selvage edge unless otherwise noted.

From the Veggie Patch Panel - Cream (A), cut:

- (1) 20 1/2" WOF square.
- (15) 5 1/2" squares from the remaining fabric.

From the Square Patch - Brown (B), cut:

- (5) 3" x WOF strips. Sew the strips together end to end with diagonal seams and cut (4) 3" x 45 1/2" strips.
- (2) 3" x WOF strips. Sub-cut (4) 3" x 20 1/2" strips.

From the Large Flower - Green (C), cut:

- (1) 6 1/4" x WOF strip. Sub-cut (1) 6 1/4" square and (7) 3" squares. Cut the 6 1/4" square across both diagonals to make (4) triangles.

From the Small Flower - Light Blue (D), cut:

- (1) 5 1/2" x WOF strip. Sub-cut (2) 5 1/2" squares.
- (1) 3" x WOF strip. Sub-cut (7) 3" squares.

From the Spots - Cream (E), cut:

- (1) 3" x WOF strip. Sub-cut (5) 3" squares.
- (1) 6 1/4" x WOF strip. Sub-cut (1) 6 1/4" square and (5) 5 1/2" squares. Cut the 6 1/4" square across both diagonals to make (4) triangles.

From the Bunny Toss - Khaki (F), cut:

- (2) 5 1/2" x WOF strips. Sub-cut (8) 5 1/2" squares.

From the Mushrooms - Blue (G), cut:

- (1) 5 1/2" x WOF strip. Sub-cut (5) 5 1/2" squares and (2) 3" squares.

From the Square Patch - Cream (H), cut:

- (1) 5 1/2" x WOF strip. Sub-cut (6) 5 1/2" squares.

From the Large Flower - Blue (I), cut:

- (2) 5 1/2" x WOF strips. Sub-cut (8) 5 1/2" squares and (3) 3" squares.
- (1) 6 1/4" square. Cut the 6 1/4" square across both diagonals to make (4) triangles.

From the Bunny Toss - Blue (J), cut:

- (1) 3" x WOF strip. Sub-cut (8) 3" squares.
- (1) 6 1/4" x WOF strip. Sub-cut (2) 6 1/4" squares and (1) 5 1/2" square. Cut each 6 1/4" square across both diagonals to make (8) triangles.

From the Large Flower - Pink (K), cut:

- (1) 6 1/4" x WOF strip. Sub-cut (1) 6 1/4" square and (3) 3" squares. Cut the 6 1/4" square across both diagonals to make (4) triangles.

From the Spots - Cocoa (L), cut:

- (1) 5 1/2" x WOF strip. Sub-cut (6) 5 1/2" squares.
- (1) 3" x WOF strip. Sub-cut (6) 3" squares.
- (1) 6 1/4" x WOF strip. Sub-cut (2) 6 1/4" squares. Cut each 6 1/4" square across both diagonals to make (8) triangles.

From the Spots - Brown (M), cut:

- (1) 5 1/2" x WOF strip. Sub-cut (3) 5 1/2" squares and (2) 3" squares.

From the Small Flower - Dark Blue (N), cut:

- (1) 5 1/2" x WOF strip. Sub-cut (7) 5 1/2" squares.
- (1) 6 1/4" square. Cut the 6 1/4" square across both diagonals to make (4) triangles.
- (6) 2 1/2" x WOF strips for the binding.

From the Square Patch - Blue (O), cut:

- (1) 6 1/4" x WOF strip. Sub-cut (1) 6 1/4" square and (3) 3" squares. Cut the 6 1/4" square across both diagonals to make (4) triangles.

From the Small Flower - Cream (P), cut:

- (1) 6 1/4" x WOF strip. Sub-cut (1) 6 1/4" square and (3) 3" squares. Cut the 6 1/4" square across both diagonals to make (4) triangles.

From the Bunny Toss - Cream (Q), cut:

- (1) 5 1/2" x WOF strip. Sub-cut (6) 5 1/2" squares.

From the Mushrooms - Cream (R), cut:

- (1) 5 1/2" x WOF strip. Sub-cut (5) 5 1/2" squares.

DOWN BY THE VEGGIE PATCH

Quilt 1

Cutting Instructions - Continued

Please note: all strips are cut across the width of fabric (WOF) from selvage to selvage edge unless otherwise noted.

From the Mushrooms - Pink (S), cut:

- (1) 6 ¼" x WOF strip. Sub-cut (1) 6 ¼" square and (3) 3" squares. Cut the 6 ¼" square across both diagonals to make (4) triangles.

From the Bunny Toss - Blue (Backing), cut:

- (2) 68" x WOF strips for the backing. Sew the strips together and trim to make the 68" x 68" back.

Sewing Instructions

1. Sew (1) 3" x 20 ½" Fabric B strip to each side of the 20 ½" Fabric A square. Sew (1) 3" Fabric C square to each end of (1) 3" x 20 ½" Fabric B strip. Repeat to make a second strip. Sew the strips to the top and to the bottom of the Fabric A square to make the Center Block (Fig. 1).

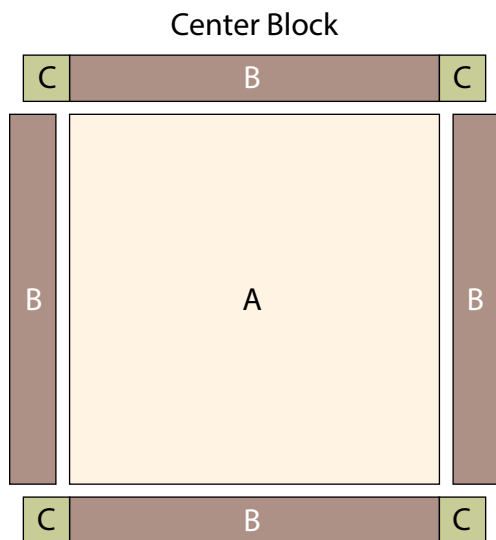


Fig. 1

2. Sew (1) 3" Fabric J square to the left side of (1) 3" Fabric K square to make the top row. Sew (1) 3" Fabric L square to the left side of (1) 3" Fabric D square to make the bottom row. Sew the (2) rows together to make (1) Block One square (Fig. 2). Repeat to make (3) Block One squares total.

Block One
make 3

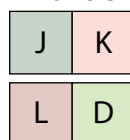


Fig. 2

3. Repeat Step 2 and use Figures 3-5 for fabric identification and location to make (3) Block Two squares, (3) Block Three squares and (2) Block Four squares.

Block Two
make 3

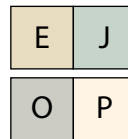


Fig. 3

Block Three
make 3

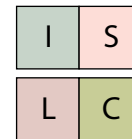


Fig. 4

Block Four
make 2



Fig. 5

4. Sew (1) Fabric N triangle and (1) Fabric K triangle together along the short side. Sew (1) Fabric L triangle and (1) Fabric J triangle together along the short side. Sew the (2) triangles together to make (1) Block Five square (Fig. 6). Repeat to make (4) Block Five squares total.

Block Five
make 4

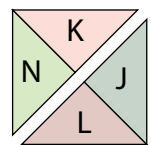


Fig. 6

5. Repeat Step 4 and use Figures 7-8 for fabric identification and location to make (4) Block Six squares and (4) Block Seven squares.

Block Six
make 4

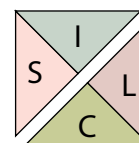


Fig. 7

Block Seven
make 4

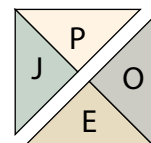


Fig. 8

Quilt Top Assembly

(Refer to the Quilt Layout while assembling.)

6. Sew (1) Block Three square, (1) Block Two square and (8) assorted 5 ½" squares together into 2 x 5 matrix. Sew the new strip to the left side of the Center Block.
7. Sew (1) Block One square and (9) assorted 5 ½" squares together into 2 x 5 matrix. Sew the new strip to the right side of the Center Block.
8. Sew (1) Block One square, (1) Block Two square, (1) Block Three square, (1) Block Four square and (14) assorted 5 ½" squares together into a 2 x 9 matrix. Sew the new strip to the top of the Center Block.
9. Sew (1) Block Three square, (1) Block One square, (1) Block Four square, (1) Block Two square and (14) assorted 5 ½" squares together into a 2 x 9 matrix. Sew the new strip to the bottom of the Center Block.
10. Sew (1) 3" x 45 ½" Fabric B strip to each side of the Center Block. Sew (1) 3" Fabric D square to each end of (1) 3" x 45 ½" Fabric B strip. Repeat to make a second strip. Sew the strips to the top and to the bottom of the Center Block.

DOWN BY THE VEGGIE PATCH

Quilt 1

11. Sew (1) Block Seven square, (1) Block Six square, (1) Block Five square and (7) assorted 5 1/2" squares together. Sew the new strip to the left side of the Center Block.

12. Sew (1) Block Six square, (1) Block Seven square and (8) assorted 5 1/2" squares together. Sew the new strip to the right side of the Center Block.

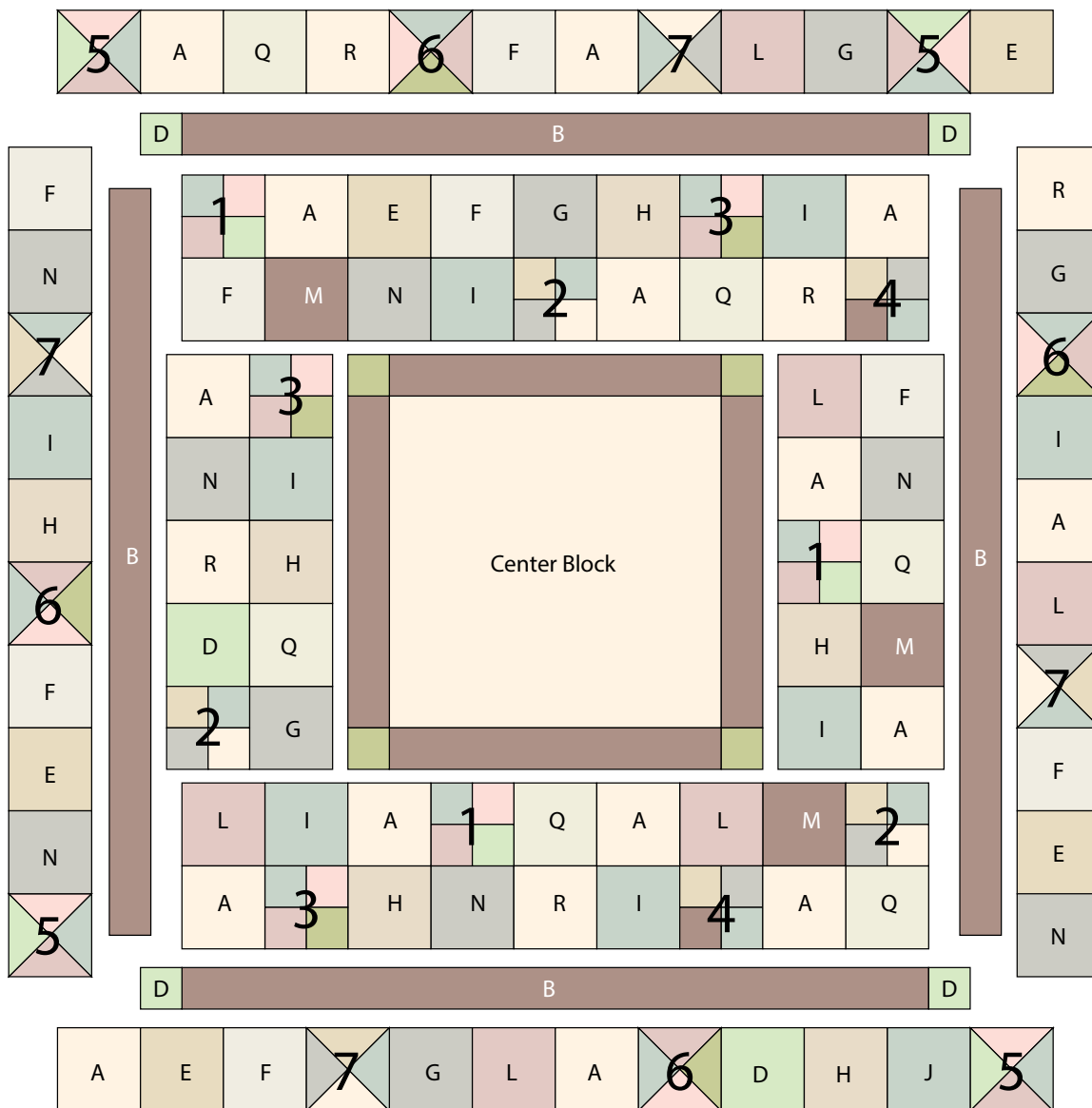
13. Sew (2) Block Five squares, (1) Block Six square, (1) Block Seven square and (8) assorted 5 1/2" squares together. Sew the new strip to the top of the Center Block.

14. Sew (1) Block Seven square, (1) Block Six square, (1) Block Five square and (9) assorted 5 1/2" squares together. Sew the new strip to the bottom of the Center Block to make the quilt top.

15. Layer and quilt as desired.

16. Sew the (6) 2 1/2" x WOF Fabric N strips together, end to end with 45-degree seams, to make the binding. Fold this long strip in half lengthwise with wrong sides together and press.

17. Bind as desired.



Quilt Layout

Every effort has been made to ensure that all projects are error free. All the information is presented in good faith, however no warranty can be given nor results guaranteed as we have no control over the execution of instructions. Therefore, we assume no responsibility for the use of this information or damages that may occur as a result. When errors are brought to our attention, we make every effort to correct and post a revision as soon as possible. Please make sure to check www.henryglassfabrics.net for pattern updates prior to starting the project. We also recommend that you test the project prior to cutting for kits. Finally, all free projects are intended to remain free to you and are not for resale.