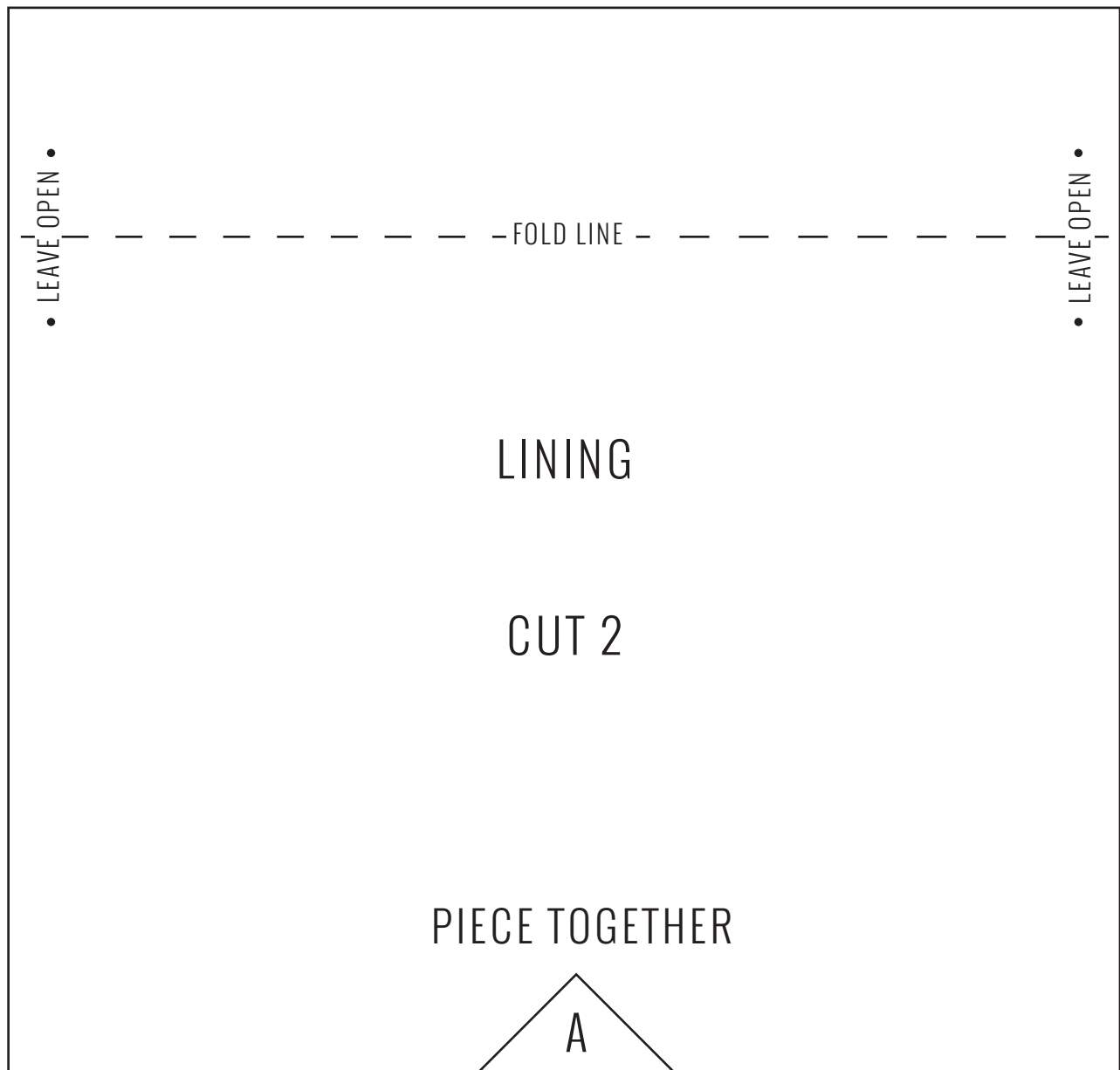


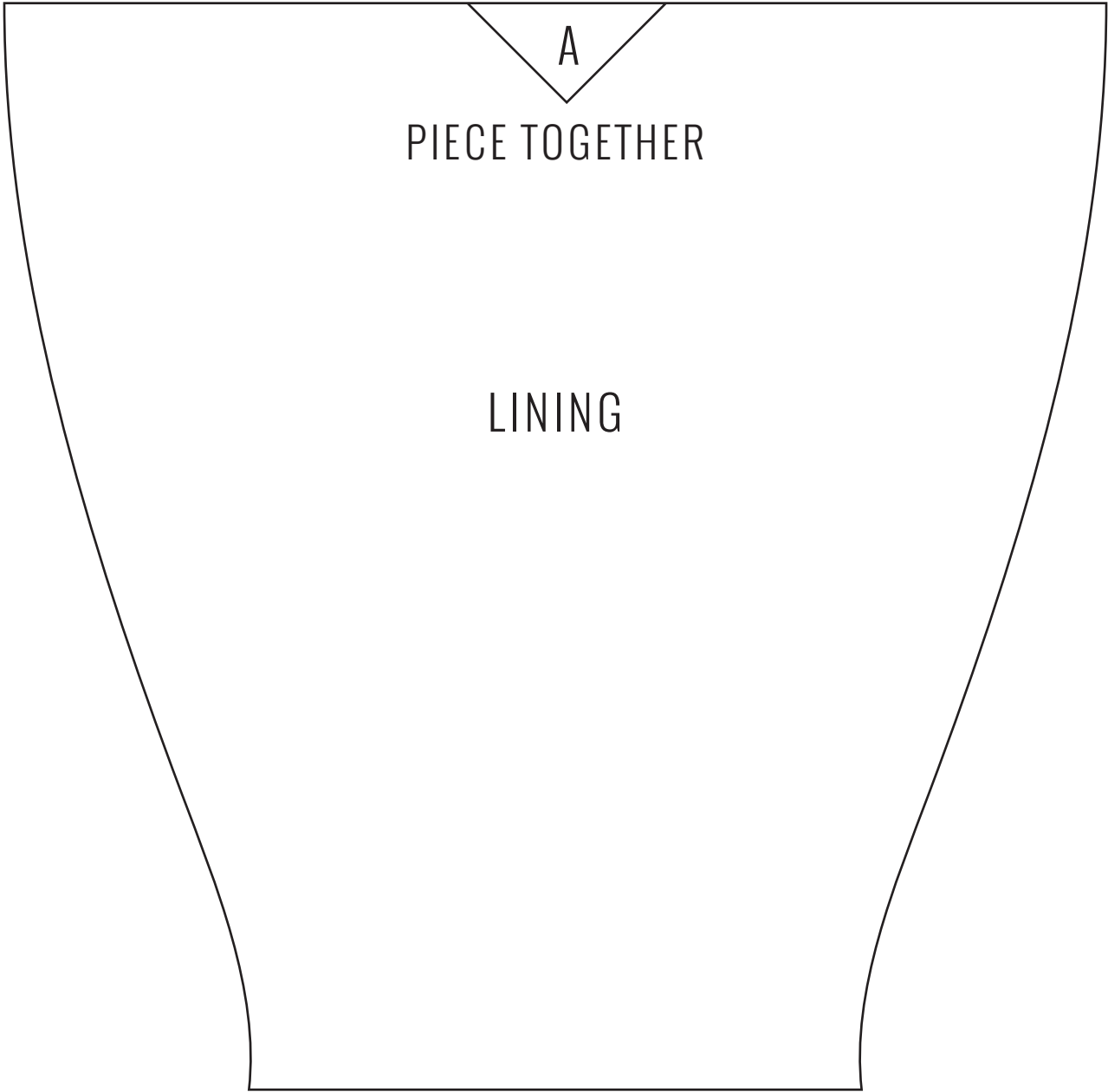


CLOUD9  
FABRICS

# DRAWSTRING FISH BAGS

©2016 cloud9 fabrics • for personal use only







TAIL BATTING CUT 1

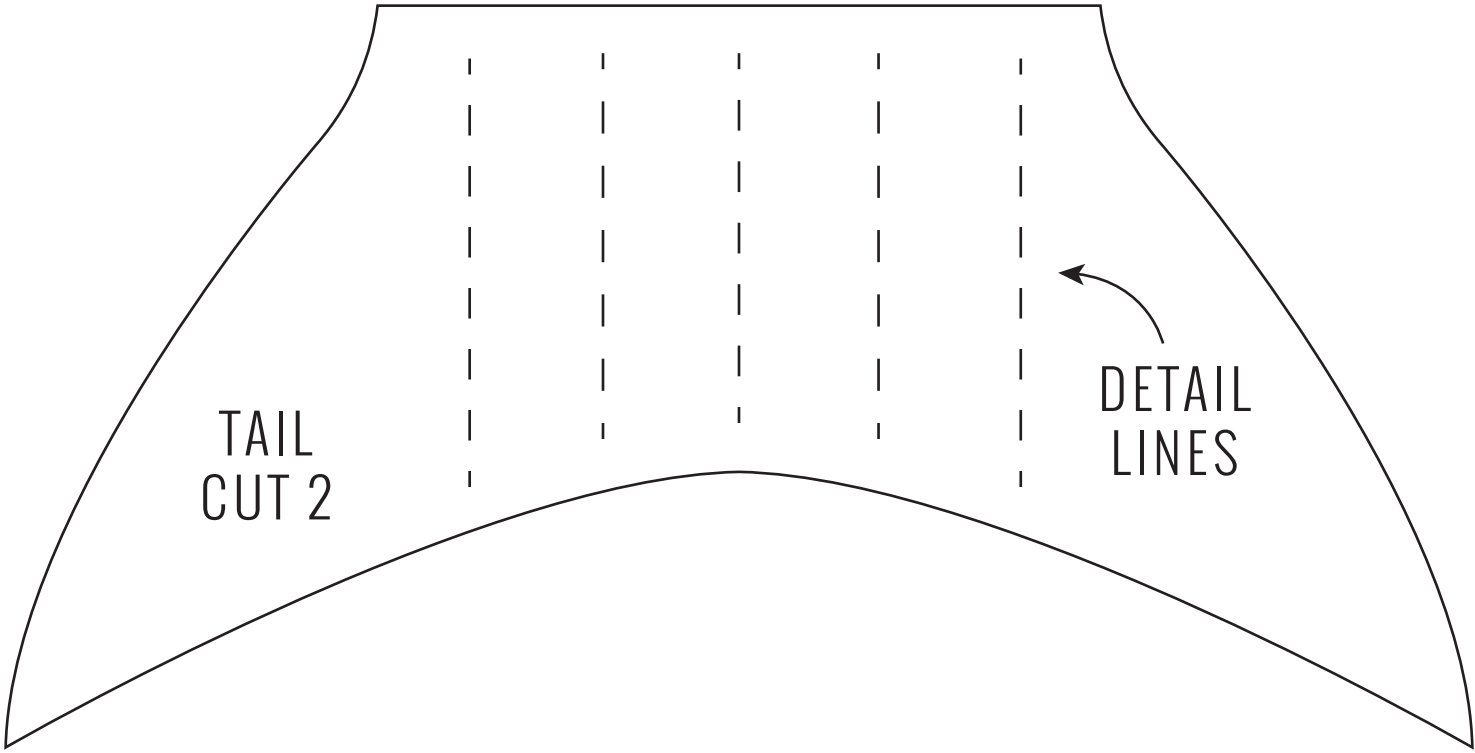
The image shows a pattern for a tail batting cut. It consists of a wide, trapezoidal shape with a straight top edge and a curved bottom edge. The top edge is slightly wider than the bottom edge. The sides are curved outwards, creating a flared appearance. The text 'TAIL BATTING CUT 1' is centered within the shape.



OUTER BODY - CUT 2

The image shows a pattern for an outer body cut. It consists of a wide, trapezoidal shape with a straight top edge and a curved bottom edge. The top edge is slightly wider than the bottom edge. The sides are curved outwards, creating a flared appearance. The text 'OUTER BODY - CUT 2' is centered within the shape.

OUTER HEAD - CUT 2



TAIL  
CUT 2

DETAIL  
LINES

DRAWSTRING FISH BAGS

©2016 cloud9 fabrics • for personal use only

## Instructions and Assembly :

<http://cloud9fabrics.com/make-sew-drawstring-fish-bag/>