

CAMELOT  
FABRICS

FRESHLY MADE



- Skill Level: ●●●●●
- Approx. crafting time:  
Afternoon project
- Final hat size: 6" high (does not include nose) x 9" wide (18" circumference)
- Final tail size: 15" high x 6" wide

#### Fabric Requirements

- 3/4 yard of orange fleece from Camelot Fabrics (58" wide) in 8322/G #60
- Fat quarter of white fleece from Camelot Fabrics (58" wide) in 8322/G #12
- 1"X1" of black fleece from Camelot Fabrics (58" wide) in 8322/G #11

## Fleece Fox Hat & Tail (A-003)

Toll-Free: 1-800-361-4120 • 514-382-2400  
info@camelotfabrics.com • www.camelotfabrics.com

Free  
DIY!



Camelot Fleece

## Other Supplies

- 2 black buttons (for eyes)
- One bag of fiber stuffing
- Paper printer
- Basic sewing supplies:
  - sewing machine
  - needle & coordinating thread
  - straight pins
  - scissors & fabric shears
  - fabric marker

(Note: Please wash & dry your fabric before starting. Unless otherwise stated, all seams are 1/2" wide)

Finished dimensions:

Hat: 6" high (does not include nose) x 9" wide (18" circumference)

Tail: 15" high x 6" wide

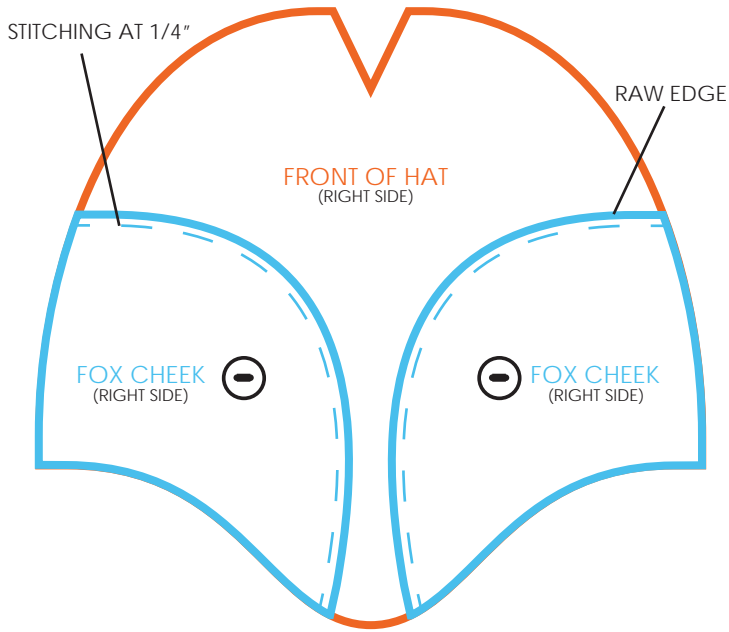
## FOX HAT

### Cutting

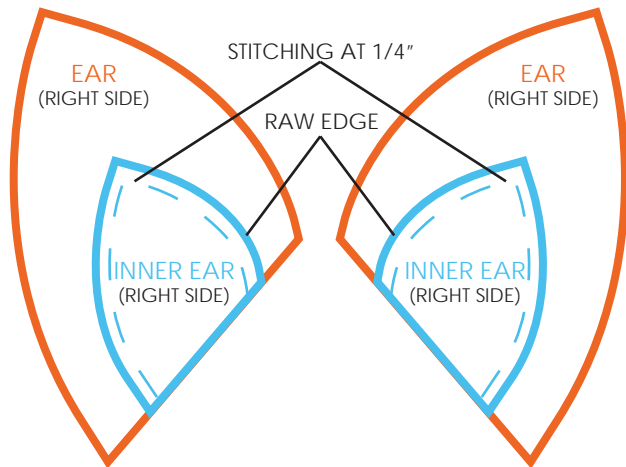
1. Print out the Fox Hat pattern (pages 8-11 of this tutorial) at 100% of actual size. Cut out the pieces. Please note that the FACING piece is too long for an 8.5" x 11" page so it has 2 parts; glue the pattern pieces together following the instructions on the template.
2. Trace each piece onto the Wrong Side of your fleece (making sure to trace onto the correct color fleece as indicated on the pattern). Cut out the pieces.
3. Your cut fleece pieces should look like this:



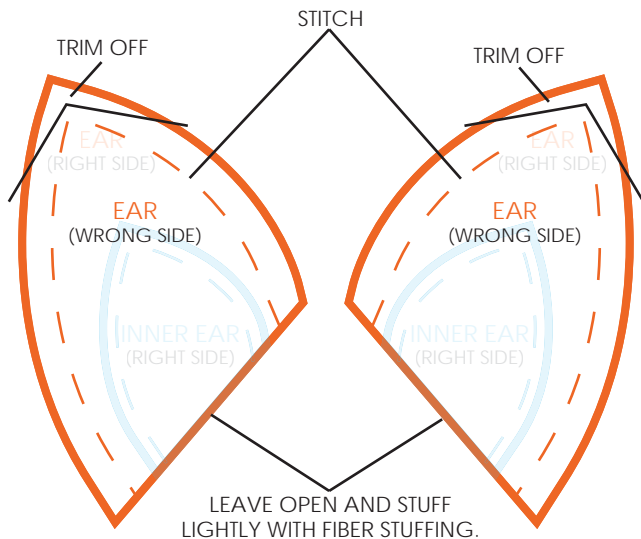
## Assembly



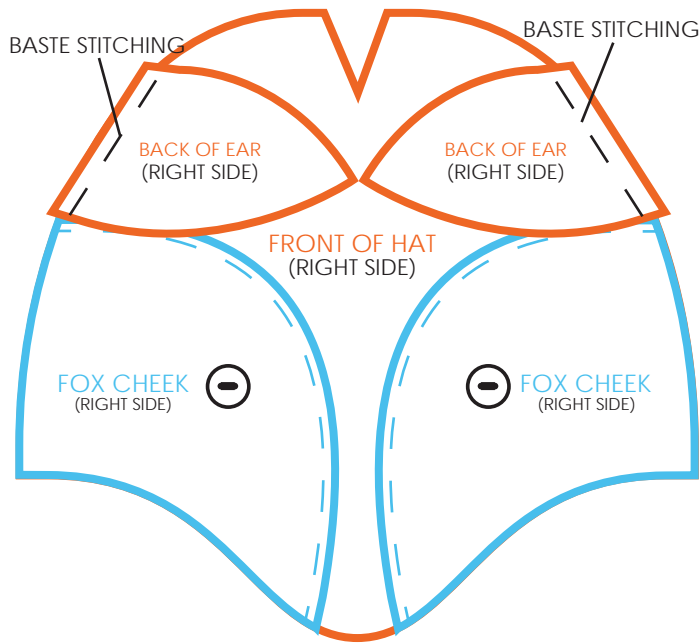
1. Place the Cheeks onto the Front of the Hat as shown, with the Wrong Sides of the Cheek pieces against the Right Side of the Hat pieces.
2. Appliqué the Cheeks to the Front of the Hat by sewing along the top curved edge at 1/4" (keeping a raw edge).
3. Sew the black buttons onto the Cheeks at 1.5" out and 2" down from the center of the Hat as shown.



4. Place each Inner Ear piece onto its matching Ear piece, Right Sides facing up. Appliqué the Inner Ears onto the Ears by sewing along the side edges at 1/4" (keeping a raw edge).



5. Overlap the front of the Ear (Ear piece with the Inner Ear stitched on) with the back of the Ear (Ear piece without anything stitched on) Right Sides together and stitch along the sides of the Ear, leaving the bottom open. Trim off excess seam allowance from corners. Do this for both Ears.

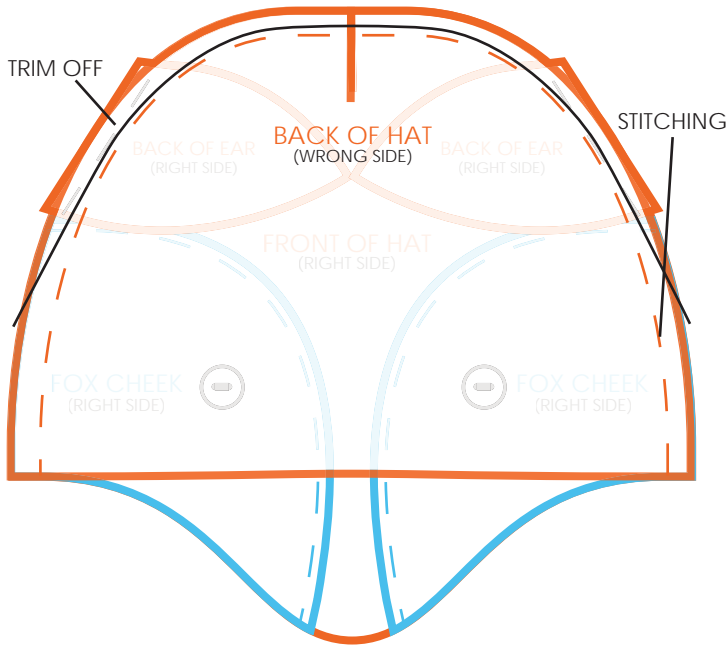


6. Turn the Ears right side out & stuff them slightly to give structure.

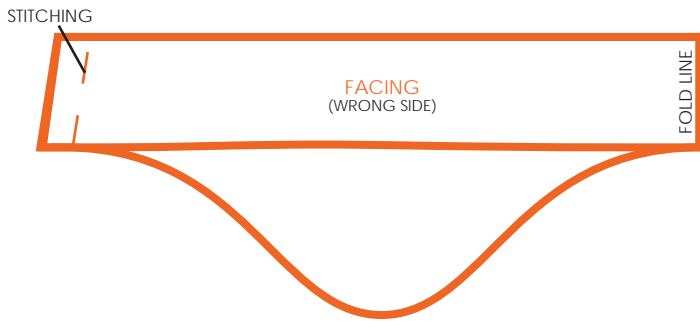
7. Overlap the Ears onto the Front of the Hat, placing them just above the top edges of the Cheeks. The front of each Ear should be against the Right Side of the front of the Hat. Baste each Ear to the Hat 1/4" from the Ear's straight edge.



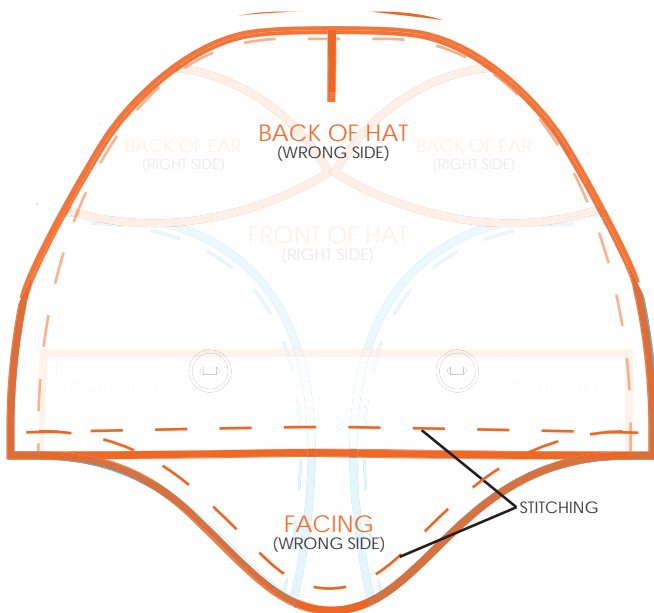
8. Fold the Front of the Hat piece in half lengthwise, Right Sides together, and sew the dart closed, keeping a smooth curve. Repeat this step for the Back of the Hat piece.



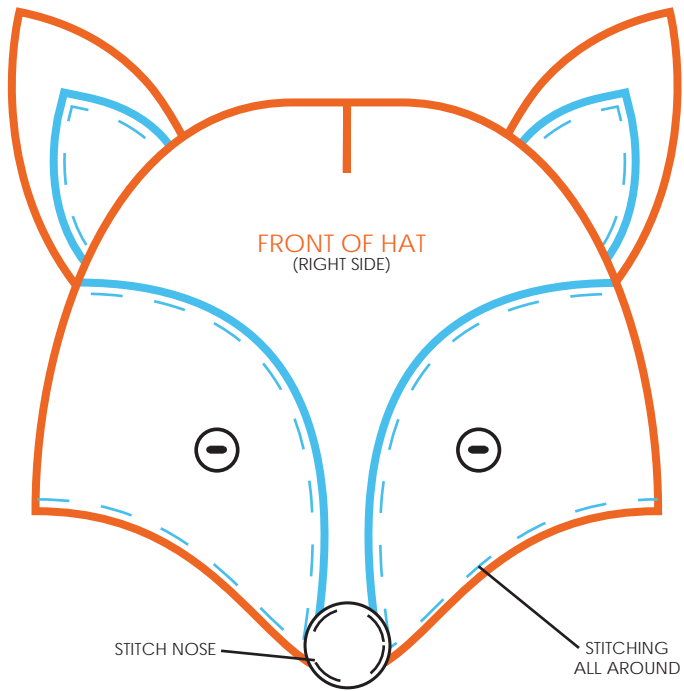
9. Overlap the Front of the Hat & the Back of the Hat, Right Sides together. Stitch along the top, leaving the bottom open; make sure the Ears are sandwiched between the two Hat pieces when you're stitching. Trim off the excess seam allowance.



10. Match up the short edges of the Facing by folding the piece in half, Right Sides together, and stitch along the short edge.



11. Place the Facing inside the Hat, Right Sides together, matching up the bottom. Stitch along the bottom edge all around the hat opening; make sure not to sew all 4 layers together.



12. Turn the Hat right side out and topstitch 1/4" from edge along the Hat opening. Make sure to switch to white thread when stitching over the Cheeks.

13. Tack the facing onto the seam allowance inside the Hat at either side.

14. Appliqué the Nose on the edge of the Front Hat, stitching 1/4" around the Nose.

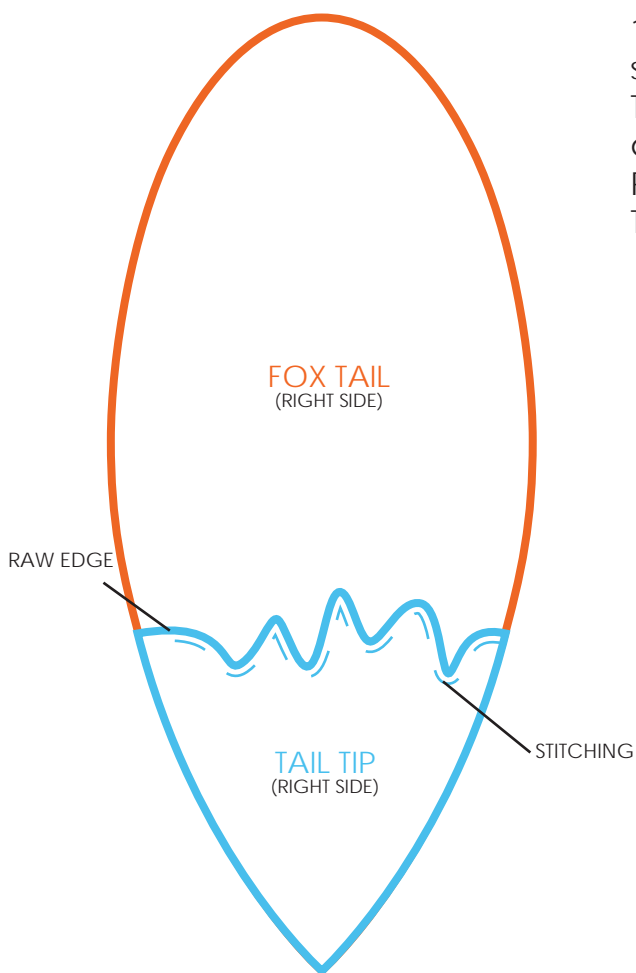
# FOX TAIL

## Cutting

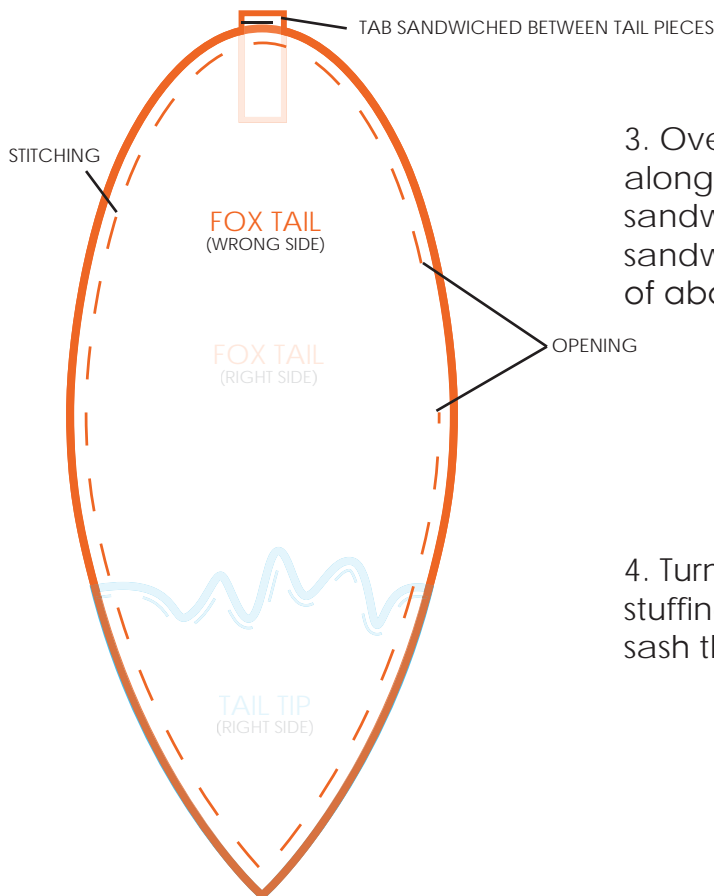
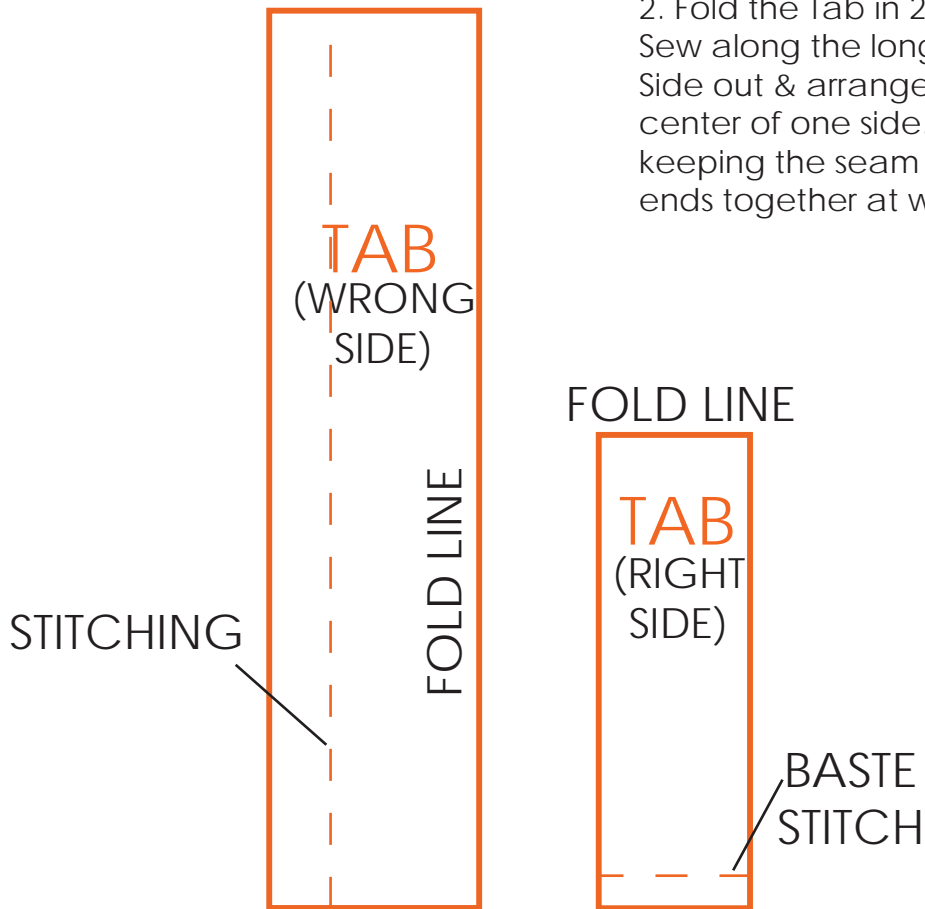
1. Print out the Fleece Fox Tail pattern (pages 12-14 of this tutorial) at 100% of its actual size. Cut out the pieces. Please note that the FOX TAIL piece is too long for an 8.5" x 11" page so it has 2 parts; glue the pattern pieces together following the instructions on the template.
2. Trace each piece onto your fleece (making sure to trace onto the correct color fleece as indicated on the pattern). Cut out the pieces.

## Assembly

1. Place one Tail Tip onto its corresponding Fox Tail as shown, both Right Sides facing up. Appliqué the Tail Tip onto the Fox Tail along the top edge by stitching at 1/4" from the edge, which you'll leave raw. Repeat this step with the remaining Fox Tail and Tail Tip.



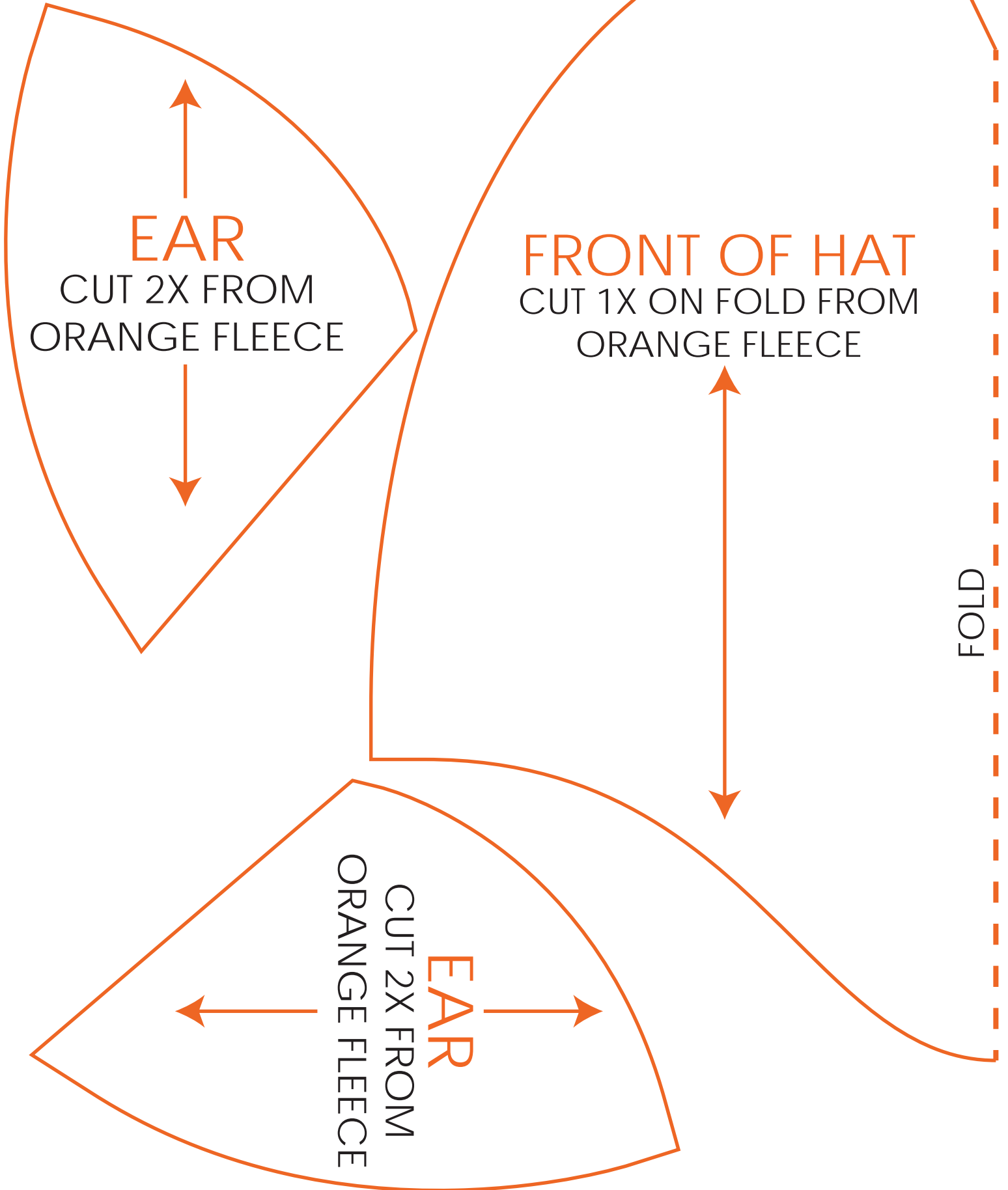
2. Fold the Tab in 2 lengthwise, Right Sides together. Sew along the long raw edge. Turn the Tab Right Side out & arrange it so that the seam runs down the center of one side. Fold the Tab in 2 widthwise, keeping the seam on the inside, and baste the short ends together at with a 1/4" seam allowance.

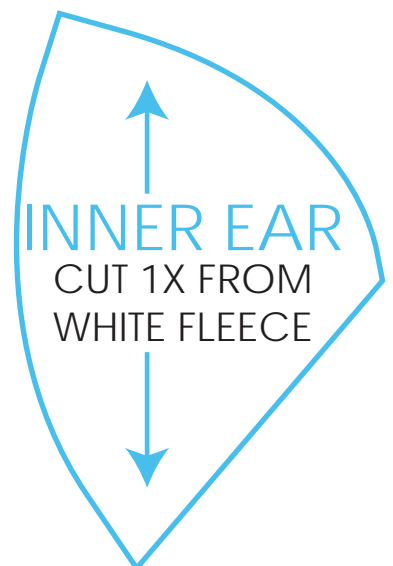
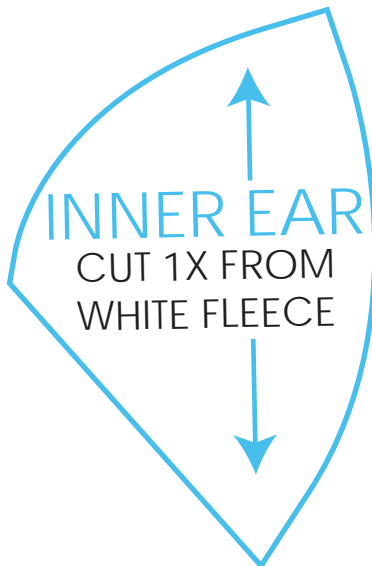
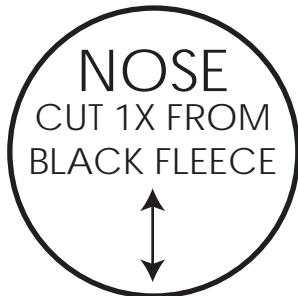


3. Overlap the Fox Tails, Right Sides together. Stitch along the edge, making sure the Tail Tips are sandwiched at the tips of the Tail pieces & the Tab is sandwiched at the top of the Tail. Leave an opening of about 3" on one side of the Tail.

4. Turn your project Right Side out, stuff with fiber stuffing and stitch the opening closed. Slip a belt or sash through the Tab to wear the Tail.

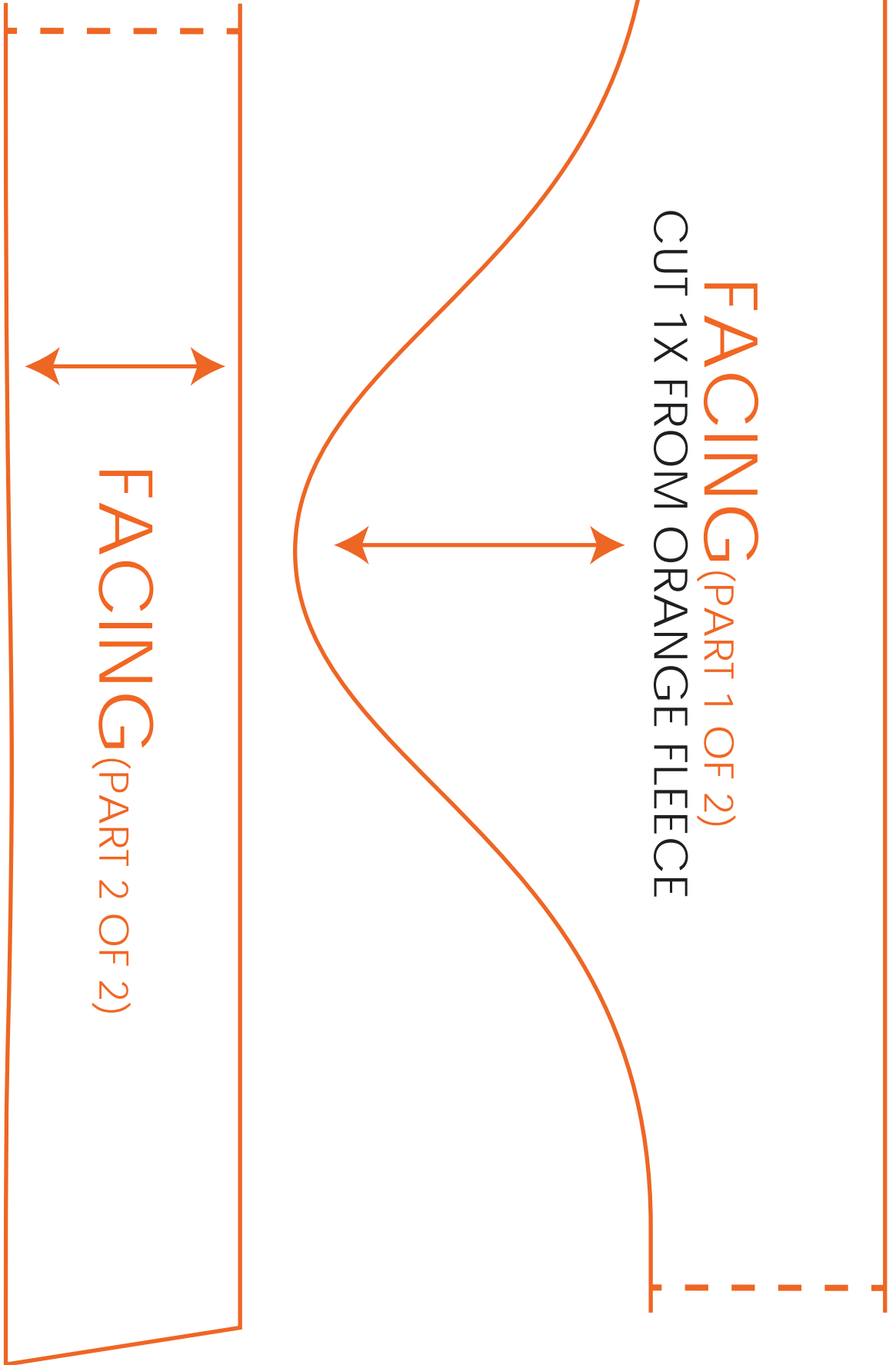


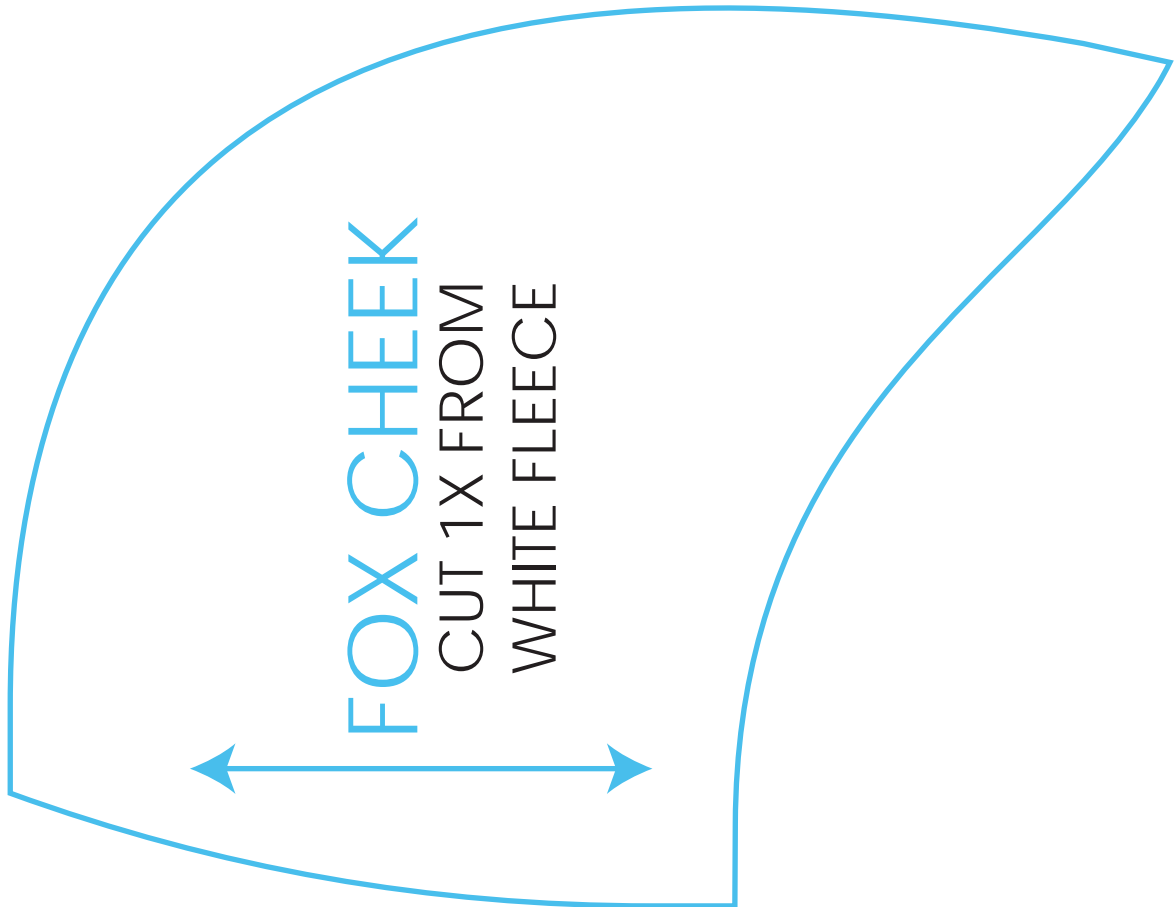
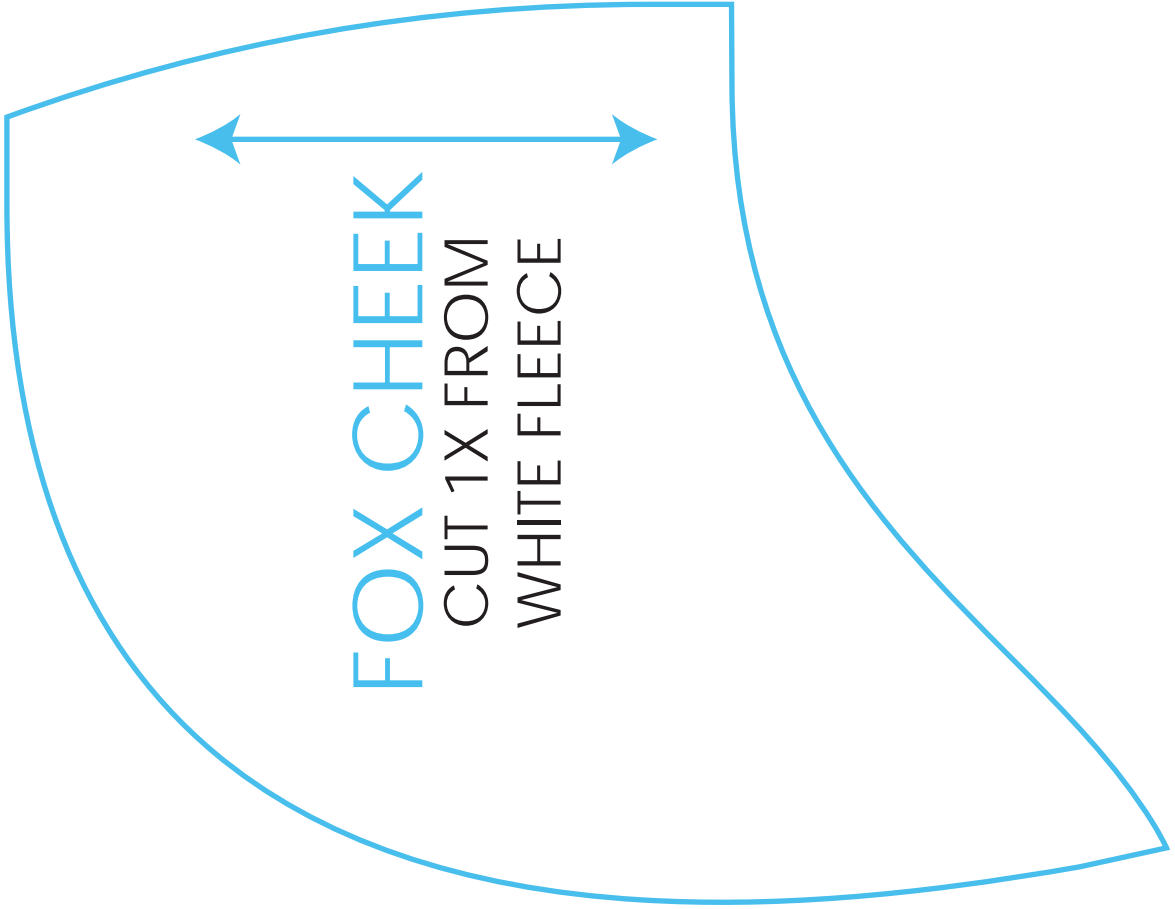






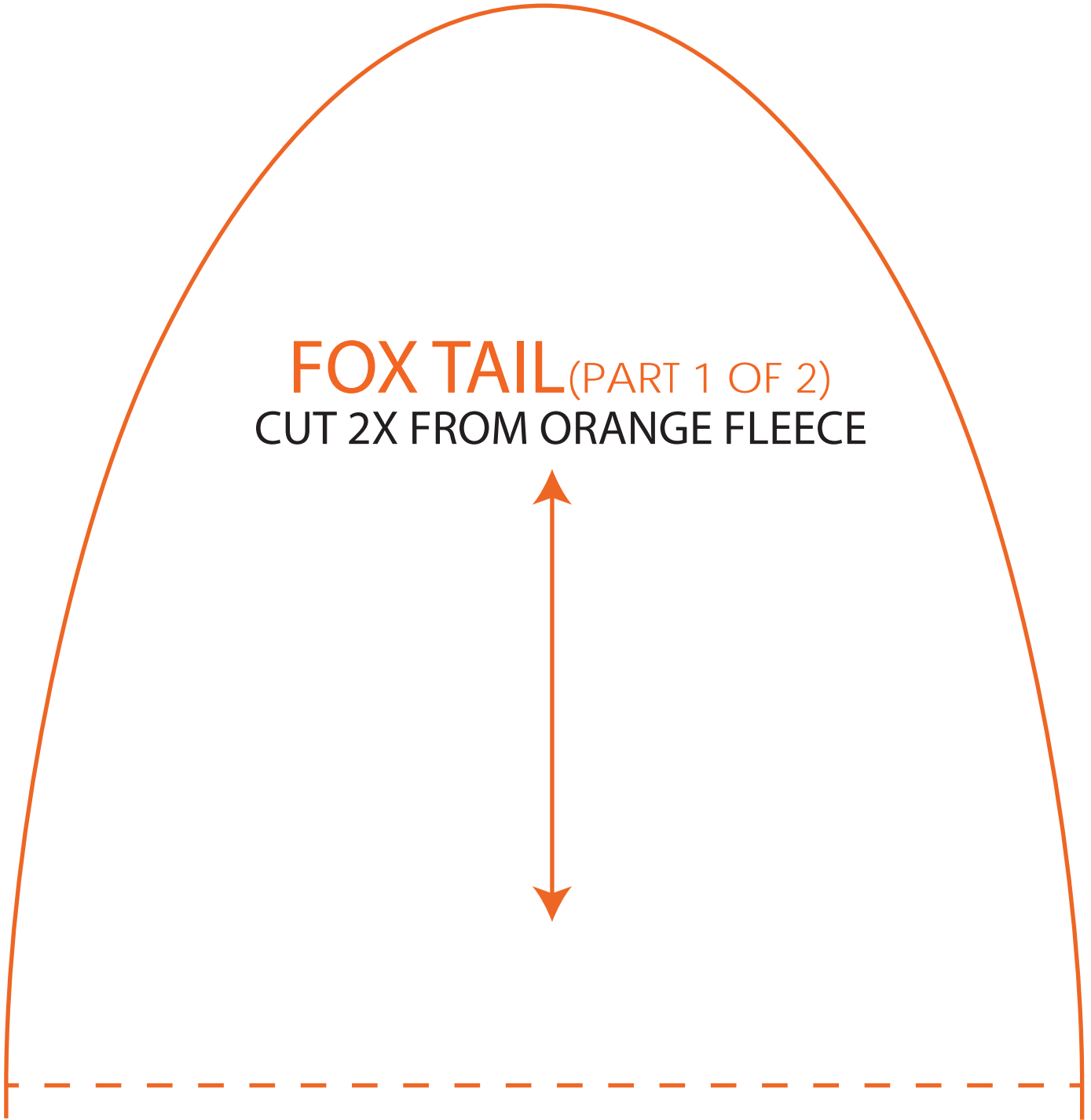
ATTACH PART 1 TO PART 2 BY ALIGNING THE DOTTED LINES  
AND GLUING THE PIECES TOGETHER







**FOX TAIL** (PART 1 OF 2)  
CUT 2X FROM ORANGE FLEECE



ATTACH PART 1 TO PART 2 BY ALIGNING THE DOTTED LINES  
AND GLUING THE PIECES TOGETHER



ATTACH PART 2 TO PART 1 BY ALIGNING THE DOTTED LINES  
AND GLUING THE PIECES TOGETHER

**FOX TAIL** (PART 2 OF 2)  
CUT 2X FROM ORANGE FLEECE

