

michael miller FABRICS

HOW DOES YOUR GARDEN GROW *Quilt*

Size: 54" W x 66" H | Designed by: Heidi Pridemore | Level: Intermediate



Free Pattern available on michaelmillerfabrics.com



FABRIC REQUIREMENTS



CX7654-JEWEL
1 YARD (BLOCKS)



CX7656-GARDEN
1 7/8 YARDS (BLOCKS)



CX7658-PEONY
1/2 YARD (BLOCKS)



CX7655-PEONY
7/8 YARD (BLOCKS)



CX7655-STONE
7/8 YARD (BORDER)



CX7657-JEWEL
1/2 YARD (BINDING)



CX7654-GARDEN
3-1/2 YARDS (BACKING)

FABRIC REQUIREMENTS

SKU	YARDAGE PER ONE QUILT	# OF BOLTS FOR 12 KITS	# OF BOLTS FOR 24 KITS
(A) CX7654 - JEWEL	1 YARD	1 BOLT (12 YARDS)	2 BOLTS (24 YARDS)
(B) CX7656 - GARDEN	1-7/8 YARDS	2 BOLTS (22 1/2 YARDS)	3 BOLTS (45 YARDS)
(C) CX7658 - PEONY	1/2 YARD	1 BOLT (6 YARDS)	1 BOLT (12 YARDS)
(D) CX7655 - PEONY	7/8 YARD	1 BOLT (10 1/2 YARDS)	2 BOLTS (21 YARDS)
(E) CX7655 - STONE	7/8 YARD	1 BOLT (10 1/2 YARDS)	2 BOLTS (21 YARDS)
(F) CX7657 - JEWEL	1/2 YARD	1 BOLT (6 YARDS)	1 BOLT (12 YARDS)
(BACKING) CX7654 - GARDEN	3-1/2 YARDS	3 BOLTS (42 YARDS)	6 BOLTS (84 YARDS)
TOTAL BOLTS NEEDED		10 BOLTS (7 W / 0 BACK)	17 BOLTS (11 W / 0 BACK)

WE DO OUR BEST TO MAKE SURE THESE ARE ACCURATE YARDAGES BUT THESE ARE ESTIMATES UNTIL THE FINAL PATTERN IS COMPLETED AND EDITED. THANK YOU.

"How Does Your Garden Grow"

Quilt by Heidi Pridemore

Size: Approximately 54" x 66" Skill Level: Intermediate

Materials

Cutting instructions

Please Note: All strips are cut across the width of fabric (WOF) from selvage to selvage edge unless otherwise noted.

	Fabric	Yardage	Cutting
(A)	CX7654-Jewel Bellflower – Jewel	1 yard	<ul style="list-style-type: none"> • Cut four 6 $\frac{7}{8}$" x WOF strips. Sub-cut the strips into twenty 6 $\frac{7}{8}$" squares. Cut the squares across one diagonal to make forty triangles.
(B)	CX7656-Garden Flying Colors – Garden	1 $\frac{7}{8}$ yards	<ul style="list-style-type: none"> • Cut four 3 $\frac{7}{8}$" x WOF strips. Sub-cut the strips into forty 3 $\frac{7}{8}$" squares. Cut the squares across one diagonal to make eighty triangles. • Cut forty Template 1 background pieces.
(C)	CX7658-Peony Pebble Path – Peony	$\frac{1}{2}$ yard	<ul style="list-style-type: none"> • Cut four 3 $\frac{1}{2}$" x WOF strips. Sub-cut the strips into forty 3 $\frac{1}{2}$" squares.
(D)	CX7655-Peony Pink Bells – Peony	$\frac{7}{8}$ yard	<ul style="list-style-type: none"> • Cut forty Template 2 arc pieces.
(E)	CX7655-Stone Pink Bells – Stone	$\frac{7}{8}$ yard	<ul style="list-style-type: none"> • Cut four 3 $\frac{1}{2}$" x WOF strips. Sew the strips together end to end with diagonal seams and cut two 3 $\frac{1}{2}$" x 60 $\frac{1}{2}$" strips. • Cut three 3 $\frac{1}{2}$" x WOF strips. Sew the strips together end to end with diagonal seams and cut two 3 $\frac{1}{2}$" x 54 $\frac{1}{2}$" strips.
(F)	CX7657-Jewel How Does Your Garden Grow – Jewel	$\frac{1}{2}$ yard	<ul style="list-style-type: none"> • Cut six 2 $\frac{1}{2}$" x WOF strips for the binding.
Backing	CX7654-Garden Bellflower – Garden	3 $\frac{1}{2}$ yards	<ul style="list-style-type: none"> • Cut two 62" x WOF strips. Piece the strips together and trim to make the 62" x 74" pieced backing.

You will also need:

- 62" x 74" batting, threads to match, scissors, straight pins, acrylic ruler, rotary cutter and mat.

Disclaimers

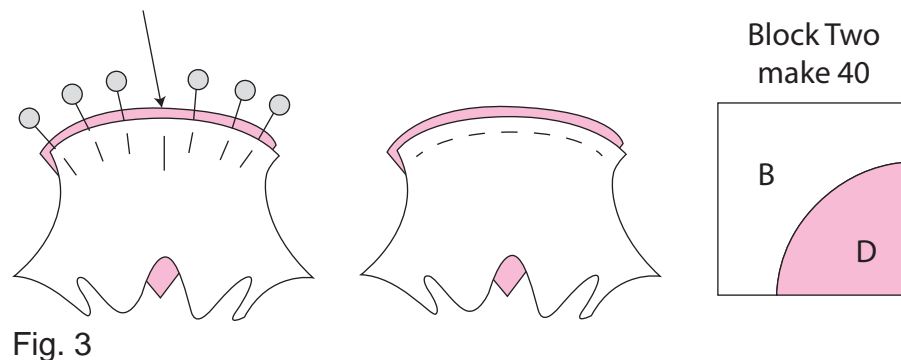
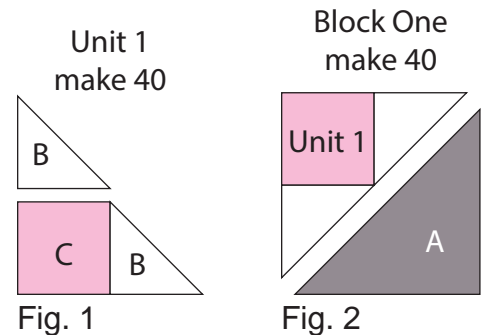
This pattern is provided as a courtesy to quilt stores, catalogs and quilters. Michael Miller Fabrics, LLC is not responsible for the accuracy of any kits packaged to accompany this pattern. Please direct any inquiries to the kit maker.

Yardage requirements for this pattern may allow for excess yardage to accommodate specific placement of motifs or to allow for any fussy-cutting to achieve the finished quilt design.

While every attempt has been made to give accurate measurements, yardage requirements and construction directions; this does not allow personal variations in measuring, cutting or sewing. The enclosed directions were used in the construction of the original quilt.

Block Assembly

1. Sew one Fabric B triangle to adjacent sides of one 3 1/2" Fabric C square to make one Unit 1 triangle (Fig. 1). Repeat to make forty Unit 1 triangles total.
2. Sew one Fabric A triangle to the long side of the Unit 1 triangle to make one Block One square (Fig. 2). Repeat to make forty Block One squares total.
3. Find and mark the center of the curve on the Fabric D arc piece and Fabric B background piece.
4. Align the Fabric D arc piece and Fabric B background piece, right sides together, matching the center mark on each piece. Pin the two pieces together at the center mark, then at each end. Continue to pin as needed. Carefully sew the two pieces together using a 1/4" seam (Fig. 3). Flip open the sewn unit and press to make one Block Two square (Fig. 3).
5. Repeat Steps 3-4 to make forty Block Two squares total.

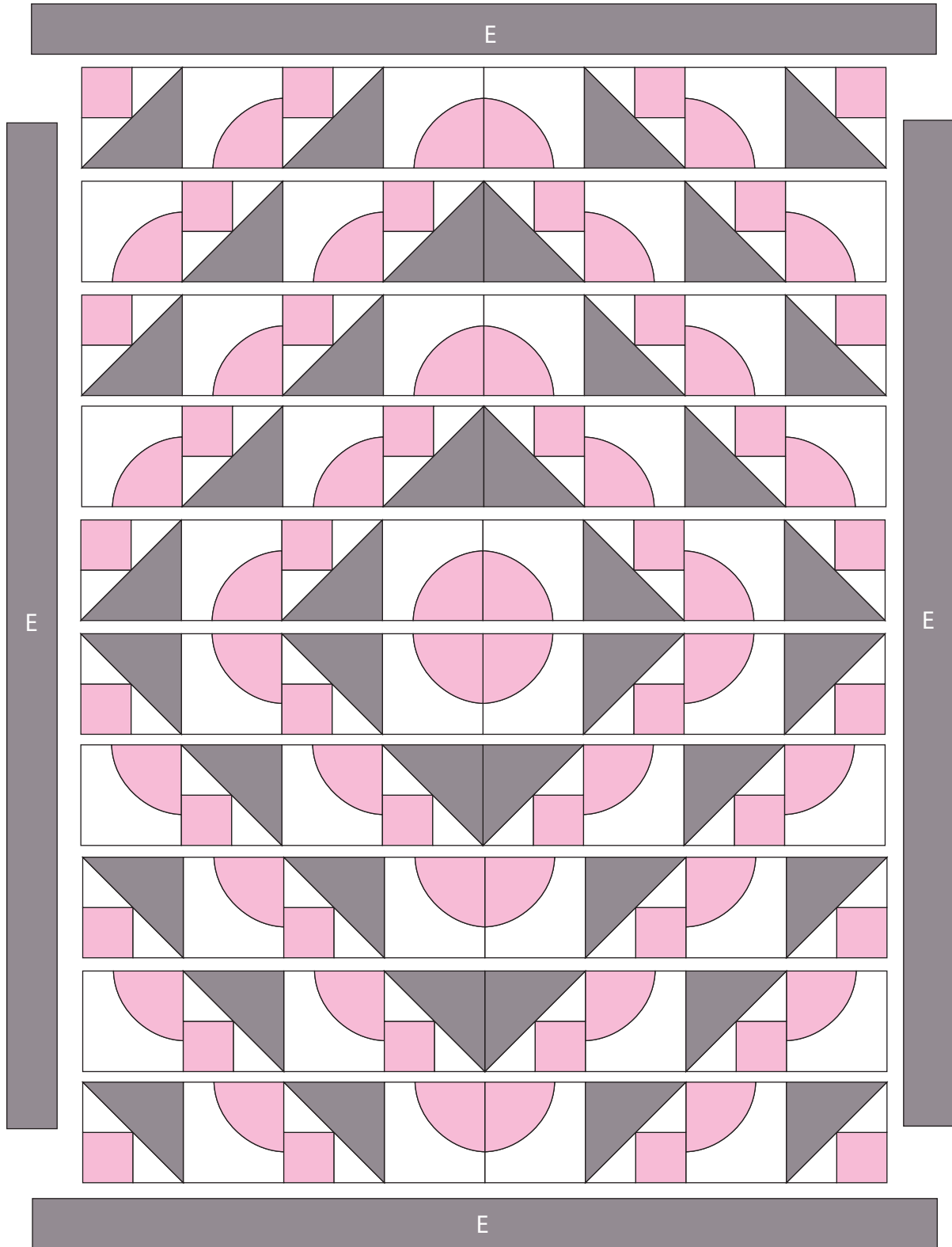


Quilt Top Assembly

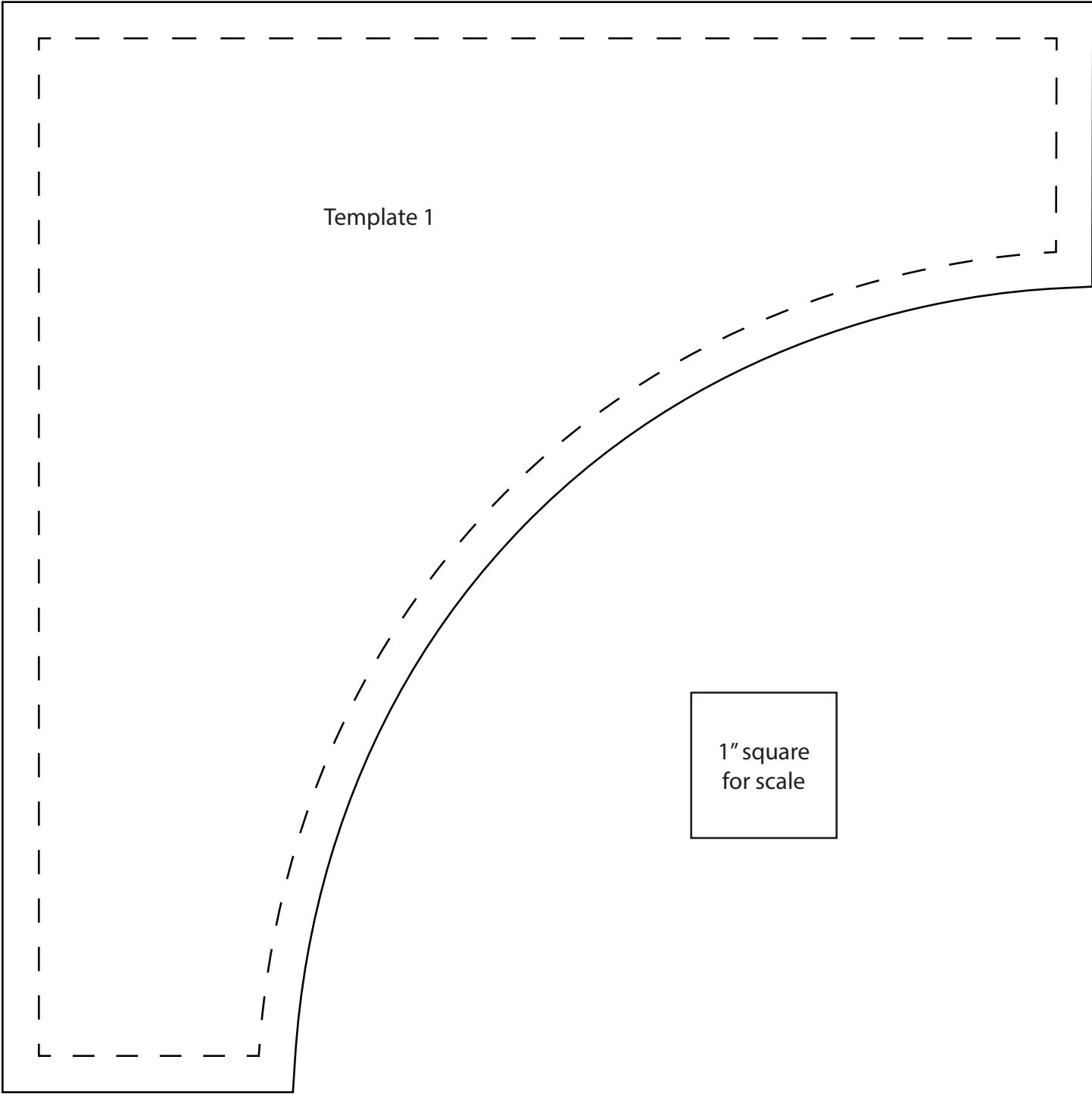
(Follow the Quilt Layout while assembling the quilt top.)

6. Sew four Block One squares and four Block Two squares together to make one row. Repeat to make ten rows total. Pay attention to the orientation and placement of the blocks.
7. Sew the ten rows together to make the Center Block as shown in the Quilt Layout.
8. Sew one 3 1/2" x 60 1/2" Fabric E strip to each side of the Center Block. Sew one 3 1/2" x 54 1/2" Fabric E strip to the top and to the bottom of the Center Block to make the quilt top.

9. Layer and quilt as desired.
10. Sew the six 2 1/2" x WOF Fabric F strips together, end-to-end with 45-degree seams, to make the binding. Fold this long strip in half lengthwise with wrong sides together and press
11. Bind as desired.



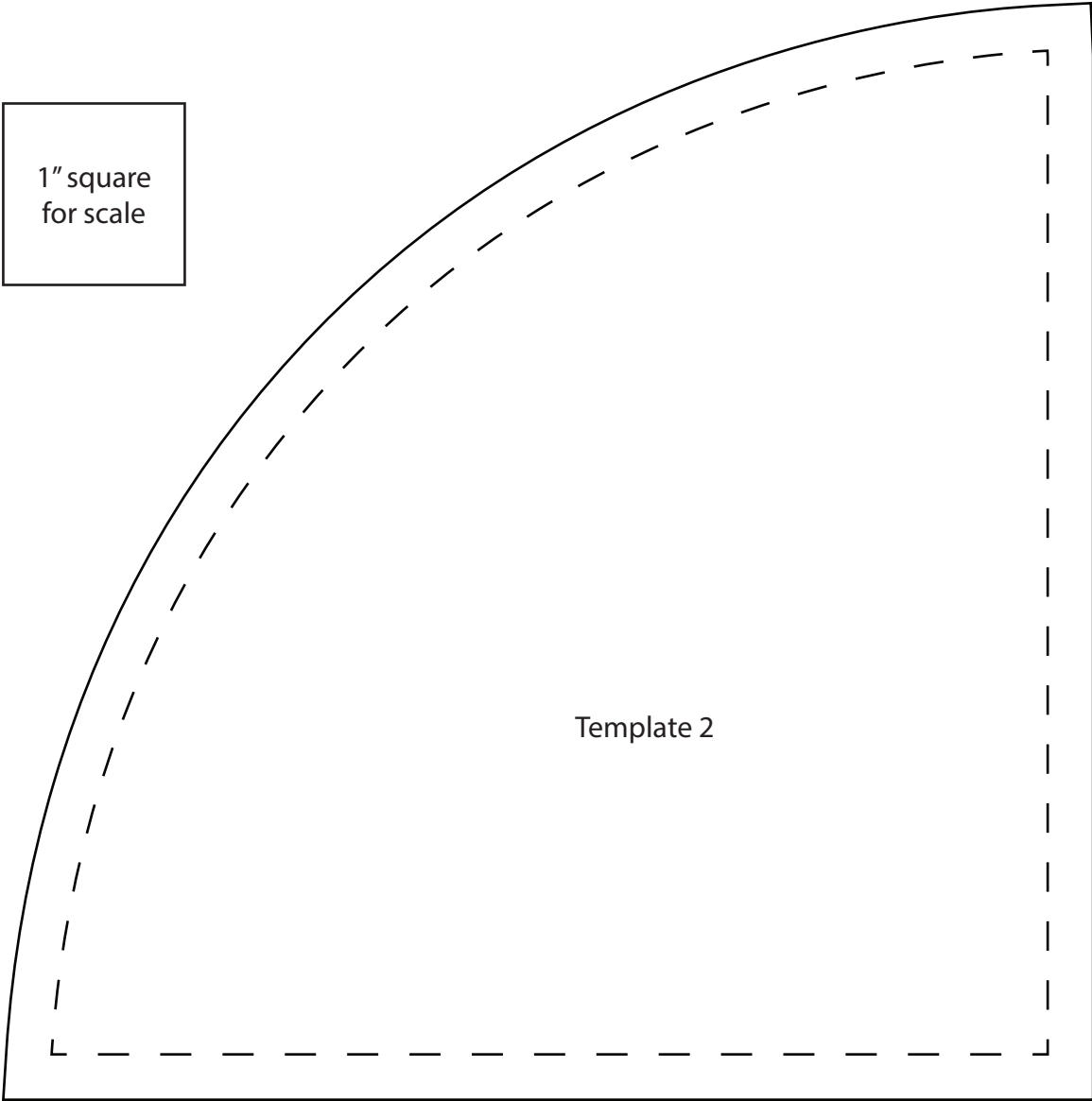
Quilt Layout



Template 1

1" square
for scale

1" square
for scale



Template 2