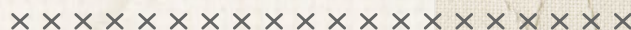




# INK + MEND



FREE PATTERN





# INK + MEND

QUILT DESIGNED BY *AGFstudio*

## INK PERFECT

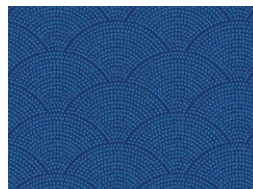
INDIGO EDITION

FABRICS DESIGNED BY AGF STUDIO



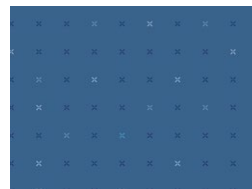
**Fabric A**

INK11908  
DIAMOND STREAM



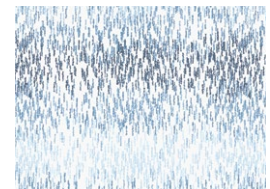
**Fabric B**

INK11907  
SHAKEN DOTS



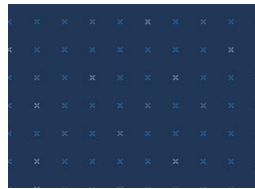
**Fabric C**

INK11905  
CROSSED GRID ONWA



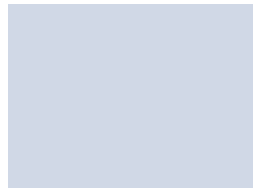
**Fabric D**

INK11901  
LINEAR STORM HIKARI



**Fabric E**

INKL11915  
CROSSED GRID KURAI



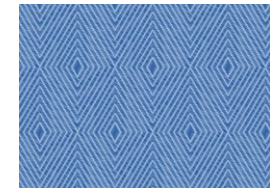
**Fabric F**

PE529  
PERRIWINKLE



**Fabric G**

PE434  
TRANQUIL WATERS



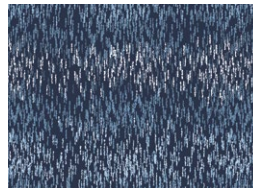
**Fabric H**

INK11904  
GEOMETRIC INCEPTION



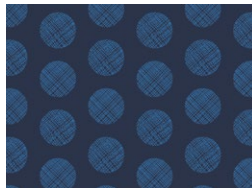
**Fabric I**

PE465  
DENIM BLUE



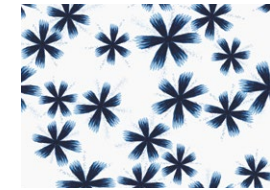
**Fabric J**

INK11911  
LINEAR STORM KURAI



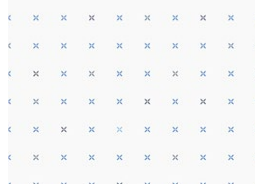
**Fabric K**

INK11909  
POINTELLE RINGS



**Fabric L**

INK11900  
INKED PETALS



**Fabric M**

INKL11912  
CROSSED GRID HIKARI



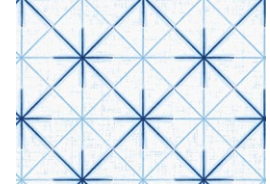
**Fabric N**

PE433  
SNOW



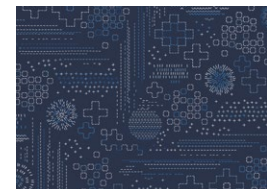
**Fabric O**

PE428  
NOCTURNAL



**Fabric P**

INK11902  
ITAJIME BLOCKS



**Backing**

INK11910  
SASHIKO CRAFT KURAI



# INK + MEND

FINISHED SIZE | 78" x 90"

## FABRIC REQUIREMENTS

Fabric <b>A</b>	INK11908	½ yd.
Fabric <b>B</b>	INK11907	1¼ yd.
Fabric <b>C</b>	INK11905	¼ yd.
Fabric <b>D</b>	INK11901	¼ yd.
Fabric <b>E</b>	INKL11915	¼ yd.
Fabric <b>F</b>	PE529	½ yd.
Fabric <b>G</b>	PE434	½ yd.
Fabric <b>H</b>	INK11904	½ yd.
Fabric <b>I</b>	PE465	½ yd.
Fabric <b>J</b>	INK11911	½ yd.
Fabric <b>K</b>	INK11909	½ yd.
Fabric <b>L</b>	INK11900	¼ yd.
Fabric <b>M</b>	INK11912	½ yd.
Fabric <b>N</b>	PE433	4 ½ yd.
Fabric <b>O</b>	PE428	½ yd.
Fabric <b>P</b>	INK11902	¼ yd.

### BACKING FABRIC

INK11910 6 ¼ yds *(Suggested)*

### BINDING FABRIC

Fabric **B** INK11907 *(Included)*

## CUTTING DIRECTIONS

¼" seam allowances are included.  
WOF means width of fabric.

### FABRIC A

- Seven (7) 7¼" squares.

### FABRIC B

- Nine (9) 7¼" squares.
- Nine (9) 2½" x WOF strips (binding).

### FABRIC C

- Three (3) 7¼" squares.

### FABRIC D

- Four (4) 7¼" squares.

### FABRIC E

- Six (6) 7¼" squares.

### FABRIC F

- Seven (7) 7¼" squares.

### FABRIC G

- Eight (8) 7¼" squares.

### FABRIC H

- Eight (8) 7¼" squares.

### FABRIC I

- Eight (8) 7¼" squares.

### FABRIC J

- Eight (8) 7¼" squares.

### FABRIC K

- Eight (8) 7¼" squares.

## FABRIC L

- Five (5) 7¼" squares.

## FABRIC M

- Ten (10) 7¼" squares.

## FABRIC N

- One hundred and four (104) 7¼" squares.

## FABRIC O

- Eight (8) 7¼" squares.

## FABRIC P

- Five (5) 7¼" squares.

## CONSTRUCTION

*Sew all rights sides together with ¼" seam allowance.*

### QUATER SQUARE TRIANGLE

- Start with the half square triangle (HST) method by placing one (1) 7¼" squares from fabrics **N** and **G** right sides together.
- Mark a diagonal line on the wrong side of the square.
- Sew ¼" on both side of the drawn line.
- Using a rotary cutter, cut the square on the drawn line. You will end up with two half square triangles (HST). They should measure 6 ⅞".

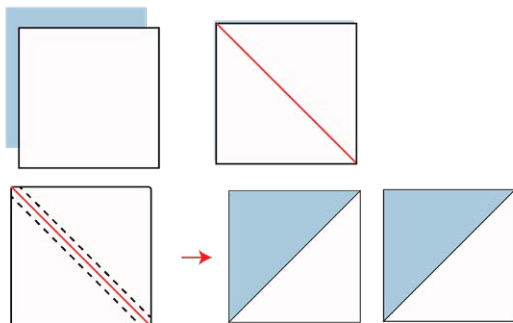


DIAGRAM 1

- Take one half square triangle (HST) and mark a diagonal line on the back of the units, from corner to corner.
- This line is perpendicular to the seam line. See Figure 1.
- With right sides together (RST), alternating dark and light fabrics, align the outside edges of the two HST and nest the seam allowances together. If you feel more comfortable, use a pin or two to hold both pieces together. See Figure 2.
- Stitch ¼" away from both sides of the drawn line. See Figure 3.
- Using a rotary cutter cut on the drawn line. You will end up with two (2) Quarter square triangles (QST)
- Each piece should measure 6½".
- Repeat these step with the same fabrics seven (7) more times. You should get a total of sixteen (16) **N-G** (QST) and for this project you will only use fifteen **N-G** pieces. .

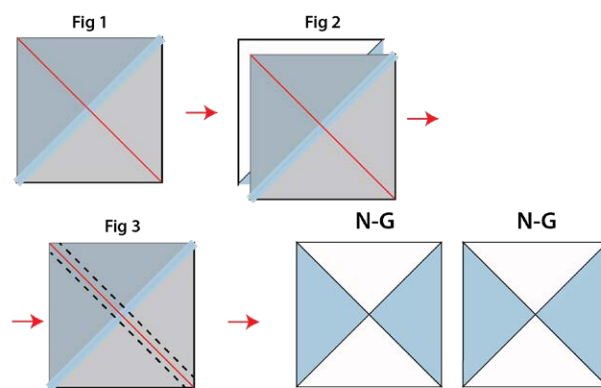


DIAGRAM 2

- Repeat the quarter square triangle (QST) method with eight (8) 7¼" squares from fabrics **N** and **H**. You should get a total of sixteen (16) **N-H** (QST) and you will only use fifteen (15) **N-H** pieces.

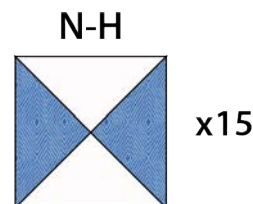


DIAGRAM 3

- Repeat the quarter square triangle (QST) method with seven (7) 7¼" squares from fabrics **N** and **F**. You should get a total of fourteen (14) **N-F** (QST) and you will only use thirteen (13) **N-F** pieces..

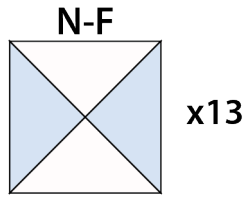


DIAGRAM 4

- Repeat the quarter square triangle (QST) method with eight (8) 7¼" squares from fabrics **N** and **I**. You should get a total of sixteen (16) **N-I** (QST) and you will only use fifteen (15) **N-I** pieces.

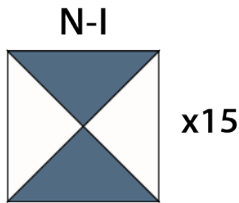


DIAGRAM 5

- Repeat the quarter square triangle (QST) method with eight (8) 7¼" squares from fabrics **N** and **J**. You should get a total of sixteen (16) **N-J** (QST) and you will only use fifteen (15) **N-J** pieces

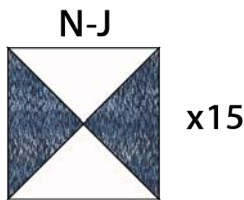


DIAGRAM 6

- Repeat the quarter square triangle (QST) method with six (6) 7¼" squares from fabrics **N** and **E**. You should get a total of twelve (12) **N-E** (QST) and you will only use eleven (11) **N-E** pieces.

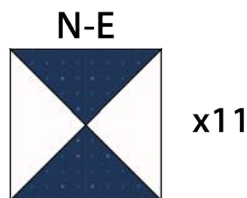


DIAGRAM 7

- XX
- Repeat the quarter square triangle (QST) method with eight (8) 7¼" squares from fabrics **N** and **K**. You should get a total of sixteen (16) **N-K** (QST) and you will only use fifteen (15) **N-K** pieces.

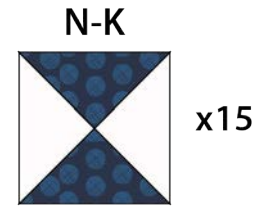


DIAGRAM 8

- Repeat the quarter square triangle (QST) method with eight (8) 7¼" squares from fabrics **N** and **O**. You should get a total of sixteen (16) **N-O** (QST) and you will only use fifteen (15) **N-O** pieces.

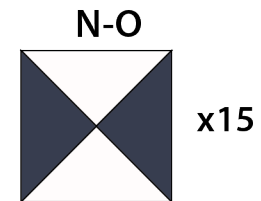


DIAGRAM 9

- Repeat the quarter square triangle (QST) method with nine (9) 7¼" squares from fabrics **N** and **B**. You should get a total of eighteen (18) **N-B** (QST) and you will only use seventeen (17) **N-B** pieces.

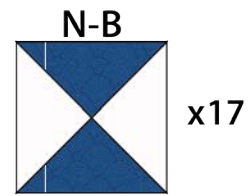


DIAGRAM 10

- Repeat the quarter square triangle (QST) method with seven (7) 7¼" squares from fabrics **N** and **A**. You should get a total of fourteen (14) **N-A** (QST) and you will only use thirteen (13) **N-A** pieces.

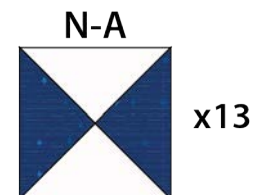


DIAGRAM 11



- Repeat the quarter square triangle (QST) method with five (5) 7¼" squares from fabrics **N** and **P**. You should get a total of ten (10) **N-P** (QST) and you will only use nine (9) **N-P** pieces.

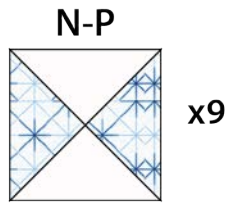


DIAGRAM 12

- Repeat the quarter square triangle (QST) method with four (4) 7¼" squares from fabrics **N** and **D**. You should get a total of eight (8) **N-D** (QST) and you will only use seven (7) **N-D** pieces.

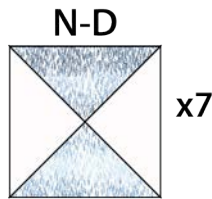


DIAGRAM 13

- Repeat the quarter square triangle (QST) method with three (3) 7¼" squares from fabrics **N** and **C**. You should get a total of six (6) **N-C** (QST) and you will only use five (5) **N-C** pieces.

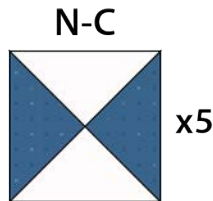


DIAGRAM 14

- Repeat the quarter square triangle (QST) method with five (5) 7¼" squares from fabrics **N** and **L**. You should get a total of ten (10) **N-L** (QST).

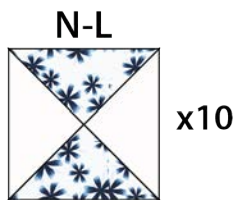


DIAGRAM 15

- Repeat the quarter square triangle (QST) method with ten (10) 7¼" squares from fabrics **N** and **M**. You should get a total of twenty (20) **N-M** (QST).

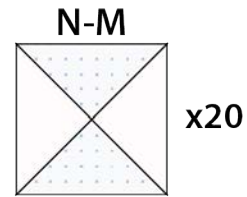


DIAGRAM 16

- Arrange all QST into fifteen (15) rows of thirteen (13) pieces each. And sew each row.
- See diagram below for reference.

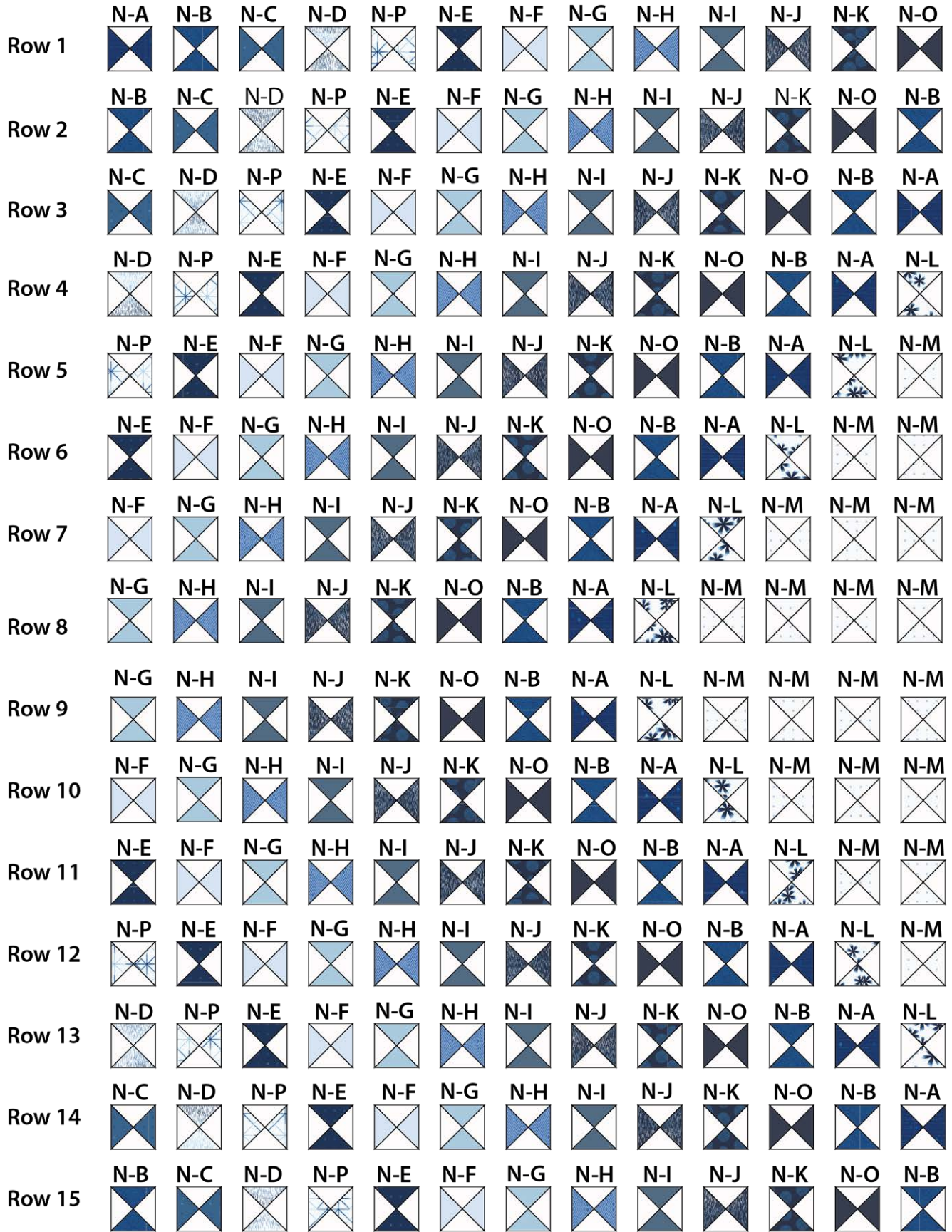


DIAGRAM 17

- Sew all rows together.

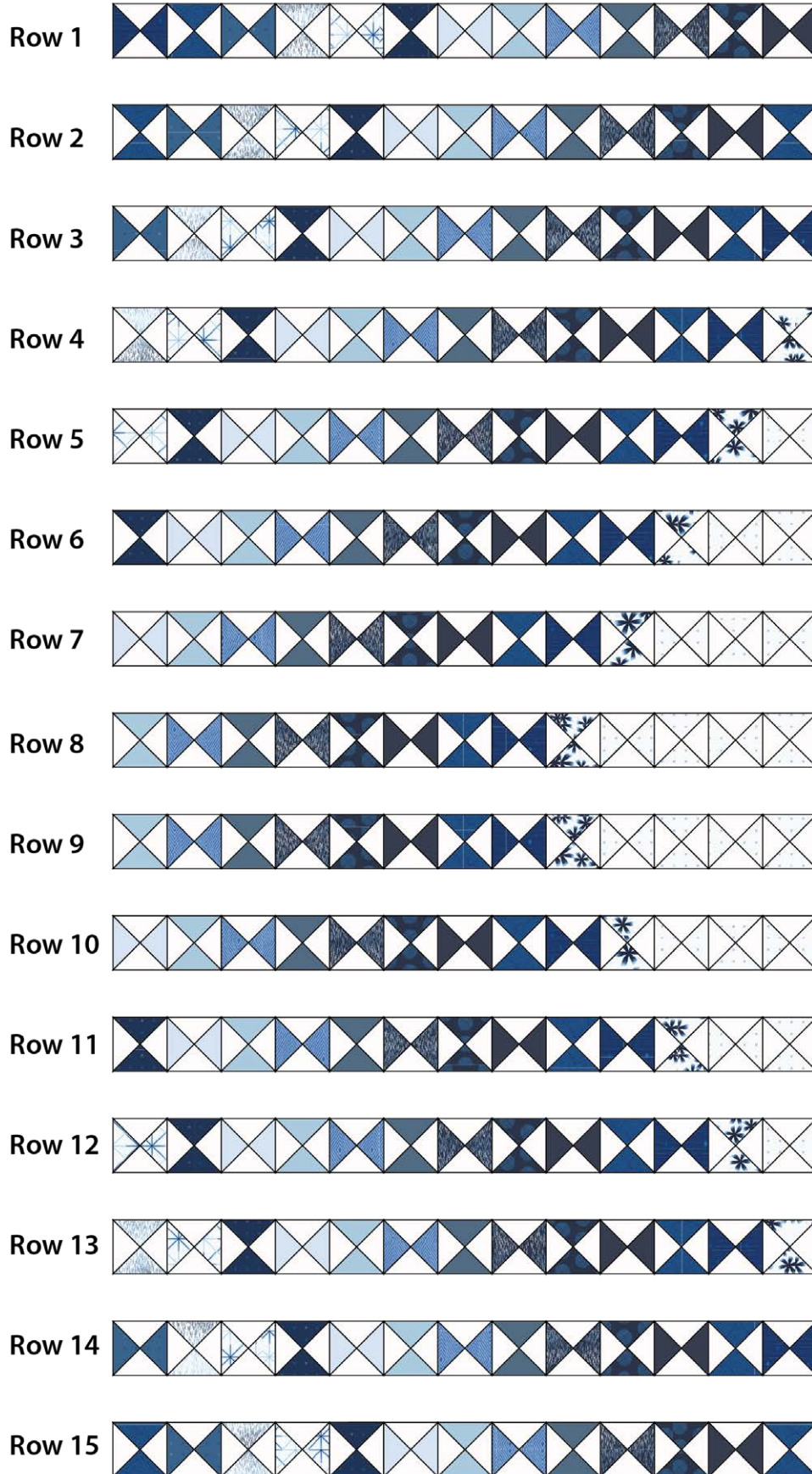


DIAGRAM 18



- Your quilt top is ready.

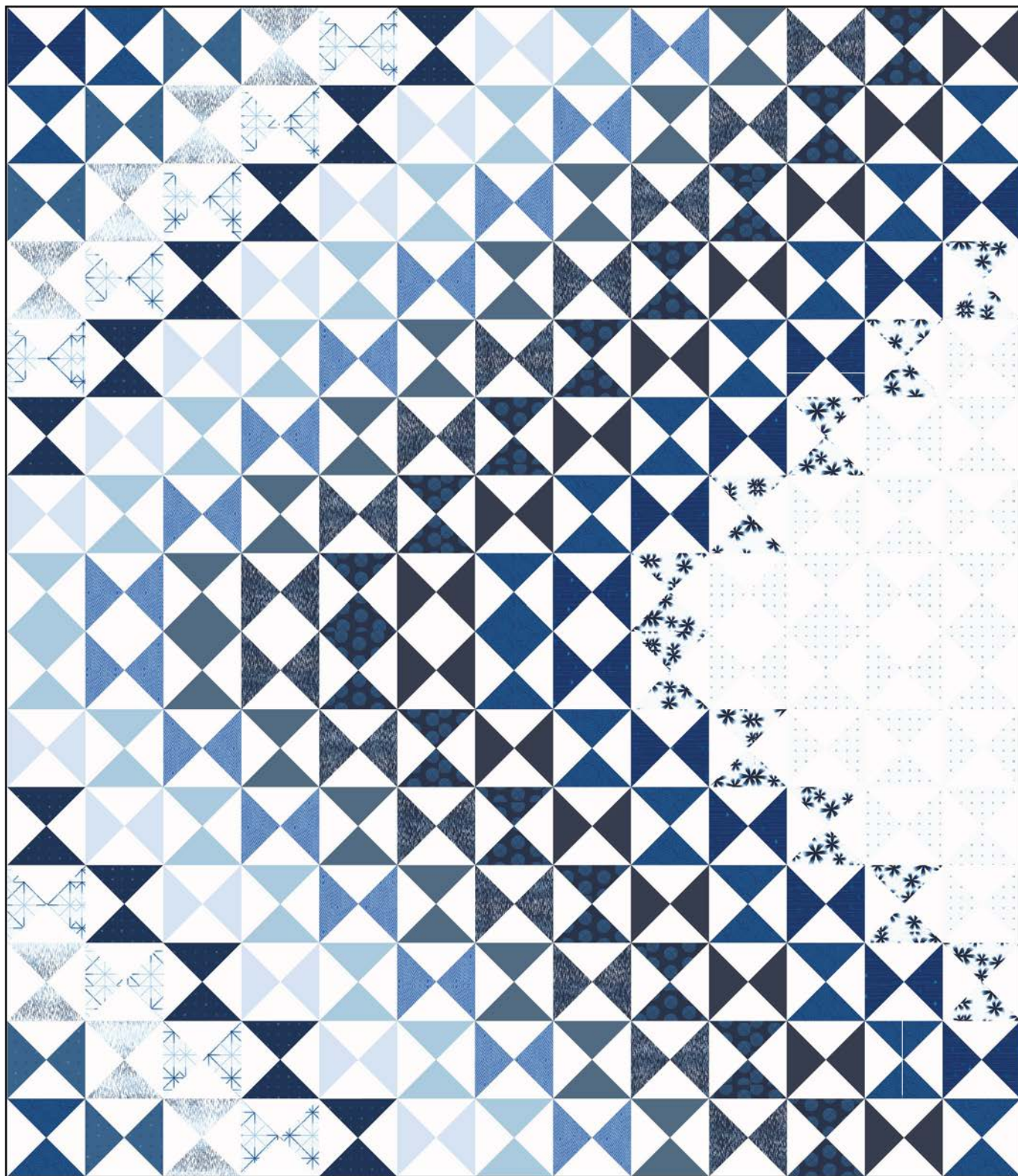


DIAGRAM 19

## QUILT ASSEMBLY

*Sew rights sides together.*

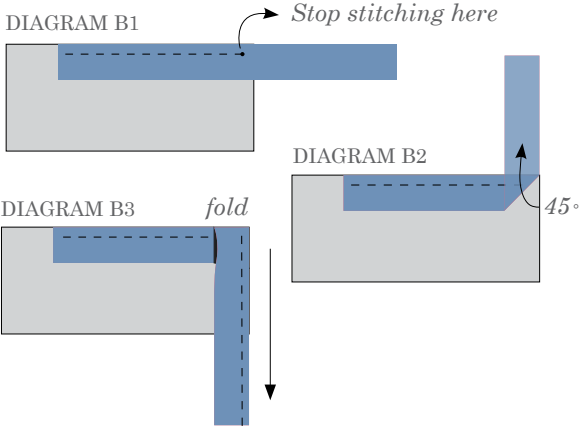
- Place BACKING FABRIC on a large surface wrong side up. Stretch it with masking tape against that surface.
- Place BATTING on top of backing fabric.
- Place TOP on top of the batting with right side facing up. Smooth away wrinkles using your hands.
- Pin all layers together and baste with basting thread, using long stitches. You can also use safety pins to join the layers.
- Machine or hand quilt starting at the center and working towards the corners. Remember that quilting motifs are a matter of personal preference. Have fun choosing yours!
- After you finished, trim excess of any fabric or batting, squaring the quilt to proceed to bind it.

## BINDING

*Sew rights sides together.*

- Cut enough strips  $2\frac{1}{2}$ " wide by the width of the fabric **Q** to make a final strip 346" long. Start sewing the binding strip in the middle of one of the sides of the quilt, placing the strip right side down and leaving an approximated 5" tail. Sew with  $\frac{1}{4}$ " seam allowance (using straight stitch), aligning the strip's raw edge with the quilt top's raw edge.
- Stop stitching  $\frac{1}{4}$ " before the edge of the quilt (DIAGRAM B 1). Clip the threads. Remove the quilt from under the machine presser foot. Fold the strip in a motion of  $45^\circ$  and upward, pressing with your fingers (DIAGRAM B2). Hold this fold with your finger, bring the strip down in line with the next edge, making a horizontal fold that aligns with the top edge of the quilt (DIAGRAM B3). Start sewing at  $\frac{1}{4}$ " of the border, stitching all the layers. Do the same in the four corners of the quilt.

- Stop stitching before you reach the last 5 or 6 inches. Cut the threads and remove the quilt from under the machine presser foot. Lay the loose ends of the binding flat along the quilt edge, folding the ends back on themselves where they meet. Press them together to form a crease. Using this crease as the stitching line, sew the two open ends of the binding with right sides together (you can help yourself marking with a pencil if the crease is difficult to see).
- Trim seam to  $\frac{1}{4}$ " and press open. Complete the sewing. Turn binding to back of the quilt, turn raw edge inside and stitch by hand using blind stitch.



- If you are using our 2.5 edition (binding fabric), click or scan this QR code to see a tutorial on how to use this specialty fabric.





XX

*Congratulations  
& enjoy*

XX



[artgalleryfabrics.com](http://artgalleryfabrics.com)

NOTE: While all possible care has been taken to ensure the accuracy of this pattern, We are not responsible for printing errors or the way in which individual work varies.

Please read instructions carefully before starting the construction of this quilt. If desired, wash and iron your fabrics before starting to cut.

© 2024 Courtesy of Art Gallery Quilts LLC. All Rights Reserved.