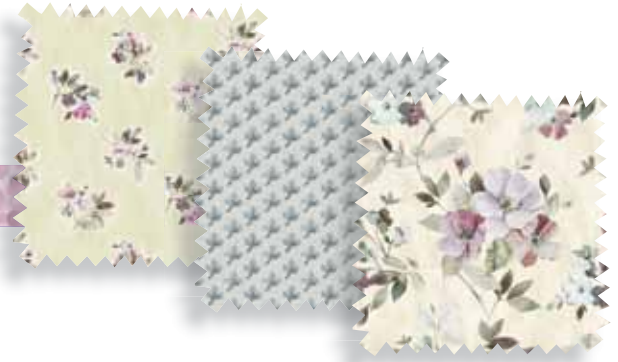


Jasmine's Garden

Quilt Design by Gina Gempesaw



Quilt size: approximately 70" x 90"

Featuring fabrics from
Jasmine's Garden by P&B Textiles



P&B Textiles • pbtex.com • 800-351-9087 • 208 Clock Tower Square, Portsmouth, RI 02871

Jasmine's Garden

Fabric collection by P&B Textiles

Quilt designed by Gina Gempesaw

Skill level: Confident Beginner • Finished Quilt Size: approximately 70" x 90"

Quilt Yardages:

Fabric A: JASG 3094 MU	2 1/4 yards
Fabric B: JASG 3096 E	1 1/8 yards
Fabric C: JASG 3097 B	1 1/4 yards
if border is pieced OR 2 1/2 yards continuous LOF border	
Fabric D: JASG 3098 B	1/2 yard
Fabric E: SUEM 300 EB	2 1/2 yards
Fabric F: SUE6 302 T	1 yard
Backing: JASG 3098 B suggested	5 1/2 yards
Batting:	78" x 98"

Cutting Instructions:

Please read all instructions carefully before beginning. Strips are cut across the width of fabric unless otherwise stated. All seams are sewn with a 1/4" seam unless otherwise stated. LOF = length of fabric. Label all pieces. Experience with mitering borders required. Use your favorite method for paper-piecing. Recommended cutting sizes for Paper-Piecing are included in the cutting list.

From Fabric A:

1. Cut two 12 1/2" strips. Sub cut six 12 1/2" squares (A1).
2. Cut two 18 1/4" strips. Sub cut three 18 1/4" squares. Cut each square on the diagonal twice to get a total of twelve triangles (A2). Use 10 of the triangles in the quilt and discard two.
3. Recut leftover 18 1/4" strip to 9 3/8". Sub cut two 9 3/8" squares. Cut each square on the diagonal once to get a total of four triangles (A3).

From Fabric B:

1. Cut five 6 7/8" strips. Then, cut twenty-four 6 7/8" squares. Cut each square diagonally once to get a total of forty-eight triangles (B).

From Fabric C:

1. If Border is pieced, cut (8) 4 1/2" strips. Sew strips together into one long strip. OR If Border is continuous, cut (4) 4 1/2" x LOF strips.
 - a. cut two 4 1/2" x 82 3/4" Second Border strips (C1) and
 - b. cut two 4 1/2" x 70 7/8" Second Border strips (C2).

From Fabric D:

1. Cut two 6 1/2" strips. Sub cut twelve 6 1/2" squares (D).

From Fabric E:

1. Cut five 7 1/4" strips. Sub cut twenty-four 7 1/4" squares. Cut each square on the diagonal twice to get a total of ninety-six triangles (E1).
2. Cut two 2 1/2" strips. Sub cut seventeen 2 1/2" squares for cornerstones (E2).
3. Cut one 4 1/8" strip. Sub cut four 4 1/8" squares. Cut each square on the diagonal twice to get a total of sixteen

triangles (E3). Use 14 of the triangles in the quilt and discard two.

4. Cut eight 2" strips. Sew strips together end-to-end into one long strip.
 - a. sub cut two 2" x 79 3/4" First Border strips (E4); and
 - b. sub cut two 2" x 62 7/8" First Border strips (E5).
5. Cut nine 2 1/4" strips for binding (E6).

From Fabric F:

1. Cut eleven 2 1/2" strips. Sub cut thirty-two 2 1/2" x 12 1/2" sashing strips (F).

Piecing Instructions:

A. Block

1. Center and sew one E1 triangle along one edge of a D square, right sides together, as shown in Figure 1. Press.



Figure 1

2. Repeat for the remaining 3 sides of the D square to complete a DE square (Figure 2). Press.



Figure 2

3. Center and sew one B triangle along one edge of a DE square, right sides together, as shown in Figure 3. Press.

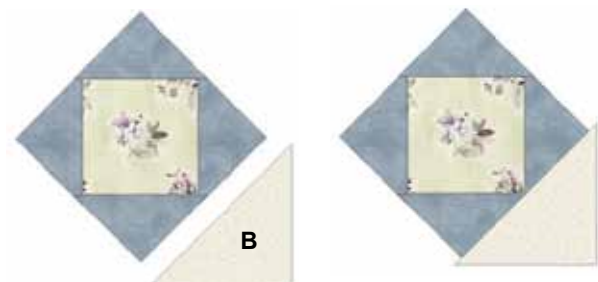


Figure 3

4. Repeat for the remaining 3 sides of the DE square to complete a block (Figure 4). Press. It should measure ?" x ?".
5. Make a total of twelve blocks.



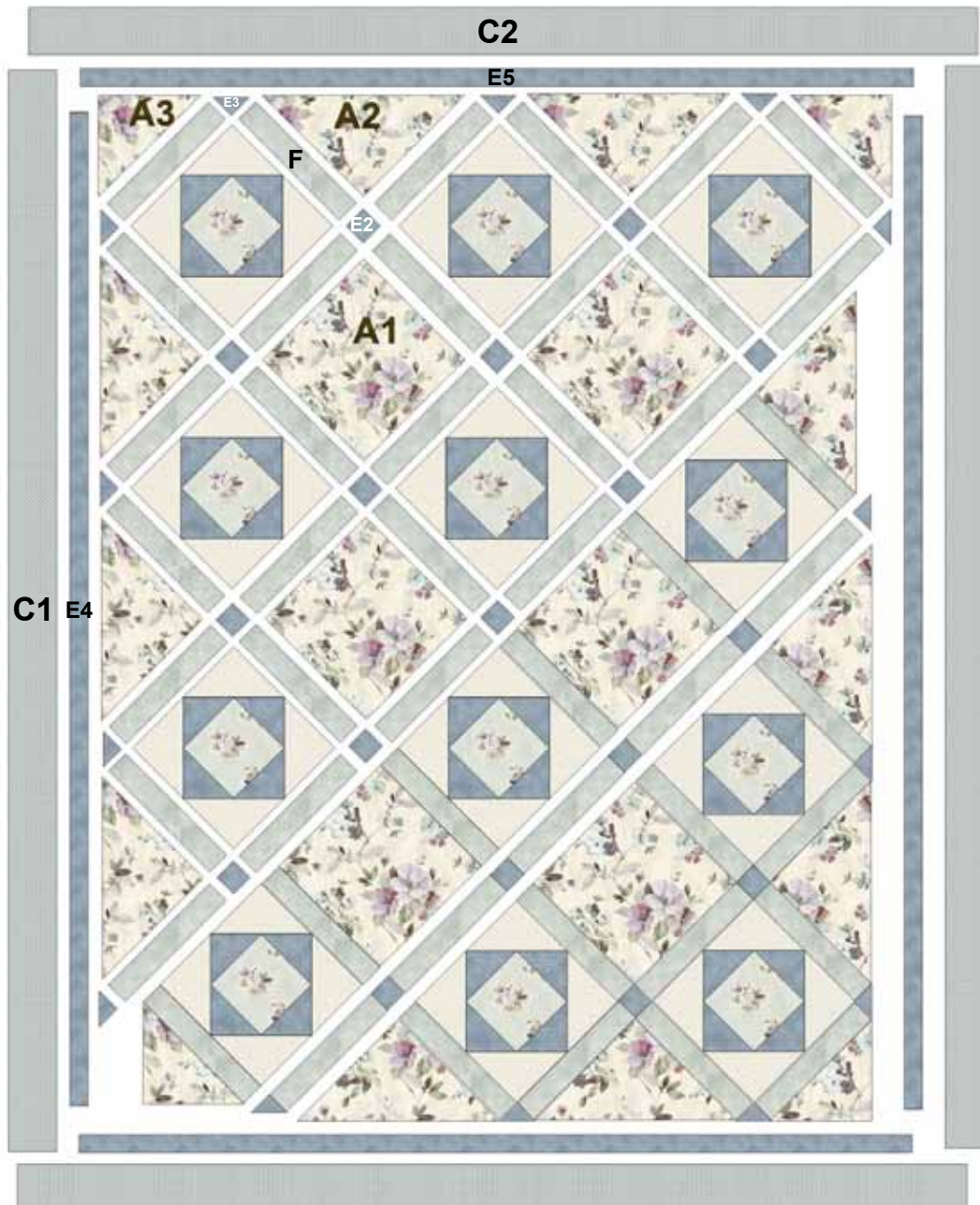
Figure 4

Quilt Assembly: Refer to Quilt Diagram.

1. Layout twelve Blocks, six A1 Squares, forty-eight F Sashing Strips, seventeen E2 Cornerstones, twelve E3 Triangles, ten A2 Triangles and four A3 Triangles as shown in the quilt layout diagram.
2. Sew blocks within each diagonal row together. Press. Sew rows together to complete the center of the quilt. Press. It should measure about 59 7/8" x 79 3/4".
3. First Border: Sew one E4 strip to each side of the quilt. Press. Then, sew one E5 strip to the top and bottom of the quilt. Press. The quilt should measure 62 7/8" x 82 3/4".
4. Second Border: Sew one C1 strip to each side of the quilt. Press. Then, sew one C2 strip to the top and bottom of the quilt. Press. The quilt should measure 70 7/8" x 90 3/4".

Finishing:

1. Prepare backing to measure 79" x 99" with a horizontal seam. Press seam open.
2. Layer backing, batting and quilt top. Baste layers together.
3. Quilt as desired.
4. Trim layers even with top.
5. Join nine 2 1/4" E6 binding strips with diagonal seams. Press seams open. Press strip in half lengthwise with wrong sides together to make double-fold binding. Sew binding to quilt using your favorite method.
6. Make a label and sew to back of the quilt.



Quilt Diagram

Jasmine's Garden

Fabric Collection by P&B Textiles



JASG 3094 MU*



JASG 3095 P



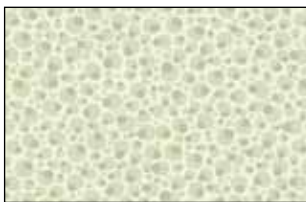
JASG 3098 A



JASG 3098 B*†



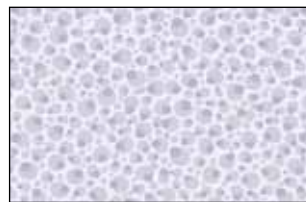
JASG 3098 P



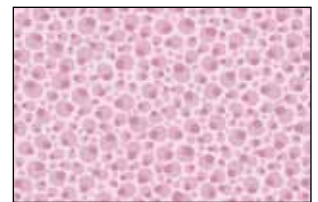
JASG 3096 A



JASG 3096 E*



JASG 3096 L



JASG 3096 P



JASG 3097 B*



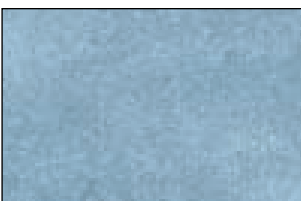
JASG 3097 G



JASG 3097 R



SUE6 302 LT*



SUEM 300 EB*