



Tilda®

Kitschy Friends

Kitschy Friend

This fun lady will always raise a smile, especially if you give her as a gift to your friends. We chose certain fabrics, with details given in the instructions, but you can easily replace these fabrics with others from the Tilda ranges. The fabric amounts given are enough for one doll.

Materials

- Fabric 1: width of fabric x 12in (30cm) – Nancy blue (100160)
- Fabric 2: 14in x 15¾in (35cm x 40cm) – Shirly red (100145)
- Fabric 3: 21in x 7in (54cm x 18cm) – Shirly dove white (100148)
- Fabric 4: 14in x 4¾in (35cm x 12cm) – Solid sky teal (120023)
- Fabric 5: 21in x 9½in (54cm x 24cm) – Doll fabric (140001)
- Embroidery thread in mid blue (DMC stranded cotton (597), 1½ yards (1.5 metres)
- Fibrefill 4oz (100g)
- Matching thread and a long sewing needle for hand sewing
- Flower stick or chopstick for turning and stuffing
- Thick paper for copying patterns
- Erasable marker, such as a disappearing-ink pen
- Black hobby paint and a small-headed metal pin for eyes
- Lipstick or rouge for cheeks

Finished Size

Approximately 23½in (60cm) tall

Making the Doll

1 Refer to the bullet points below on making the project before you start. Copy all the pattern pieces onto thick paper and cut out the shapes. Read all the project instructions through before you start. The fabrics used are shown in **Fig A**.

- Use thick paper for copying patterns.
- The outer line on a pattern is the sewing line (generally, no seam allowances are included).
- When sewing the seams, reduce your stitch length to 1.5mm–1.6mm.
- Unless otherwise instructed, sew on the outer line of the pattern and then cut out the shapes *after* sewing, cutting ⅛in–¼in (3mm–6mm) outside the sewn line.
- To get a good shape, cut snips in the seam allowance where seams curve tightly inwards.
- Stuff well, using a stick to fill small areas.
- Sew up gaps with matching thread and small slipstitches.

Fig A



2 Body: For the front of the body from Fabric 1 cut a piece 6in x 12in (15.2cm x 30cm) and from Fabric 5 (doll fabric) cut a piece 4½in (11.4cm) square. With reference to **Fig B**, sew the doll fabric centrally to the top of the print fabric using a ¼in (6mm) seam. Press the seam open. Place the body pattern against the right side of the pieced fabric, lining up the dotted line across the neck on the pattern with the seam between the fabrics. Mark the shape using an erasable marker, such as a disappearing-ink pen. Use the same marker to mark the placement of the headscarf on the doll fabric – this is shown by dotted lines on the pattern and in **Fig B**. Alternatively, you could mark carefully with a thin pencil.

Fig B



3 From Fabric 3, cut two 2½in x 4in (6.5cm x 10.2cm) pieces for the headscarf. Place one of the pieces right side down on the doll fabric head, angled as in **Fig C**, and sew it on so that the seam is on the headscarf line. Fold the piece back and press into place. Now place the second headscarf piece right side down on the other side of the head, as in **Fig D**. Sew it in place as before. Fold it back and press it into place (**Fig E**).

Fig C



Fig D



Fig E



4 For the back of the body from Fabric 1 cut a piece 6in x 12in (15.2cm x 30cm) and from Fabric 3 (headscarf fabric) cut a piece 6in x 4¼in (15.2cm x 10.8cm). With reference to **Fig F**, sew the Fabric 3 piece to the top of Fabric 1 using a ¼in (6mm) seam. Press the seam open.

Fig F



5 Place the front of the body and the back of the body right sides together with the wrong side of the front facing up as in **Fig G**. Re-trace the body pattern, making sure the neck seams line up with the dotted lines in the pattern. Now sew around the body, leaving the bottom open.

Fig G



6 Cut out the body. Snip notches where the seams turn inwards, and in any seam allowances caught in a seam. Turn the body through to the right side and fold in the extra seam allowance at the bottom before pressing. Stuff the body with help of a wooden stick or similar tool.

7 Legs: For the legs, cut an 11¾in (30cm) square of Fabric 2. For the shoes, cut an 11¾in x 4¾in (30cm x 12cm) piece of Fabric 4. Using a ¼in (6mm) seam, sew the blue fabric to the bottom of the print fabric and press the seam open. Fold and press the pieced fabric in half along the length, right sides together, and trace the two legs onto the fabric, matching the

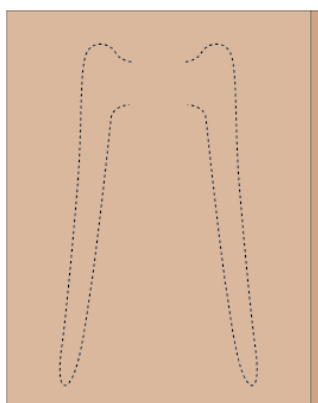
dashed ankle line on the pattern with the seam. Sew around the legs, leaving the tops open (**Fig H**). Cut out and turn the legs to the right side with the help of a flower stick or similar tool and then press. Stuff the legs with the help of the flower stick.

Fig H



8 Arms: Use the remaining piece of Fabric 5 (doll fabric) for the arms. Fold the fabric right sides together, trace the arms and then sew as in **Fig I**. Turn through using the flower stick and fold in the extra seam allowance before pressing. Stuff the arms with the help of the stick.

Fig I



9 Pin the opening on the arms over the shoulders and stitch them in place. Place the extra seam allowance on the legs inside the body opening and pin. Now stitch the opening shut while at the same time fastening the legs into position (**Fig J**).

Fig J

10 Dress: From Fabric 1, cut a 2in x 7in (5cm x 18cm) strip for the dress ruffle (this includes a seam allowance). Press over the top short side (wrong sides together) by about $\frac{1}{4}$ in (6mm) (**Fig K**). Fold and press in $\frac{5}{8}$ in (1.6cm) on each long side so that the strip becomes $\frac{3}{4}$ in (2cm) wide. Using a strong thread, hand stitch a running stitch along the middle of the strip (**Fig L**). Pull up the thread to create gathers and so the ruffle is about $2\frac{3}{4}$ in (7cm) high. Pin the ruffle onto the doll's upper chest and fasten with a few stitches (**Fig M**).

Fig K**Fig L****Fig M**

11 From Fabric 1 for the dress skirt cut a piece $11\frac{1}{2}$ in (29.2cm) wide x 11in (28cm) – this includes a $\frac{1}{4}$ in (6mm) seam on each side and an extra seam allowance of $\frac{1}{2}$ in (1.3cm) on the top and bottom. Fold the piece in half right sides together so that it's $5\frac{3}{4}$ in (14.6cm) wide. Using a $\frac{1}{4}$ in (6mm) seam, sew together along the long side. Fold and press in the larger seam allowance around the opening at the top and the bottom and then sew the hem at the bottom (**Fig N**).

Fig N



12 Turn the skirt to the right side and make sure the seam is at the centre back before pressing. Put the skirt on the doll and place it quite high so that the end of the ruffle is covered. Make two folds in the front and two in the back, so that the skirt is tight around the upper waist/torso, pinning as you go. Stitch the skirt onto the doll (**Fig O**).

Fig O



13 For the sleeves, from Fabric 1 cut two pieces $2\frac{1}{4}$ in high x $4\frac{1}{2}$ in wide (5.7cm x 11.4cm) (these cut sizes include a $\frac{1}{4}$ in (6mm) seam allowance all round). Fold the sleeves right sides together so they are $2\frac{1}{4}$ in (5.7cm) wide and sew the seam along the open edge. Fold and press in the seam allowance at the top and bottom before turning the sleeves to the right side. Stitch a running stitch along the top hem and then slip the sleeve onto the doll's arm so it covers the shoulder. Pull up the running thread to create gathers around the shoulder area and then fasten

the sleeve in place with a few stitches. Sew along the lower hem on the sleeve and pull the thread to create gathers before fastening the thread. Repeat this sewing and gathering with the other sleeve (**Fig P**).

Fig P



14 Flower: From Fabric 2 cut a piece about 8in x 4in (20.3cm x 10.2cm). Fold it in half, right sides together, and trace the flower on the fabric. Sew all the way around and cut out the shape. Cut notches in the seam allowance between the petals. From Fabric 4 for the flower centre, cut a piece about 3in x 4½in (7.6cm x 11.4cm). Fold it in half, right sides together, and trace the circle on the fabric. Sew all the way around and cut out the shape.

15 On the flower and circle shapes, snip an opening through one fabric layer and turn through to the right side. Press, add a small amount of stuffing to both shapes and then press again. With the slits at the back, sew the circle onto the centre of the flower.

16 Headscarf: From Fabric 3 cut a piece about 5in x 7in (12.7cm x 18cm). Fold it in half along the length, right sides together, and trace the scarf pattern on the fabric. Sew around, leaving an opening as shown on the pattern. Cut out and turn through with the help of a flower stick or similar tool. Fold in the seam allowance at the opening and press. Tie a knot in the middle – this will also hide the turning opening.

Finishing Off

17 Use a disappearing-ink pen or thin pencil to draw the hair on the doll and a pair of funny glasses, as indicated in the pattern. Stitch the hair with the embroidery yarn and long straight stitches close together. Use normal sewing thread to stitch the glasses – we used red thread and two lines of running stitch or back stitch (**Fig Q**).

18 To make a face, we suggest using black hobby paint for eyes and a little lipstick or rouge and a dry brush for blushed cheeks. Mark the eyes just with pins first and then apply rosy cheeks with a dry brush and a little rouge or lipstick. Dip the head of a small metal-headed pin, about ¼in (3mm–4mm) diameter, in paint and then stamp eyes on the doll. Sew the flower in place on the doll and then sew the headscarf in place to finish (**Fig R**).

Fig Q

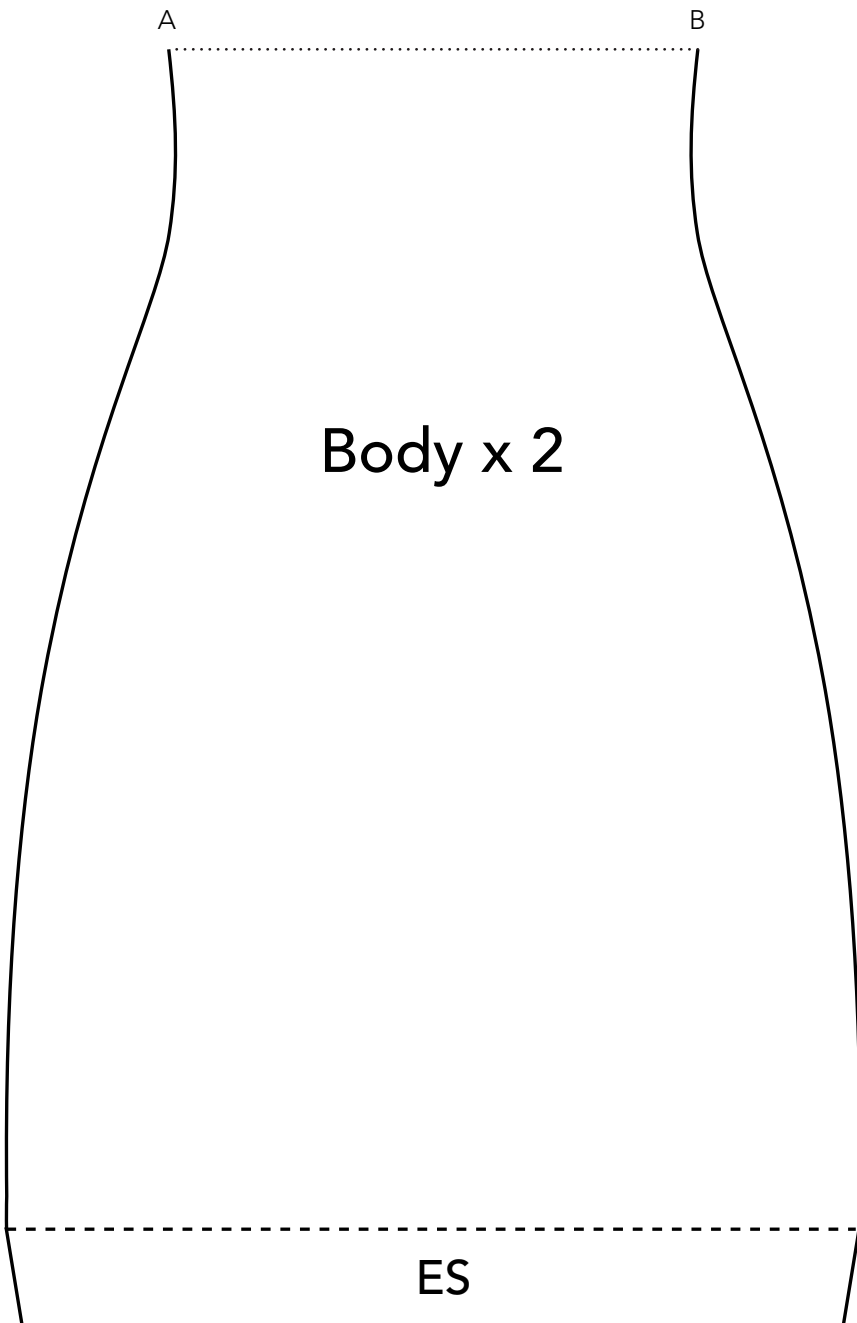
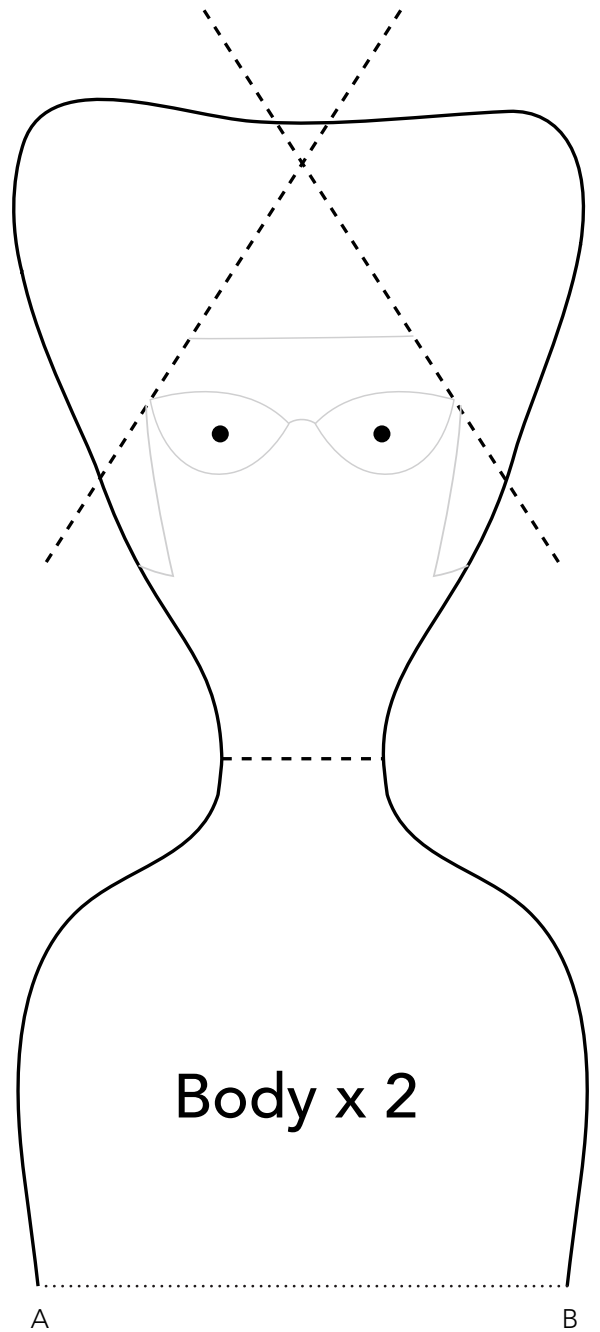


Fig R

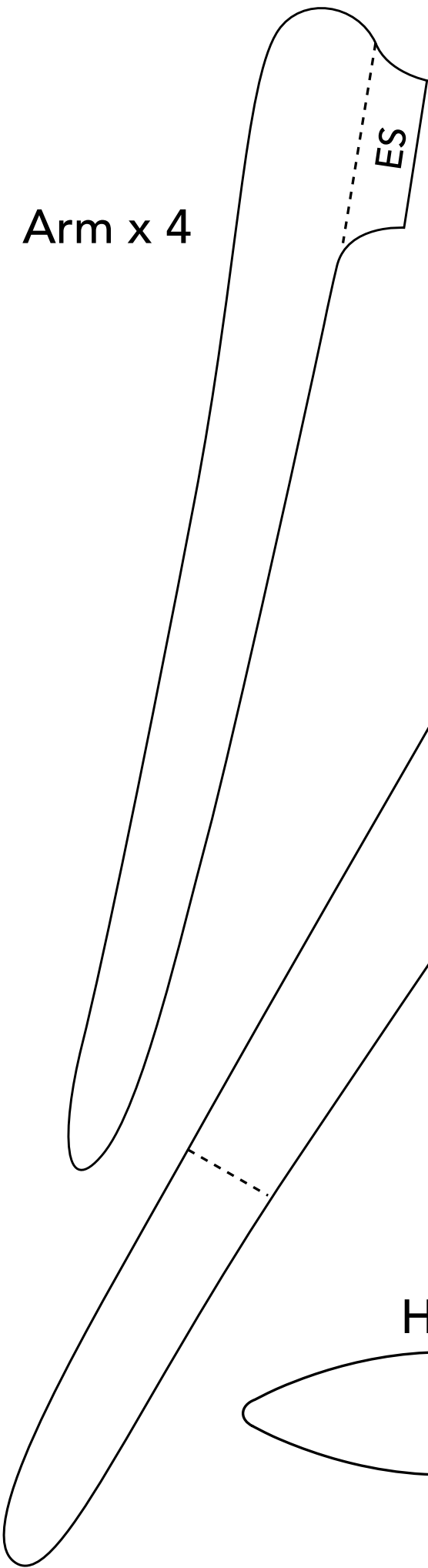


Pattern Kitschy Friends

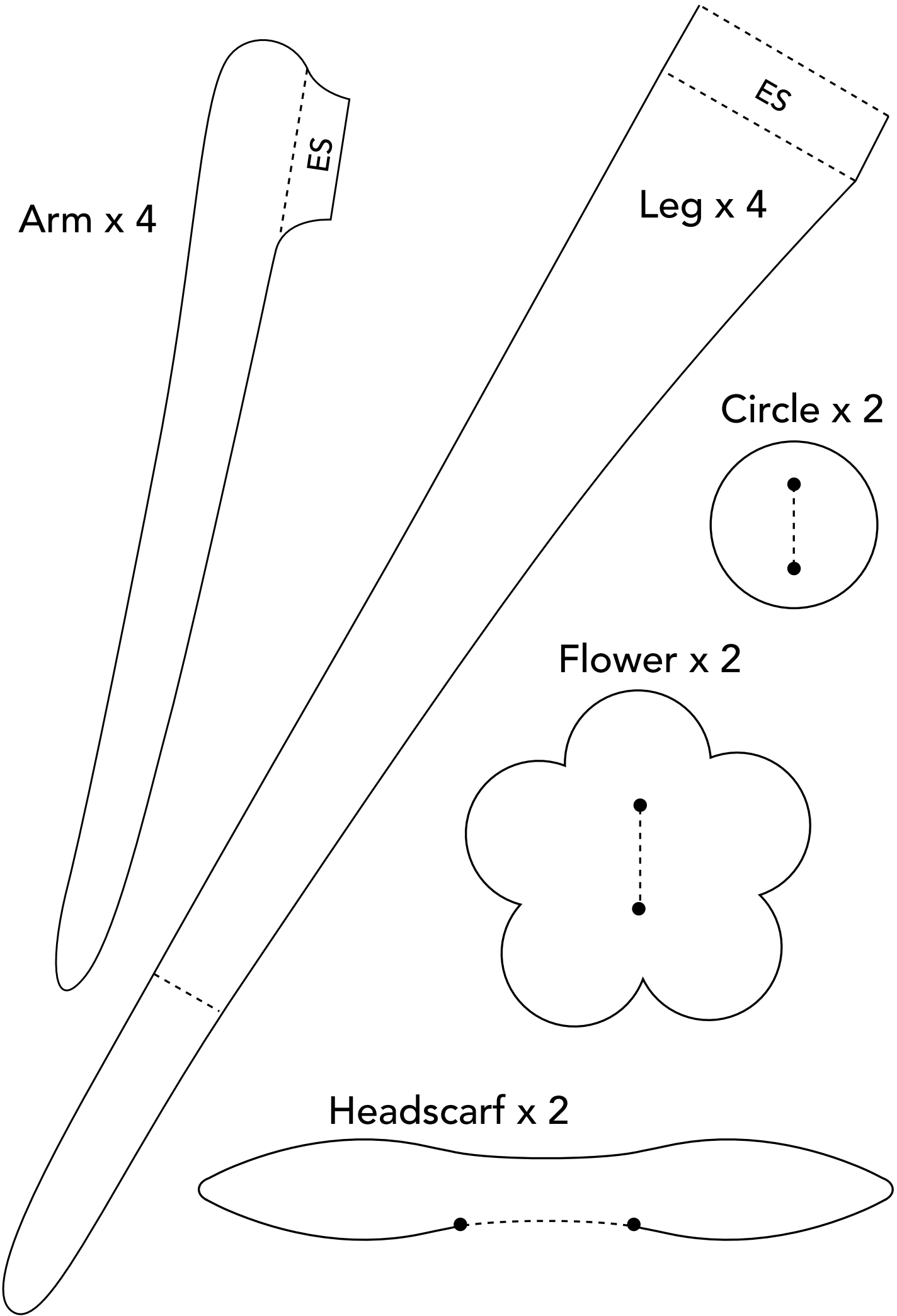
Make sure to print at 100%



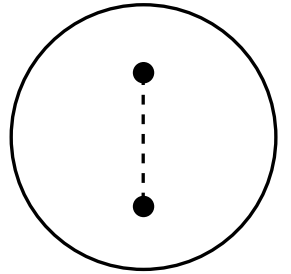
Arm x 4



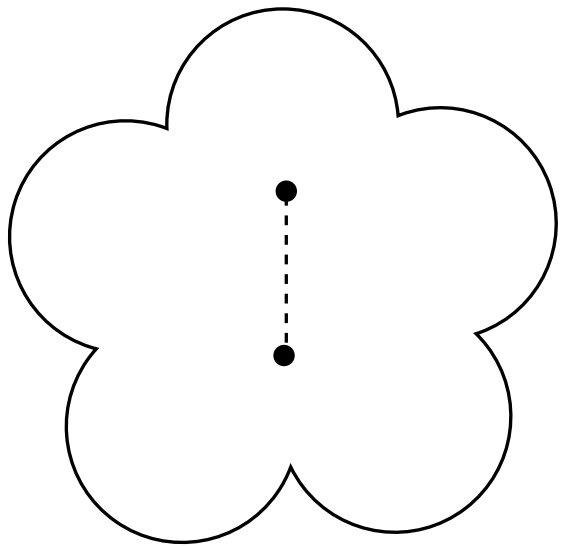
Leg x 4



Circle x 2



Flower x 2



Headscarf x 2

