

Leather & Lace AND Amazing Grace

BY CATHE HOLDEN

LEATHER & LACE STARS

STOCK # PS7400 1



© moda fabrics 2022 • all rights reserved

Finished Size 64" x 76"

moda
FABRICS + SUPPLIES®

CUTTING WOF = Width of Fabric, measured from selvage to selvage

When you square up your fabric, trim sparingly to make sure you get all the pieces you need!



**7400 11
FABRIC A**

Cut (5) 8¼" x WOF strips. From these strips, subcut (20) 8¼" x 8¼" squares.



**7404 11
FABRIC B**

Cut (5) 8¼" x WOF strips. From these strips, subcut (20) 8¼" x 8¼" squares.

From the remaining yardage, cut (6) 1½" x WOF strips.



**7403 13
FABRIC C**

Cut (1) 8¼" x WOF strip. From this strip, subcut (4) 8¼" x 8¼" squares.

Cut (2) 3½" x WOF strips. From these strips, subcut (16) 3½" x 3½" squares.

Cut (8) 2¼" x WOF strips for binding.



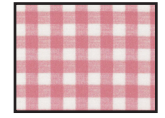
**7406 13 -
FABRIC D**



**7405 12 -
FABRIC E**



**7404 13 -
FABRIC F**



**7402 12 -
FABRIC G**

Cut the following for each of the (4) remaining pink fabrics:

Cut (1) 8¼" x WOF strip. From this strip, subcut (4) 8¼" x 8¼" squares.

Cut (2) 3½" x WOF strips. From these strips, subcut (16) 3½" x 3½" squares.

Cut (2) 7½" x WOF strips.

If not using triangle papers, cut each 8¼" square down to (4) 4" squares, and proceed to make 2-at-a-Time HST's in the standard fashion, trimming to 3½" (to finish at 3" once all sewn together).

ASSEMBLY Use a scant ¼" seam allowance. Press seams open unless noted otherwise.

MAKE HALF SQUARE TRIANGLES (HST's) & BLOCKS

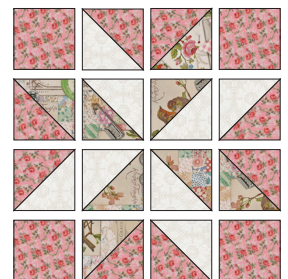
When sewing using foundation papers, reduce your stitch length to approx. 1.2-1.5 to ease paper removal.

1. Pair up (10) 8¼" squares each of Fabrics A and B. Following the instructions on the triangle papers, align the fabrics Right Sides Together with a sheet of triangle paper on top and pin to secure.
2. With a reduced stitch length, sew along the stitch lines on the paper. Then cut on the cut lines, and remove papers. Press seams to Fabric A, and trim dog ears. You will end up with (80) 3½" Fabric A & B HST's.
3. For each pink print (Fabrics C thru G), pair (2) 8¼" squares with Fabric A, and (2) 8¼" squares with Fabric B.

4. Repeat the triangle paper process, pressing seams toward Fabrics C thru G. For each pink print, this makes (16) 3½" HST's with Fabric A, and (16) 3½" HST's with Fabric B.

5. Once you've prepped all the HST's, assemble your star blocks following layout below, making sure each pink fabric appears in (4) blocks.

6. Join units together into rows, and then join the rows together to make blocks. Press seams open. Block will measure 12½" x 12½" at this stage.



PREPARE BORDERS & BINDING

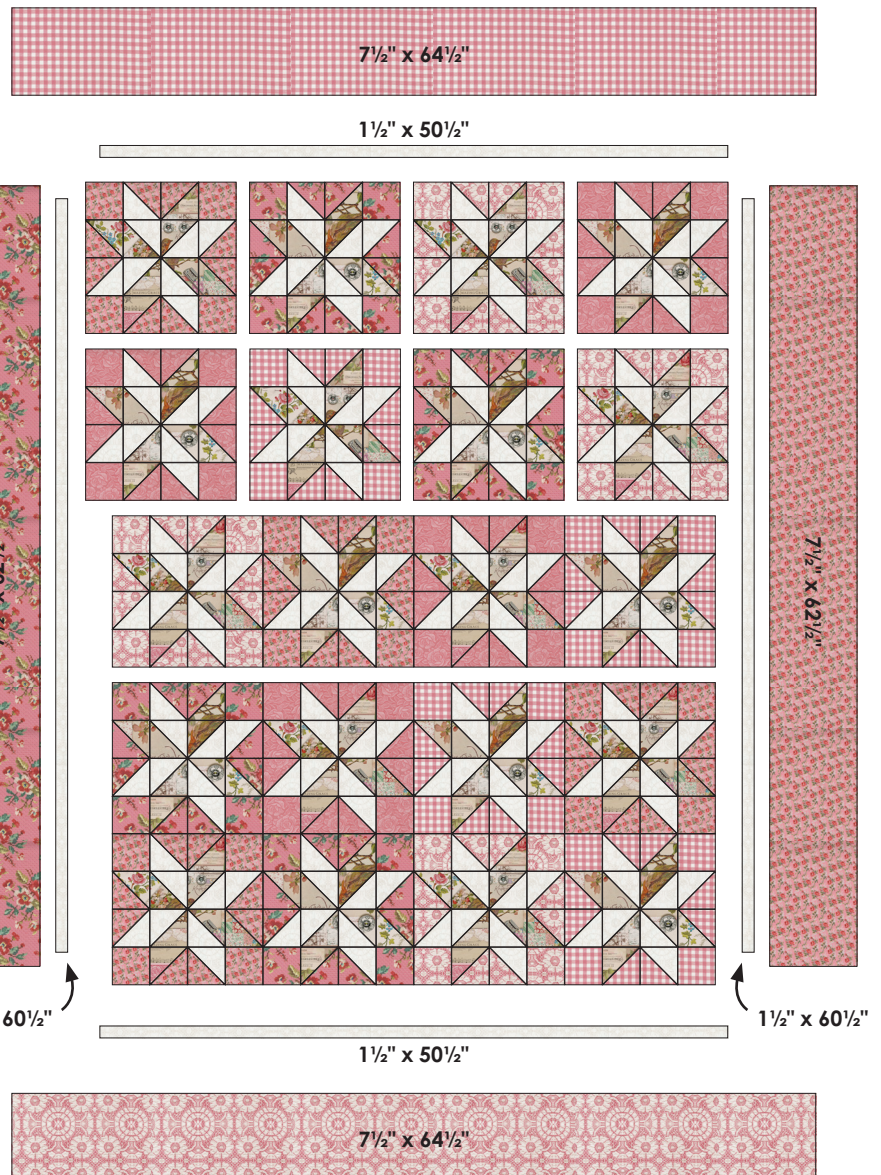
1. Join the (6) $1\frac{1}{2}$ " x WOF strips of Fabric B together end to end to create one long strip for the INNER BORDER. Press seams open. Subcut (2) $1\frac{1}{2}$ " x $60\frac{1}{2}$ " strips for side inner borders. Subcut (2) $1\frac{1}{2}$ " x $50\frac{1}{2}$ " strips for top & bottom inner borders.
2. For Fabrics D thru G, join the (2) $7\frac{1}{2}$ " x WOF strips together end to end for scrappy outer borders. Trim long strips of Fabrics D and F

down to $7\frac{1}{2}$ " x $62\frac{1}{2}$ " for side outer borders. Trim long strips of Fabrics E and G down to $7\frac{1}{2}$ " x $64\frac{1}{2}$ " for top and bottom outer borders.

3. Join your (8) $2\frac{1}{4}$ " x WOF binding strips end to end to create one long strip. Press seams open. Fold in half longways, wrong sides together, and set fold with iron. Side aside to attach after you've finished quilting.

FINISHING

1. Arrange your blocks into 5 rows of 4 blocks each, making sure you're happy with the arrangement of the blocks. Use larger image on front of pattern as a reference if needed.
2. Sew blocks together into rows. Press seams open. Then, join rows together, pressing seams open.
3. Attach the (2) $1\frac{1}{2}$ " x $60\frac{1}{2}$ " side inner border strips to either side of quilt center. Press seams toward border. Attach the (2) $1\frac{1}{2}$ " x $50\frac{1}{2}$ " top & bottom inner border strips to either side of quilt center. Press seams toward border.
4. Attach the (2) $7\frac{1}{2}$ " x $62\frac{1}{2}$ " side outer border pieces to either side of quilt center. Press seams toward border. Attach the (2) $7\frac{1}{2}$ " x $64\frac{1}{2}$ " top & bottom outer border pieces to either side of quilt center. Press seams toward border.
5. And then...



BASTE, QUILT, BIND & ENJOY!

Leather & Lace AND Amazing Grace BY CATHE HOLDEN

#LeatherLaceAndAmazingGraceFabric
#ModaFabrics

FABRIC REQUIREMENTS



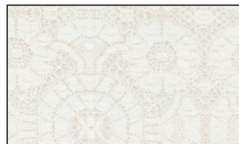
7400 11
1 1/4 YARD
Blocks



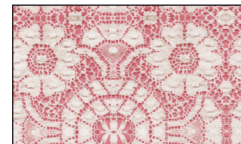
7402 12
7/8 YARD
Blocks & Border



7403 13
1/2 YARD - Blocks
5/8 YARD - Binding
***1 Yard if using single cut of fabric**



7404 11
1 5/8 YARD
Blocks & Border



7404 13
7/8 YARDS
Blocks & Border



7405 12
7/8 YARDS
Blocks & Border

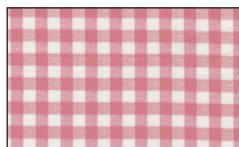
LEATHER & LACE STARS

Finished Size 64"x76"

STOCK # PS7400 1

Follow Cathe Holden
on Instagram
[@catheholden](https://www.instagram.com/catheholden)
for more fabrics,
crafting, and vintage
inspiration.

**Pattern available as
a Moda boxed kit,
including triangle papers
(KIT7400). Ask at your
local fabric shop!**



7406 13
7/8 YARDS
Blocks & Border

Backing Fabric: 4 yards

RECOMMENDED



STOCK #SS030
**STAR SINGLES 3" HALF SQUARE TRIANGLE
PAPER PAD by Spinning Star Design**
30 SHEETS NEEDED

© moda fabrics 2022
all rights reserved

modafabrics.com



@modafabrics

