



## Moontide Quilt 1

Designed and made by Sally Ablett

Size of quilt 58" x 70" - unfinished block size

6½" x 6½"

## Requirements

- Fabrics from the Moontide collection
1. A620.1 - Moontide mermaids on pink with gold metallic - fat $\frac{1}{4}$
  2. A624.1 - Rays on eau de nil with silver metallic bubbles - fat $\frac{1}{4}$
  3. A624.2 - Rays on blue with silver metallic bubbles - fat $\frac{1}{4}$
  4. A623.3 - Silver metallic under the sea on blue - fat $\frac{1}{4}$
  5. A623.2 - Silver metallic under the sea on turquoise - fat $\frac{1}{4}$
  6. A622.2 - Eau de nil mermaids with silver metallic bubbles - fat $\frac{1}{4}$
  7. A622.1 - Pink mermaids with gold metallic bubbles - fat $\frac{1}{4}$
  8. A621.2 - Silver metallic octopus on lilac - fat $\frac{1}{4}$
  9. A621.1 - Gold metallic octopus on eau de nil - fat $\frac{1}{4}$
  10. A620.2 - Moontide mermaids on aqua with gold metallic - fat $\frac{1}{4}$
  11. A619.2 - Mellow blues wave ombre - 1 $\frac{1}{2}$ yds - 1.40m
  12. BB290 - Tropics blue -  $\frac{5}{8}$ yd - 60cm
  13. BB302 - Neptune blue - 1 $\frac{1}{2}$ yds - 1.50m

Wadding and backing 62" x 74"

All measurements include  $\frac{1}{4}$ " seam allowances; press each seam as you go.

You need to join your fabric to get the length for the border strips.

### Cutting

From each of the fabrics 1, 3, 5, 7 and 9 cut 4 x 6 $\frac{7}{8}$ " x 6 $\frac{7}{8}$ " cut in half diagonally once from top left to bottom right

From each of the fabrics 2, 4, 6, 8 and 10 cut 4 x 6 $\frac{7}{8}$ " x 6 $\frac{7}{8}$ " cut in half diagonally once from bottom left to top right

From fabric 11 cut

20 x 7 $\frac{1}{4}$ " x 7 $\frac{1}{4}$ " cut in half diagonally twice  
36 x 2 $\frac{1}{2}$ " x 5 $\frac{7}{8}$ "

2 x 4 $\frac{7}{8}$ " x 4 $\frac{7}{8}$ " cut in half diagonally once  
From fabric 12 cut

36 x 2 $\frac{1}{2}$ " x 5 $\frac{7}{8}$ "

2 x 4 $\frac{7}{8}$ " x 4 $\frac{7}{8}$ " cut in half diagonally once  
From fabric 13 cut

7 x 1 $\frac{1}{2}$ " x 42"

20 x 7 $\frac{1}{4}$ " x 7 $\frac{1}{4}$ " cut in half diagonally twice

## Making up the blocks

Block 1: Lay out the fabric pieces for the block. Sewing the two small triangles together and then stitch this to your larger triangle to make a square. For each colour way you will have 4 in total of block 1

Block 2: This is made up as block 1 but your large triangle will be on the left side again 4 of each colour way.

Block 3: The large triangle this time will be in the top right corner, as before made up in the same way. 4 of each colour way.

Block 4: On block 4 the large triangle will be on the top left side and made up as before. In total 4 of each colour way.

Complete the quilt centre

Lay out all the blocks as in the main diagram. Stitch in rows pressing the seams in the opposite way each time. This will help when you are sewing the rows together.

### Block 1

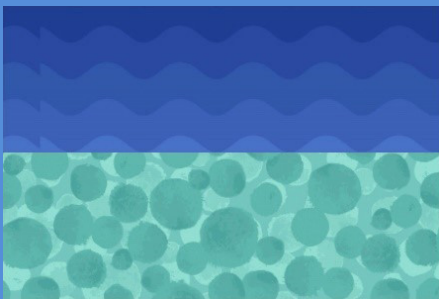
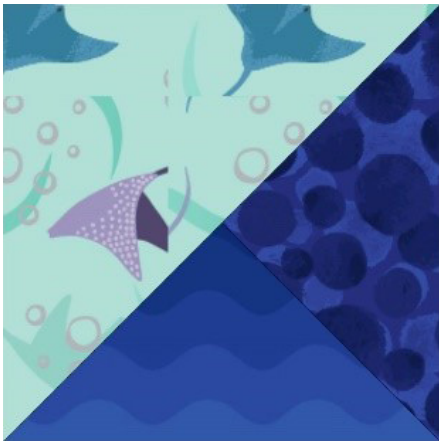


### Block 2

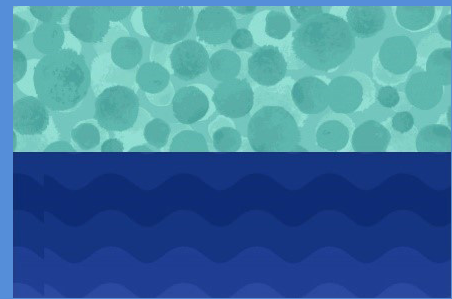
### Block 3



### Block 4



### Block 5



### Block 6



Diagram Rows

### Inner border

You need to join your strips to get the length.

2 x 1 1/2" x 60 1/2" sides

2 x 1 1/2" x 50 1/2" top and bottom

Stitch the sides to the quilt centre and then the top and bottom.

### Outer Border

Stitch your strips together 21 of block 5 and 19 of block 6.

Sew in rows 9 blocks for top and bottom. Stitch this to the quilt.

11 blocks for the sides as in the main diagram.

Make up the corner blocks sewing the two triangles together to make a square. Now stitch a narrow strip of fabric 12 to each end and the corner squares. Stitch to the quilt.

### Quilting

Sandwich quilt top, wadding and backing together. Quilt by hand or machine as desired. Trim backing and wadding to size of quilt.

### Binding

Use your favourite method from fabric 12 to bind the quilt.



## Moontide Quilt 2

Designed and made by Sally Ablett

Size of quilt 58" x 70" - unfinished block size

6½" x 6½"

## Requirements

Fabrics from the Moontide collection

1. A620.3 - Moontide mermaids on dark blue with silver metallic - fat $\frac{1}{4}$
2. A624.2 - Rays on blue with silver metallic bubbles - fat $\frac{1}{4}$
3. A624.3 - Rays on dark blue with silver metallic bubbles - fat $\frac{1}{4}$
4. A623.1 - Gold metallic under the sea on blush - fat $\frac{1}{4}$
5. A623.2 - Silver metallic under the sea on turquoise - fat $\frac{1}{4}$
6. A622.1 - Pink mermaids with gold metallic bubbles - fat $\frac{1}{4}$
7. A622.3 - Mid blue mermaids with silver metallic bubbles - fat $\frac{1}{4}$
8. A621.3 - Silver metallic octopus on dark blue - fat $\frac{1}{4}$
9. A621.1 - Gold metallic octopus on eau de nil - fat $\frac{1}{4}$
10. A620.1 - Moontide mermaids on pink with gold metallic - fat $\frac{1}{4}$
11. A619.1 - Bright blues wave ombre - 1 $\frac{1}{2}$ yds - 1.40m
12. BB284 - Cottage rose -  $\frac{5}{8}$ yd - 60cm
13. BB94 - Light grey - 1 $\frac{1}{2}$ yds - 1.50m

Wadding and backing 62" x 74"

All measurements include  $\frac{1}{4}$ " seam allowances; press each seam as you go.

You need to join your fabric to get the length for the border strips.

## Cutting

From each of the fabrics 1, 3, 5, 7 and 9 cut 4 x 6 $\frac{7}{8}$ " x 6 $\frac{7}{8}$ " cut in half diagonally once from top left to bottom right

From each of the fabrics 2, 4, 6, 8 and 10 cut 4 x 6 $\frac{7}{8}$ " x 6 $\frac{7}{8}$ " cut in half diagonally once from bottom left to top right

From fabric 11 cut

20 x 7 $\frac{1}{4}$ " x 7 $\frac{1}{4}$ " cut in half diagonally twice  
36 x 2 $\frac{1}{2}$ " x 5 $\frac{7}{8}$ "

2 x 4 $\frac{7}{8}$ " x 4 $\frac{7}{8}$ " cut in half diagonally once  
From fabric 12 cut

36 x 2 $\frac{1}{2}$ " x 5 $\frac{7}{8}$ "

2 x 4 $\frac{7}{8}$ " x 4 $\frac{7}{8}$ " cut in half diagonally once  
From fabric 13 cut

7 x 1 $\frac{1}{2}$ " x 42"

20 x 7 $\frac{1}{4}$ " x 7 $\frac{1}{4}$ " cut in half diagonally twice

## Making up the blocks

Block 1: Lay out the fabric pieces for the block. Sewing the two small triangles together and then stitch this to your larger triangle to make a square. For each colour way you will have 4 in total of block 1

Block 2: This is made up as block 1 but your large triangle will be on the left side again 4 of each colour way.

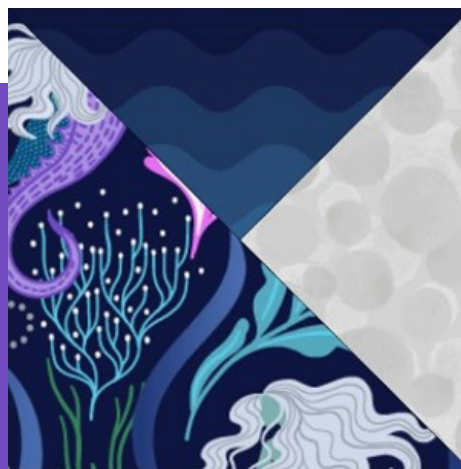
Block 3: The large triangle this time will be in the top right corner, as before made up in the same way. 4 of each colour way.

Block 4: On block 4 the large triangle will be on the top left side and made up as before. In total 4 of each colour way.

Complete the quilt centre

Lay out all the blocks as in the main diagram. Stitch in rows pressing the seams in the opposite way each time. This will help when you are sewing the rows together.

### Block 1

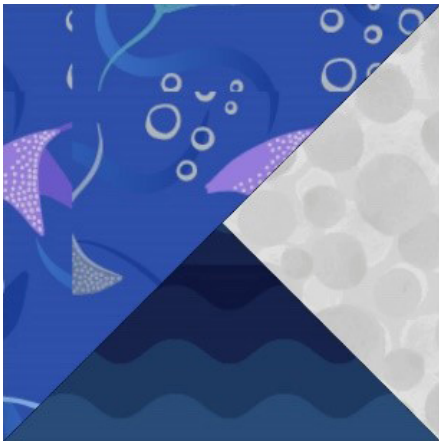


### Block 2

### Block 3



### Block 4



### Inner border

You need to join your strips to get the length.

2 x 1 1/2" x 60 1/2" sides

2 x 1 1/2" x 50 1/2" top and bottom

Stitch the sides to the quilt centre and then the top and bottom.

### Outer Border

Stitch your strips together 21 of block 5 and 19 of block 6.

Sew in rows 9 blocks for top and bottom. Stitch this to the quilt.

11 blocks for the sides as in the main diagram.

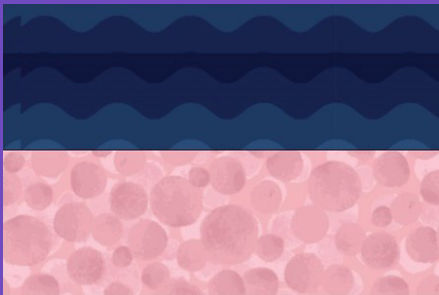
Make up the corner blocks sewing the two triangles together to make a square. Now stitch a narrow strip of fabric 12 to each end and the corner squares. Stitch to the quilt.

### Quilting

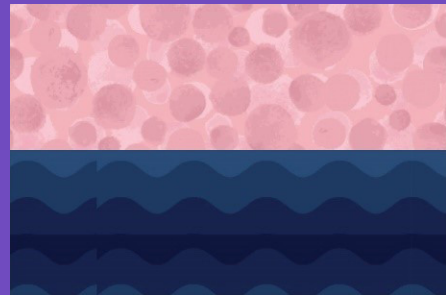
Sandwich quilt top, wadding and backing together. Quilt by hand or machine as desired. Trim backing and wadding to size of quilt.

### Binding

Use your favourite method from fabric 12 to bind the quilt.



### Block 5



### Block 6

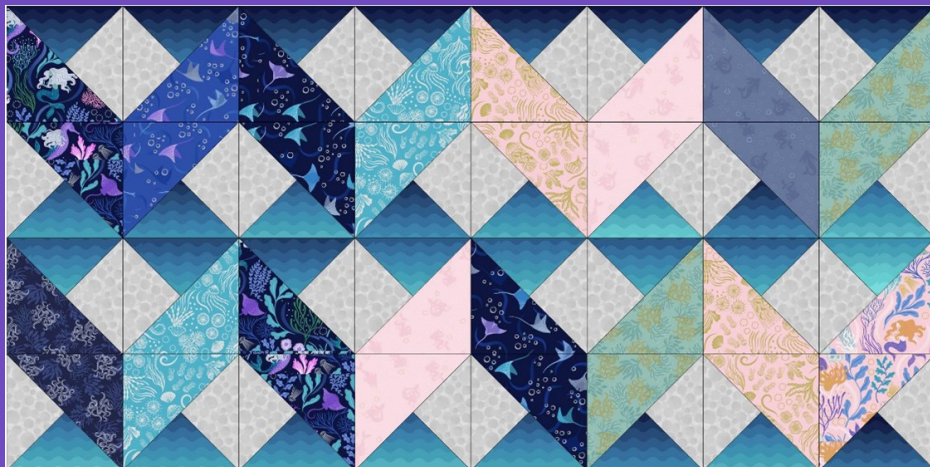


Diagram Rows