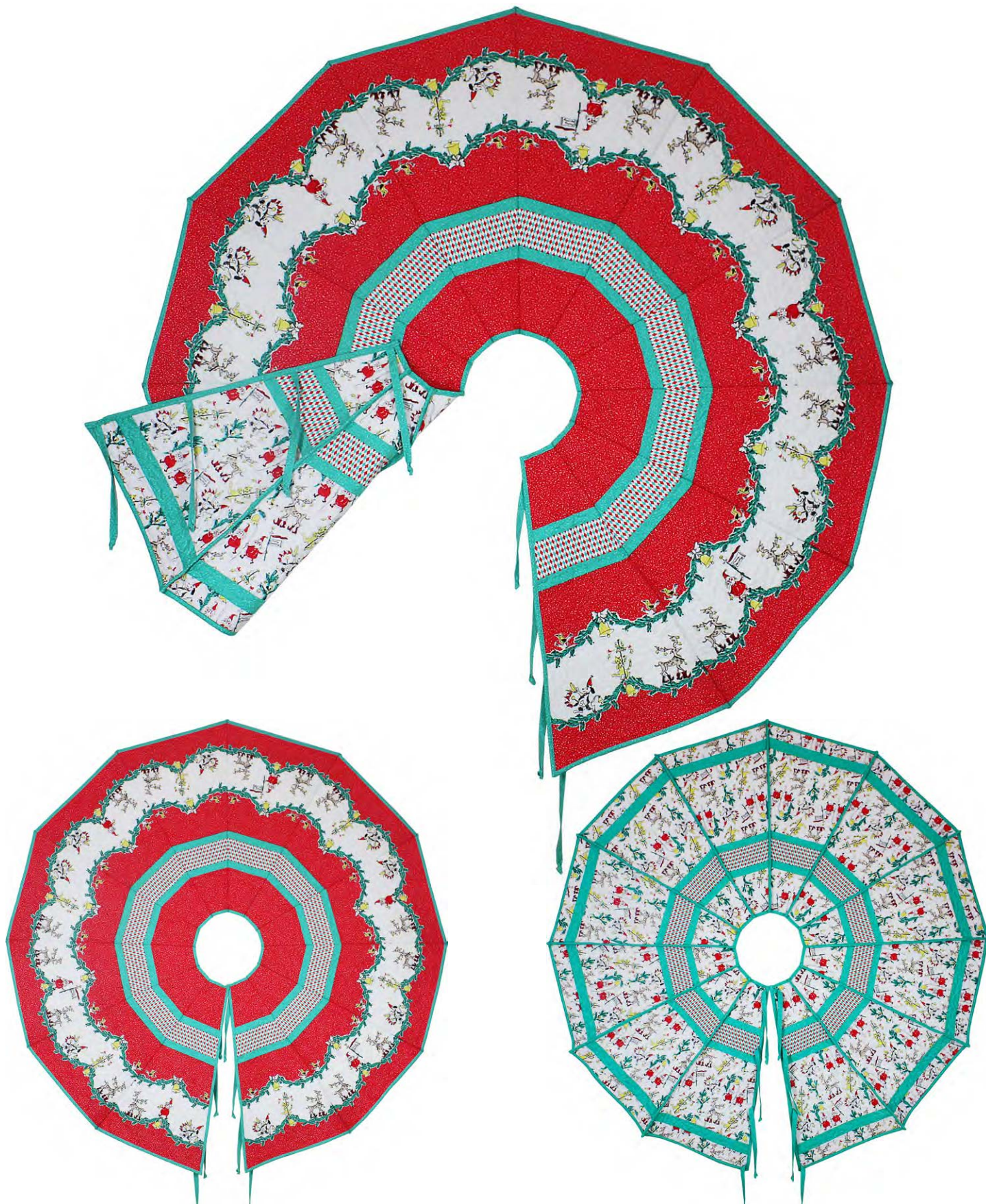


michael miller FABRICS

HOLIDAY FRIVOLIDAY

Reversible Christmas Tree Skirt

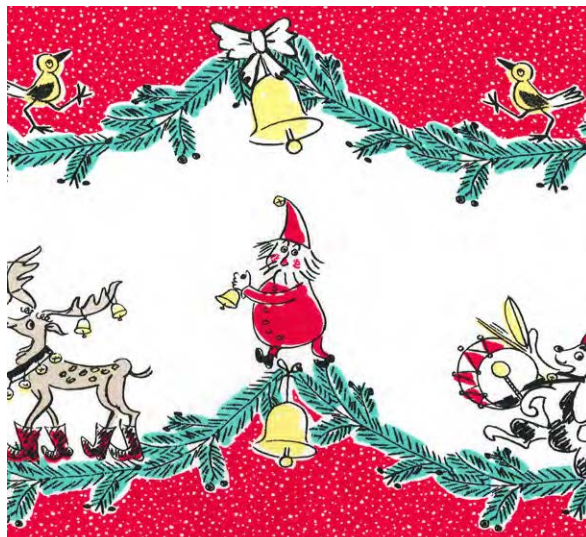
Size: Approx. 60" diameter | Design by: Marinda Stewart | Level: CONFIDENT BEGINNER



Free Pattern available on michaelmillerfabrics.com



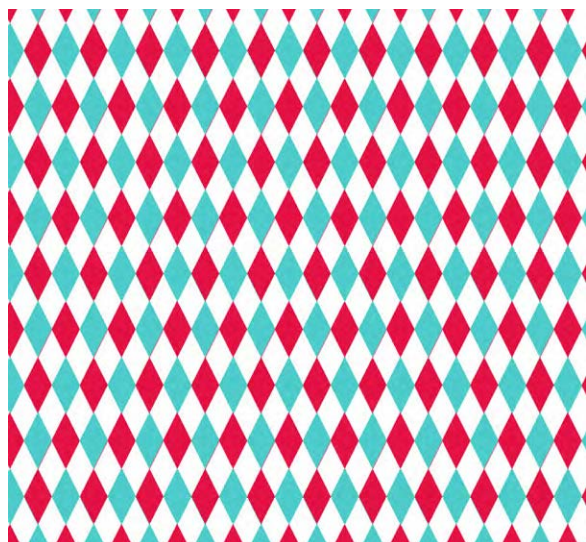
FABRIC REQUIREMENTS



CX8034 Santa
Holiday Parade
3 yards



CX8033 Santa
Holiday Frivolity
2 1/8 yards



CX4831 Hollyberry
Mini Harlequin
5/8 yard



CX4846 Santa
Spatter Dots
2 1/2 yards

Kit Info	12 Kits	24 Kits
CX8034 Santa	36 yards (3 bolt)	72 yards (6 bolts)
CX8033 Santa	25 1/2 yards (2 bolt)	51 yards (4 bolt)
CX4831 Hollyberry	7 1/2 yards (1 bolt)	15 yards (1 bolt)
CX4846 Santa	30 yards (2 bolt)	60 yards (4 bolts)

'Holiday Frivoliday' Reversible Christmas Tree Skirt
 Designed by Marinda Stewart
 Size: Approximately 60" diameter
 Skill Level: Confident Beginner

12-panel Christmas Tree skirt is assembled one quilted panel at a time. Each seam is bound.
 Skirt ties closed.

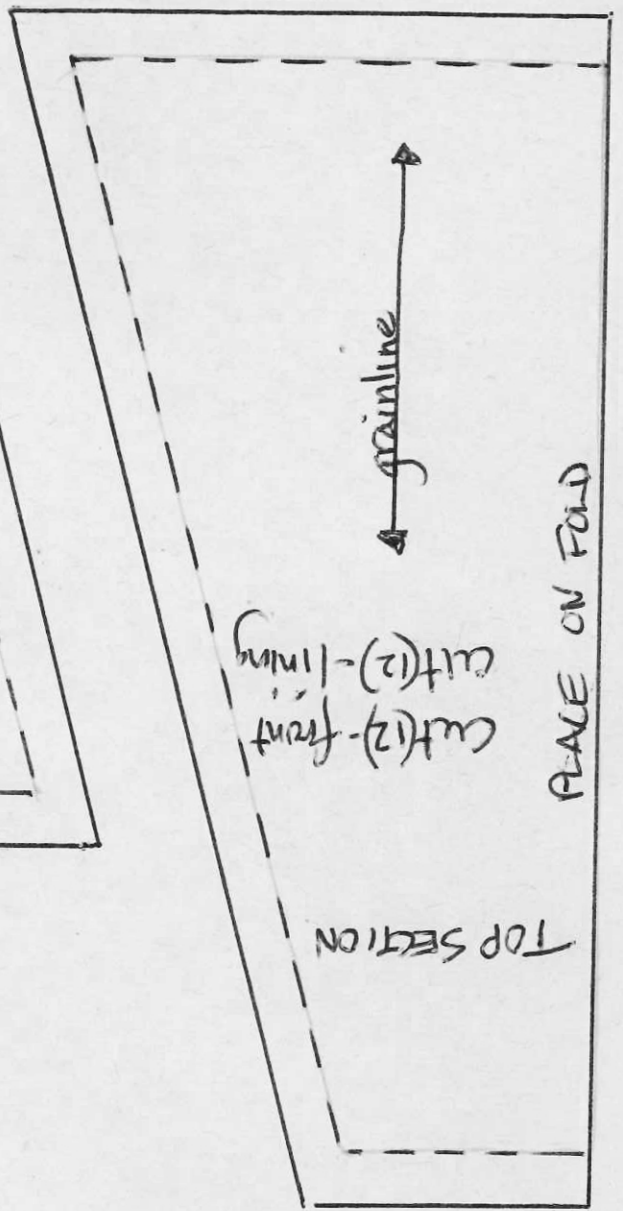
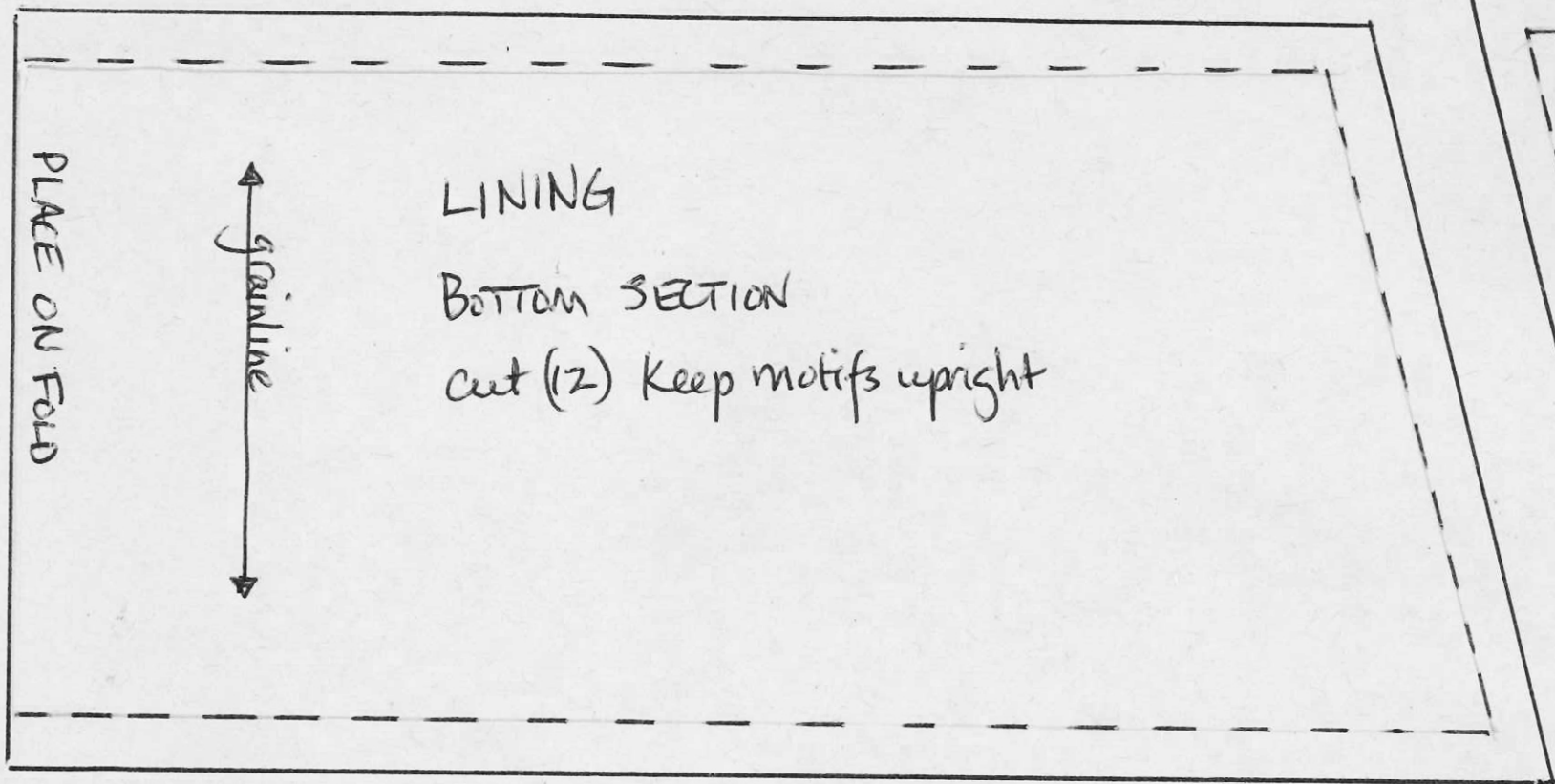
Fabric	Yardage	Cutting
CX8034 Santa Holiday Parade	3 yards	(12) bottom sections ** (see pattern) (12) top sections (from red)
CX8033 Santa Holiday Frivoliday	2 1/8 yards	(12) tops *** (12) middles-lining *** (12) bottom-lining *** (see pattern)
CX4831 Hollyberry Mini Harlequin	5/8 yard	(6) 3 1/2" W.O.F.
CX4846 Santa Spatter Dots	2 1/2 yards	(18) 2 1/2" x W.O.F. - binding (12) 1 1/2" x W.O.F. - stripe section (12) 2" x 17"
Also Needed: Batting (each panel is approximately 17" wide at the bottom, 4" wide at the top and 26" high times (12)), thread to match, scissors, straight pins, rotary cutter, acrylic ruler, and mat.		
* Or amount needed to get a total of (12) repeats - (6) repeats - (6) each side of the double border ** Center on motif as shown *** Keep motifs upright		

Directions:

- For the striped section, sew (1) CX4846 1 1/2" x W.O.F. strip to each side of one CX4831 3 1/2" x W.O.F. strip. Make (6) sets total. Using the 'stripe' pattern piece, cut (12) pieces for the top side and (12) pieces for the lining.

2. For one front panel, sew together (1) CX8034 top piece (from the red section of the fabric), (1) stripe section, and (1) CX8034 bottom section as shown. Make (12) wedges total. Set aside.
3. For the lining panel, sew together (1) CX8033 top piece, (1) stripe section, (1) CX8034 middle section, (1) CX4846 2" x 16" piece, (1) CX8034 bottom piece. Trim excess CX4846 strip even with the side of the wedge. Make (12) wedges total. Set a side.
4. Using a finished wedge as a pattern - cut (12) wedges from batting.
5. Layer one piece of batting between one front with the border and one lining piece. Align all the raw edges. Baste. Quilt as desired. Make (12) quilted wedges.
6. Using CX4846 2 1/2" x W.O.F. strips - bind toop and bottom of each wedge. Piece binding as needed for efficient use.
7. Join wedges together with red border sides facing each other. Bind seam edges with CX4846. Turn under raw edges to finish at each end of the wedges. Bound seam will be a decorative finish on the lining side.
8. From CX4846 binding, strip cut (8) 12"-13" pieces. Fold raw edges into the center of each piece. Press. Fold in half lengthwise and top stitch each side for the ties.
9. Pin binding to each side of the wedges at the opening. Turn binding to the other side. Insert (4) ties equally spaced on each side. Top stitch binding in place to finish.
10. Tie skirt in place around the base of the tree to use.

Kit Info	12 Kits	24 Kits
CX8034 Santa	36 yards (3 bolts)	72 yards (6 bolts)
CX8033 Santa	25 1/2 yards (2 bolts)	51 yards (4 bolts)
CX4831 Hollyberry	7 1/2 yards (1 bolt)	15 yards (1 bolt)
CX4846 Santa	30 yards (2 bolts)	60 yards (4 bolts)

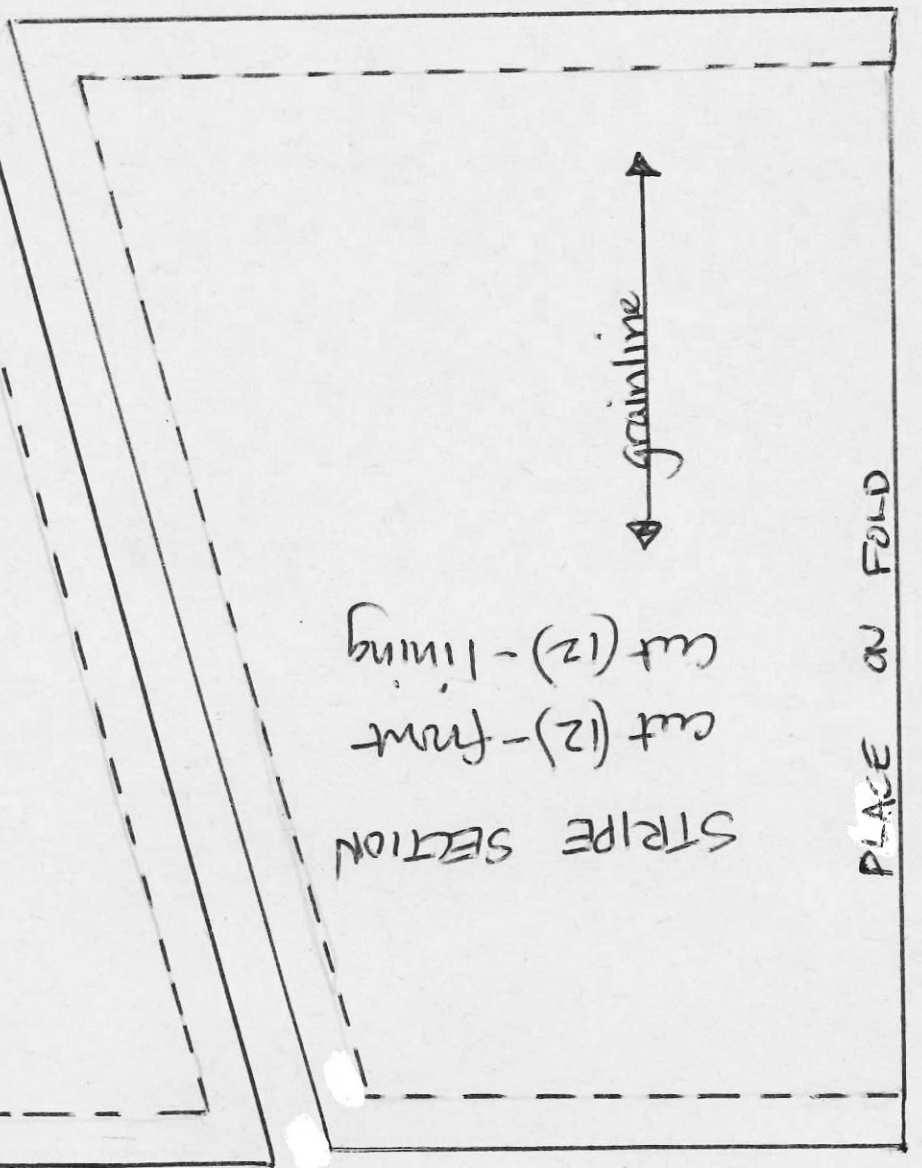
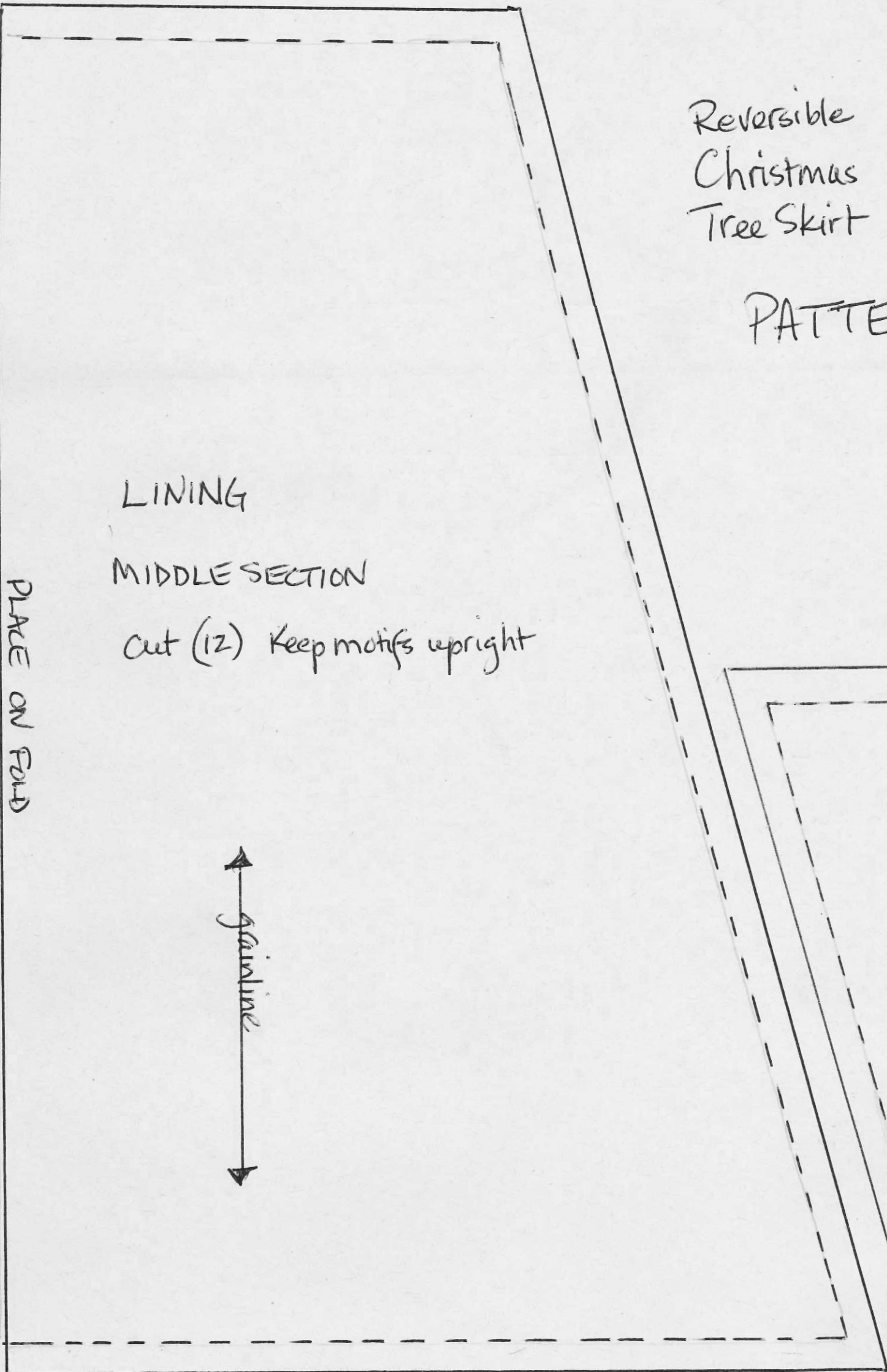


Reversible
Christmas
Tree Skirt

PATTERNS

pg. 1 of 2

* Marinda © 2018



PATTERNS

pg. 2 of 2

Reversible
Christmas
Tree Skirt

FRONT

BOTTOM SECTION

cut (12)

Center on motif
Keep motifs upright

PLACE ON FOLD

