

# Sea Star Pincushions

Designed by Kim Andersson of I Adore Pattern  
Interpreted by Stacey Day  
Featuring the Tidallace Collection by Kim Andersson



Check [www.windhamfabrics.com](http://www.windhamfabrics.com) Free Project section to see if there are any pattern updates before you start your quilt project

**WINDHAM FABRICS**

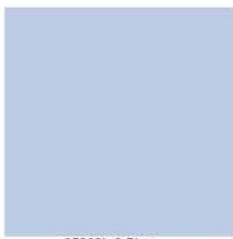
812 Jersey Ave ~ Jersey City, NJ 07310 ~ 201.659.0444 ~ FAX: 201.659.9719  
[www.windhamfabrics.com](http://www.windhamfabrics.com) email: [retail@windhamfabrics.com](mailto:retail@windhamfabrics.com)

# Sea Star Pincushions

Page 2



35362L-7 Deep Sea



35362L-8 Pico



35362L -2 Blush



40002-1 Ocean



40002-2 Seafoam



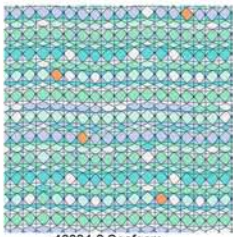
40003-3 White Ombre



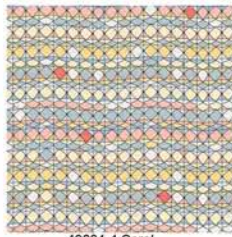
40003-4 Coral



40003-5 Aqua



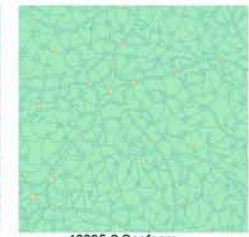
40004-2 Seafoam



40004-4 Coral



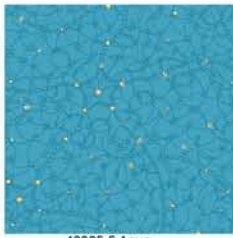
40004-5 Aqua



40005-2 Seafoam



40005-4 Coral



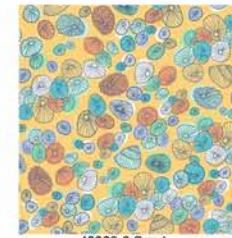
40005-5 Aqua



40005-6 Sand



40006-3 White



40006-6 Sand

## Materials:

(1) 8"x8" square of any Tidal Lace fabric for the pincushion back

(5) 4 1/2"x 4 1/2" squares of assorted fabric scraps of any Tidal Lace fabric for the legs

Polyester fiber fill or desired stuffing

Optional: 1 yard of a small decorative pom-pom trim ( 1/4" pom-poms or smaller) or other small trim

*\*To make pillows, enlarge the templates 200% and cut from appropriate sized scraps or yardage. Use the same instructions to make the pillow\**

# Sea Star Pincushions

Page 3

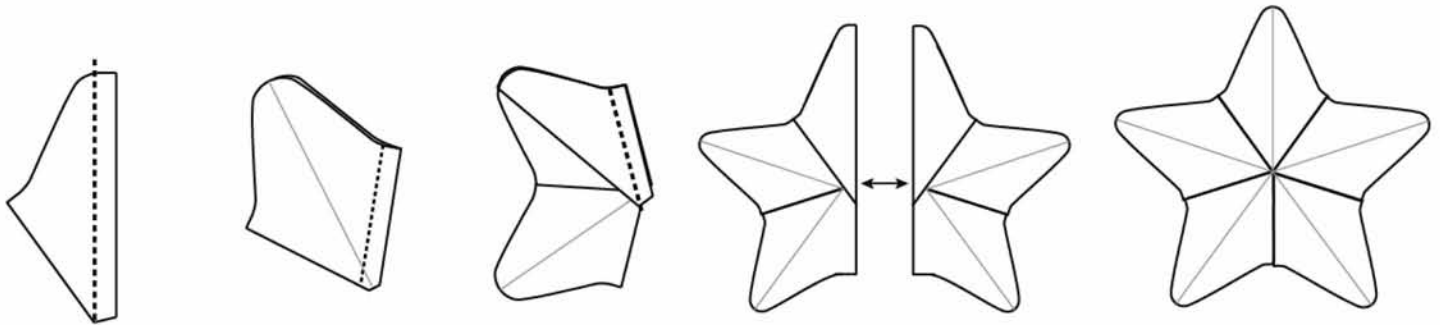
## Cutting

From the 8"x8" square cut one Whole Star for the back

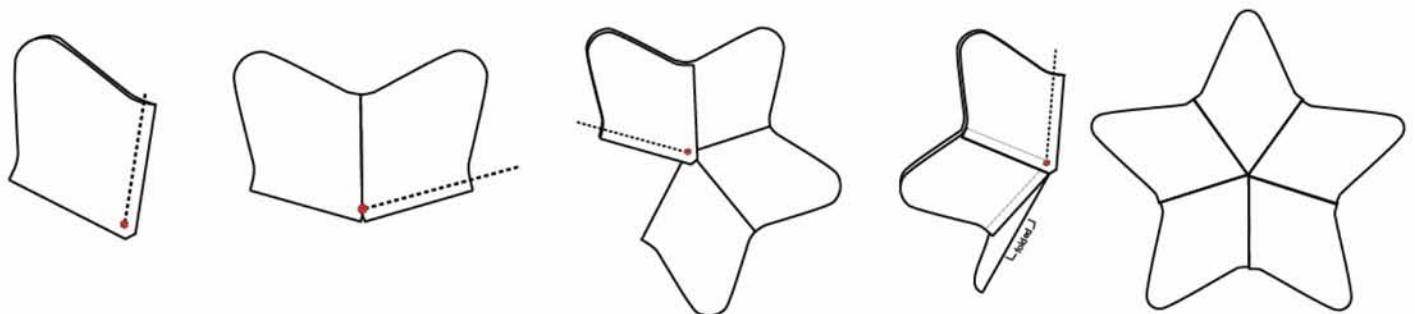
From the assorted 4 1/2" squares cut 10 half legs (5 left and 5 right), or 5 full legs

## Instructions

1. *For half legs only:* Sew 4 of the right and left half legs together in pairs to make 4 full pieced legs. Sew the final left leg to the left sided pair, and the final right leg to the right sided pair to make two half stars. Sew the half stars together at the center, matching seams, to make the top.



*For full legs only:* Mark the seam allowance at the bottom of the legs with a dot. Take four full legs and sew them together into pairs, sewing to but not through the dots. Sew the pairs together on one side to, but not through, the dots. Insert the final leg using a Y-seam technique: Sew right sides together down one side of the leg to the dot and backstitch. Match the final seam allowance raw edges right sides together and sew down to the dot and backstitch again. Check the right side of the star to make sure the seams are closed at the center. Use a hand stitch to close any small opening there may be at the center of the star.



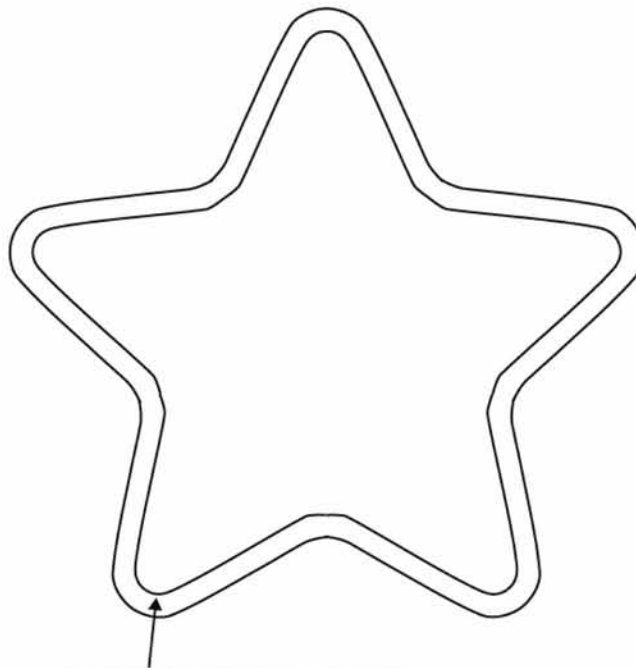
# Sea Star Pincushions

Page 4

*Continued for both leg options*

2. If desired, pin the optional trim to the right side of the bottom star piece, around the outside edge so that the pom-poms are facing in towards the center, and baste in place.

3. Pin the top and bottom stars right sides together, matching leg ends and notched of the bottom star to the leg seams of the top star. The top star will be slightly larger than the bottom and has to be eased into place, this allows the star to puff out when stuffed. Sew around the star, leaving a 1 1/4" opening open for turning. \*note\* if using the optional trim, go slowly and use a zipper foot to avoid the bulk of the trim\*



Sewing Line and optional trim placement guide

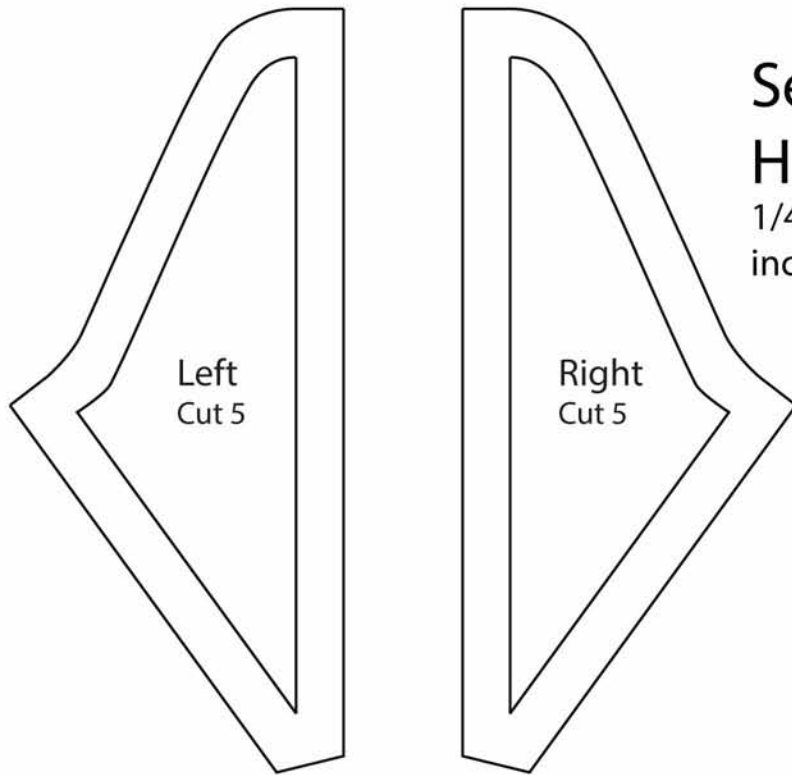
4. Clip the inside curves between the legs and notch the outside curves at the end of the legs. Turn the star right side out. Use a turning tool or chopstick to help gently push the legs into shape.

5. Stuff the star with the fiber fill or other desired filling until the edges are rounded out and the star is firm, but not hard, to the touch. Hand sew the opening in the star closed.

Be sure to visit [www.windhamfabrics.com](http://www.windhamfabrics.com) to see the complete collection and to download this and other Free Projects

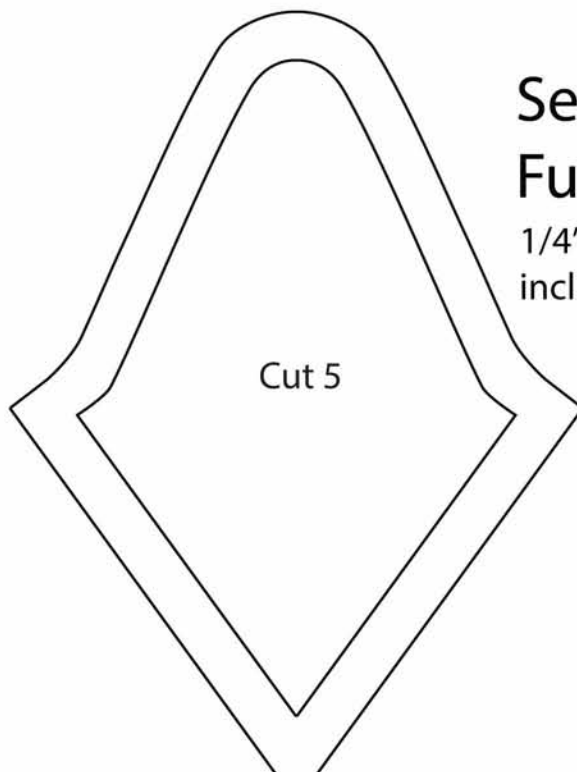
# Sea Star Pin Cushion Templates

Page 5



## Sea Star Pin Cushion Half Legs

1/4" seam allowance  
included



## Sea Star Pin Cushion Full Leg

1/4" seam allowance  
included

# Sea Star Pincushions

Page 6

SEA STAR PIN CUSHION  
WHOLE

