

X
X
X
X
X
X
X
X
X
X
X
X



XXXXXXXXXXXXXXXXXXXXXXXXXXXX



Sunflower

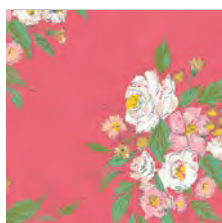
QUILT DESIGNED BY Sharon Holland

Signature

FABRICS DESIGNED BY SHARON HOLLAND



FOLIAR



SGN-68700
EXTEMPORE CELEBRATION



SGN-68701
FLORA AND FAUNA HIDDEN



SGN-68703
FRITILLARY SHADOW PLAY



SGN-68704
LACEY COSMOS



SGN-68705
TRAVELER PEBBLES



SGN-68708
UNTAMED BEAUTY DAYBREAK



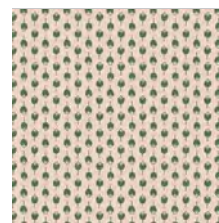
SGN-68711
VENTURE FORWARD



SGN-68713
SMALL WORLD SPRIGHTLY

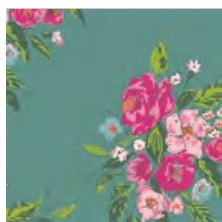


SGN-68710
LATERAL BUD PROFUSION



SGN-68707
TENDER ARRANGEMENT

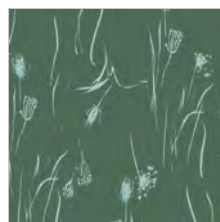
ATMOSPHERIC



SGN-58700
EXTEMPORE FANCY



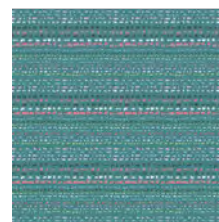
SGN-58701
FLORA AND FAUNA MILIEU



SGN-58702
SEED HEAD WINDSWEEP



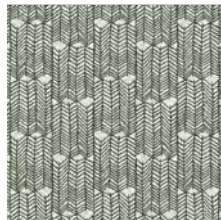
SGN-58704
LACEY STARDUST



SGN-58705
TRAVELER RAINDROPS



SGN-58708
UNTAMED BEAUTY TWILIGHT



SGN-58711
VENTURE CARAVAN



SGN-58712
A ROSE IS A ROSE FOREVER



SGN-58709
SPORANGIA PLAID DOTTED



SGN-58706
PATIO GARDEN GREEN THUMB



FEEL THE DIFFERENCE © 2018 Courtesy of Art Gallery Quilts LLC. All Rights Reserved.



FINISHED SIZE | 66" x 66"

FABRIC REQUIREMENTS

Fabric A	PE-433	2 yds.
Fabric B	SGN-58700	1 yd.
Fabric C	SGN-68704	7/8 yd.
Fabric D	SGN-58701	5/8 yd.
Fabric E	SGN-58702	2/3 yd.
Fabric F	SGN-68708	1/2 yd.
Fabric G	SGN-68707	3/8 yd.
Fabric H	SGN-58705	1/3 yd.

BACKING FABRIC

SGN68707- 4 yds. *(Suggested)*

BINDING FABRIC

SGN-58700 (Fabric **B**) *(Included)*

CUTTING PREPERATIONS

Fabric **A**

- Four (4) 14" perfect squares
- Five (5) 11" perfect squares
- Four (4) 5 3/8" perfect squares
- Eight (8) 5" x 14" strips

Fabric **B**

- One (1) 18 1/2" perfect squares
- Seven (7) 2 1/4" x WOF (Binding)

Fabric **C**

- Four (4) 11" perfect squares
- Eight (8) 5" squares

Fabric **D**

- Two (2) 10 1/4" perfect squares
- Eight (8) 5" perfect squares
- Four (4) 5 3/8" perfect squares

Fabric **E**

- Four (4) 11" perfect squares
- Four (4) 5" perfect squares

Fabric **F**

- Two (2) 10 1/4" perfect squares
- Eight (8) 5 3/8" perfect squares

Fabric **G**

- Three (3) 11" perfect squares

Fabric **H**

- One (1) 10 1/4" perfect square
- Four (4) 5 3/8" perfect squares

CONSTRUCTION

Sew all rights sides together with 1/4" seam allowance.

- Draw a diagonal line on the wrong side of the four Fabric **D** 5" perfect squares.
- Noting orientation, place a marked square right sides together on a corner of the 18 1/2" square from Fabric **B**.
- Sew on the drawn line. Tip: sewing just outside the line on the corner side will keep the unit square.
- Trim 1/4" past the line
- Press open
- Noting orientation, repeat on the remaining corners as shown.
- Makes (1) 18 1/2" (unfinished) Block 1



DIAGRAM 1

- Draw a diagonal line on the wrong side of an 11" perfect square from Fabric **A**.
- Place the marked square right sides together with an 11" perfect square from Fabric **E**, matching all edges.
- Sew a $\frac{1}{4}$ " seam on each side of the drawn line. In the same manner stitch on each side of the remaining diagonal line.
- Align the short end of a ruler with the straight edge of the squares and the long side centered at the intersection of the diagonal lines and $5\frac{1}{2}$ " from the outside edge.
- Cut the square in half, but leave the cut pieces in place. Without disturbing the shape of the original square, cut the square in half again in the same manner, dividing it into quarters.
- Cut the squares quarter-sections apart on the drawn line. Open and press towards the dark print.
- Trim to 5" squares. Makes eight (8) half-square triangles (HST) units.
- Make a total of 32 Fabric **A-E** HST.

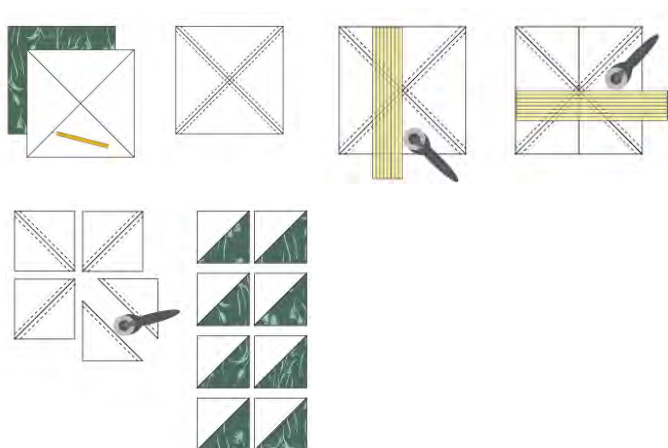


DIAGRAM 2

- Repeat the same HST method in order to create a total of eight (8) from Fabric **A-C** and twenty four (24) **C-G** HST. Set aside

- Sew a 5" x 14" strip from Fabric **A** to a side from a 14" perfect square from fabric **A**.
- Sew a 5" perfect square from Fabric **D** to the short end of a 5" x 14" strip from Fabric **A**. Join the sections as diagram below. Set aside.



DIAGRAM 3

- Noting orientation, sew four (4) **A-E** HST together
- Then, sew another four (4) **A-E** HST together and one (1) 5" perfect square from Fabric **E**.

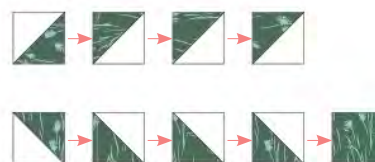


DIAGRAM 4

- Join the sections as diagram below in order to make Block 2. Make a total of four (4) Block 2

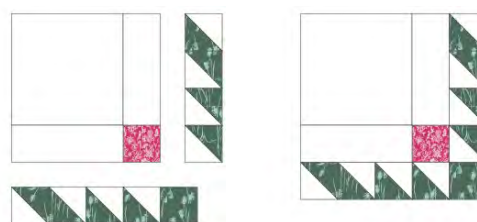
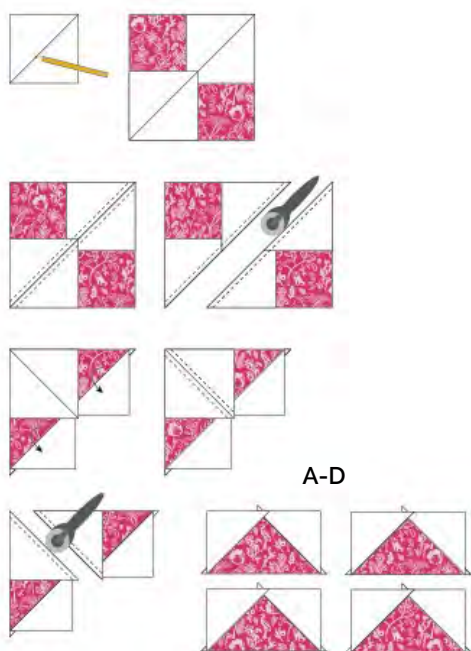


DIAGRAM 5

No waste Flying Geese

- Draw a diagonal line on the wrong side of four (4) $5\frac{3}{8}$ " perfect square from fabric **A**. Place a marked square right sides together on the corner of a $10\frac{1}{4}$ " perfect square from fabric **D**.
- In the same manner, place another marked white solid square in the opposite corner as shown. Pin squares in place if desired

- Sew a ¼" seam on each side of the drawn line. Cut apart on the line. Open and press towards Fabric **A**. This will make two (2) Flying Geese sections.
- Noting orientation of the drawn line, place a marked Fabric **A** perfect square, right sides together on fabric **D** of one Flying Geese section as shown.
- Sew a ¼" seam on each side of the drawn line. Cut apart on the line and press towards solid corners to make two (2) Flying Geese units.
- Repeat with remaining instructions above for a total of four (4) fabric **A-D** Flying Geese units.
- Repeat the same process for the following Flying Geese units:



D-F



= 4

F-H



= 4

H-F



= 4

F-D



= 4

DIAGRAM 6

- Noting orientation, sew a fabric **A-D** Flying Geese unit between two (2) 5" **A-C** HST.



- In the same manner, sew a **D-F** Flying Geese piece between two (2) 5" **C-G** HST



- Pair an **H-F** Flying Geese between two (2) 5" **C-G** HST



- Pair an **F-H** Flying Geese between two (2) 5" **C-G** HST



- Pair an **D-A** Flying Geese between two (2) 5" perfect square from Fabric **C**



- Make a total of four (4) Block 3



DIAGRAM 7

QUILT TOP ASSEMBLY

- Referring to the diagram below, sew Block 1, 2 and 3 into three (3) rows of three (3) block each. Join the rows.

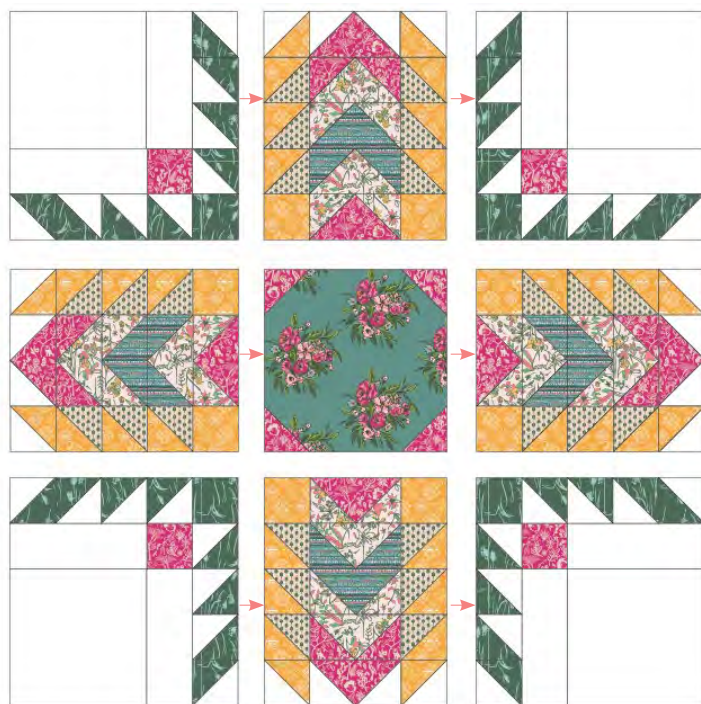


DIAGRAM 8

QUILT ASSEMBLY

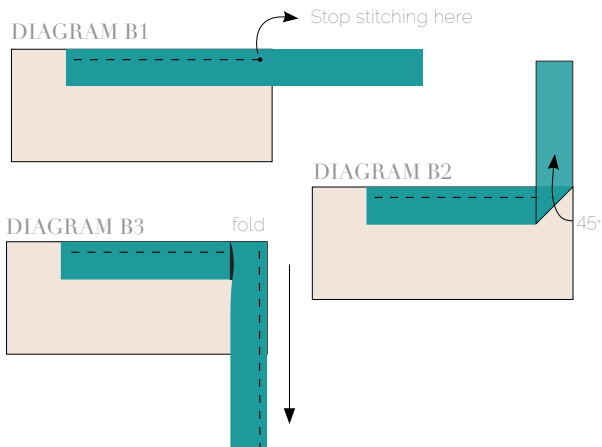
Sew rights sides together

- Place BACKING FABRIC on a large surface wrong side up. Stretch it with masking tape against that surface.
- Place BATTING on top of backing fabric.
- Place TOP on top of the batting with right side facing up. Smooth away wrinkles using your hands.
- Pin all layers together and baste with basting thread, using long stitches. You can also use safety pins to join the layers.
- Machine or hand quilt starting at the center and working towards the corners. Remember that quilting motifs are a matter of personal preference. Have fun choosing yours!
- After you finished, trim excess of any fabric or batting, squaring the quilt to proceed to bind it.

BINDING

Sew rights sides together.

- Cut enough strips 1 ½" wide by the width of the fabric **B** to make a final strip 274" long. Start sewing the binding strip in the middle of one of the sides of the quilt, placing the strip right side down and leaving an approximated 5" tail. Sew with ¼" seam allowance (using straight stitch), aligning the strip's raw edge with the quilt top's raw edge.
- Stop stitching ¼" before the edge of the quilt (**DIAGRAM B 1**). Clip the threads. Remove the quilt from under the machine presser foot. Fold the strip in a motion of 45° and upward, pressing with your fingers (**DIAGRAM B 2**). Hold this fold with your finger, bring the strip down in line with the next edge, making a horizontal fold that aligns with the top edge of the quilt (**DIAGRAM B 3**). Start sewing at ¼" of the border, stitching all the layers. Do the same in the four corners of the quilt.
- Stop stitching before you reach the last 5 or 6 inches. Cut the threads and remove the quilt from under the machine presser foot. Lay the loose ends of the binding flat along the quilt edge, folding the ends back on themselves where they meet. Press them together to form a crease. Using this crease as the stitching line, sew the two open ends of the binding with right sides together (you can help yourself marking with a pencil if the crease is difficult to see).
- Trim seam to ¼" and press open. Complete the sewing. Turn binding to back of the quilt, turn raw edge inside and stitch by hand using blind stitch.



XXXXXXXXXXXXXXXXXXXXXXXXXXXXXXXXXXXX

*Congratulations
& enjoy*

XXXXXXXXXXXXXXXXXXXXXXXXXXXXXXXXXXXX



artgalleryfabrics.com

NOTE: While all possible care has been taken to ensure the accuracy of this pattern, We are not responsible for printing errors or the way in which individual work varies. Please read instructions carefully before starting the construction of this quilt. If desired, wash and iron your fabrics before starting to cut.

© 2018 Courtesy of Art Gallery Quilts LLC. All Rights Reserved.