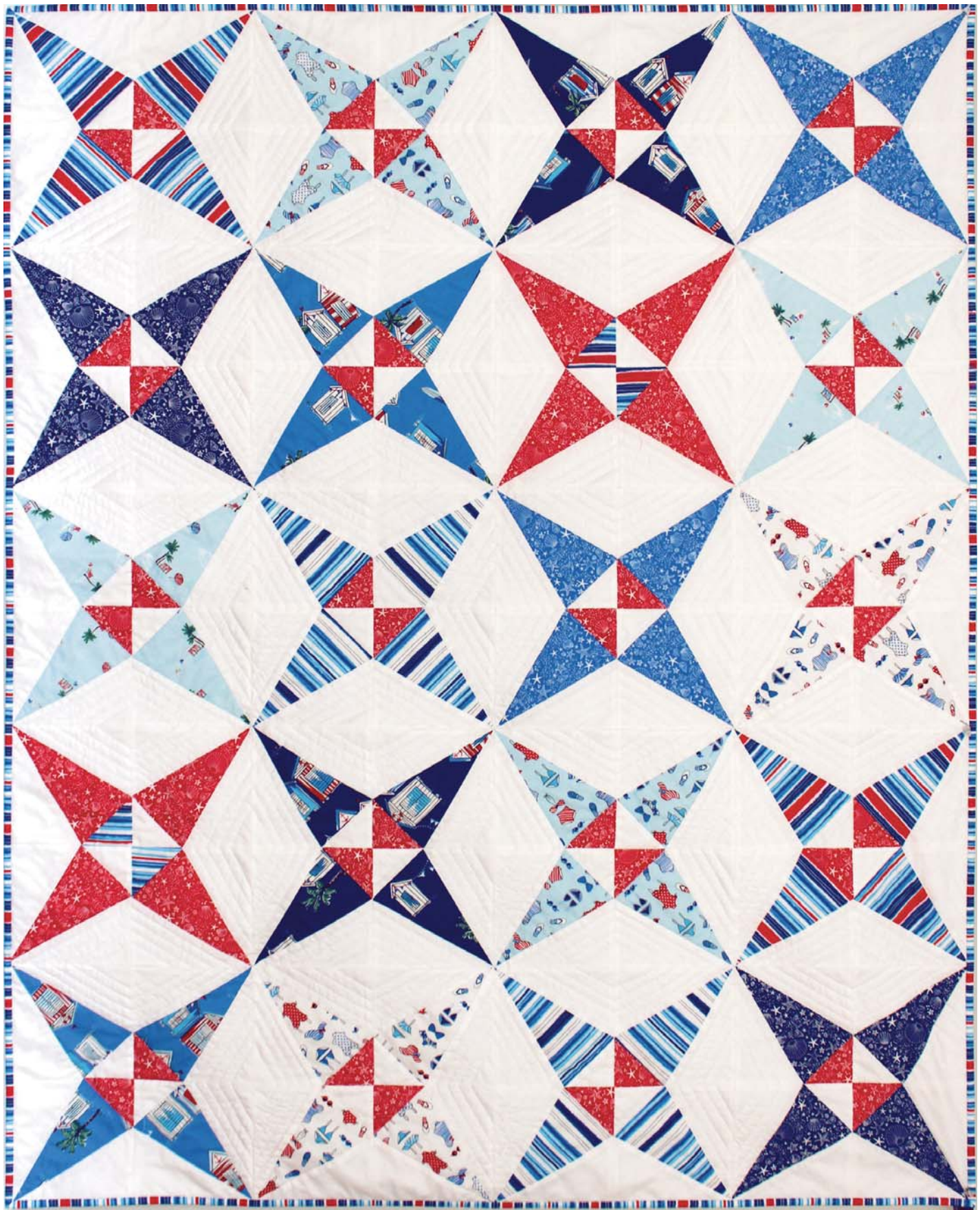


# To the Beach Quilt





# To the Beach Quilt

## Fabric Requirements

**Skill Level:** Intermediate Foundation Paper Piecing

**Completed Quilt:** 48" x 60"



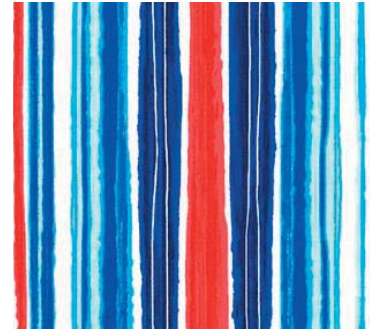
DC8172 Red  
SEASHORE  
1/2 yard



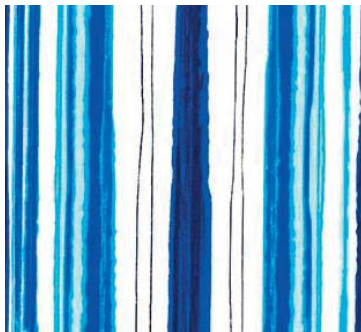
DC8172 Royal  
SEASHORE  
1/4 yard



DC8172 Wave  
SEASHORE  
1/4 yard



DC8173 Cabana  
CABANA STRIPE  
1/4 yard + **BINDING** 1/2 yard



DC8173 Sailor  
CABANA STRIPE  
1/4 yard



DC8174 Malibu  
SEAS THE DAY  
1/4 yard



DC8174 Royal  
SEAS THE DAY  
1/4 yard



DC8175 Sky  
GIRLS JUST WANNA HAVE SUN  
1/4 yard



DC8175 White  
GIRLS JUST WANNA HAVE SUN  
1/4 yard



DC8176 Aqua  
LIFES A BEACH  
1/4 yard



SC5333 Bright White  
COTTON COUTURE  
1 1/2 yards \*\*



WBP6774 Blue  
VINE MAZE  
**BACKING FABRIC:** 1 1/2 yards \*

\* NOTE: Backing Fabric is a wide back 108" wide fabric. For regular 45" wide fabric, use 3yds & piece strips to measure 54" x 66".

\*\* NOTE: Yardage requirement listed is based on the assumption that the user is comfortable with foundation paper piecing without much fabric waste. If you are less accurate with your cutting for FPP, you may want to increase yardage a bit.

## Also Needed:

- 52" x 64" quilt batting.
- A rotary cutter, a long acrylic ruler with 45° marking, 81 sheets copier paper for paper piecing templates, glue stick, a thin-edged metal ruler, a cutting mat, thread, scissors, pins.



**QUILT TITLE:** To The Beach

**SIZE:** 48" x 60"

**DESIGN BY:** Tamara Kate

**SKILL LEVEL:** Intermediate - Foundation  
Paper Piecing

FABRIC SKU		YARDAGE (one quilt)	# OF BOLTS FOR 12 KITS		# OF BOLTS FOR 24 KITS	
(A)	DC8176 Aqua	1/4 Yard	1 Bolt	3 Yards	1 Bolt	6 Yards
(B)	DC8175 Sky	1/4 Yard	1 Bolt	3 Yards	1 Bolt	6 Yards
(C)	DC8175 White	1/4 Yard	1 Bolt	3 Yards	1 Bolt	6 Yards
(D)	DC8174 Malibu	1/4 Yard	1 Bolt	3 Yards	1 Bolt	6 Yards
(E)	DC8174 Royal	1/4 Yard	1 Bolt	3 Yards	1 Bolt	6 Yards
(F)	DC8173 Cabana	1/4 Yard	1 Bolt	3 Yards	1 Bolt	6 Yards
(G)	DC8173 Sailor	1/4 Yard	1 Bolt	3 Yards	1 Bolt	6 Yards
(H)	DC8172 Wave	1/4 Yard	1 Bolt	3 Yards	1 Bolt	6 Yards
(I)	DC8172 Royal	1/4 Yard	1 Bolt	3 Yards	1 Bolt	6 Yards
(J)	DC8172 Red	1/2 Yard	1 Bolt	6 Yards	1 Bolt	12 Yards
(K)	SC5333 Bright White	1 1/2 Yard	2 Bolt	18 Yards	3 Bolt	36 Yards
(Backing) WBP6774 Blue *		1 1/2 Yards	1 Bolt	18 Yards	2 Bolt	36 Yards
(Binding) DC8173 Cabana		1/2 Yard	1 Bolt	6 Yards	1 Bolt	12 Yards
<b>Total Bolts Needed</b>			14 Bolts		16 Bolts	

\* NOTE: Backing Fabric is a Wide Back, 108" wide fabric. For regular 45" wide fabric, use 3yds per quilt.

# To the Beach Quilt

Read through instructions prior to starting.

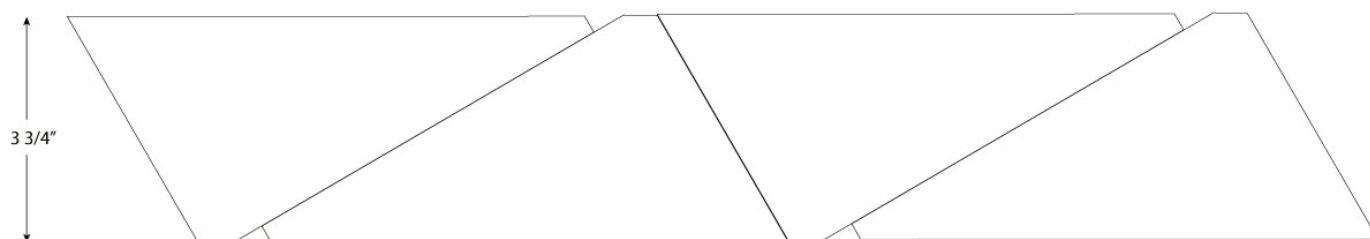
## “Foundation Paper Piecing Block” & “Cutting Templates A & B” Printing:

- Print the accompanying pattern PDF documents following these instructions:
- Page size is 8.5” x 11”
- Select File, then Print.
- Set Page Scaling to “None” (do not select “Shrink to Fit”)
- Press “Print”

You will need at least 1 copy of the Cutting Templates. The templates should be cut out along the indicated Cutting Lines. You will need 80 copies of the FPP Block. The templates should be cut out along the indicated Seam Allowance Lines.

## Cutting Instructions:

- BINDING FABRIC      - Cut 6 strips 2¼” x WOF (width of fabric). Set aside for binding.
- BACKING FABRIC      - Cut 1 piece 54” x 66”. Set aside for backing.
- SC5333 White      - Cut 1 strip 3½” x WOF. Subcut into 12 (3½” squares). Cut these squares in half diagonally, resulting in 24 right-angled triangles.  
                                 - Cut 12 strips 3¾” x WOF. Using **Template A**, subcut each of these strips into 8 pieces as in the following diagram.



- DC8172 Red      - Cut 2 strips 3½” x WOF. Subcut into 18 (3½” squares). Cut these squares in half diagonally, resulting in 36 right-angled triangles.
- DC8173 Cabana      - Cut 2 strips 4¼” x WOF. Using **Template B**, cut 8 pieces, keeping the arrow on the template parallel to the long edge of strip.  
                                 - Cut 2 (3½” squares). Cut these squares in half diagonally, resulting in 4 right-angled triangles.
- DC8173 Sailor      - Cut 2 strips 4¼” x WOF. Using **Template B**, cut 8 pieces, keeping the arrow on the template parallel to the long edge of strip.
- DC8172 Red, Wave & Royal, DC8174 Malibu & Royal, DC8175 Sky & White, DC8176 Aqua:  
                                 - Cut 1 strip 7¼” x WOF. Using **Template B**, cut 8 pieces from each strip, keeping the arrow on the template perpendicular to the long edge of strip (Alternate the triangles upward & downward along the WOF for more efficient cutting).

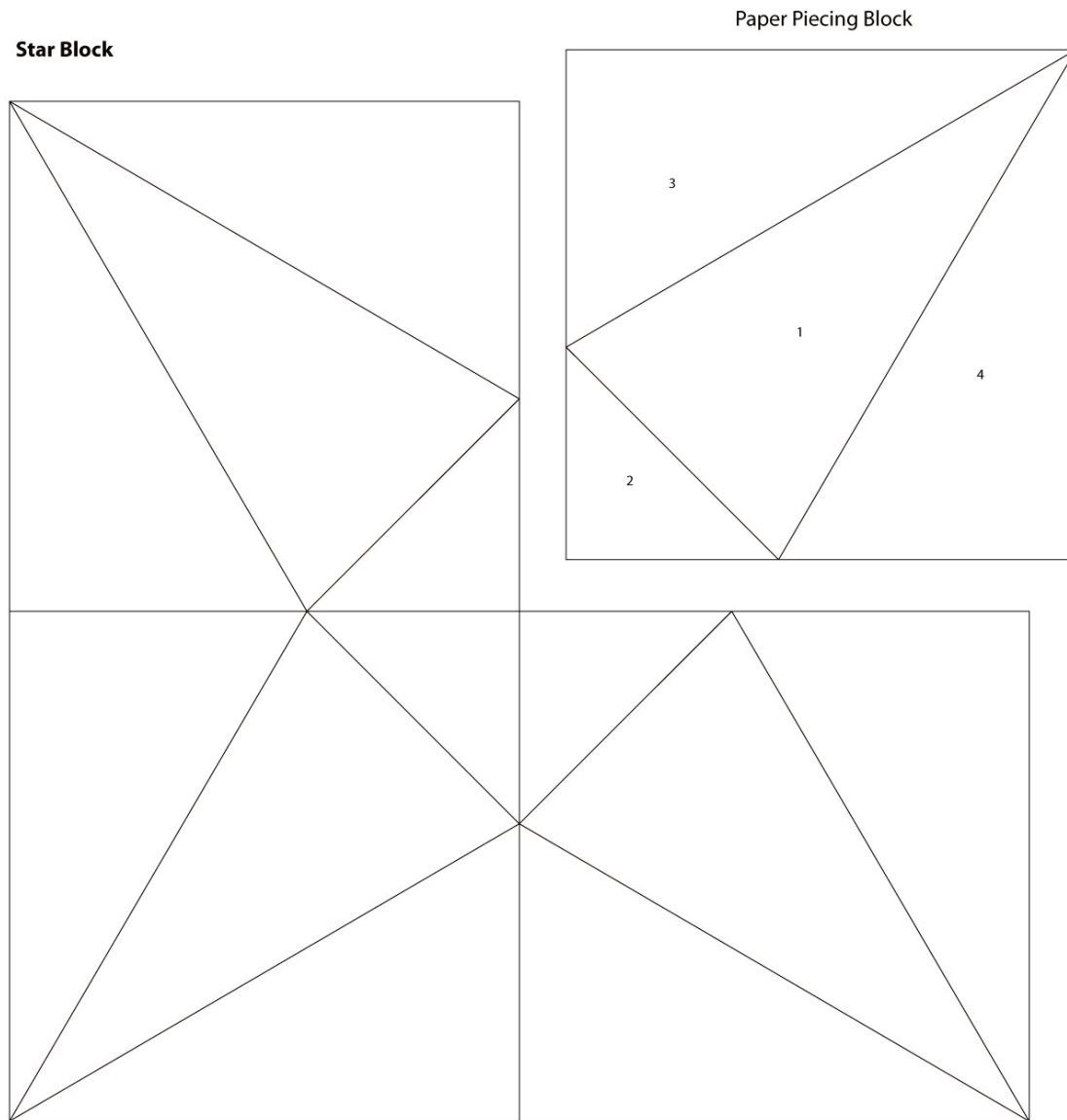
NOTE: **Template A** and the 3½” triangles are not an accurate final cut of the fabric pieces, but leave a bit of allowance for paper piecing. This allowance is approximately ½”. Refer to note on the Fabric Requirements page.

**Template B** includes an accurate ¼” seam allowance, as the pieces cut from this are the first pieces used in the paper piecing blocks.

# To the Beach Quilt

## Layout:

\* Each of the 20 Star Blocks in the quilt consists of 4 smaller Paper Piecing Blocks (see Diagram below). Each of these smaller block consists of: 1 patterned triangle (#1) cut from **Template B**, 2 white pieces (#3 & 4) cut from Template A and a right-angled triangle (#2). For all of the Star Blocks EXCEPT the ones with the DC8172 Red **Template B** triangles, 2 of the Paper Piecing Blocks use white 3½" triangles and the other 2 use DC8172 Red 3½" triangles. The blocks using the DC8172 Red **Template B** pieces use 2 white 3½" triangles and the other 2 use DC8173 Cabana 3½" triangles.



## Paper Piecing:

\* All seam allowances are ¼".

- Piece block together following number order (1 to 4) printed on template. To begin, affix fabric #1 to its corresponding position on the back of the template using a dab of the glue stick, right side of fabric toward the template, checking to see that the 1/4" seam allowance is in place by holding the template up to the light. Sew other pieces in order, using a metal ruler to fold the template crisply along lines where needed and remembering to leave the 1/4" external seam allowance around the block as indicated by the dashed lines.
- Square up blocks.

# To the Beach Quilt

## **Piecing Quilt Top:**

- Sew the Paper Pieced Blocks together in sets of 4 to form the Star Blocks.
- Following the quilt photo, sew the Star Blocks together, one row at a time. Press seams open. Pin rows together, matching seam lines and corners. Sew rows together. Press seams open.

## **Assembling Quilt:**

Layer backing, batting and quilt top. Baste or pin. Quilt as desired. Square up quilt top. Join binding strips together and bind in your preferred fashion.

1" Test  
Square

— Cutting line

TO THE BEACH QUILT

Cutting Template A

tamarakATE

Designed by Tamara Kate  
All rights reserved. 2018  
[kayajoydesigns.com](http://kayajoydesigns.com)

tamarakATE

Designed by Tamara Kate  
All rights reserved. 2018  
[kayajoydesigns.com](http://kayajoydesigns.com)

TO THE BEACH QUILT

Cutting Template B



1" Test  
Square

— Sewing line  
- - - Seam allowance

## TO THE BEACH QUILT

Foundation Paper Piecing  
Template

3

1

4

2

tamarakATE

Designed by Tamara Kate  
All rights reserved. 2018  
[kayajoydesigns.com](http://kayajoydesigns.com)