

WITCH'S HAT

Featuring PRIMO PLAID FLANNELS

Project & Photos by Miriam Rawson



Miriam's adorable Witch Hat project does double-duty as costume and tabletop décor, so consider making two of these! Modeled on the cover by four year-old Italia as a costume, it's equally effective as a centerpiece in Miriam's Halloween table setting -- the perfect way to serve pumpkin soup, or your favorite spooky dinner! To complete the look, stitch up a small, simple PRIMO PLAID FLANNEL table cover and napkins like hers—they can be used throughout the harvest season.

(Finished Hat measures approx. 21-1/2" opening, 18" high)

- 1/2 yard **PRIMO PLAID FLANNELS** Black/Grey striped (J282-0112)
- 1-1/2" x WOF (width of fabric) strip of Rust/Brown herringbone (J278-0128)
- 1 FQ each: Black solid flannel (7610-0112) and Orange Herringbone (J281-0128)
- 1/2 pkg Annie's Soft and Stable® stabilizer (black)
- Anchor Floss, White (#926), Orange (#1339), and Green (#225)

1. Assemble the pattern pieces for the hat and brim by taping them together and matching the sides that have the same letters (Side 1 taped to corresponding Side 1 of another pattern piece, etc.).

2. Cut out one hat and one brim from the black/gray flannel. Spray the wrong side of the pieces with the basting spray and adhere to the Soft and Stable. You can then cut Soft and Stable, matching the hat and brim pieces previously cut.

3. Decorate the hat by cutting out the large, medium, and small circles from the orange and black pieces of wool. You can use some of the scraps to cut triangle shapes as well. I cut about 9 orange circles and 9 black circles. Some will be large and some smaller. You can do about half of each size. I cut 3 large triangles and 3 small ones. I decorated the center of the triangles with black circles—you can cut 3 extra circles if you want to do that. Use your imagination and see what you can.

4. I used the green floss to stitch the black circles to the orange circles (Fig. 1). It is easiest to do that before you stitch the circles to the hat. Prepare the triangles in the same way. Once they are assembled, pin them in place, then you can stitch them directly to the hat with white floss (Fig. 2).

5. When all the decorations are stitched in place, place the hat right sides together, and stitch along the long edge, about 3/8" from the raw edges (Fig. 3). Turn the hat right side out. Use a cool iron to press the seam open as far as you can reach

6. Use your machine to stitch about 5/8" from the inner circle of the brim. Clip about 1/2" apart, just to where the stitching is.

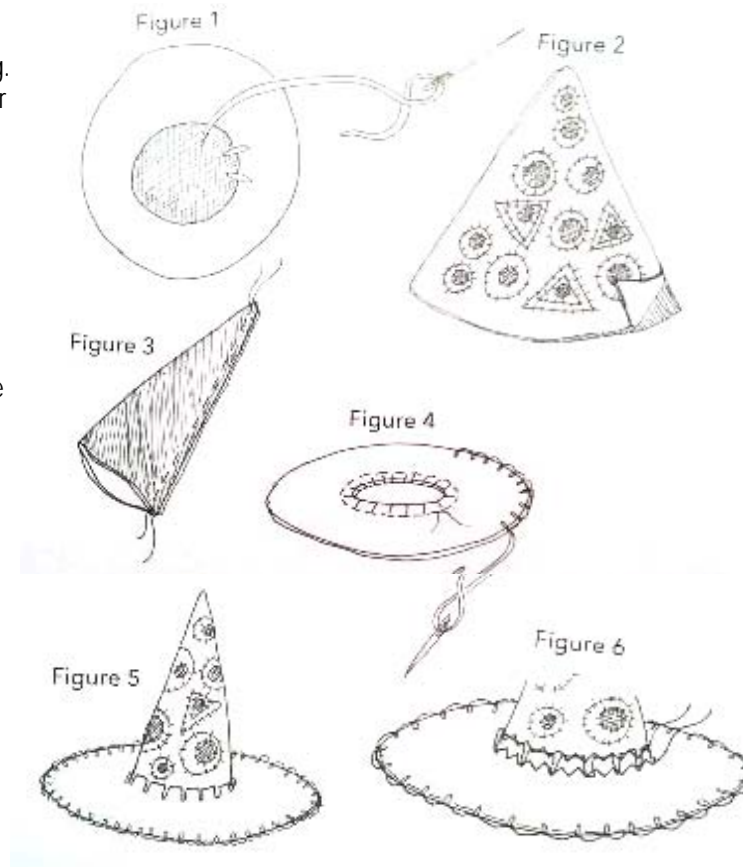
7. Thread the needle with the orange floss, tie a knot in the end, and do a blanket stitch (Diagram A) around the entire outer edge of the brim (Fig. 4).

8. Place the brim over the hat and pull it down until the brim is even with the lower edge of the hat. The clipped edges will show (Fig. 5).

9. Stitch the brim to the hat with your sewing machine, with a zig zag stitch. I recommend making a second row about 1/8" away from the first row (Fig. 6).

10. Tie the flannel strip around the base of the hat, next to the brim, tie it in a bow, and trim the ends diagonally. Your hat is ready for a table centerpiece for "Ghouls Night Out" or for the Halloween season! It is also wearable, for a costume

NOTE: To resize the hat for a smaller witch, shorten it by cutting it about 1-2" shorter along the curved edge. You will need to make the opening in the brim about 1-2" smaller to accommodate the smaller opening of the hat.



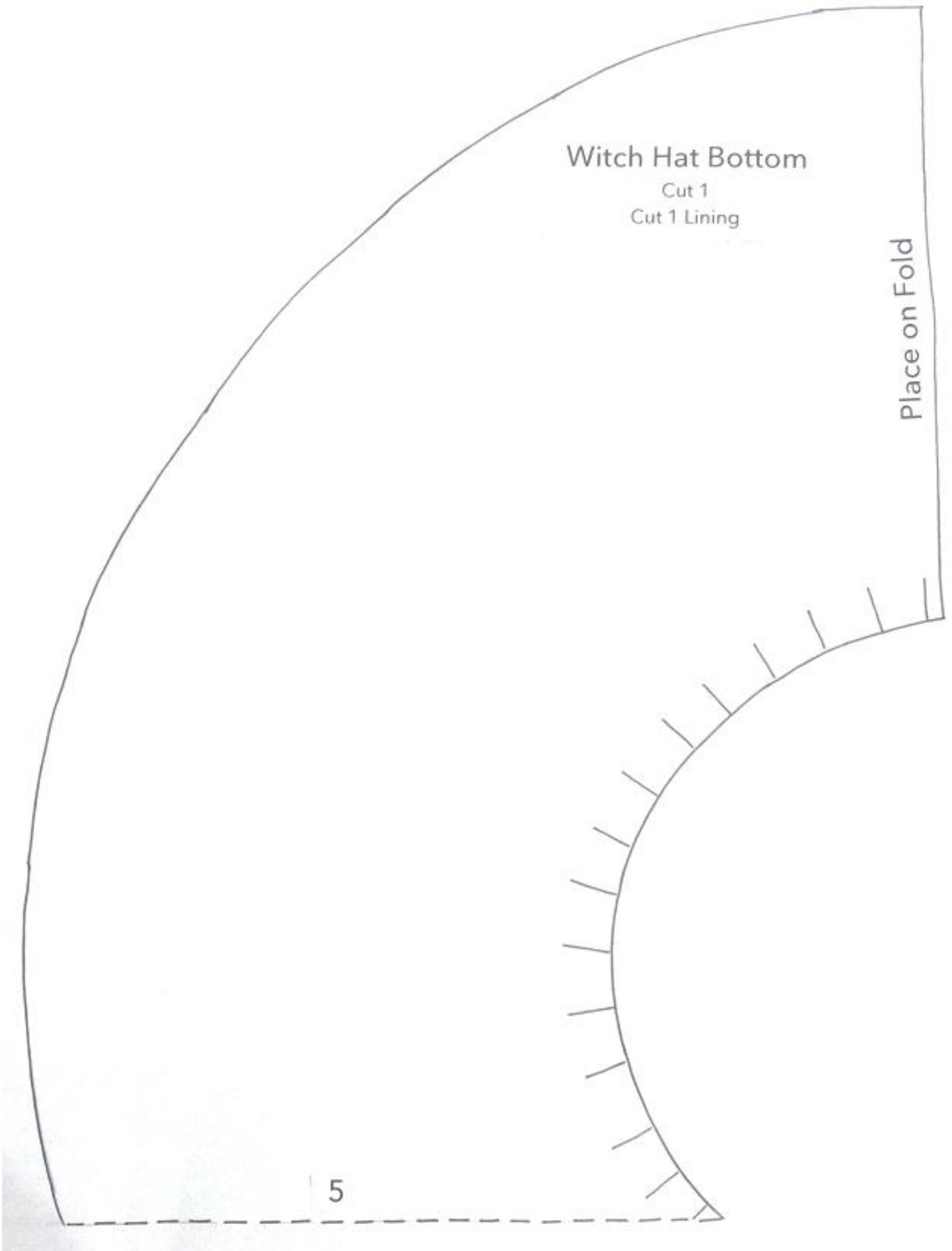


Diagram A
Buttonhole Stitch

