



amy
butler

sewing patterns

zen garden quilt





Free Spirit



Zen Garden

Featuring Splendor by Amy Butler

Curved piecing is the secret to this beautiful quilt showcasing Amy Butler's Splendor fabrics. It looks intricate, but templates make it a splendid experience.

Collection:	Splendor by Amy Butler
Technique:	Piecing and Template Piecing
Skill Level:	Intermediate
Crafting Time:	Longer term*
Finished Size:	Finished Size: 80" x 100" (203.20cm x 254.00cm)
	Block Size: 20" x 20" (50.80cm x 50.80cm)

*Crafting time based on Intermediate skill level



Project designed by Stacey Day

Fabric Requirements

DESIGN	COLOR	ARTICLE CODE	YARDAGE
(A) Double Fault Floral	Moon Glow	PWAB164.MOONG	4½ yards (4.11m)
(B) Forest Friends	Midnight	PWAB165.MIDNI	1¼ yards (1.14m)
(C) Forest Friends	River	PWAB165.RIVER	3¼ yards (2.97m)
(D) Positive Direction	Cherry	PWAB169.CHERRY	¾ yard (34.29cm)
(E) Mighty Corners	Aquamarine	PWAB170.AQUAM	2½ yards (1.94m)
(F) Mighty Corners	Sage	PWAB170.SAGEX	¾ yard (68.58cm)
(G) Zen Garden	Sage	PWAB172.SAGEX	1 yard (.91m)

Backing (Purchased Separately)

44" (111.76cm)			
Double Fault Floral	Moon Glow	PWAB164.MOONG	7½ yards (6.70m)
OR			
108" (274.32cm)			2½ yards (2.28m)

Additional Requirements

- Coats Dual Duty XP® All-purpose thread to match fabrics
- 88"x 108" (223.52cm x 274.32) batting
- (1) copy each of Template 1 through 4, printed at actual size
- Template plastic
- Sewing machine
- Rotary cutter/mat/ruler
- Basic sewing and pressing supplies



(A)



(B)



(C)



(D)



(E)



(F)



(G)



Backing
44"
(111.76cm)

Cutting Instructions

WOF = Width of Fabric, HST= Half-square Triangle

Preparation

- Trace each template onto plastic and cut out. Transfer the grain line marking.
- Before cutting, trace the total number of templates needed onto the fabric, nesting for best use of fabric. The template grain lines should go along the crosswise fabric grain (WOF). Note that some fabrics are directional prints so pieces should be cut in one direction only.

Fabric A, cut:
(80) Template 1

Fabric B, cut:
(8) 4¼" x WOF (10.79cm x WOF);
sub-cut (80) 4¼" (10.79cm) squares, cut in half once diagonally to yield (160) HST

Fabric C, cut:
(80) Template 2

Fabric D, cut:
(20) Template 4

Fabric E, cut:
(80) Template 3

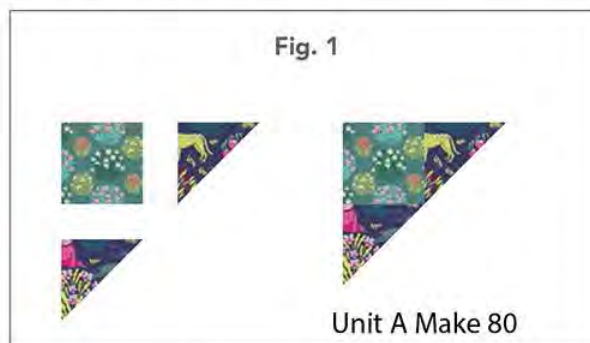
Fabric F, cut:
(10) 2¼" x WOF (5.72cm x WOF), for binding

Fabric G, cut:
(8) 3⅞" x WOF (9.84cm x WOF); sub-cut
(80) 3⅞" (9.84cm) squares

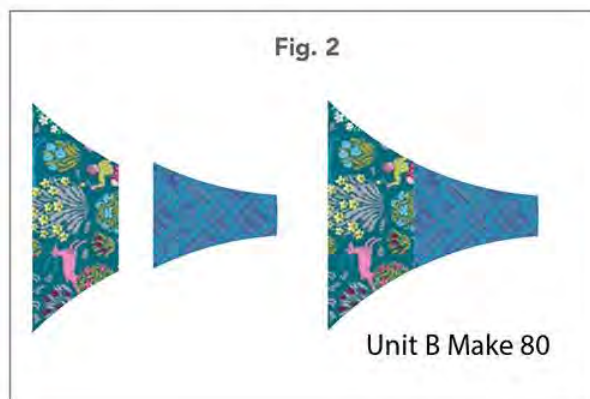
Sewing

Note: All seam allowances are ¼" (6cm) unless otherwise noted. Sew pieces right sides together.

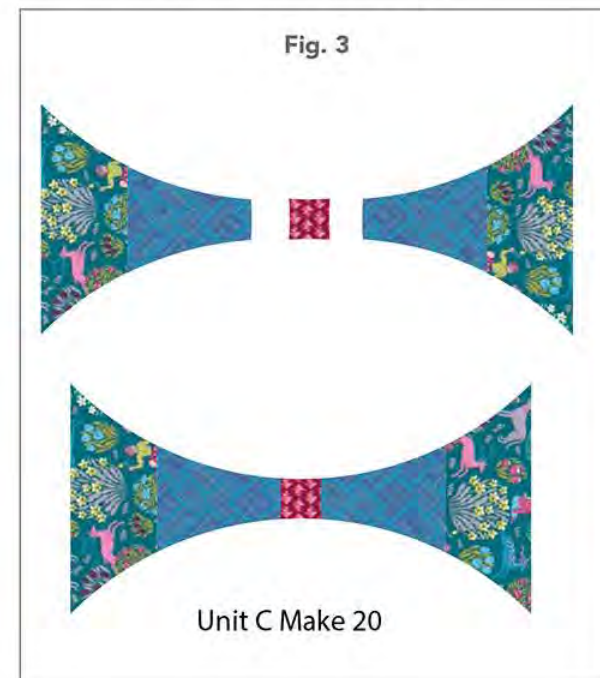
1. Sew (1) **Fabric B** HST to each side of (1) **Fabric G** 3⅞" (9.84cm) square as shown. Make a total of (80) Unit A (**Fig. 1**).



2. Sew (1) **Fabric C** Template 2 piece to (1) **Fabric E** Template 3 piece as shown. Make a total of (80) Unit B (**Fig. 2**).



3. Sew (1) Unit B to each side of a **Fabric D** Template 4 piece. Make a total of (20) Unit C (**Fig. 3**).



4. Sew together (1) Unit A, (1) Unit B piece, and (2) **Fabric A** Template 1 pieces. Make at total of (40) Unit D (**Fig. 4**).
5. Sew (2) Unit A, (1) Unit C, and (2) Unit D pieces together as shown to make a total of (20) blocks, each measuring 20½" (52.07cm) square (**Fig. 5**). For easier sewing, mark and match the center points of the units before attaching adjacent pieces.

Quilt Top Assembly

6. Following the **Quilt Layout** diagram, lay out the blocks in (5) rows of (4) blocks each. Sew the blocks together in each row, pressing seams in alternate directions for adjacent rows. Sew the rows together, matching adjacent seams, to complete the quilt top.

Finishing

7. Layer the backing (wrong side up), batting, and quilt top (right side up). Baste the layers together and quilt as desired. Trim the batting and backing even with the quilt top.
8. Sew the (10) **Fabric F** binding strips end to end using diagonal seams to make one continuous piece. Fold in half wrong sides together and press the length.
9. Sew the binding to the quilt top, mitering the corners. Turn the binding to the back of the quilt and hand-stitch in place.



Fig. 4



Unit D Make 40

Fig. 5

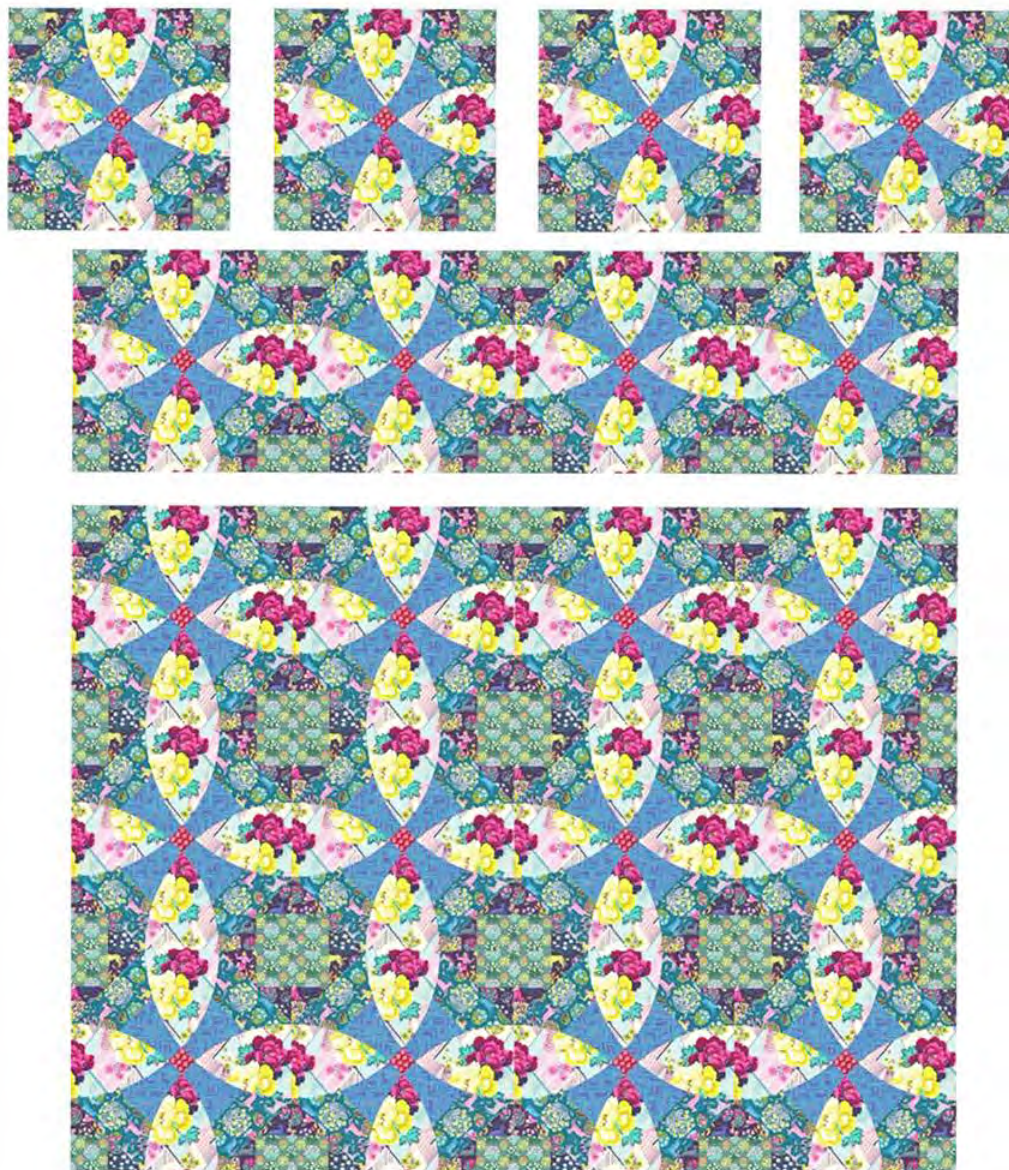


Block Make 20



Make it COATS

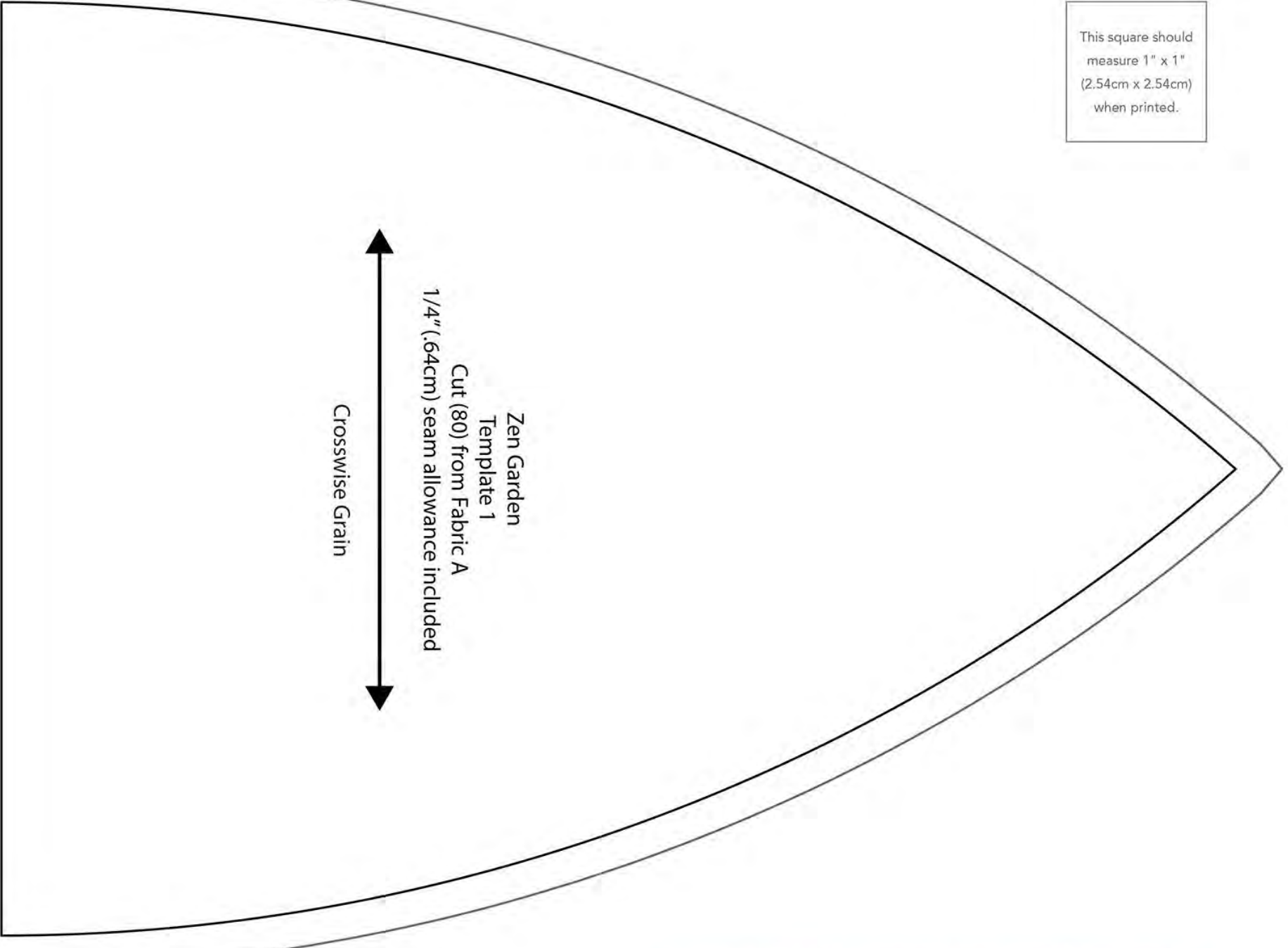
Quilt Layout



This square should
measure 1" x 1"
(2.54cm x 2.54cm)
when printed.

Zen Garden
Template 1
Cut (80) from Fabric A
1/4" (.64cm) seam allowance included

Crosswise Grain

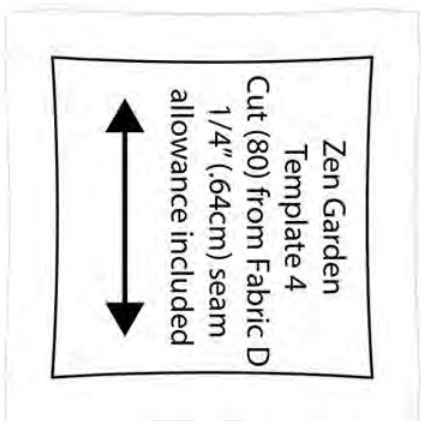
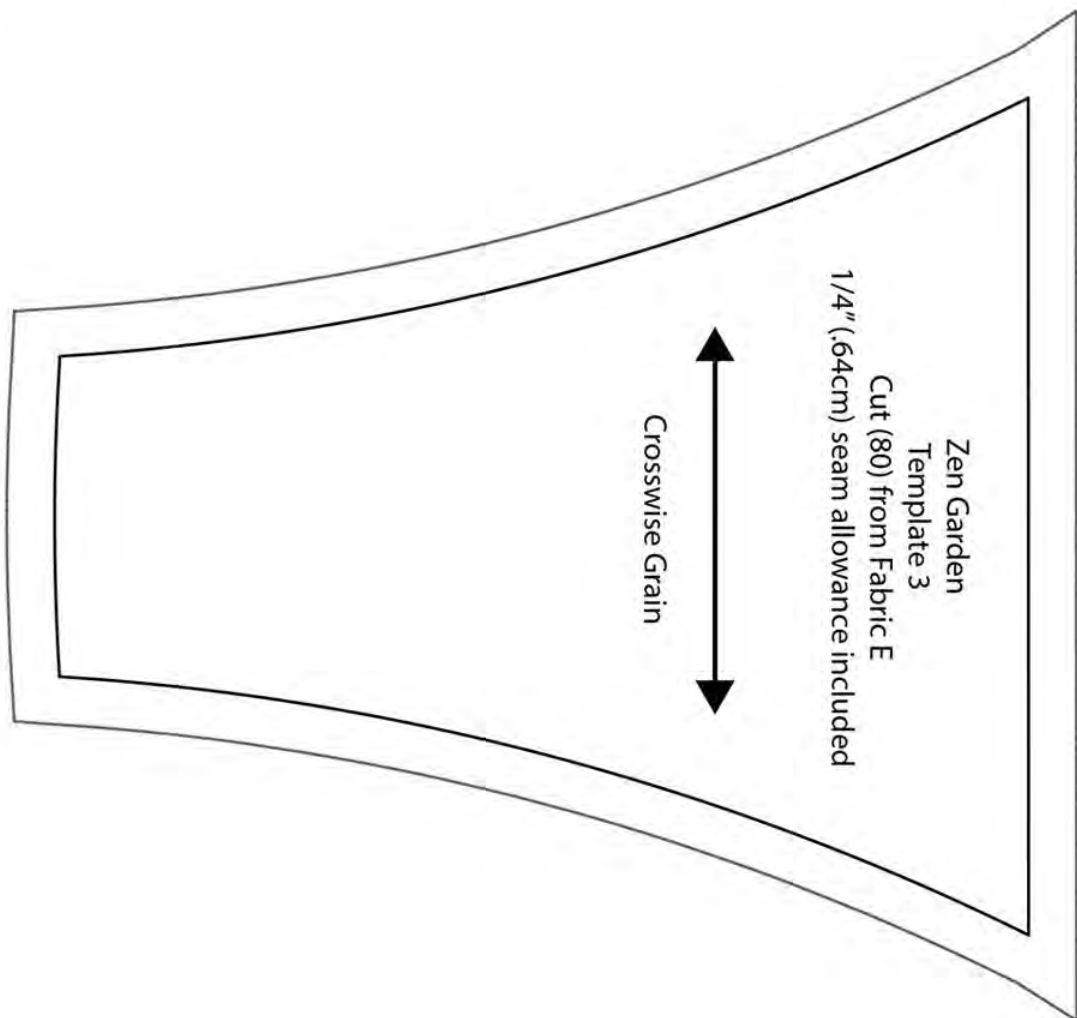


*** Measure templates before cutting to confirm printing at 100%***

This square should
measure 1" x 1"
(2.54cm x 2.54cm)
when printed.

Zen Garden
Template 2
Cut (80) from Fabric C
1/4" (.64cm) seam allowance included
Crosswise Grain

This square should
measure 1" x 1"
(2.54cm x 2.54cm)
when printed.



*** Measure templates before cutting to confirm printing at 100%***